

INDUSTRIAL BINS AND PALLETS



DESIGNED FOR THE DEMANDS OF INDUSTRIAL MATERIAL HANDLING.



DECADE PRODUCTS®

BINS AND PALLETS BUILT FOR YOUR BUSINESS

BUILT

FOR YOUR BUSINESS.

Decade Products offers long-lasting bins and pallets, intelligently designed for the way manufacturers organize, store, stage, move, and ship their products.

We understand the material handling needs of chemical, pharmaceutical, plastics, textiles, automotive, and other manufacturers, and we engineer products that help them work faster, safer, more ergonomically, and with greater efficiency.

Our business is built on recognizing and anticipating our customers' needs, trends, and business cycles—and designing our products and services around them. That's why we'll custom design just about any feature of our bin offering. It's why we maintain a robust inventory for fast shipping. And it's why we don't require minimum orders when you just need a bin or two.



So talk with us about your materials handling challenges—big or small. We can help you save money, work smarter, and ensure your products are carefully maintained in storage and in transport—no matter the application.



BUILT FOR INDUSTRIAL USE

Bins and pallets are engineered to endure the most challenging environments. Impact-resistant. Temperature-resistant. UV-resistant. Weather-resistant. Rot-resistant. Mold- and mildew-resistant. Corrosion-resistant.



MULTIPLE CONFIGURATIONS

Abundant size options, solid or vented sides, flexible runner configurations, breakdown designs, and great color choices are part of our standard offering. Plus, you can customize sizes and add casters, side access, doors, lids, drains, RFID tracking, and a whole lot more.



COMPACT & STACKABLE

We've built efficiency into our designs. All bins are stackable and either nest or break down to store inside each other when not in use, saving as much as 75% space in transport or storage. Pallets nest, stack, or rack to save trailer or storage space when empty.



DESIGNED TO LAST & PROTECT

Smooth surfaces and rounded corners safeguard your contents from damage in storage and transport. Bins and pallets are maintenance-free and stand up to repeated power washing or steam cleaning.



LARGE INVENTORY & FAST SHIPPING

We know that time is money and we work hard to keep inventory on hand and ready to ship. Just need a few bins? No worries. We never require minimum quantities for standard products.



REUSABLE & RECYCLABLE

Bins and pallets are engineered from high-density polyethylene (HDPE), which is stable, durable, and can be used over and over again for many years. When their useful lives are over, they're 100% recyclable for zero waste to landfill.

MACX[®] BINS

RUGGED, ONE-PIECE BINS

with abundant sizes, options,
and customization possibilities

These high-impact-resistant bins are built for the most rigorous demands, and are available in solid or vented side walls and with almost unlimited options to fit a wide range of material handling needs and systems. Choose from standard size, large capacity (MACX), large-capacity square bins (MACX48), as well half-height bins (perfect for small parts, low-volume, or low-clearance applications).

FEATURES

- 3 full-bin sizes/1 half-bin size
- Maintenance-free HDPE plastic
- Solid or vented walls
- Runner options to meet any material handling system (*see chart*)
- 4-way and 2-way lift entry options
- MACX bins stack interchangeably
- Stack up to 10 high
- Nest when empty
- Corrosion- and UV-resistant
- Heat- and cold-resistant from -40°F to 140°F
- Meet USDA/HACCP standards for food product handling
- Reusable and 100% recyclable
- No minimum order for standard products/options
- Solid bins available in seven colors (or custom colors with minimum order)
- Vented bins stocked in gray only




OPTIONS

- Lids
- Drains
- Casters
- Air curtains
- Access/doors*
- Labels
- RFID tags*
- Cardholders*
- Embossing*
- Custom colors*

See page 8 to learn more

** Minimum quantity required*



BIN	DIMENSIONS	WEIGHT /VOLUME CAPACITY	TRUCKLOAD QUANTITY	RUNNERS
MACXAce  <p><i>Shown: Gray, solid with Integrated 3-runner</i></p>	Ext. 48" L x 40" W x 31" H Int. 45" L x 36.5" W x 25.75" H Stack Up to 10*-high <i>and stacks with the MACX</i>	Tare 74 lbs Wt. 1,500 lbs Vol. 20.4 bushels 190 US gallons 25.4 ft ³ Stack Load 14,000 lbs	112 per load (48 ft truck) 120 per load (53 ft truck) 150 stack/pack (53 ft truck)	Integrated 3-runner
MACX  <p><i>Shown: Gray, solid with long-side runner</i></p>	Ext. 48" L x 40" W x 31" H Int. 45" L x 36.75" W x 25.75" H Stack Up to 10*-high	Tare 92 lbs Wt. 1,500 lbs Vol. 20 bushels 190 US gallons 25.4 ft ³ Stack Load 14,000 lbs	150 per load	Replaceable Short side Long side
MACX48  <p><i>Shown: Gray, solid with 2 -runner</i></p>	Ext. 48" L x 48" W x 28.5" H Int. 44.73" L x 44.73" W x 23.86" H Stack Up to 10*-high	Tare 93 lbs Wt. 1,500 lbs Vol. 20 bushels 217 US gallons 29 ft ³ Stack Load 14,000 lbs	94 per load	Replaceable 2-runner Optional air curtain
MACX Half  <p><i>Shown: Gray, solid with short-side runner</i></p>	Ext. 48" L x 40" W x 18" H Int. 45" L x 36.75" W x 12.75" H Stack Up to 10*-high	Tare 64lbs Wt. 800 lbs Vol. 10 bushels 96 US gallons 12.5 ft ³ Stack Load 800 lbs	150 per load	Replaceable Short side Long side 2-runner

NEED A DIFFERENT SIZE OR SETUP?

No problem. We can custom design for almost any size, configuration, color, and more.

Minimum orders apply. Get in touch to talk about your needs.



KITBIN®

KNOCK-DOWN DESIGN saves space and money, and reduces downtime



SAVE SPACE! 5 containers break down to fit in the footprint of 1.



This patented design allows walls to be completely detached from the pallet base. When disassembled, four bins fit inside one KitBin and pallet bases nest on top, so five bins fit in the footprint of one. You save up to 75% in storage or transport space. Because bin walls are removable and interchangeable, they can be individually replaced if needed, reducing downtime, replacement, and inventory costs. Bins assemble easily by one person in less than a minute.

FEATURES

- 2 sizes: standard and extra tall (XT)
- Maintenance-free HDPE plastic
- Solid or vented walls
- 4-way lift entry
- Stack up to 5 high (3 high for XT)
- Break down to save transport space and costs
- Replaceable, interchangeable walls
- Corrosion- and UV-resistant
- Heat- and cold-resistant (0° to 140° F)
- Meet USDA/HACCP standards for food product handling
- Reusable and 100% recyclable
- No minimum order for standard products/options
- Available in gray only (or in custom colors with minimum order)

OPTIONS

- Lids
- Casters
- Labels
- RFID tags
- Available in gray only

BIN	DIMENSIONS	WEIGHT /VOLUME CAPACITY	TRUCKLOAD QUANTITY	RUNNERS
KITBIN 	Ext. 47.24" L x 39.37" W x 28.14" H	Tare 84 lbs	215 per 40' HC container	Long side
	Int. 43.93" L x 36" W x 22.24" H	Wt. 1,320 lbs	315 per 53' van	Integrated 2-runner
	Stack Up to 6*-high	Vol. 18 bushels 163 US gallons 21 ft ³		
		Stack Load 6,600 lbs		
<p><small>* Bins must be placed on firm, level surface and must be loaded with an evenly distributed weight. Dimensions may vary +/- 1/2 inch and tare weight may vary +/- 2 lbs. Decade Products reserves the right to change the details of this page at any time.</small></p>				
KITBIN XT 	Ext. 47.24" L x 39.37" W x 50.4" H	Tare 123 lbs	149 per 40' HC container	Long side
	Int. 44" L x 36" W x 44.5" H	Wt. 2,200 lbs	210 per 53' van	Integrated 2-runner
	Stack Up to 6*-high	Vol. 30 bushels 280 US gallons 37 ft ³		
		Stack Load 3,960 lbs		

Shown: Gray, solid-wall with long-side 3-runner

Shown: Gray, solid-wall with long-side 3-runner

DOLAV® BINS

ECONOMICAL, ONE-PIECE BIN with integrated runner design

Dolav bins are one-piece, fixed-wall bins with molded-in integrated runners, available in solid wall, vented wall, or vented base. Engineered from impact-resistant, HDPE, structural foam, these bins are durable, but lightweight, easy to clean, and designed for use in light and heavy industrial, food processing, and pharmaceutical environments.

FEATURES

- 3 sizes
- One-piece, HDPE plastic
- Solid or vented walls or base
- Integrated runner design
- 4-way lift entry
- Stack up to 10 high
- Corrosion- and UV-resistant

- Heat- and cold-resistant (0° to 140° F)
- USDA-approved food safe
- Reusable and 100% recyclable
- No minimum order for standard products
- Available in various colors

OPTIONS

- Lids
- Drains
- Casters
- Labels
- RFID tags
- Cardholders

BIN	DIMENSIONS	WEIGHT /VOLUME CAPACITY	TRUCKLOAD QUANTITY	RUNNERS
DOLAV 800  <i>Shown: Gray, solid wall with long-side 2-runner</i>	Ext. 47.24" L x 31.5" W x 29" H Int. 44" L x 28.35" W x 23.62" H Stack Up to 10*-high	Tare 71 lbs Wt. 1,543 lbs Vol. 13 bushels 132 US gallons 17 ft ³ Stack Load 8,818 lbs	90 per 40' HC container	Molded non-removable Integrally injected 4-way entry
DOLAV 1000-ACE  <i>Shown: Blue, solid wall with long-side 2-runner</i>	Ext. 47.24" L x 39.37" W x 29" H Int. 44.41" L x 36.53" W x 23" H Stack Up to 10*-high	Tare 84 lbs Wt. 1,543 lbs Vol. 17 bushels 158 US gallons 21 ft ³ Stack Load 8,818 lbs	104 per 40' HC container	Molded non-removable Integrally injected 4-way entry
DOLAV 1120  <i>Shown: Blue, solid wall with integrated runners</i>	Ext. 44" L x 44" W x 31.5" H Int. 40.7" L x 40.7" W x 25.6" H Stack Up to 10*-high	Tare 88 lbs Wt. 1,543 lbs Vol. 19 bushels 184 US gallons 24.5 ft ³ Stack Load 8,818 lbs	64 per 40' HC container	Molded non-removable Integrally injected 2-way entry
DFC FOLDING CONTAINER  <i>Shown: Gray, solid wall with 3 long-side integrated runners</i>	Ext. 47.24" L x 39.37" W x 29.13" H Int. 44" L x 36.22" W x 22.75" H Folded Ht. 14.5" H (2:1) Stack Up to 5*-high	Tare 89 lbs Wt. 1,700 lbs Vol. 17 bushels 158 US gallons 21 ft ³ Stack Load 8,500 lbs	154 per 40' HC container 210 per 53' van	Molded non-removable Integrally injected 4-way entry

* Bins must be placed on firm, level surface and must be loaded with an evenly distributed weight.

Dimensions may vary +/- 1/2 inch and tare weight may vary +/- 2 lbs. Decade Products reserves the right to change the details of this page at any time.

OPTIONS

Wide-ranging options let you design bins to fit for your material handling needs exactly.

COLORS

Choose from stock colors below or request a custom color for inventory coding or to match your brand (minimum orders apply). Vented bins are only stocked in gray.



RED



YELLOW



GREEN



BLUE



BLACK



WHITE



GRAY



PINK

LIDS

Keep contents clean, contained, and protected from the environment with HDPE lids available in three closure styles.



LID



T-LATCH



HASP CLOSURES



HINGE-AND-HASP CLOSURES

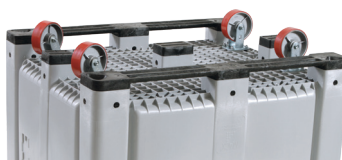
CASTERS

Casters improve efficiency, ergonomics, and workflow. Choose from polyurethane-on-iron or stainless steel. Both are available all-swivel for free movement, rigid casters for unidirectional movement, or a combination of both.

Casters may be mounted through the runner (nonstackable) or through the bottom (stackable) in light- or heavy-load designs.



RUNNER MOUNT (nonstackable)



THRU-BOTTOM MOUNT
Lighter Loads (stackable)



STACKABLE CASTERS Heavy Loads

ACCESS/DOORS

Get ergonomic access to bin contents three ways. Cutout walls, removable walls, or hinged drop doors make it easy to add to, access, or empty your bins.



HINGED DROP DOOR



REMOVABLE WALL



CUTOUT WALL

RUNNERS

MACX runners are replaceable and are available on the 40" or 48" side. MACX fit a wide range of material handling systems. MACX bins are all 4-way entry.



3-RUNNER SHORT SIDE



2-RUNNER LONG SIDE

DRAINS

Two drain styles let you remove liquid safely without siphoning, tipping, or pouring. Drainplug designs have exterior threading for attachment to a hose or pump system. Bulkhead designs are flush mount with internal threads.



DRAINPLUG



BULKHEAD

LABELS, CARD HOLDERS & RFID TAGS

Identify contents with adhesive labels, cardholders (available in adhesive mount or welded mount), or RFID tags that work with automated inventory management systems. Minimum orders apply to cardholders and RFID tags.



LABEL



CARDHOLDER (3" x 7")



CARDHOLDER (9.8" x 5.6")
for MACX48 only



RFID TAG

EMBOSSING

Permanently emboss your name, logo, text, or graphics on the side of your bin. Minimum orders apply.



EMBOSS

DON'T SEE EXACTLY WHAT YOU NEED?

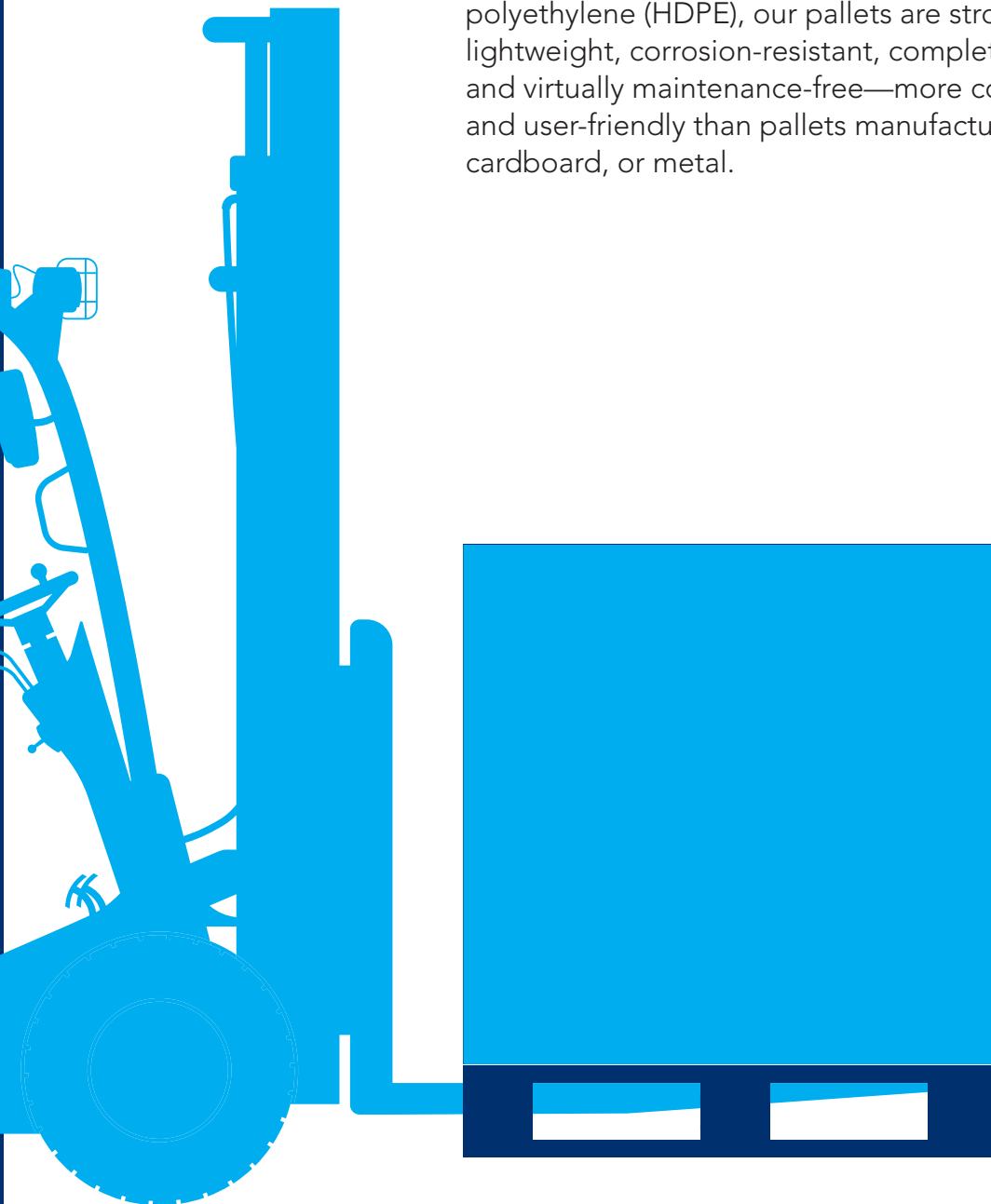
We custom design bins for any just about any size or application. Give us a call and we'll put you in touch with a dealer near you.



PALLETS



From heavy-duty pallets for industrial use, to FDA-approved pallets for food applications, to “one-way” pallets for export, our broad line of pallets serve the needs of industrial, agricultural, and food processing industries worldwide. Engineered of high-density polyethylene (HDPE), our pallets are strong yet lightweight, corrosion-resistant, completely reusable, and virtually maintenance-free—more cost-effective and user-friendly than pallets manufactured from wood, cardboard, or metal.



RACX[®] PALLETS

**STRONG, RACKABLE, PICTURE FRAME
BOTTOM** for racking applications



Rackable pallets are designed for industrial use.

This durable yet lightweight, one-piece pallet offers both superior performance and economy. The picture-frame bottom with runners on all four sides, allows space-saving racking storage above the floor. When loaded pallets are stacked, the bottom pallet can handle the full static load. Ideal for use in warehouse racking systems, as well as stack loading, closed loop transport, floor storage, and automated material handling applications.

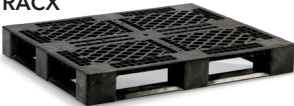
FEATURES

- One size
- Rackable
- 4-way lift entry
- Maintenance-free HDPE plastic
- 100% recyclable
- Available in black only

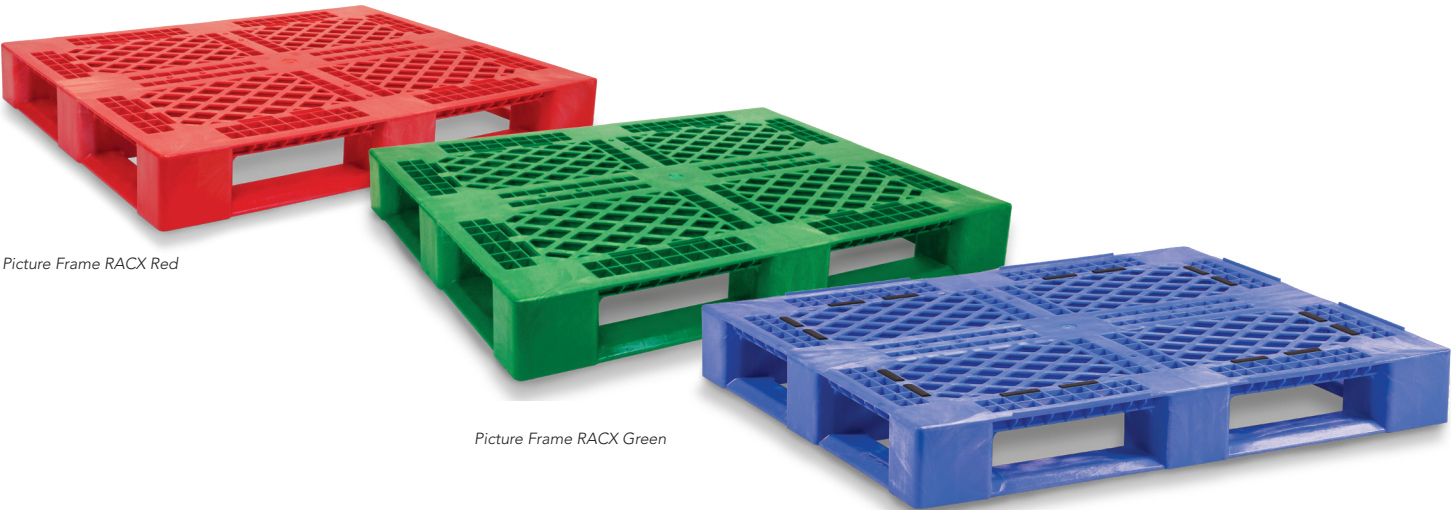
OPTIONS

- Rubber grommets
- Lip Edge
- Black, green, red, or blue available in 100% virgin material
- Custom colors available with minimum quantity

PALLET	DIMENSIONS	WEIGHT	TRUCKLOAD	LOAD
RACX	48" L x 40" W x 6.1" H	Wt. 35 lbs	522 per 53' van	Dynamic 5,000 lbs Static 25,000 lbs Racking 2,200 lbs



Picture Frame RACX

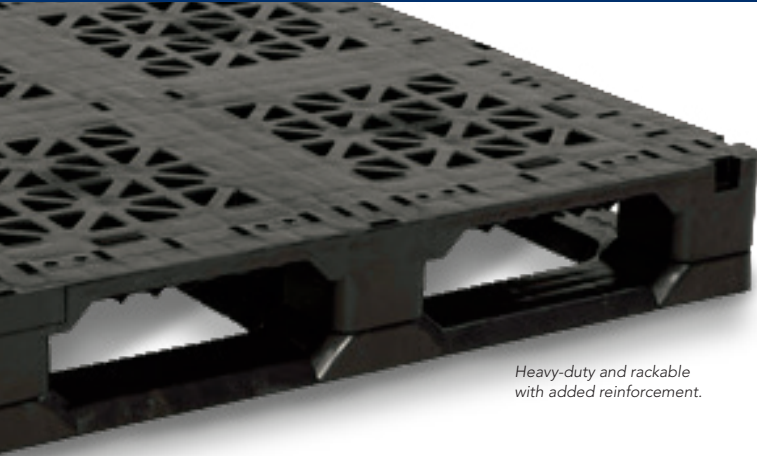


Picture Frame RACX Red

Picture Frame RACX Green

Picture Frame RACX Blue with Lip & Grommets

HEAVY-DUTY (HD) PALLETS



Heavy-duty and rackable
with added reinforcement.

OUR HEAVIEST-DUTY RACKABLE, STACKABLE PALLET with broad size ranges and added reinforcement options

Our Heavy-Duty pallets handle extreme loads and offer reinforcement rod options that further increase racking load capability. These stackable pallets let you safely double stack multiple pallets, fully loaded, during shipping. They're widely used in stack loading, closed-loop transport, floor storage, and automated material handling equipment in a wide range of applications, including material handling, warehousing, distribution centers, and returnable shipping applications.

FEATURES

- Rackable
- Stackable
- 4-way lift entry
- Rubber grommets
- Maintenance-free HDPE plastic
- 100% recyclable
- Available in black only

OPTIONS

- Reinforcement rods

PALLET	DIMENSIONS	WEIGHT	TRUCKLOAD	LOAD	
HEAVY-DUTY 	48"L x 40"W x 5.9"H	Wt. 53 lbs	540 per 53' van	Dynamic	5,000 lbs
				Static	25,000 lbs
				Racking	1,500 lbs
HD 48 x 40 Unreinforced or with 3-rod or 5-rod reinforcement					
	40"L x 32"W x 5.5"H	Wt. 45 lbs	810 per 53' van	Dynamic	5,000 lbs
				Static	25,000 lbs
				Racking	2,500 lbs
HD 40 x 32, 3-runner With 3-rod reinforcement standard					
	37"L x 37"W x 5.5"H	Wt. 50 lbs	576 per 53' van	Dynamic	5,000 lbs
				Static	25,000 lbs
				Racking	2,500 lbs
HD 37 x 37 Unreinforced or with 4-rod reinforcement					
	110cmL x 120cmW x 14.7cmH 43.3"L x 47.2"W x 5.8"H	Wt. 67 lbs	540 per 53' van	Dynamic	5,000 lbs
				Static	30,000 lbs
				Racking	2,800 lbs
HD 110 x 120 cm Unreinforced or with 3-rod reinforcement					
	48"L x 48"W x 5.9"H	Wt. 55 lbs	442 per 53' van	Dynamic	5,000 lbs
				Static	20,000 lbs
				Racking	1,600 lbs
HD 48 x 48 With 5-rod reinforcement standard					

EXPORT PALLET

NESTABLE PALLETS designed for easy and economical export






These “one-way” plastic pallets are designed for export and meet EU, Canadian, and Asian Customs requirements. The fully nestable design requires less storage space and reduces shipping costs when empty. They’re easy to clean and, unlike wood pallets, don’t require fumigation and won’t increase in weight, harbor pests, or sustain water damage—eliminating the risk and expense of refused entry or lengthy Customs delays. A 4-way entry provides easy access during handling.

- FEATURES**
- One size
 - Nestable
 - 4-way lift entry
 - Maintenance-free HDPE plastic
 - 100% recyclable
 - Available in black only



Pallets nest to save space and shipping costs when empty.

PALLET	DIMENSIONS	WEIGHT	TRUCKLOAD	LOAD	
EXPORT 	48" L x 40" W x 5" H	Wt. 12.2 lbs	2,100 per load	Dynamic	2,250 lbs
				Static	4,000 lbs
	48" L x 40" W x 5.5" H	Wt. 17 lbs	2,100 per load	Dynamic	2,000 lbs
				Static	5,000 lbs
STACKABLE 	48" L x 40" W x 5.5" H	Wt. 17.2 lbs	540 assembled 1,600 unassembled	Dynamic	2,800 lbs
				Static	9,000 lbs

SMOOTH DECK PALLETS

SOLID-TOP PALLETS for easy cleaning


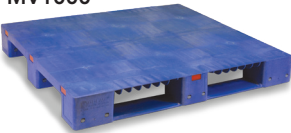

These pallets feature a solid, smooth top surface that's easy to clean and designed for extreme temperature- and UV-resistant applications. They're made using USDA-approved material suitable for food-processing applications.

Smooth, solid, easy-to-clean top surface.



FEATURES

- 2 sizes
- 4-way entry
- Heat- and cold-resistant (-40°F to 140°F)
- USDA/FDA-approved material
- Maintenance-free HDPE plastic
- 100% recyclable

PALLET	DIMENSIONS	WEIGHT	TRUCKLOAD	LOAD
KITBIN PALLET  <p><i>Also available in blue, green and yellow</i></p>	47.24" L x 39.37" W x 5.9" H	Wt. 43 lbs	492 per 40' HC container 540 per 53' van	Dynamic 4,000 lbs Static 13,200 lbs Racking 1,320 lbs
MV1000  <p>3-Runner, Virgin 3-Rod</p>	47.24" L x 39.37" W x 5.9" H	Wt. 56 lbs	505 per 40' HC container	Dynamic 4,850 lbs Static 17,637 lbs Racking 3,300 lbs
 <p>3-Runner, recycled no rod</p>	47.24" L x 39.37" W x 5.9" H	Wt. 40.7 lbs	505 per 40' HC container	Dynamic 3,968 lbs Static 13,228 lbs Racking 1,323 lbs

DECADE PRODUCTS.

We bring together
knowledge, innovation,
and technology to help
makers and growers
store and transport their
products better.

