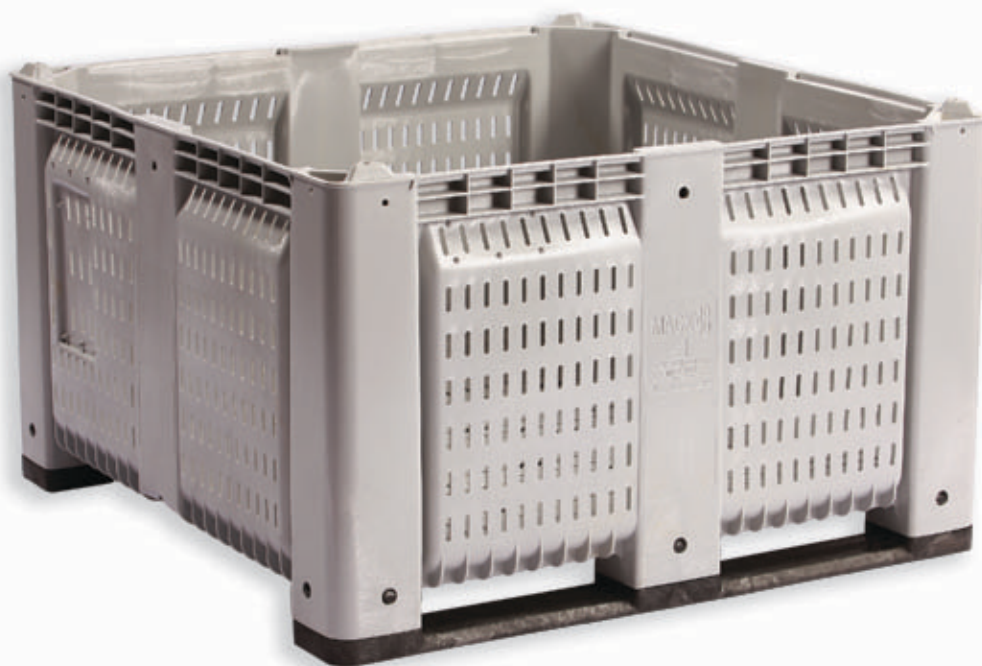


New - From **DECADE** PRODUCTS®

48x48 Bulk Harvest Bin

## Introducing our new 48x48 bin The MACX<sup>®</sup>48



**Increased volume streamlines your production and reduces long-term costs of handling produce**

Now you can avoid unnecessary produce transfers from harvesting equipment to trucks, to boxes, to burlap bags, and a myriad of other time-consuming steps. When mounted directly on harvesting equipment, Decade containers can transport produce directly from the field to the processing facility or straight onto the truck to market. Decade bins can be molded with your company logo and are available in the custom color of your choice for easy identification.

Your single source  
for pallet and container solutions



**DECADE** PRODUCTS®



# Engineered with Produce in Mind

## DECADE Fixed-Wall Containers

Decade Fixed-Wall containers are built to meet the most rigorous demands. The heavy-duty construction is tough, yet lightweight, so these containers can be moved by hand when empty and are stackable up to 10 high, even when fully loaded.

Constructed of high-density polyethylene (HDPE) structural foam materials to stand the test of time, Decade reusable containers are strong, yet lightweight. They offer increased life span, superior corrosion resistance, and require virtually no maintenance.

Unlike wood crates that may harbor splinters, pests, pathogens, mold or other undesirable elements, Decade containers meet USDA/HACCP standards for direct food contact.



- **High concentration of sidewall & base vents** provide faster cooling, drying, and processing times than competitive plastic containers.
- **Four-way entry** allows easier handling and maneuverability. Air curtains are available for two-way entry use in air drying applications.
- **Smooth surfaces** allow better pack-out; can be high-pressure washed and sterilized.
- **Rounded inner corners** minimize bruising to help maintain the quality of produce.
- **Consistent, more accurate tare weight** than wood containers that can absorb excess moisture and water.
- **Customizable** with attachable lids, casters,

### Specifications

External Dimensions	48" x 48" x 28"
Internal Dimensions	44.73" x 44.73" x 23.86"
Maximum Load Capacity	1,500 lbs.
Tare Weight	93 lbs.
Maximum Stacking Load	14,000 lbs.
Volume Capacity	217 U.S. Gallons 49,603 (± 4%) cubic inches

## Environmentally friendly, yet cost effective

Today, major industries worldwide are recognizing the growing importance of sustainable development and the requirement to meet the needs of the present without compromising the ability of future generations to meet their own needs. Our long and deep commitment to sustainable development is evidenced by the fact that all Decade products are made of 100% recyclable plastics, and truly represent an environmentally-friendly approach to the fabrication of high strength injection molded products.

Don't forget our full line of pallets, bulk shipping and storage containers for industrial, agricultural and food processing applications. They are engineered to stand the test of time, increase productivity and reduce material handling costs. For more information, please visit our website at [www.decadeproducts.com](http://www.decadeproducts.com).



**DECADE PRODUCTS**  
3710 SYSCO COURT, S.E.  
GRAND RAPIDS, MI 49512-2085  
Phone: 877-999-MACX (6229)  
Fax: 616-254-4259  
E-mail: [info@decadeproducts.com](mailto:info@decadeproducts.com)  
[www.decadeproducts.com](http://www.decadeproducts.com)

All industrial property rights, including patents, designs, copyrights and trade names are the sole and exclusive property of Decade Products. Dimensions may vary +/- 1/2 in. and tare weight may vary +/- 2 lbs. Decade reserves the right to change the details of this catalogue.