



NestaFlex Gravity 226 Conveyor

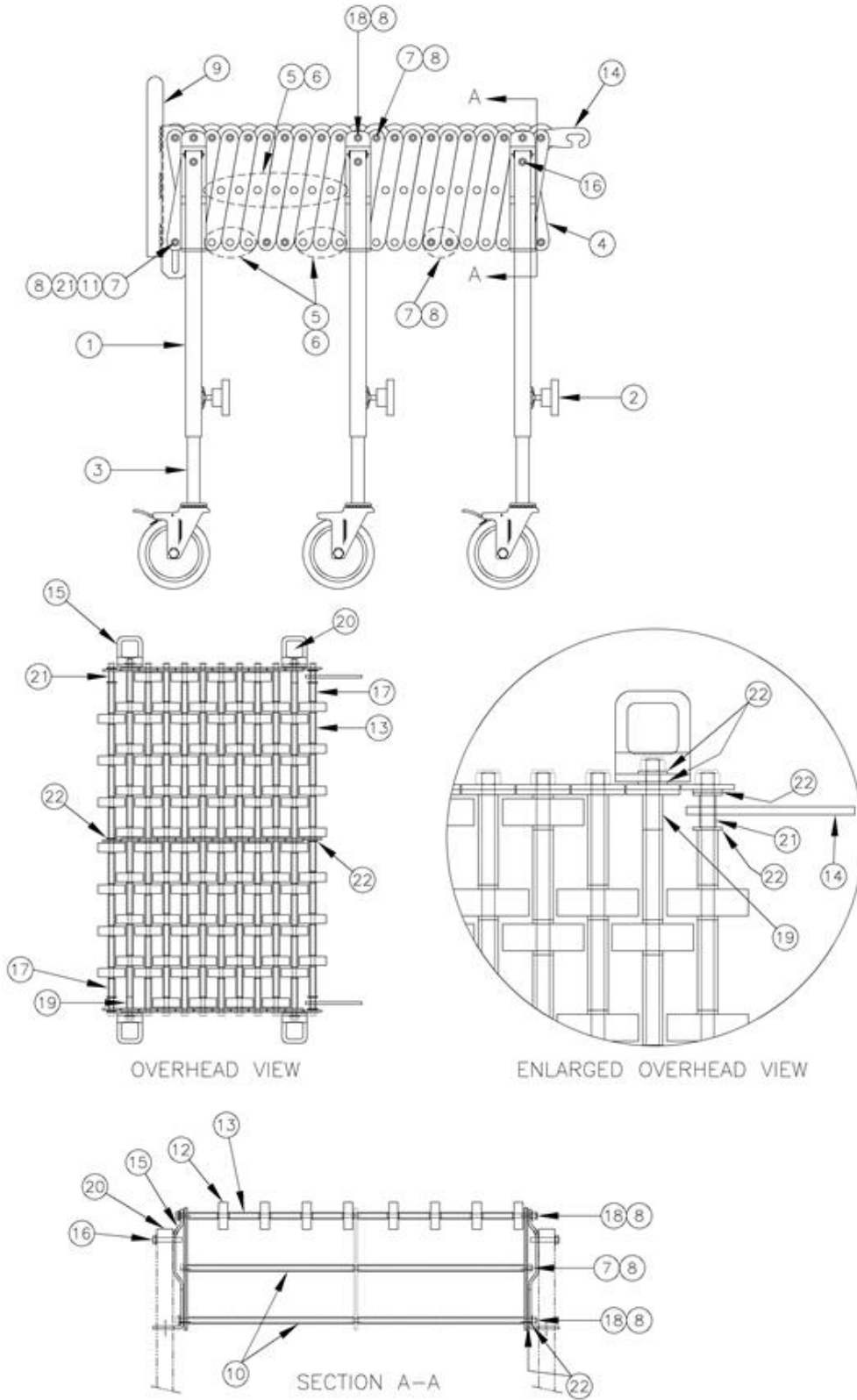
Replacement Parts

FMH Conveyors
410 Horizon Drive, Suite 200
Suwanee, GA 30024

p. 678.745.3720
t. 800.669.1501 x728
f. 678.482.0721

Part Number 004907
Effective September 2015
www.fmhconveyors.com

NESTAFLEX 226 CONVEYOR (24" WIDE FL SHOWN)



FMH Conveyors® Replacement Parts
NestaFlex 226 Conveyors

NESTAFLEX 226 CONVEYOR REPLACEMENT PART NUMBERS

	DESCRIPTION	MODEL			
		14" WIDTH	18" WIDTH	24" WIDTH	
1	H Frame (leg assembly) for conveyor height:	20" to 28"	H FRAME 22614	H FRAME 22618	H FRAME 22624
		25" to 38"	H FRAME 22614	H FRAME 22618	H FRAME 22624
	(standard)	28" to 44"	H FRAME 22614	H FRAME 22618	H FRAME 22624
		36" to 52"	H FRAME 22614	H FRAME 22618	H FRAME 22624
2	Handknob 5/16-24		000027	000027	000027
3	Inner Leg Assembly (with 5" caster with brake) for conveyor height:	20" to 28"	006432 - 002	006432 - 002	006432 - 002
		25" to 38"	006432 - 001	006432 - 001	006432 - 001
	(standard)	28" to 44"	006432	006432	006432
		36" to 52"	006432	006432	006432
	Inner Leg Assembly (with 5" caster without brake) for conveyor height:	20" to 28"	006430 - 002	006430 - 002	006430 - 002
		25" to 38"	006430 - 001	006430 - 001	006430 - 001
	(standard)	28" to 44"	006430	006430	006430
		36" to 52"	006430	006430	006430
4	Side Link - zinc plated		000019	000019	000019
5	Pivot Pin		000020	000020	000020
6	Retaining Ring		000585	000585	000585
	Retaining Ring Hand Tool (not shown) (for assembly of pivot pins/retaining rings)		001903	001903	001903
7	Shaft (Bed):	14-1/4"	003969	N/A	N/A
		18-1/4"	N/A	003967	N/A
		24-3/8"	N/A	N/A	001841
8	Nut Lock 5/16		000022	000023	000023
9	Carton Stop (only)		003920	003128	003129
	Carton Stop conversion kit (includes 9, 10, 21, 22, and assembly drawing)		004361	004362	004363
10	Spacer gray plastic	13-1/2"	004122	N/A	N/A
		8-11/16"	N/A	003197	N/A
		11-11/16"	N/A	N/A	015794
11	Spacer gray plastic (at carton stop only)	11-7/8"	015791	N/A	N/A
		7-13/16"	N/A	015799	N/A
		10-7/8"	N/A	N/A	015789
12	Skate Wheel:	Red Nylon (N)	000012	000012	000012
		Black Polymer (P)	000635	000635	000635
		Steel (S)	000047	000047	000047
13	Spacer gray plastic (between wheels)	1-7/16"	004108	N/A	N/A
		2-1/16"	N/A	003195	N/A
		2-7/64"	N/A	N/A	015793
14	Coupler		015168	015168	015168
15	K-Bracket (at leg)	3" Axle Centers	004453	004453	004453
		4" Axle Centers	004454	004454	004454
	(Standard)	5-1/4" Axle Centers	004456	004456	004456
16	Screw Self Tapping Hex 5/16-18		015084	015084	015084
17	Spacer gray plastic (at ends)	5/8"	015792	N/A	N/A
		1-1/4"	N/A	015798	N/A
		1-9/32"	N/A	N/A	015790
18	Shaft (at leg):	14-7/8"	003970	N/A	N/A
		18-7/8"	N/A	003200	N/A
		25"	N/A	N/A	002181
19	Spacer gray plastic 13/16"		004228	004228	004228
20	Plug black plastic		000283	000283	000283
21	Spacer steel 3/4"		003192	003192	003192
22	Washer flat 5/16" - zinc plated		000024	000024	000024

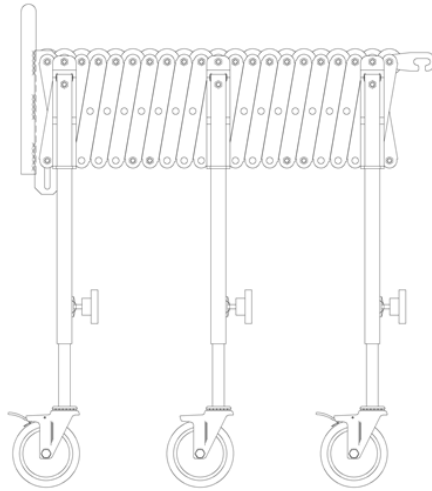
ORDERING INSTRUCTIONS

When ordering NestaFlex replacement parts, review the following information:

1. Width of conveyor
2. Color of skate wheel

When ordering H frames (leg weldments) and/or inner legs with casters, review the additional information:

3. Conveyor height. Height is measured from the top of the skate wheel to the floor at the H frame/inner leg that is to be replaced.



226FL PICTURED ABOVE

WARRANTY STATEMENT

Seller warrants to buyer for a period of two (2) years from date of shipment that the goods at the time of shipment will be free from defects of material and workmanship and will be in accordance with specifications which are made a part of the sales contract by reference thereto. Seller's sole obligation under the foregoing warranties will be limited to either, at seller's option, replacing or repairing defective goods or refunding the purchase price for such goods theretofore paid by buyer and buyer's exclusive remedy for breach of any of such warranties will be enforcement of such obligation of seller. When return or replacement is deemed necessary, by the seller, the cost of transportation, not to exceed the usual commercial method of shipment, will be the responsibility of the seller. These warranties will not extend to goods subjected to misuse, neglect, accident or improper installation or maintenance or which have been altered or repaired by anyone other than seller or its authorized representative. The foregoing warranties are exclusive and in lieu of all other warranties of merchantability, fitness for purpose and of any other type, whether express or implied.

Your NestaFlex system is supported by a group of factory trained customer service representatives. They can be reached via our toll free number **1.800.669.1501** to assist with your replacement parts questions or orders. Our team is eager to help.