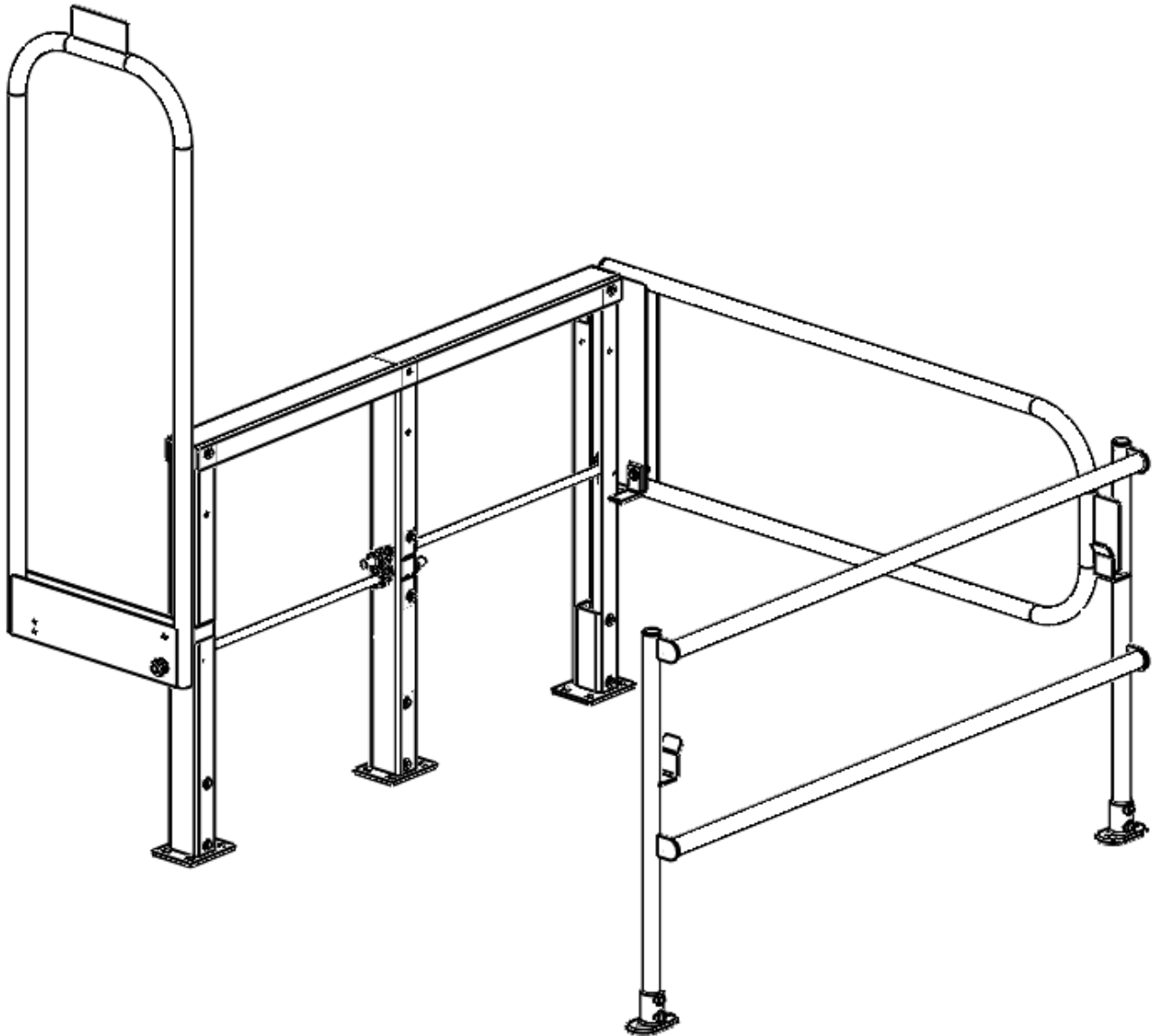


LedgeGuard™

Installation Instructions



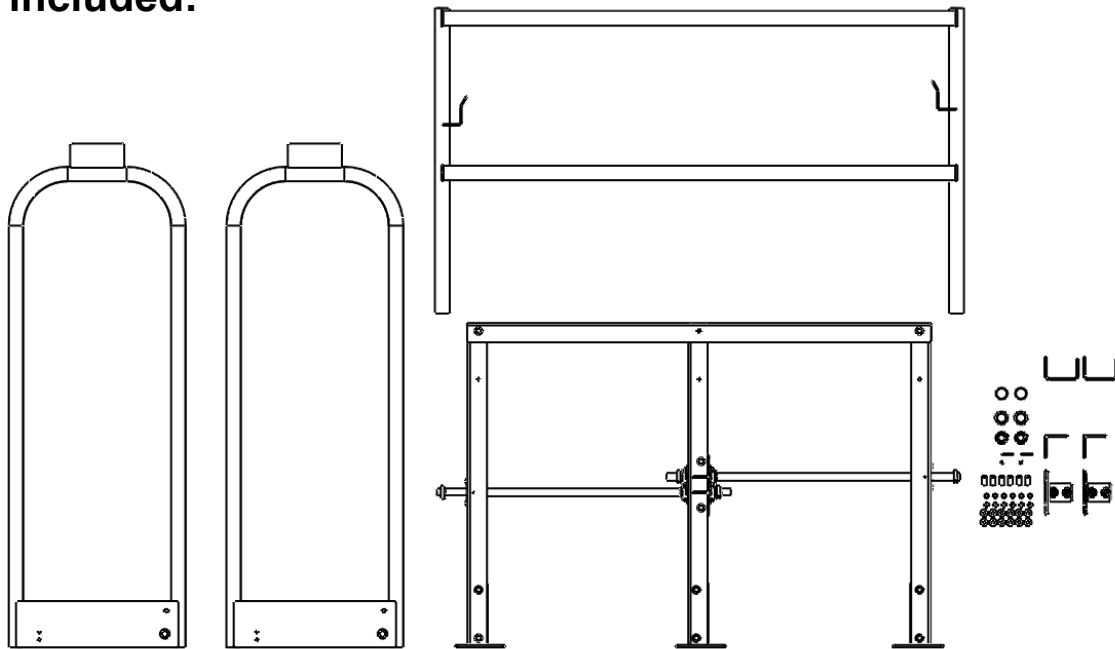
For use at loading and hoisting areas on elevated surfaces.



431-000-000

2601 Niagara Lane · Plymouth, MN 55447 · (763) 557-1982 · (877) 841-0848 · Fax (763) 557-1971

What's included:



Kit includes:

- 2 Gates
- 1 Hardware Kit.

Not included in kit.

- Mounting Anchors

- Left Frame (Unassembled)
- Right Frame



WARNING

FALL HAZARD

A fall while working at or near edge could lead to death or serious injury. All workers must first be tied-off to an OSHA approved fall arrest system when installing Ledgeguard. Workers must remain attached to the fall arrest system until installation is complete.

INSTALLATION AND OPERATION INSTRUCTIONS

Keep this Manual with the MEZZANINE GATE system at all times. This will allow new users to read it before using system.

It is the MEZZANINE GATE owner's responsibility to ensure that all workers installing or using this system are thoroughly trained. Provide workers with this Installation Manual and make sure they understand its contents. Read it to them if necessary. Letting poorly trained workers use this system can result in property damage and/or serious injury or death to personnel.

Installation Requirements:

Installation instructions must be followed to comply with OSHA 1910 and OSHA 1926.

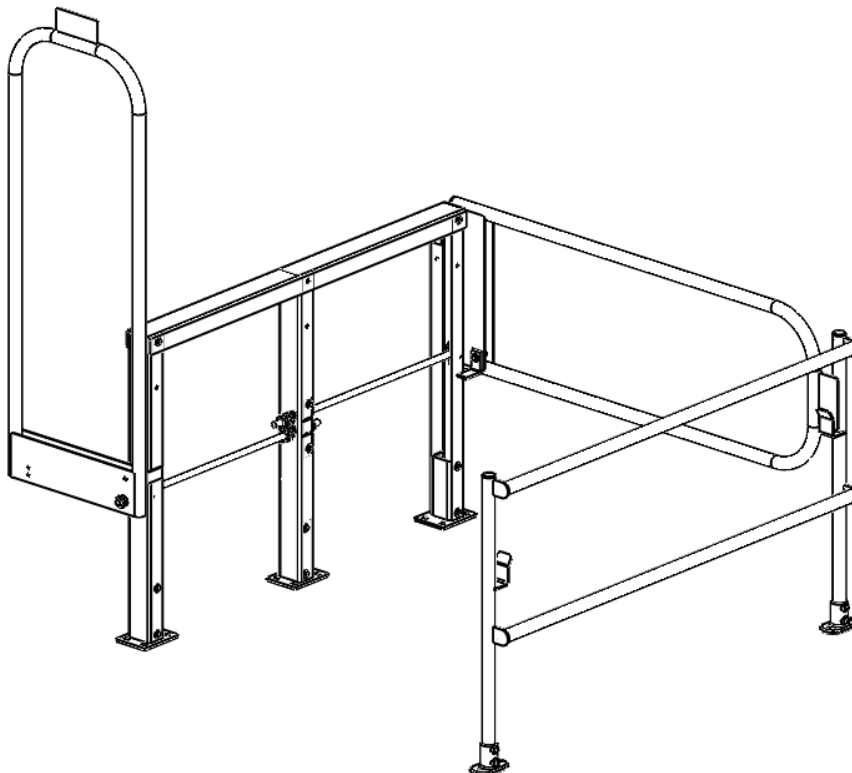
System requirements:

1. Make sure your mezzanine is capable of supporting the combined weight of the MEZZANINE GATE System (270 lbs for 48" system), loaded pallets, all personnel and all material moving equipment used near gate system.
2. **Consult your building architect to calculate these loads and ensure this load carrying capacity.**
3. System must be attached to a permanent, firmly secured mezzanine floor; not unsupported plywood sheathing or temporary structure at the mezzanine edge.

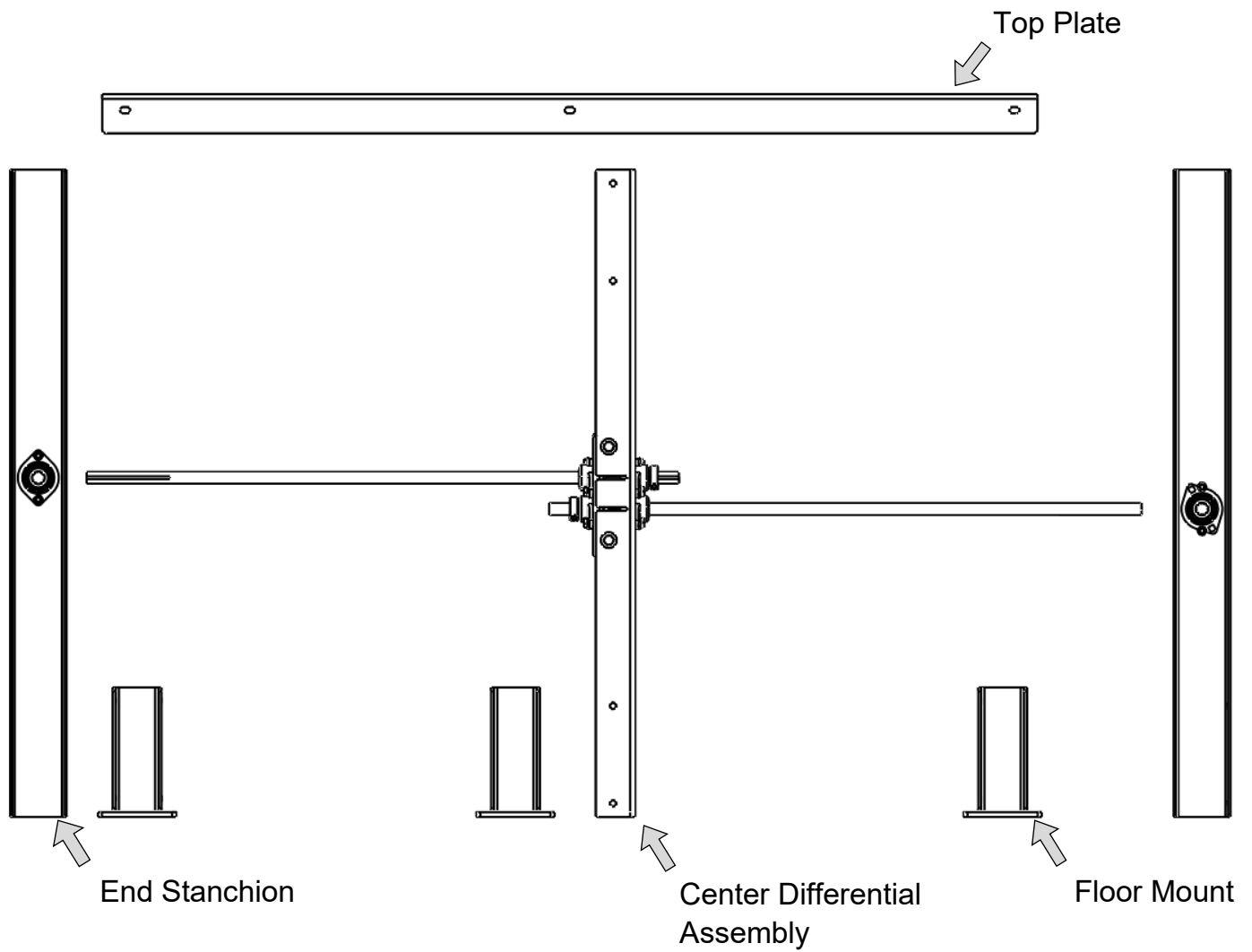
Site Preparation:

1. Move all tools and trip hazards a minimum of 10 ft back from mezzanine edge.
2. Be sure you are installing the MEZZANINE GATE System to a permanent and secure structure at mezzanine edge.

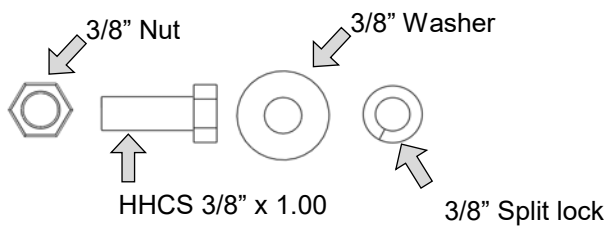
BEFORE INSTALLING MEZZANINE GATE SYSTEM: READ, UNDERSTAND AND FOLLOW THESE INSTRUCTIONS FOR INSTALLING AND USING SYSTEM!



Left Frame Assembly



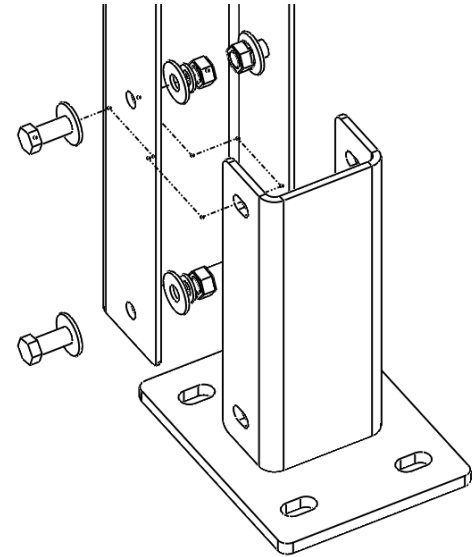
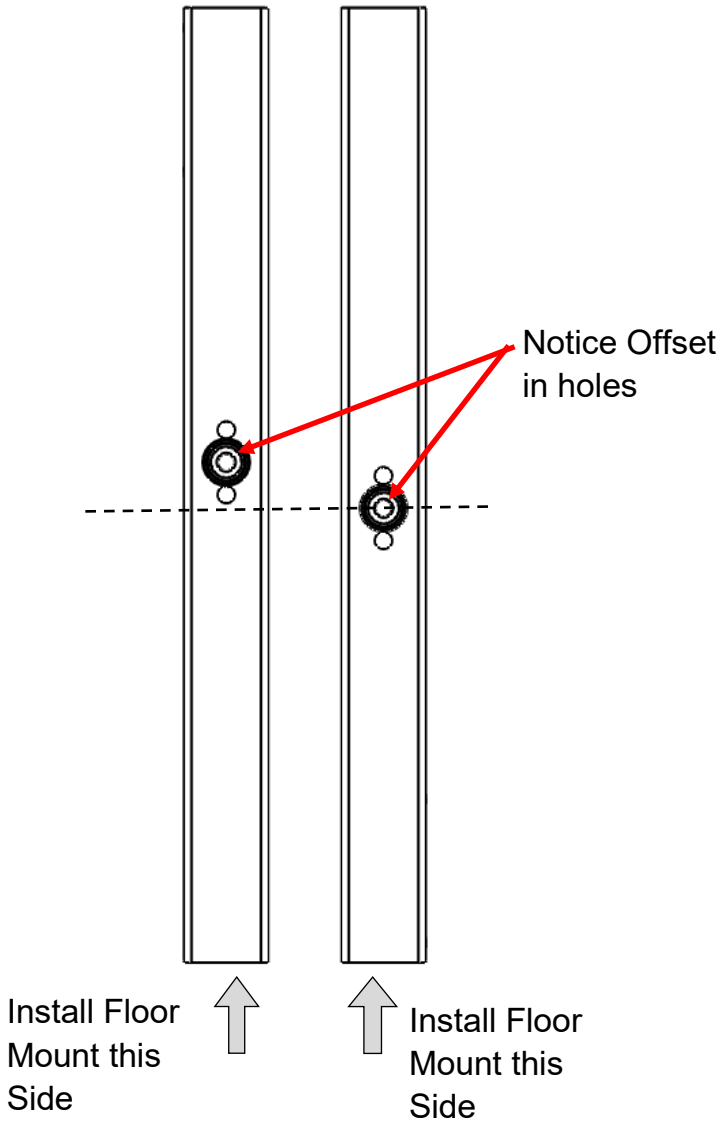
Hardware:



Step 1:

Mount Floor Mount base to End Stanchions and Center Differential Assembly.

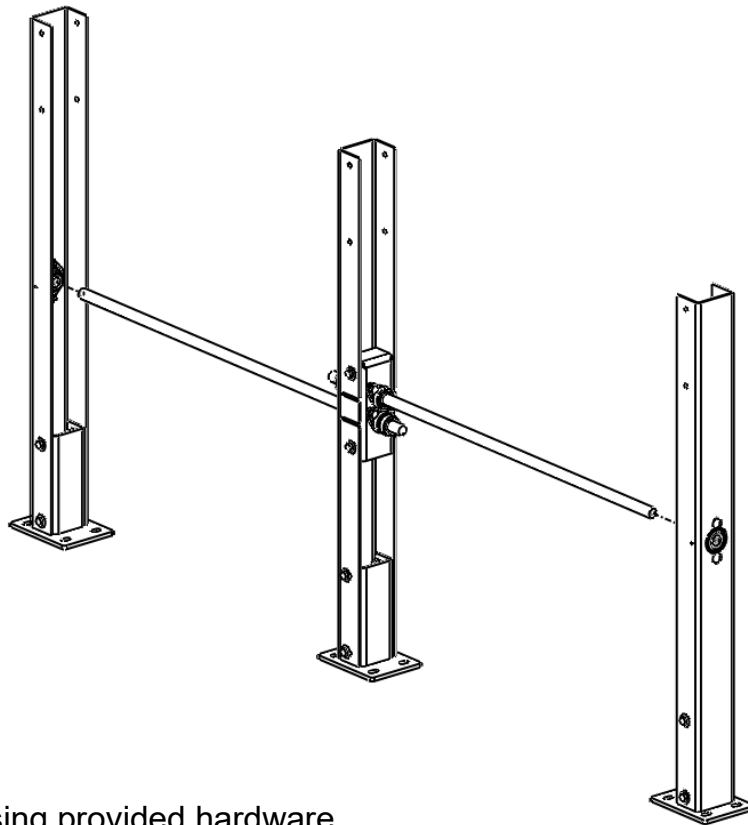
Note: Holes in End Stanchion are not centered vertically.



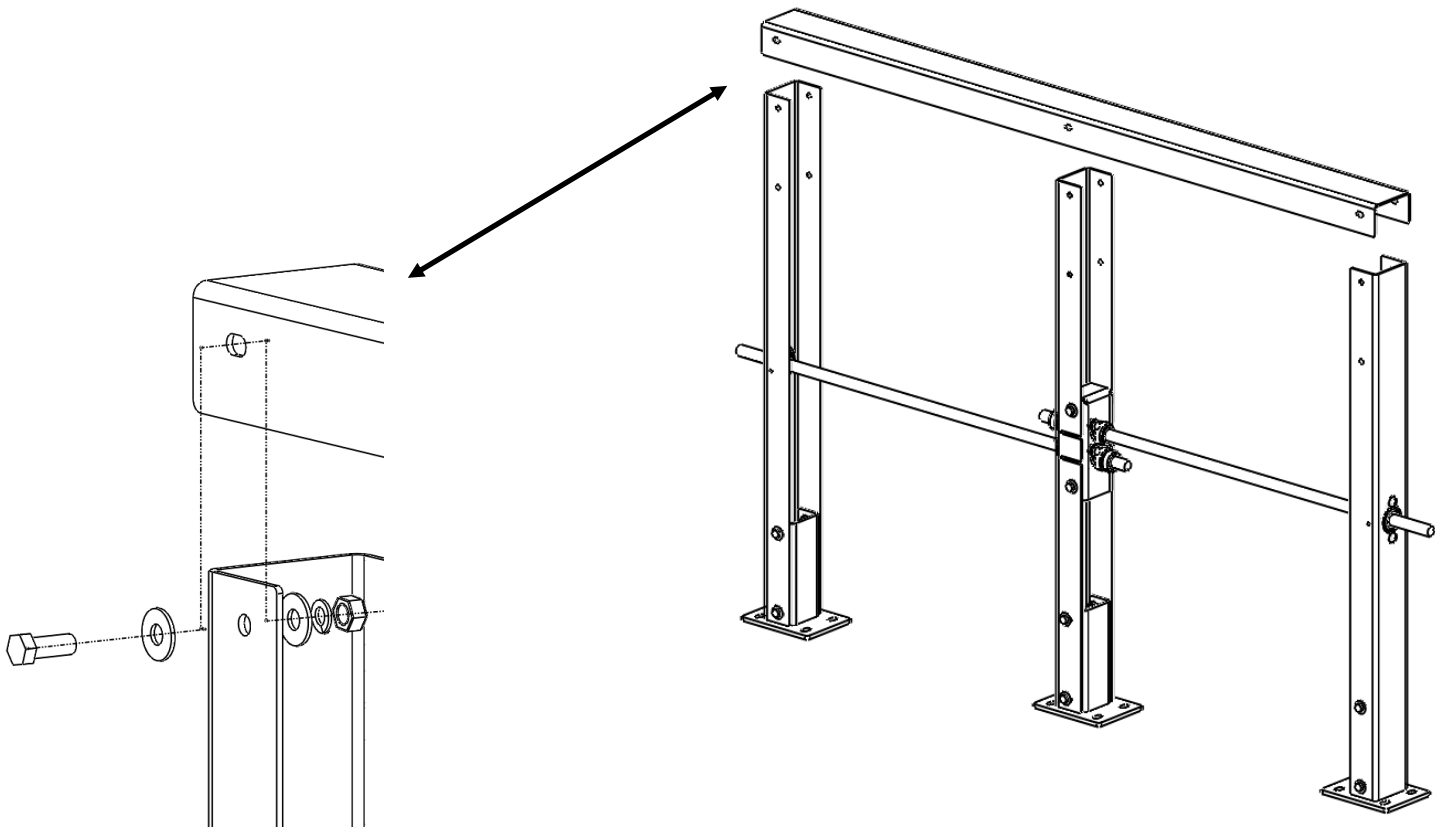
Step 2:

Slide End Stanchions onto Center Differential Shaft Assembly.

Note: Pillow Block Bearings should be loose so shaft can be aligned.

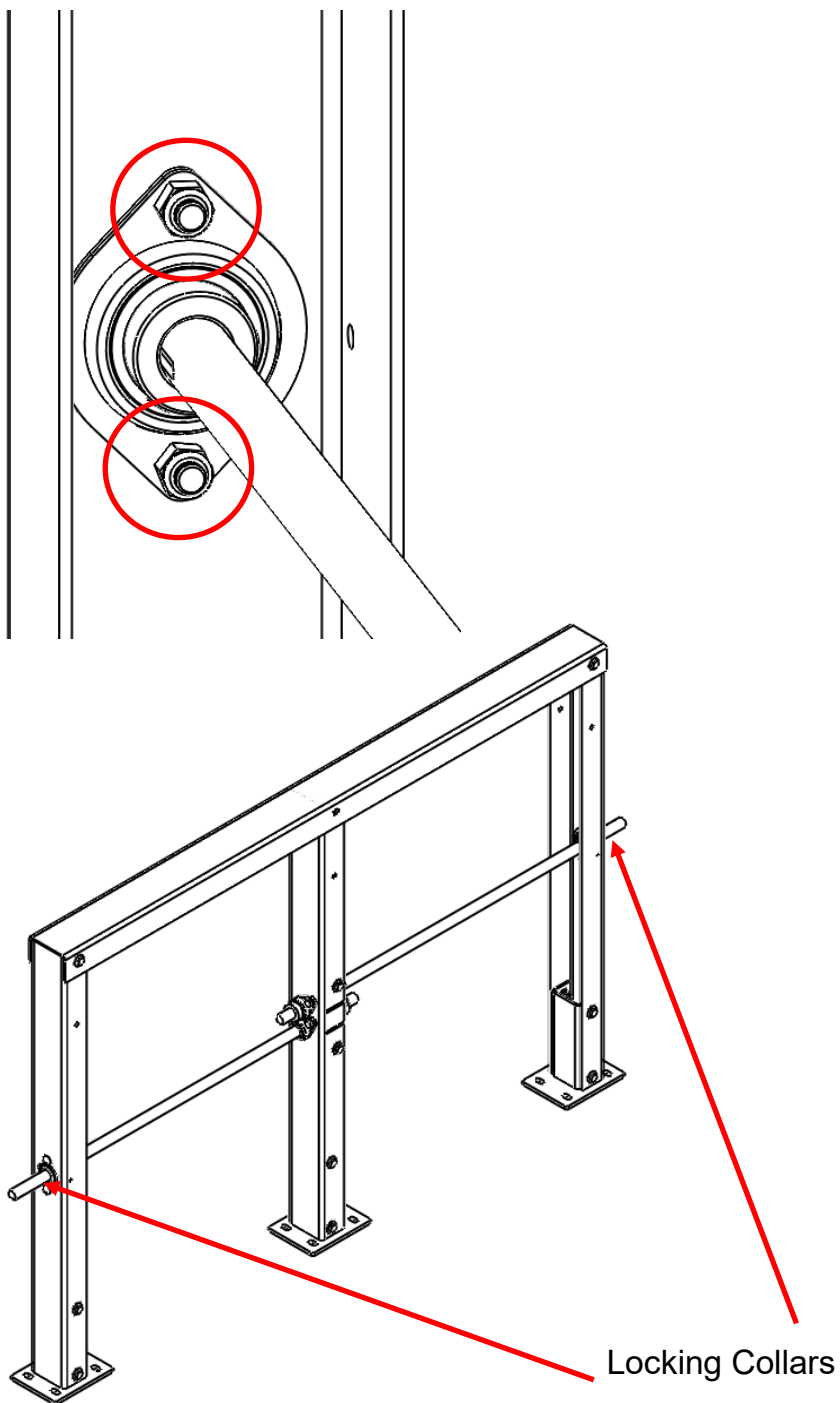
**Step 3:**

Install Top Plate using provided hardware



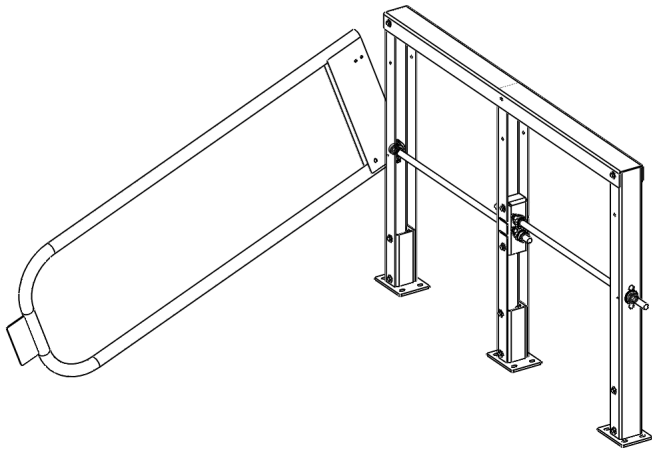
Step 4:

With Top Plate installed, Tighten nuts on bearings block and install locking collar on outside of frame.



Left Frame Assembly Complete.

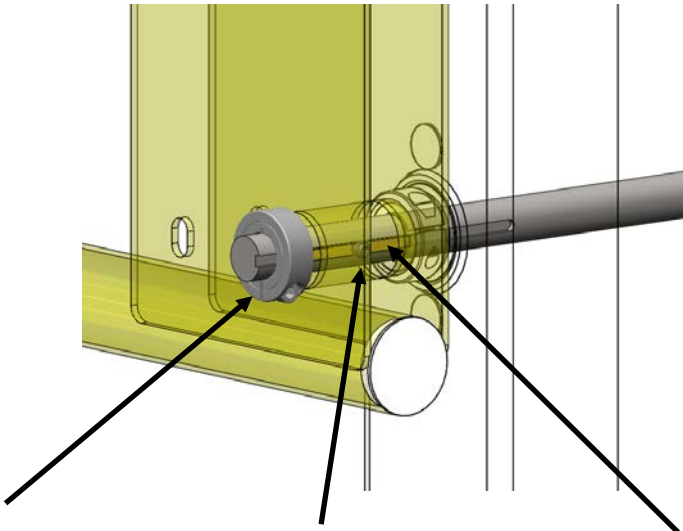
Outside Gate Installation



Step 1:

Install Outside gate onto Left Frame Assembly.

Notice outside gate is installed on the up-most shaft.



Step 2:

Install key into keyway. Secure gate with locking collars (152797).

Step 3:

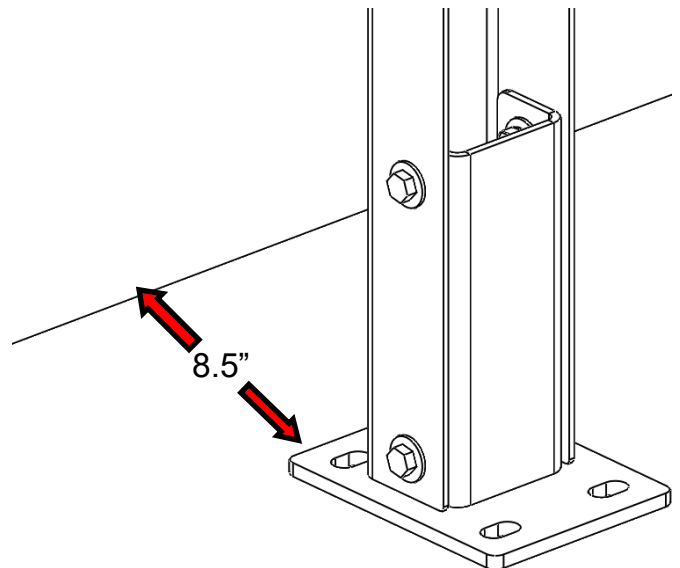
Slide left frame assembly to edge of mezzanine.

The edge of plate should be roughly 8.5 inches back from edge of mezzanine.



NOTICE

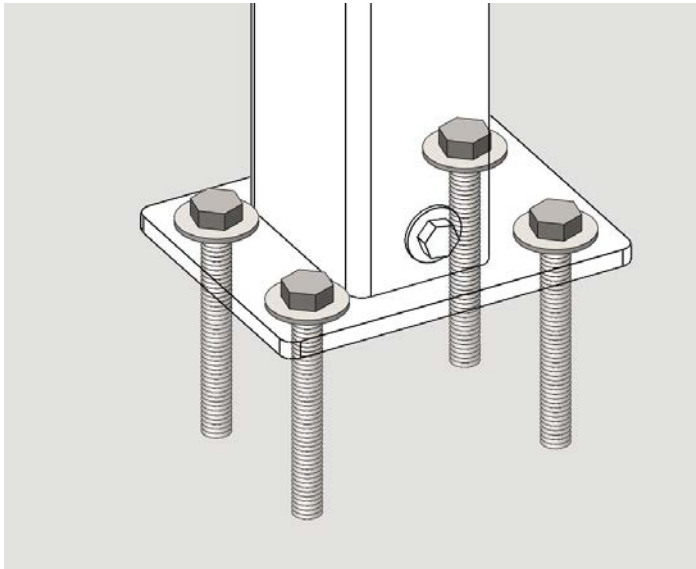
Make sure you are not going to drill through beams, channels, folded edges or any hidden wires or piping.



Mounting Left Frame

Step 1:

With Left frame in location. Mark the ground and drill holes in mezzanine floor using 1/2" diameter drill bit. The left frame utilizes 12 holes.



Insert Bolts through plates and mezzanine floor.

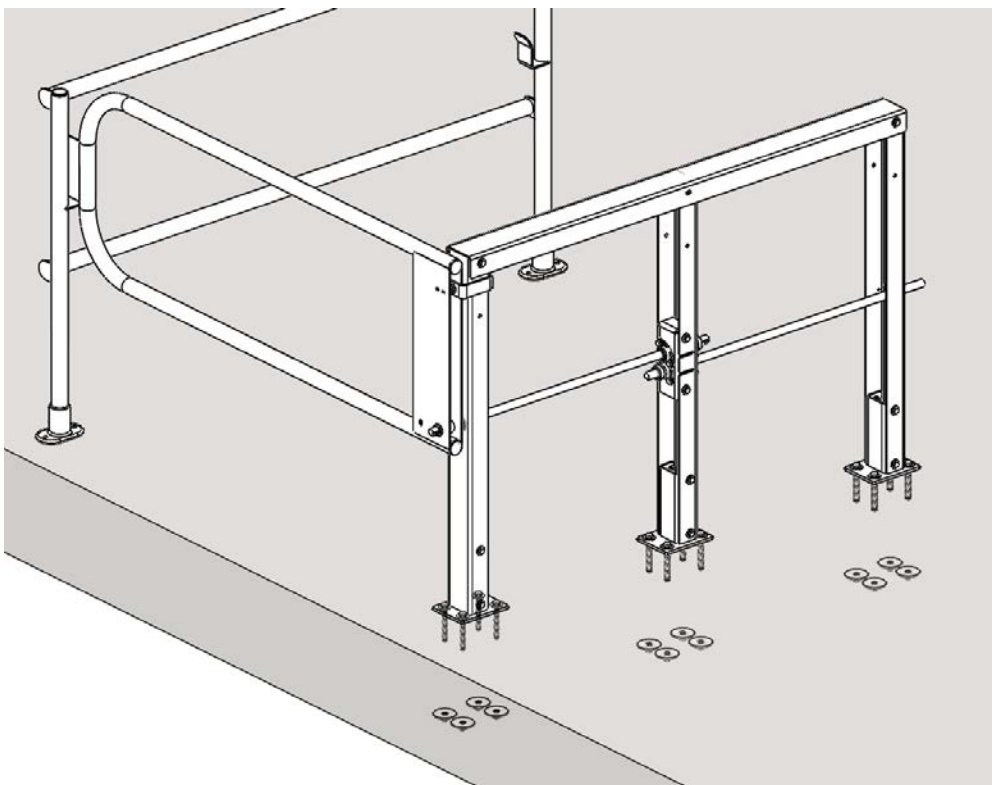
Recommended hardware (not provided):

1/2" x4" HHCS (100274)

1/2" Washer (100457)

1/2"x2.5OD Washer (100196)

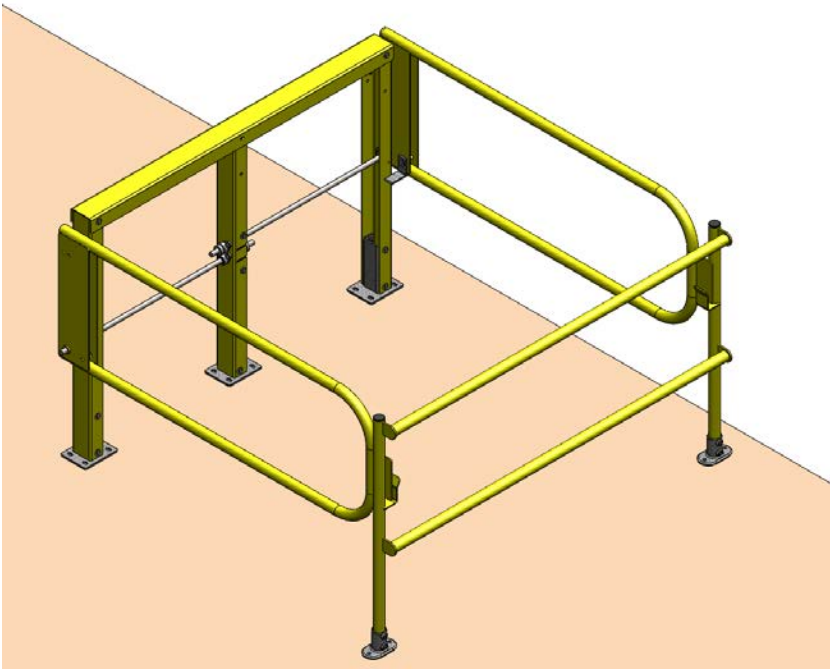
1/2" Plastic lock nut (100170)



Step 2:

With the Left Frame mount, bring the right frame into position where the inside gates rests in place.

Inside Gate Installation

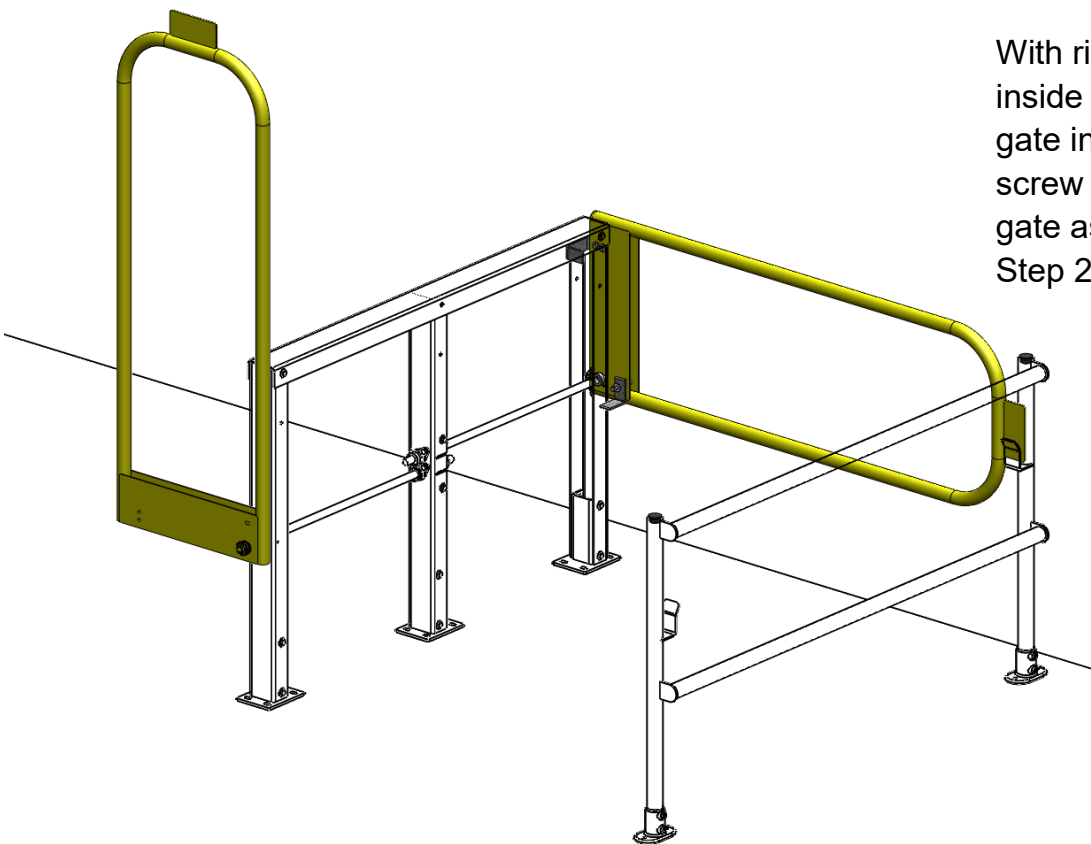


Step 1:

With the right frame in position, slide inside gate onto the left frame assembly.

Ensure right frame is aligned.

Once aligned, mark floor and mount fittings to the mezzanine using 1/2" hardware and fender washer.



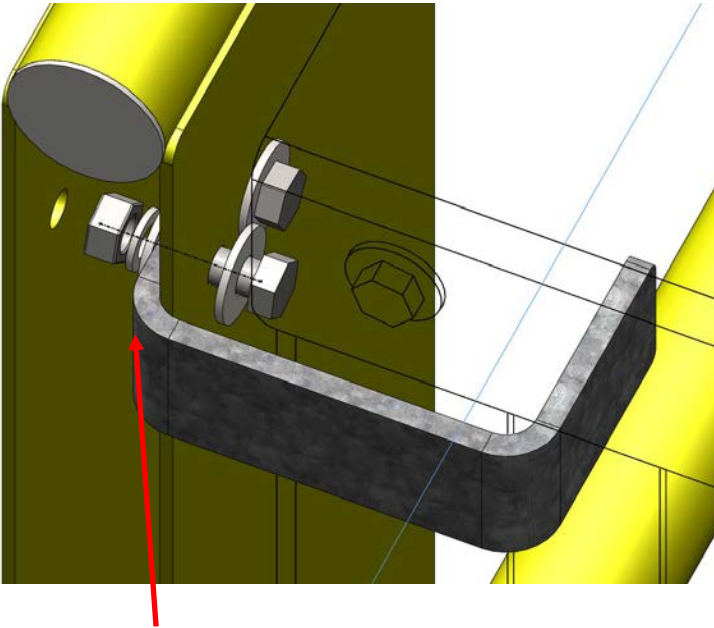
Step 2:

With right frame mounted, rotate inside gate up 90.° With inside gate in position insert key, set screw and locking collar to secure gate as previously completed in Step 2 on page 8.

Gate Stop Installation

Step 1:

Install Upper Gate stop onto both gates.

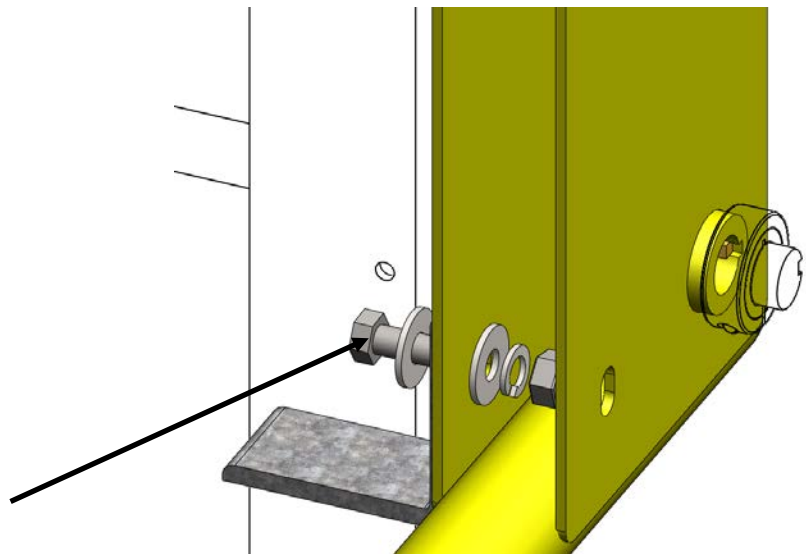


Use 3/8" x1.25 Bolt, washer, locking washer lock nut.

Step 2:

Install Lower Gate stop onto both gates.

Use 3/8" x1.25 Bolt, washer, locking washer lock nut.



155656

Step 3:

Install Cover onto Right frame weldment and end caps on both gates.

