

RailGuard 200 Permanent Mount Safety Railings



Standardize on Permanent Rail for personnel safety and machinery guarding indoors or out. Permanent Rail can be used for loading docks, stairways, mezzanines or any hazard area. With one of our many base options, we can customize a solution to meet your needs. Available in standard Safety Yellow or a variety of colors to match your facility. Contact one of our Safety Experts to help you plan fall prevention and personnel safety inside and outside your plant with Permanent Rail that features:

- 16 gauge Construction welded rail sections that secure to floor or wall areas for permanent applications.
- Meets OSHA 1910.23(c)
- Standard lengths from 2 to 12 feet. Custom lengths also available.
- Powdered coated Safety yellow. Many color options available.
- Multiple base mounting options.

Standard railings in 5', 7' ½' and 10' lengths powder coated in safety yellow with multiple mounting options (floor and wall). Railings are 1-5/8" diameter and weigh 23-28 lbs. per section. Custom colors also available.



Multiple color options available.



visit ralcolor.com for color choices.

RailGuard 200 Permanent Mount Safety Railings



Single Post
Floor Mount



Double Post
Floor Mount



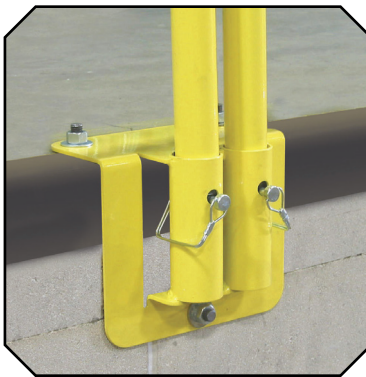
Box Floor Mount



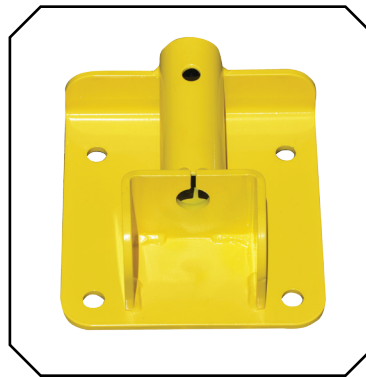
Zip Base



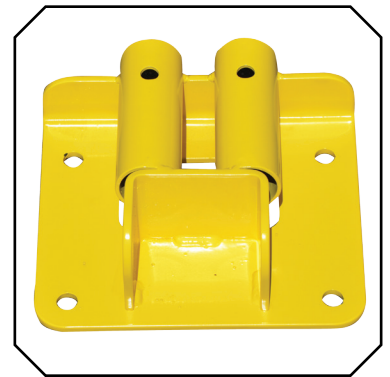
Wrap Over
Single Post



Wrap Over
Double Post



Flush Mount
Single Post



Flush Mount
Double Post

SPECIFICATIONS

Meets OSHA
1910.23(c)

	Weight (lbs)	Floor Space (in)		Wall Space (in)	
		Width	Length	Width	Height
Single Post Floor Mount	5	5.5	7.5	NA	NA
Double Post Mount	6	5.5	7.5	NA	NA
Box Floor Mount	9	6.5	7.5	NA	NA
Zip Base	2.3	3.25	5.5	NA	NA
Wrap Over Single Post	8	8	6	8	8.75
Wrap Over Double Post	10	9	6	9	8.75
Flush Mount Single Post	8	NA	NA	8	8.75
Flush Double Post	10	NA	NA	10	8.75
Wrap Over Box Mount	10	9	6	9	8.75



Wrap Over Box Mount

FULL PRODUCT LINE



Distributed By:



2601 Niagara Lane North Plymouth, MN 55447
(877) 791-4446 / P: (763) 694-2624 / F: (800) 820-3268
www.garlocksafety.com