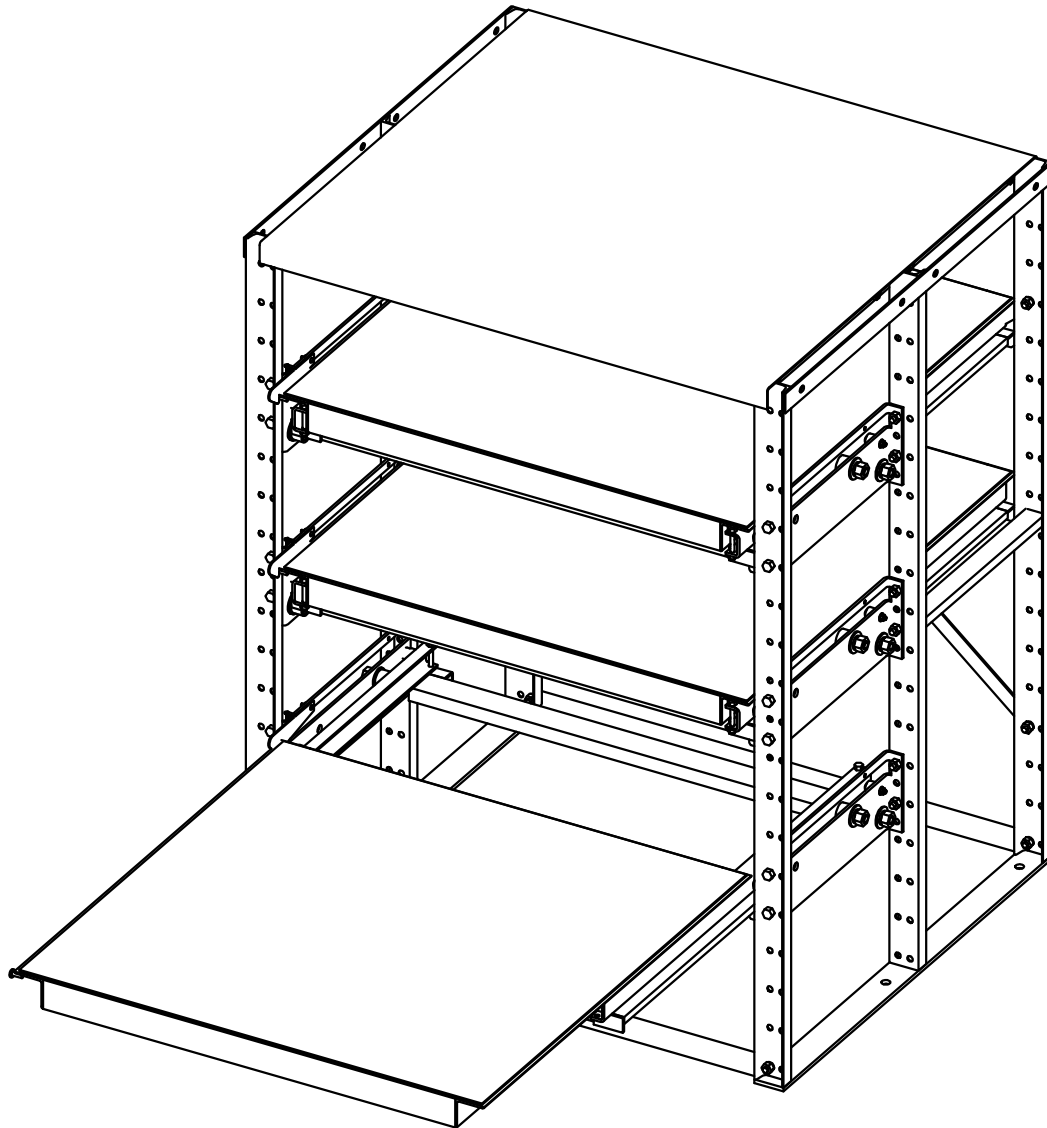


SFG

STORAGE PRODUCTS GROUP

EZ-GLIDE

ROLL OUT SHELVING SYSTEM



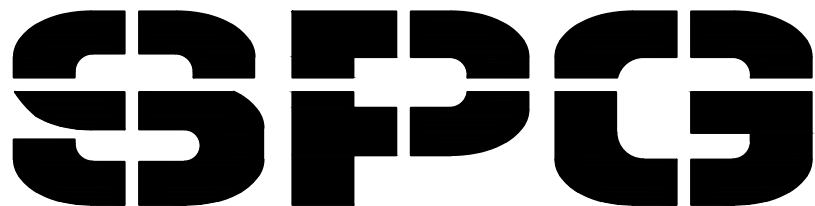
ASSEMBLY & USAGE INSTRUCTIONS

EZ-GLIDE

ASSEMBLY INSTRUCTIONS

TABLE OF CONTENTS

PAGE 1 - TABLE OF CONTENTS
PAGE 2 - COMPONENT HARDWARE LIST
PAGE 3 - ASSEMBLY PRECAUTIONS AND PROCEDURES
PAGE 4 - FRAME ASSEMBLY
PAGE 5 - ROLLER PLATE INSTALLATION
PAGE 6 - ROLLER PLATE ASSEMBLY
PAGE 7 - ROLLER PLATE ASSEMBLY
PAGE 8 - TRACK ASSEMBLY INSTRUCTIONS
PAGE 9 - TRACK AND SHELF INSTALLATION
PAGE 10 - SHELF STOP INSTALLATION



STORAGE PRODUCTS GROUP

1555 Highway 75 East, Freeport, Illinois 61032

ph. 815.233.0022

fax. 815.233.3006

EZ-GLIDE

IMPORTANT ASSEMBLY INFORMATION

READ ALL SAFETY PRECAUTIONS & INSTRUCTIONS FIRST.

ASSEMBLY IS BEST ACCOMPLISHED WITH TWO PEOPLE.

ASSEMBLE UNIT ON A LEVEL SURFACE.

USE LOCK NUTS OR LOCK WASHERS ON ALL BOLTS.

FOLLOW STEP BY STEP INSTRUCTIONS CAREFULLY.

DO NOT OVER-TIGHTEN BALL TRANSFERS - TORQUE SHOULD NOT EXCEED 15 FT-LB MAX.

FAILURE TO COMPLY WITH ALL INSTRUCTIONS AND SAFETY PRECAUTIONS MAY RESULT IN PROPERTY DAMAGE AND/OR PERSONAL INJURY.

COMPONENT - HARDWARE LIST

COMMON REPLACEMENT PARTS

PART #	DESCRIPTION
7045	CAM FOLLOWER
7048	BALL TRANSFER
177-602	SHELF LOCK
7050	SHELF LOCK SPRING

SHELF, TRACK AND ROLLER PLATE QUANTITIES LISTED ARE STANDARD QUANTITIES ONLY. QUANTITIES ARE DETERMINED BY CUSTOMER REQUIREMENTS.

UNIT PART#	QTY	COMPONENTS							HARDWARE			
		P/N	FRAME	TOP	SHELF	TRACK	ROLLER PL	CROSS TIE	X-BRACE	FRAME	SHELF	ROLLER PL
EZ363662	QTY		2	1	3	3	6	2	2	1	1/SHELF	1/SHELF
	P/N	EZFRM3662	EZTP3636	EZ-3636-SHELF	EZ-3636-TRACK	EZ-36RPLT	CR-36	XS-36	PKS182	PKS139	PKS183	
EZ363672	QTY		2	1	3	3	6	2	2	1	1/SHELF	1/SHELF
	P/N	EZFRM3672	EZTP3636	EZ-3636-SHELF	EZ-3636-TRACK	EZ-36RPLT	CR-36	XS-36	PKS182	PKS139	PKS183	
EZ363684	QTY		2	1	4	4	8	2	2	1	1/SHELF	1/SHELF
	P/N	EZFRM3684	EZTP3636	EZ-3636-SHELF	EZ-3636-TRACK	EZ-36RPLT	CR-36	XS-36	PKS182	PKS139	PKS183	
EZ483662	QTY		2	1	3	3	6	2	2	1	1/SHELF	1/SHELF
	P/N	EZFRM3662	EZTP4836	EZ-4836-SHELF	EZ-4836-TRACK	EZ-36RPLT	CR-48	XS-48	PKS182	PKS139	PKS183	
EZ483672	QTY		2	1	3	3	6	2	2	1	1/SHELF	1/SHELF
	P/N	EZFRM3672	EZTP4836	EZ-4836-SHELF	EZ-4836-TRACK	EZ-36RPLT	CR-48	XS-48	PKS182	PKS139	PKS183	
EZ483684	QTY		2	1	4	4	8	2	2	1	1/SHELF	1/SHELF
	P/N	EZFRM3684	EZTP4836	EZ-4836-SHELF	EZ-4836-TRACK	EZ-36RPLT	CR-48	XS-48	PKS182	PKS139	PKS183	
EZ484862	QTY		2	1	3	3	6	2	2	1	1/SHELF	1/SHELF
	P/N	EZFRM4862	EZTP4848	EZ-4848-SHELF	EZ-4848-TRACK	EZ-48RPLT	CR-48	XS-48	PKS182	PKS139	PKS183	
EZ484872	QTY		2	1	3	3	6	2	2	1	1/SHELF	1/SHELF
	P/N	EZFRM4872	EZTP4848	EZ-4848-SHELF	EZ-4848-TRACK	EZ-48RPLT	CR-48	XS-48	PKS182	PKS139	PKS183	
EZ484884	QTY		2	1	4	4	8	2	2	1	1/SHELF	1/SHELF
	P/N	EZFRM4884	EZTP4848	EZ-4848-SHELF	EZ-4848-TRACK	EZ-48RPLT	CR-48	XS-48	PKS182	PKS139	PKS183	

EZ-GLIDE

ASSEMBLY PRECAUTIONS AND PROCEDURES

IMPORTANT SAFETY PRECAUTIONS

1. DO NOT USE THIS UNIT UNTIL IT IS SECURELY ANCHORED TO THE FLOOR OR BACK WALL AND LEVELED TO WITHIN $\pm 1/32$ FRONT TO BACK.
2. DO NOT USE SHELVES UNLESS ALL STOP BOLTS AND ALL TAB STOPS ARE INSTALLED.
3. EXTEND ONLY ONE SHELF AT A TIME.
4. DO NOT LOAD SHELVES WITH MORE THAN 2000 LBS.
5. DISTRIBUTE WEIGHT EVENLY ON EACH SHELF.
6. DO NOT STAND ON SHELVES.
7. DO NOT USE SHELF AS A WORKBENCH.
8. PULL OUT AND PUSH SHELVES IN SLOWLY.
9. DO NOT PICK UP OR SLIDE ASSEMBLED SHELF UNIT.
10. KEEP FINGERS AND HANDS AWAY FROM ROLLERS.

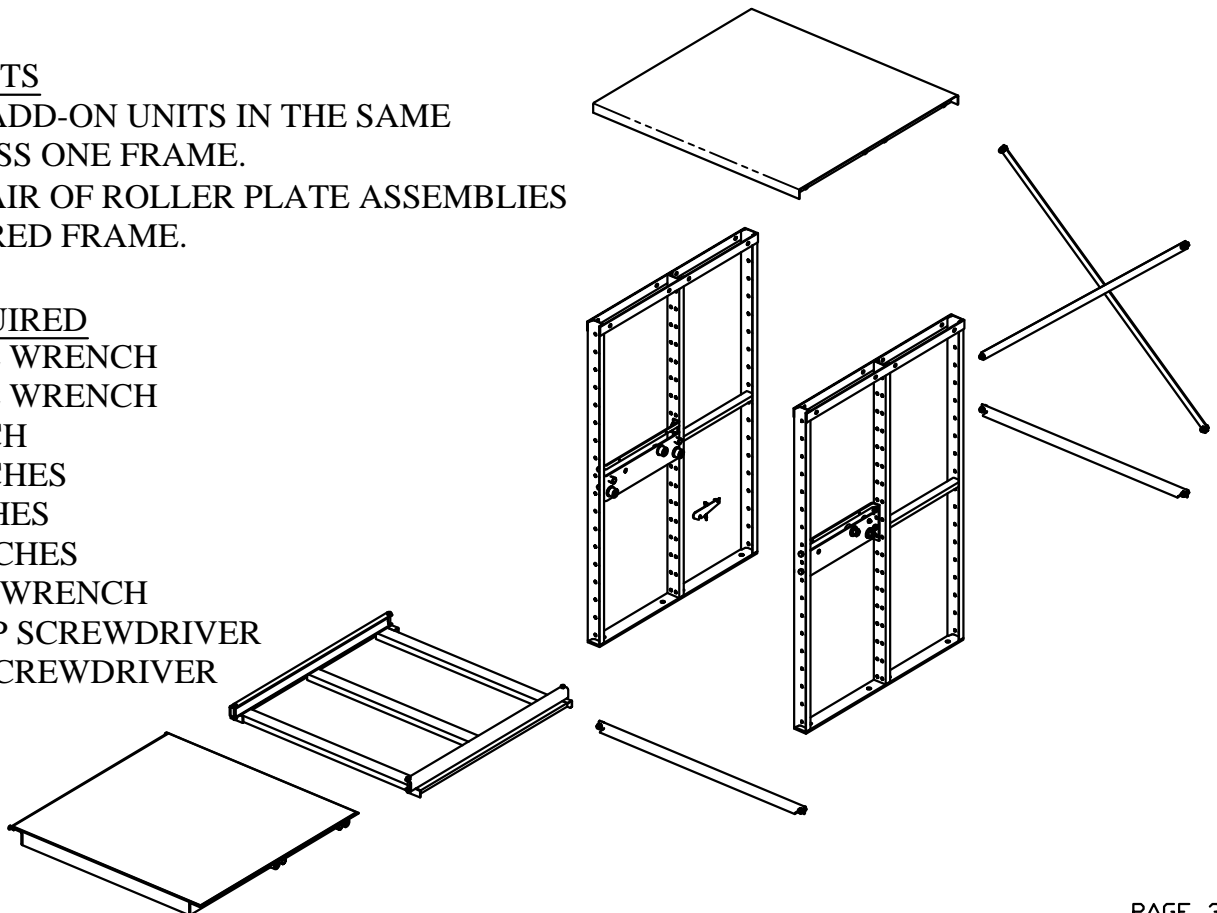
ADD-ON UNITS

ASSEMBLE ADD-ON UNITS IN THE SAME MANNER LESS ONE FRAME.

MOUNT A PAIR OF ROLLER PLATE ASSEMBLIES IN THE SHARED FRAME.

TOOLS REQUIRED

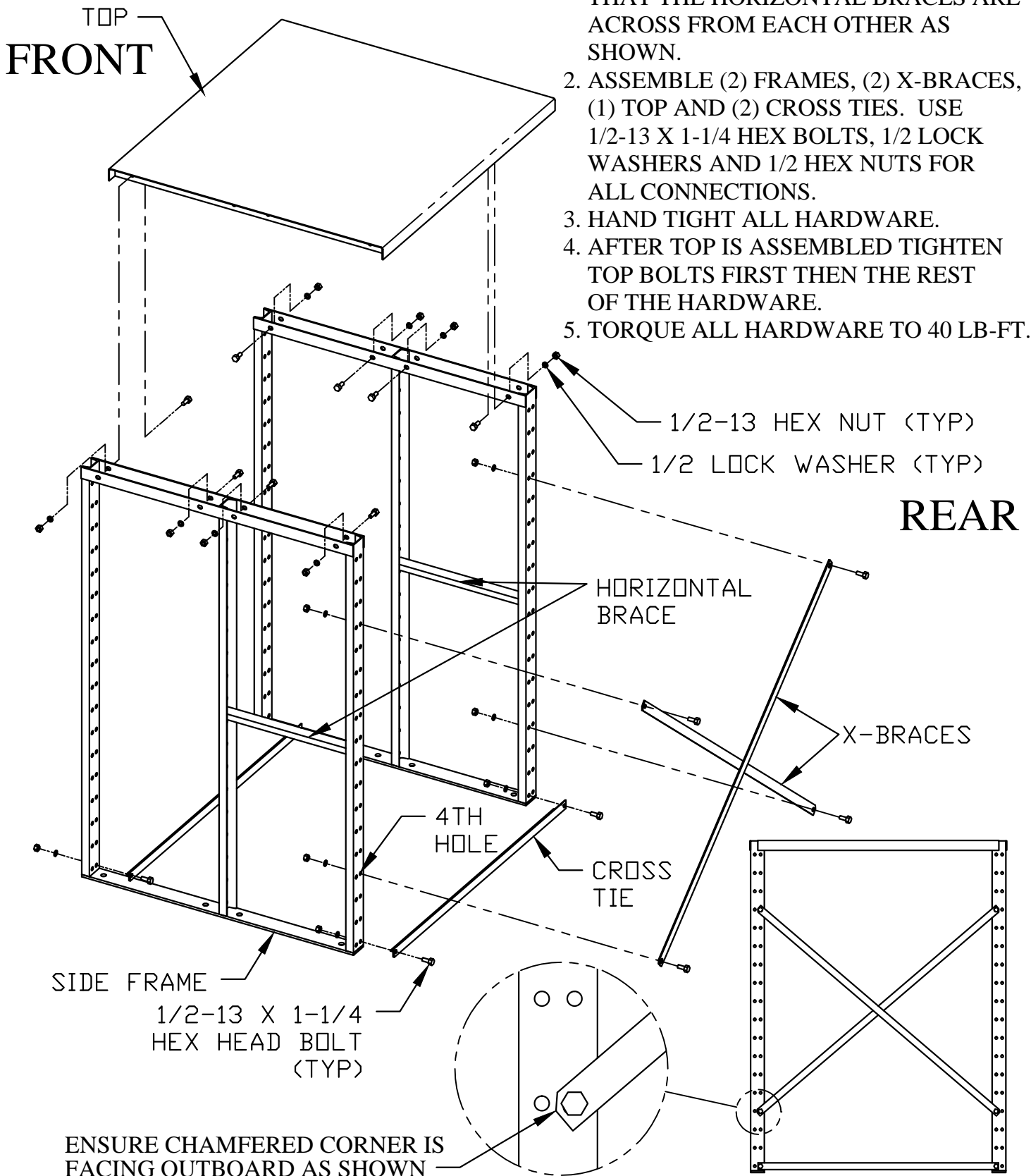
3/4" TORQUE WRENCH
1/2" TORQUE WRENCH
7/16" WRENCH
9/16" WRENCHES
3/4" WRENCHES
1-1/8" WRENCHES
5/16" ALLEN WRENCH
SLOTTED TIP SCREWDRIVER
CROSS TIP SCREWDRIVER



STEP 1 - FRAME ASSEMBLY

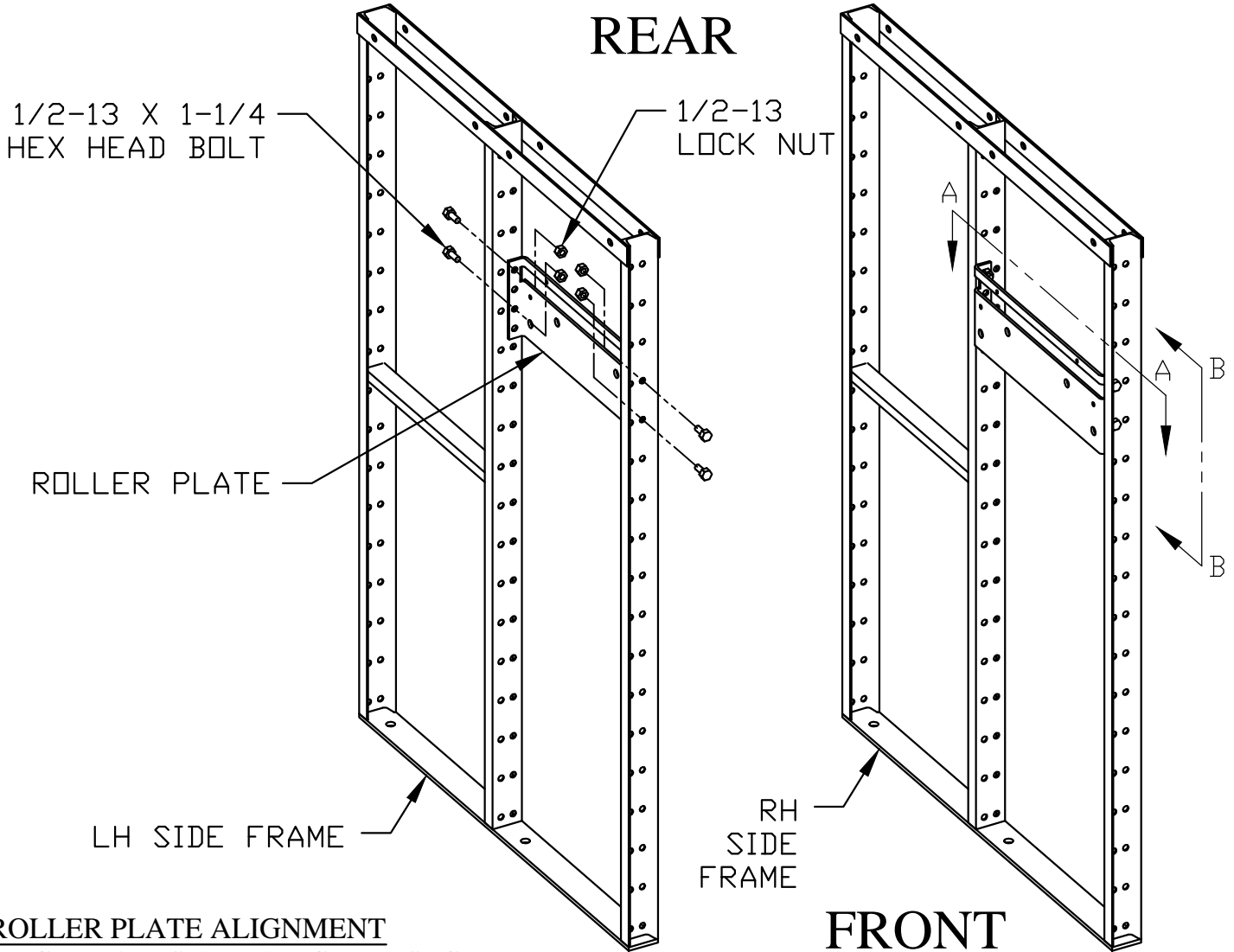
HARDWARE FOR FRAME IS IN BAG # PKS182

1. ENSURE FRAMES ARE ORIENTED SO THAT THE HORIZONTAL BRACES ARE ACROSS FROM EACH OTHER AS SHOWN.
2. ASSEMBLE (2) FRAMES, (2) X-BRACES, (1) TOP AND (2) CROSS TIES. USE 1/2-13 X 1-1/4 HEX BOLTS, 1/2 LOCK WASHERS AND 1/2 HEX NUTS FOR ALL CONNECTIONS.
3. HAND TIGHT ALL HARDWARE.
4. AFTER TOP IS ASSEMBLED TIGHTEN TOP BOLTS FIRST THEN THE REST OF THE HARDWARE.
5. TORQUE ALL HARDWARE TO 40 LB-FT.

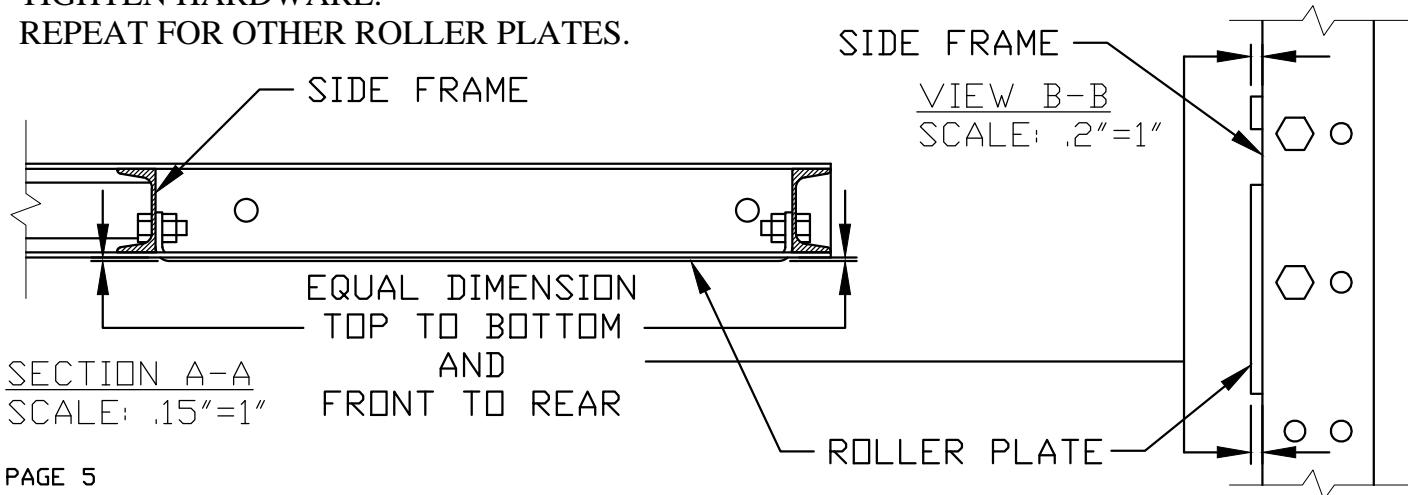


STEP 2 - ROLLER PLATE INSTALLATION

HARDWARE FOR ROLLER PLATE IS IN BAG # PKS183



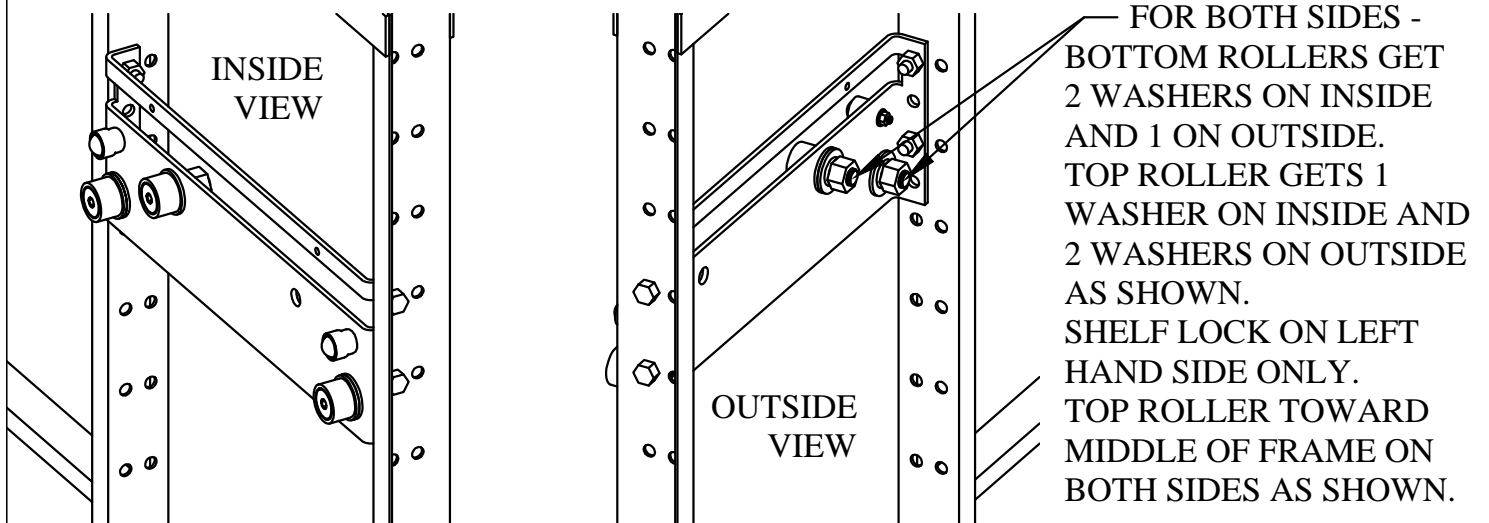
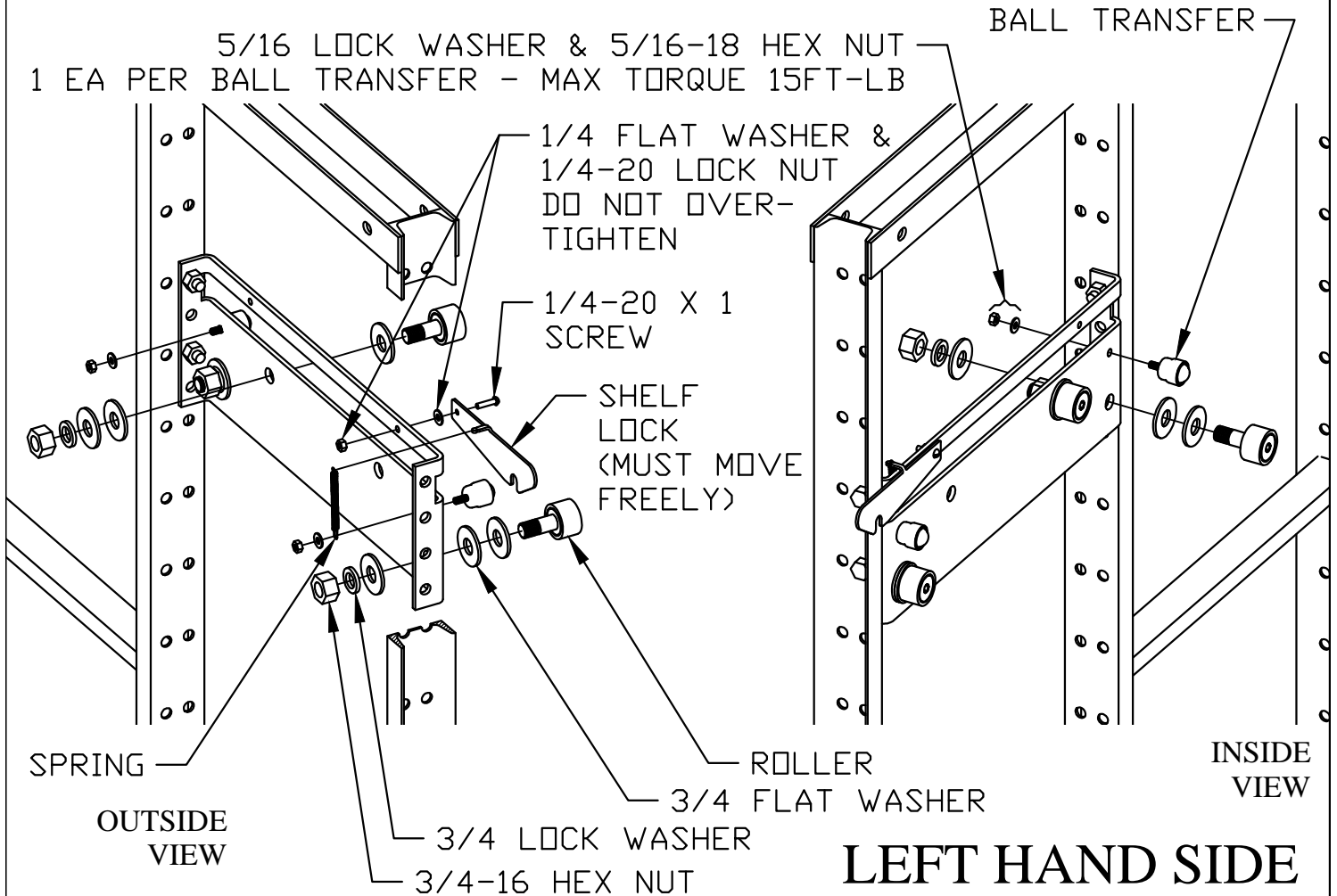
ROLLER PLATE ALIGNMENT
 ONCE PLATES ARE ALIGNED, SECURELY
 TIGHTEN HARDWARE.
 REPEAT FOR OTHER ROLLER PLATES.



STEP 3 - ROLLER PLATE ASSEMBLY

HARDWARE AND COMPONENTS ARE IN BAG # PKS183

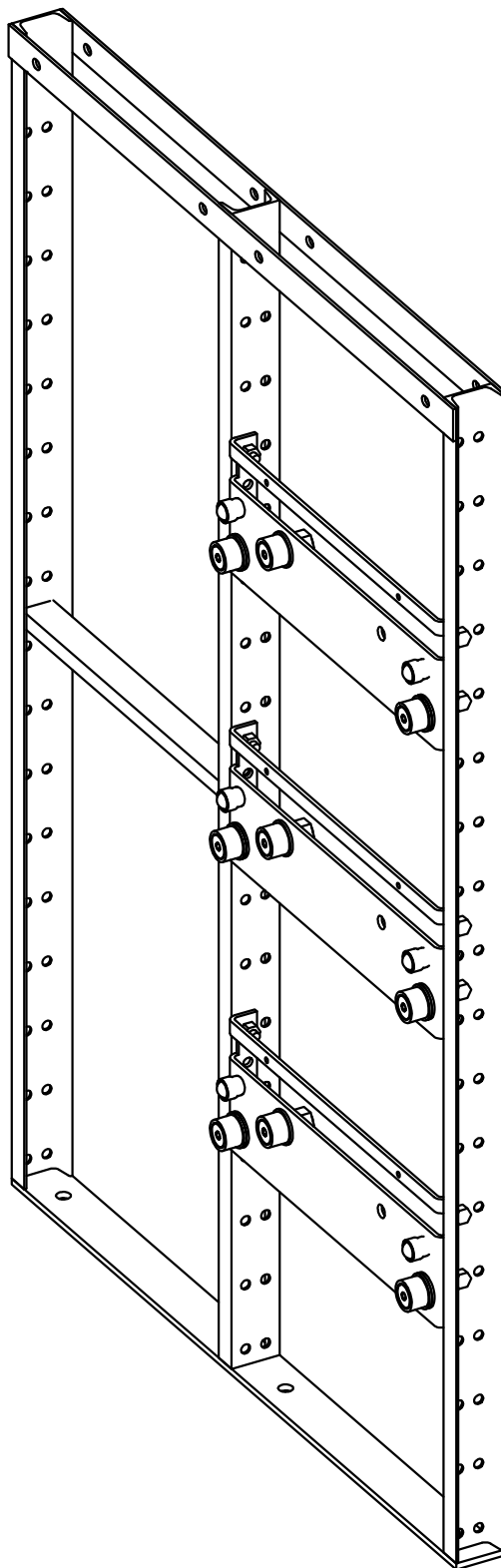
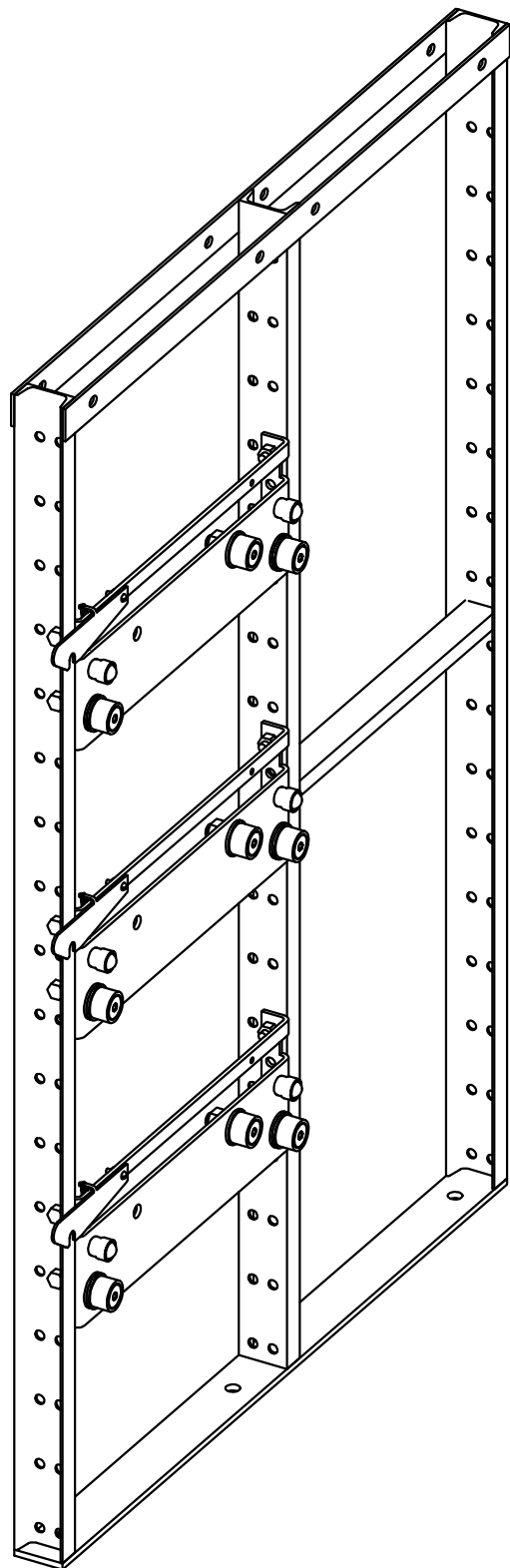
5/16 LOCK WASHER & 5/16-18 HEX NUT
1 EA PER BALL TRANSFER - MAX TORQUE 15FT-LB



RIGHT HAND SIDE

LEFT HAND SIDE

RIGHT HAND SIDE



REAR

FRONT

REPEAT ROLLER PLATE ASSEMBLY FOR THE REST OF THE ROLLER PLATES.
MAKE SURE ROLLER PLATES ARE PLACED DIRECTLY ACROSS FROM EACH OTHER.
IMPORTANT - ROLLER PLATES THAT ARE BUTTED UP AGAINST EACH OTHER WILL
ONLY HAVE AN APPROXIMATELY 3" CLEARANCE BETWEEN THE LOWER SHELF AND
THE SHELF TRACK ABOVE IT.

STEP 4 - SHELF ASSEMBLY

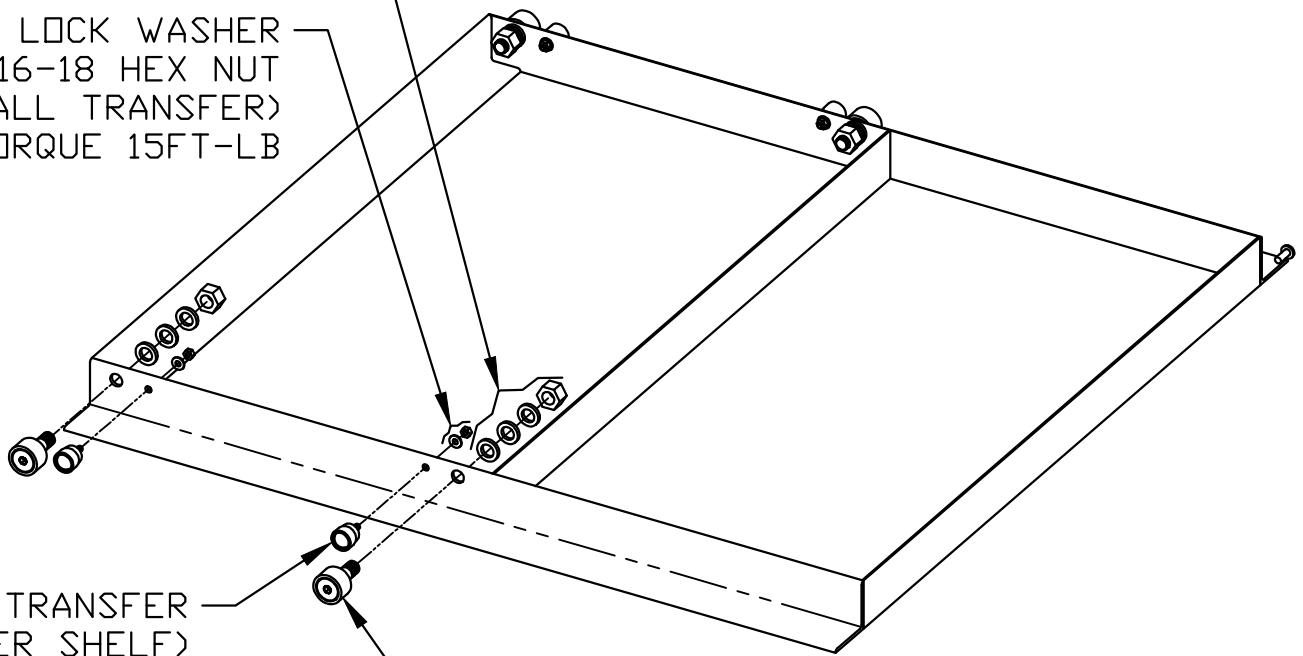
HARDWARE FOR SHELF IS IN BAG # PKS139

3/4 LOCK WASHER (X3)
& 3/4-16 HEX NUT
(PER ROLLER)

5/16 LOCK WASHER
5/16-18 HEX NUT
(PER BALL TRANSFER)
MAX TORQUE 15FT-LB

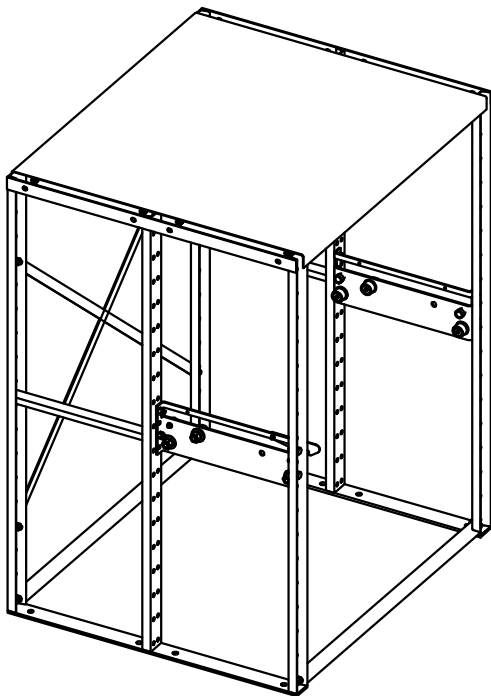
BALL TRANSFER
(4 PER SHELF)

ROLLER
(4 PER SHELF)

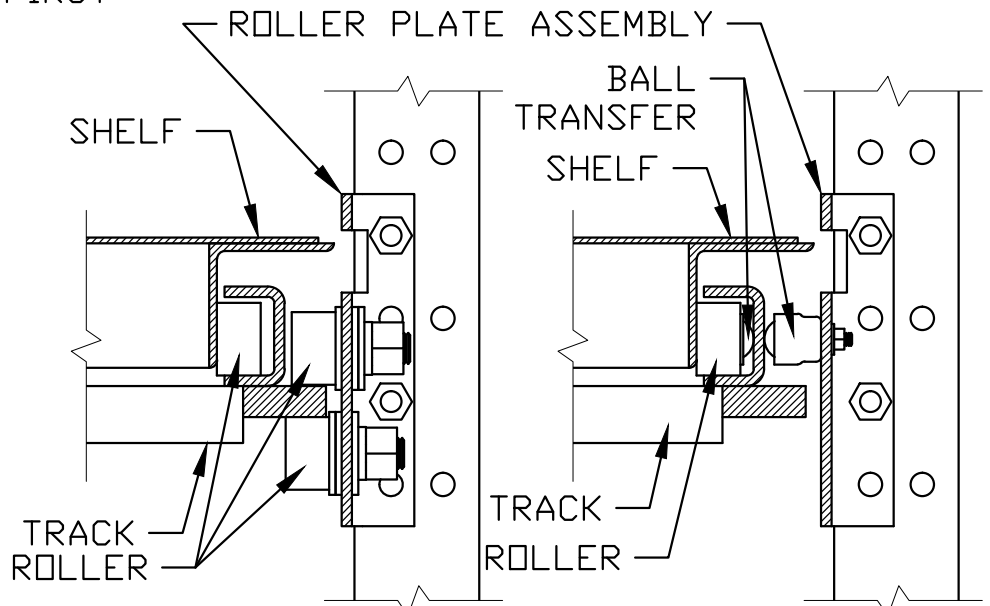
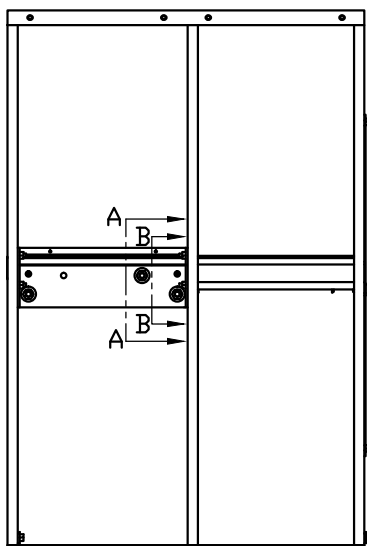
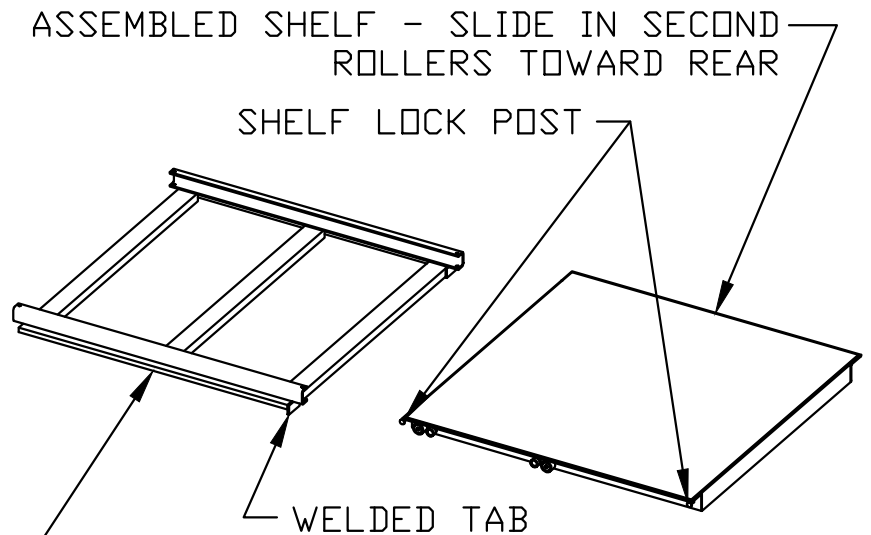


STEP 5 - SHELF AND TRACK INSTALLATION

1. ENSURE TRACK CHANNELS ARE FACING UPWARD AND THE WELDED TABS ARE AWAY FROM THE RACK AS SHOWN BELOW.
2. SLIDE TRACK INTO RACK SO THAT THE SIDE BARS SLIDE IN BETWEEN THE BOTTOM 2 ROLLERS AND THE TOP ROLLER AS SHOWN IN SECTION A-A.
3. ENSURE SHELF ROLLERS ARE TOWARD THE RACK AND THE SHELF LOCKING POSTS ARE TO THE LEFT AS SHOWN BELOW.
4. SLIDE SHELF IN SO THAT THE ROLLERS SLIDE INTO THE TRACK CHANNELS AS SHOWN IN THE SECTIONAL VIEWS.



TRACK - SLIDE IN FIRST



SECTION A-A

SECTION B-B

STEPS 6 & 7 - SHELF STOP INSTALLATION

HARDWARE IS IN BAG # PKS139

IMPORTANT: STEP 6 MUST BE DONE BEFORE STEP 7 ON EVERY SHELF.

STEP 6: PULL FRONT OF TRACK OUT AND INSTALL BOLT & NUT AS SHOWN.

NOTE: YOU MAY HAVE TO PUSH SHELF BACK A LITTLE TO INSTALL HARDWARE.

STEP 7: PUSH TRACK ALL THE WAY IN AND PULL SHELF OUT PAST TRACK ABOUT 6" GO TO REAR OF RACK AND BOLT ON SHELF STOPS AS SHOWN. NOTE: ENSURE THAT THE STOP IS ORIENTATED WITH THE BEND TOWARD THE RACK AS SHOWN.

3/8-16 X 3 HEX HEAD BOLT
(TYP)

