

More than you expected.

Goff's



Clean Guard Doors

Keep your wash down areas separated & sanitized.

When wash down procedures are required in your facility, choose Clean Guard.

Keep your clean areas separate & sanitized.

During wash down cycles in food processing facilities, production is halted and valuable time is lost. Clean Guard was **designed & manufactured with wash down procedures in mind**. This door delivers maximum up-time and productivity, protecting areas from overspray and contamination.

Wash down your facility with ease:

Minimize downtime and maximize productivity.

Clean Guard includes an IP-65 wash down rated motor that can operate your door at 20" or 42"/sec. Our Intelligent Control System includes a VFD and PLC enclosed in a NEMA4X control panel.

Committed to keeping you safe.

To maximize safety in your facility, Clean Guard comes standard with our fully wash down capable IP-67 photo eye safety sensor. Designed to detect if someone crosses the sensor, the photo eye will stop and reverse the door, ensuring your safety even in wash down applications

Keep water in and contaminants out.

Ensure your facility stays clean with our dual weather seals, a tight floor seal and brush seal at the header. This provides a full perimeter seal on your door preventing cross-contamination.



Optional black and yellow safety bottom pocket pictured.

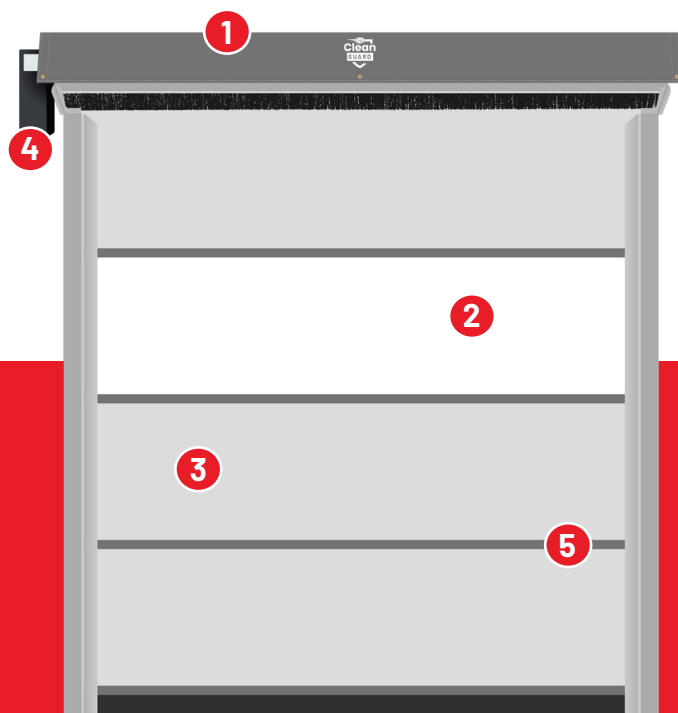


Built with non-corrosive materials:

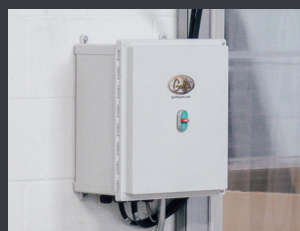
Goff's Clean Guard comes with all non-corrosive material to take on your wash down areas. Our stainless steel components, fiberglass wind bars & chemical resistant PVC side guides protect your door against any rust or deterioration to ensure it stands the test of time.

With Goff's Clean Guard doors, we believe premium options should come standard.

That's why every Goff's High Performance Door Includes:



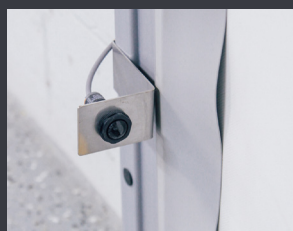
- 1. Full Width Roll Cover** provides environmental separation & prevents contaminants from gathering on the door's inner components.
- 2. Full-width window** increases safety & visibility at your facility to protect employees and provide easy awareness of wash down area activity.
- 3. Easy-to-replace** panels reduce cost of ownership, designed to be affordable and quickly shipped to minimize downtime.
- 4. Auto-close timer** included to minimize wasted energy and potential cross contamination, to keep spaces separated.
- 5. Fiberglass reinforced wind bars** won't take a set or kink if impacted, always returning to their original shape.



NEMA 4X Intelligent control system utilizes PLC & VFD technology to provide up/down speeds, additional sensor compatibility, and more!



Corrosion-resistant materials, including stainless steel hardware and PVC side tracks, ensure longevity & cleanliness.



Standard IP67 photo eye safety sensor specifically designed for wash down applications included to maximize safety.



Dual weather seals help to effectively seal each side of the door to keep water in wash down area & contaminants out.



Pre-assembly by Goff's minimizes your installation time.

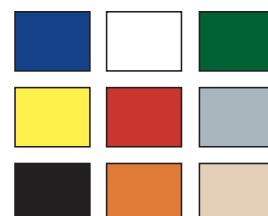


Auto reset feature keeps you up and running if door is impacted.

Vinyl Material Features:

Solid 18oz vinyl comes standard on Clean Guard with one standard vision panel. Optional additional colors are available in any preferred combination to work with your space.

18 oz Vinyl Color Options:



Goff's delivers more than you expected.

With over 30 years of experience, the Goff's team is committed to delivering the most reliable and innovative solutions to improve efficiency in your facility.

Goff's 3-Year Warranty

Goff's offers a warranty for the Clean Guard series from failure in normal use for a period of 3 years. This warranty includes all parts and labor as approved by Goff's tech support team to keep you up and running.

Fastest Industry Lead Times

With the industry's fastest lead times, you can have your complete Clean Guard Door System installed and active to provide maximum efficiency at your facility in no time. This will minimize downtime & maximize productivity.

Customer Care & Tech Support

The Goff's customer care & tech support team is available to answer any questions you have about your Clean Guard Door, making sure you not only get the most out of your investment, but ensure it runs smoothly for years to come.

Maximize your clean space:

Achieve maximum production capability at your facility by separating your wash down area using Goff's Clean Curtains. Our curtains allow you to keep separate lines up and running while others go through wash down cycles, keeping your operation up to code while producing at optimal capacity and minimize downtime during required wash down periods. Our clean curtains with stainless steel track and hardware prevent corrosion and control any airborne contaminants to achieve maximum quality standards at each production line.

