

HARSH ENVIRONMENTS

AVAILABLE UP TO 16' x 16'

Goff's Harsh Guard Doors

Our Goff's G2 Harsh Guard door is built to withstand the toughest environments. Built with moisture-resistant materials, and backed by our strong warranty, Harsh Guard is designed to stand the test of time and keep your harsh spaces up and running.

- **Travels at 28"/sec**, up to 120 cycles/hour
- **NEMA4X Intelligent Control System**
- **IP65 VFD Controlled Direct Drive Motor**
- **IP67 Photo Eye Safety Sensor**
- **Ideal Option for your Medium to High Traffic in Moisture or Chemical-Prone Areas.**



10' x 10' door pictured with black & vision panels

STANDARD FEATURES:

Full-Width Roll Cover

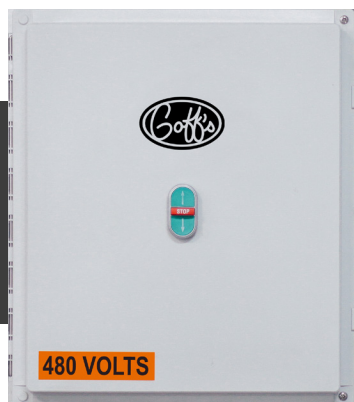
Auto-Reset After Impact

Full-Width Window

Auto-Close Door Timer

Replaceable Door Panels

Fiberglass Wind Bars



Goff's Intelligent Control System:

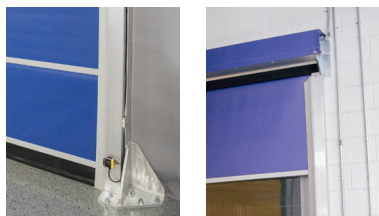
Motor operated via VFD motor controller to maximize efficiency & longevity of hardware.

Programmable logic controller interprets multiple sensor and switch inputs.

Ships assembled and **pre-wired in a NEMA4X enclosure** to simplify start-up.

Input Voltage Compatibility: 120V1P, 208V1P, 230V3P, 480V3P, 575V3P

Options & Accessories

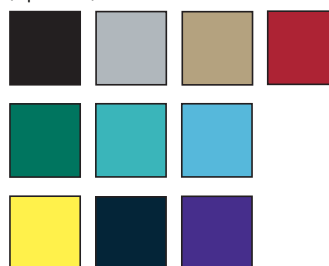


Available in Face Mount, Projection Mount, or freestanding via Goff's Door Support Frame.



Wide range of safety sensor and control method options available on request.

32oz Vinyl Colors: (optional)



18oz Vinyl Colors: (standard)

