



LOW-MED TRAFFIC

AVAILABLE UP TO 16' x 16'

## Goff's G2 1800 Doors

The G2 1800 door is great for low to medium traffic areas, operating at 12-18"/sec, based on door size. The low profile design allows for placement in tight spaces.

- **12-18"/sec** based on size, up to 24 cycles/hour
- **Features NEMA1 Push Button Station**
- **Reflective Photo Eye Safety Sensor**
- **Ideal for your Low to Medium Traffic Areas**

6' x 9' door pictured with blue and no vision panels.



### STANDARD FEATURES:

Full-Width Roll Cover

Auto-Reset After Impact

Full-Width Window

Auto-Close Door Timer

Replaceable Door Panels

Fiberglass Wind Bars



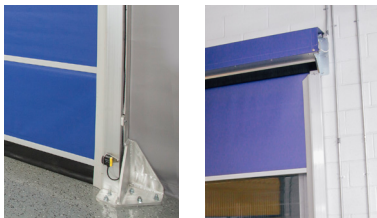
### Goff's TMC Control System:

In-Tube motor **operates at 12-18"/second**, controlled by our Timer Motor Control System.

**Timer Control System** sets auto-close feature, maintaining climate control & contaminant prevention.

**110 Volt Motor** operating at 24 cycles per hour.

### Options & Accessories

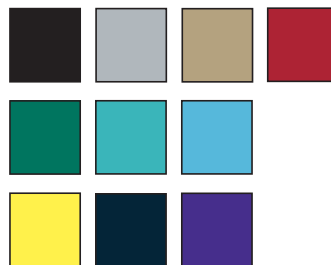


Available in Face Mount, Projection Mount, Under Header or Freestanding via Goff's Door Support Frame.



Wide range of safety sensor and control method options available on request.

#### 32oz Vinyl Colors: (optional)



#### 18oz Vinyl Colors: (standard)

