

Very high availability through redundancy with Hänel ESB



Hänel ESB

The intelligent safety package for enhanced availability
of the Hänel lifts

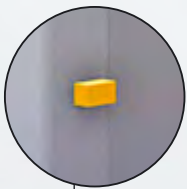
Hänel storage systems work reliably and failure-free. Should a malfunction arise, however, the Hänel redundancy systems kick in.

Lean-Lifts® can be fitted with a **second safety circuit**, for example. This means that if the safety

light barriers in the retrieval opening fail, it is still possible to continue operating the Lean-Lift® with the sliding door closed. The Hänel Lean-Lift® can also have the Hänel **ESB (Expanded Safety Bypass)** package integrated.

By activating the ESB system directly at the microprocessor controller, the user can continue to operate the Hänel Lean-Lift® in defined cases despite a malfunction. This redundancy system consists of seven integrated safety circuits.

It means that in the following cases the Hänel Lean-Lift® can continue to be operated safely and reliably until the Hänel service technician arrives.



If a limit switch in the upper or lower storage area fails



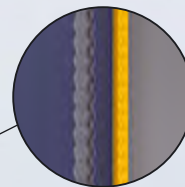
If a positioning sensor for the drive catch fails



If a sensor on the extractor fails



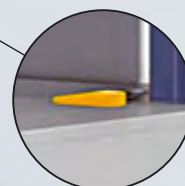
If a positioning system fails



If the height detection system fails



If the shelf memory is defective



If a sensor in the access point fails