

---

# OWNER'S MANUAL

---

## NAVY TROLLEY HOIST

MODEL NTH

1 Ton through 5 Ton Capacity

Code, Lot and Serial Number

### **⚠ WARNING**

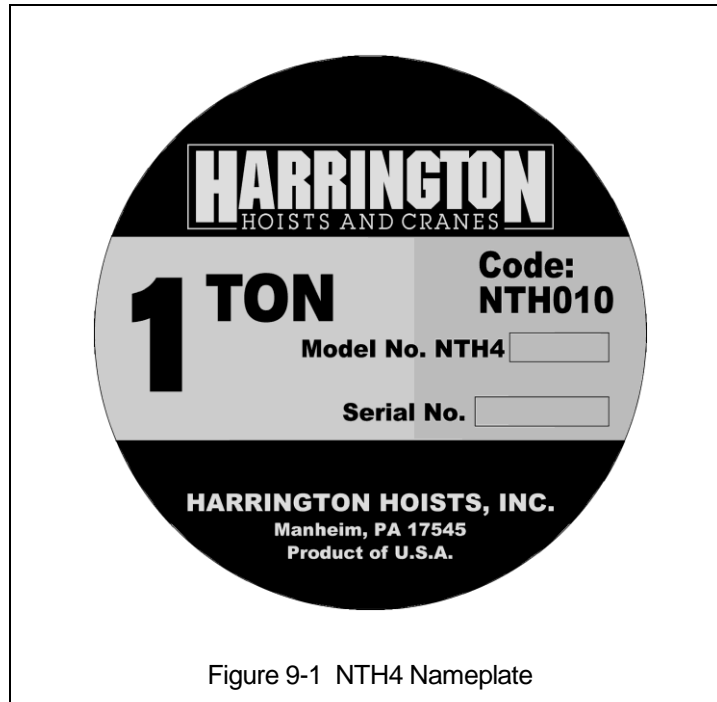
This equipment should not be installed, operated or maintained by any person who has not read and understood all the contents of this manual. Failure to read and comply with the contents of this manual can result in serious bodily injury or death, and/or property damage.

**HARRINGTON**  
A **KITO** GROUP COMPANY

## 9.0 Parts List

When ordering Parts, please provide the Hoist code number, lot number and serial number located on the Hoist nameplate (see Figure 9-1 below).

Reminder: Per Sections 1.1 and 3.4.4 to aid in ordering parts and product support, record the hoist Code, Lot and Serial Number in the space provided on the cover of this manual.



The parts list is arranged into the following sections:

<b>Section</b>	<b>Page</b>
9.1 1 to 5 Ton Parts.....	44
9.2 Additional 2 through 5 Ton Parts.....	46
9.3 Trolley Parts.....	47
9.4 Optional Hooks.....	49
9.5 Optional Chain Containers.....	50

### 9.1 1 to 5 Ton Parts

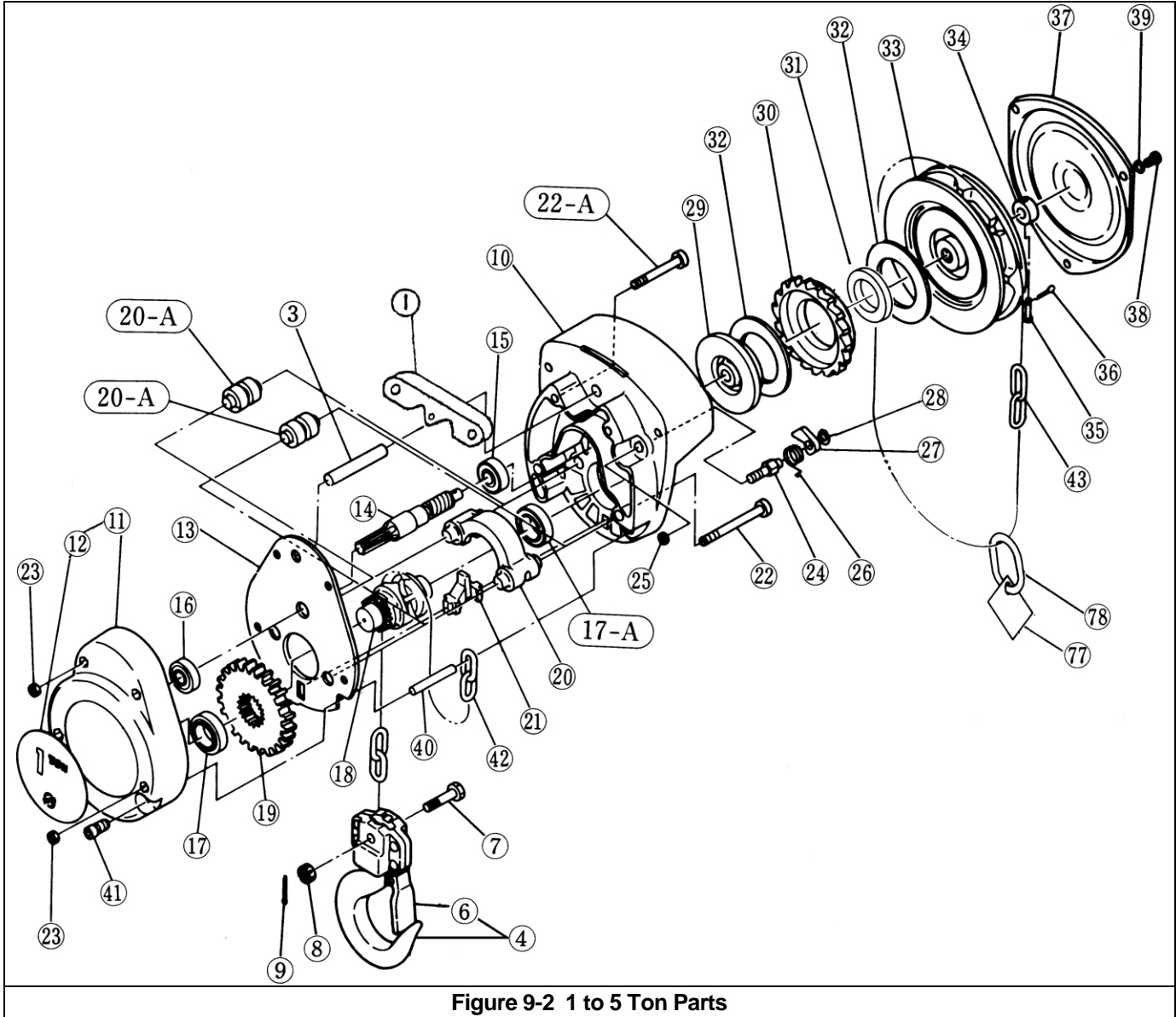


Figure 9-2 1 to 5 Ton Parts

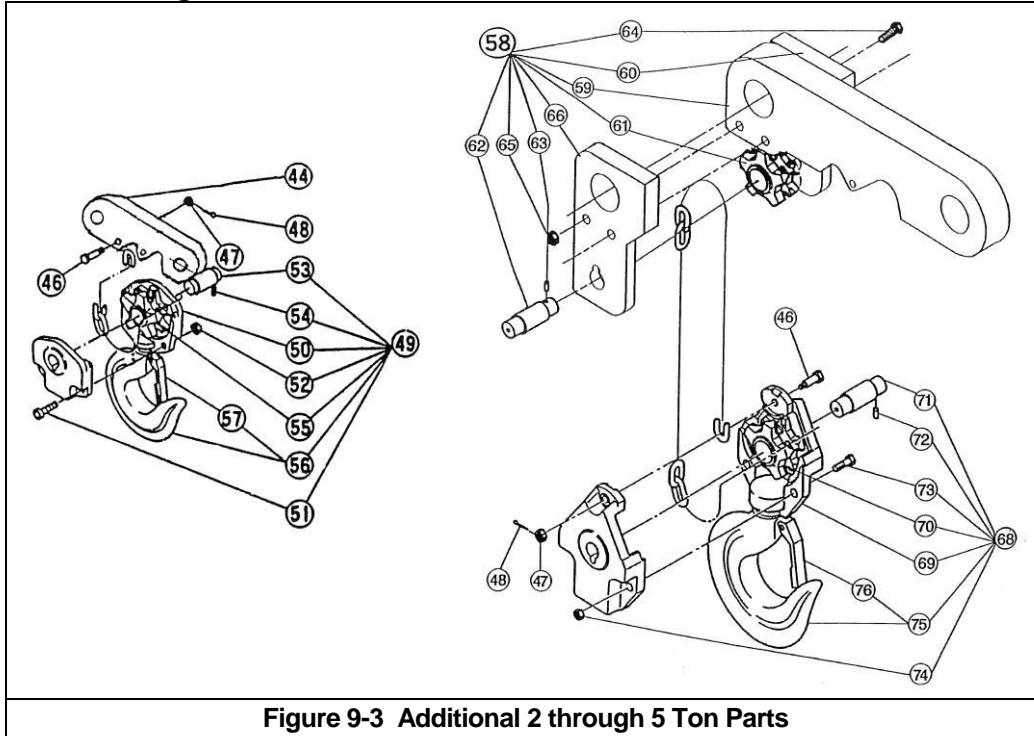
## 9.1 1 to 5 Ton Parts

Fig. No.	Name	Parts / Hoist	1Ton	2 Ton	3 Ton	5 Ton	
1	Suspender	1	50604	50622	50679	50725	
3	Top Pin	1	CF163010		CF163015		
4	Bottom Hook Complete Set	1	M3021A010				
6	Latch Assembly	1	CF071010				
7	Chain Pin	1	M3041010				
8	Slotted Nut	1	M2049010				
9	Split Pin	1	9009411				
10	Body A	1	CF101010		CF101015		
11	Body B	1	CF102010		CF102015		
12	Name Plate - Blank	without rivets	1	CF800010B	CF800020B	CF800030B	CF800050B
		with rivets	1	CF4800010	CF4800020	CF4800030	CF4800050
13	Frame	1	CF105010		CF105015		
14	Pinion	1	CF111010**		CF111015**	CF111050**	
			CF4111010*		CF4111015*	CF4111050*	
15	Ball Bearing A	1	9000103				
16	Ball Bearing B	1	9000201		9000202	9000300	
17	Ball Bearing C	1	9000105		9000106		
17A	Ball Bearing D	1	9000105		9000106		
18	Load Sheave	1	CF116010		CF116015	CF116A050	
19	Load Gear	1	CF114010		CF114015	CF116A050	
20	Chain Guide	1	CF178010		CF178015		
21	Stripper	1	CF162010		CF162015		
22	Socket Bolt for Body	2	9091284		9091285		
22A	Socket Bolt for Body	2	9091282		9091283		
23	U-Nut for Body	4	9098506				
24	Pawl Pin	1	CF156005				
25	U-Nut for Fig. 24	1	9098506				
26	Pawl Spring	1	CF158005				
27	Pawl	1	CF155005				
28	Snap Ring for Fig. 24	1	9047108				
29	Friction Disc	1	CF153010**				
			M3153020*				
30	Ratchet Disc	1	CF152010**				
			CF4152010*				
31	Bushing for Ratchet Disc	1	M3154020*				
32	Friction Plate	2	M3151020*				
		1	CF151010**				
32-A	Friction Plate	1	CF150010**				
33	Hand Wheel	1	CF115010**		CF115015**		
			CF4115010*		CF4115015*		
34	Wheel Stopper	1	CF159010				
35	Wheel Stopper Pin	1	M2167005				
36	Split Pin for Fig. 35	1	9009485				
37	Wheel Cover	1	CF171010		CF171015		
38	Screw for Fig. 37	3	CF187005				
39	Spring Washer for Fig. 37	3	9012709				
40	Tail Pin	1	CF164010		CF164015		
41	Socket Bolt for Fig. 40	1	CF181010				
42	Load Chain	ft.	LCCF010		LCCF015		
43	Hand Chain	ft.	HCCF005				
77	Warning Tag	1	WTAG9				
78	Chain Stopper Link	1	L4045030				

\*CF4 model only

\*\*Parts discontinued

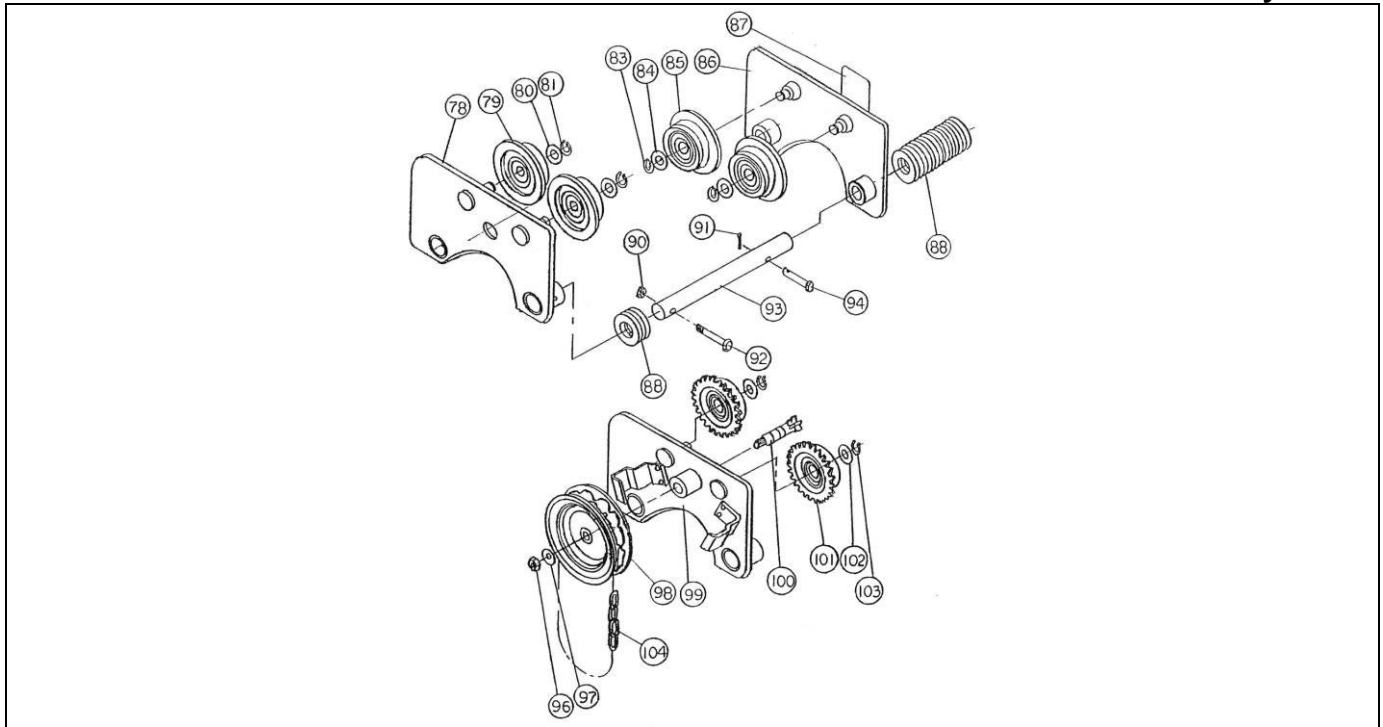
## 9.2 Additional 2 through 5 Ton Parts



**Figure 9-3 Additional 2 through 5 Ton Parts**

Fig. No.	Name	Parts / Hoist	2 Ton	3 Ton	5 Ton
44	Sponder	1	50622	50679	
46	Chain Pin	1	CF041020	M3041030	
47	Slotted Nut for Fig. 46	1	M2049010		
48	Split Pin for Fig. 46	1	9009411		
49	Bottom Hook Complete Set	1	CF021A020	M3021A030	
50	Bottom Yoke	2	CF031020	M3031030	
51	Bolt	2	9091274	9091296	
52	U-Nut	2	9098506	9098508	
53	Shaft	1	CF053020	CF053030	
54	Spring Pin	1	CF083020		
55	Idle Sheave	1	CF051020	CF051030	
56	Bottom Hook Assembly	1	CF021020	M3021030	
57	Latch Assembly	1	CF071020	CF071030	
58	Sponder Assembly	1			50727
59	Sponder	1			50725
60	Idle Sheave Bracket L.H.	1			5072601
61	Idle Sheave	1			CF051030
62	Shaft	1			CF053050
63	Spring Pin	1			CF083020
64	Bolt	2			9093153
65	Lock Nut	2			9098511
66	Idle Sheave Bracket R.H.	1			5072602
68	Bottom Hook Complete Set	1			CF021A050
69	Bottom Yoke Assembly	1			CF031050
70	Idle Sheave	1			CF051030
71	Shaft	1			CF053030
72	Spring Pin	1			CF083020
73	Socket Bolt	2			9091296
74	U-Nut	2			9098508
75	Bottom Hook Assembly	1			M3021050
76	Latch Assembly	1			CF071050

### 9.3 Trolley Parts



**Figure 9-3 Trolley Parts**

#### Push Trolley Parts

Fig. No.	Name	Parts / Hoist	1Ton	2 Ton	3 Ton	5 Ton
78	Side Plate A	1	50600	50619	50685	50722
79	Track Wheel S Assembly	2	T3P1102010	T3P1102020	T3P1102030	T3P1102050
80	Washer	4	MS104010	MS104020	MS104030	MS104050
81	Snap Ring	2	9047115	9047120	9047125	9047135
83	Snap Ring	2	9047115	9047120	9047125	9047135
84	Washer	4	MS104010	MS104020	MS104030	MS104050
85	Track Wheel S Assembly	2	T3P1102010	T3P1102020	T3P1102030	T3P1102050
86	Side Plate B	1	50601	50620	50676	50723
87	Nameplate	1	NTH800010	NTH800020	NTH800030	NTH800050
88	Adjusting Spacer	36	9005212	T3P116010	9005215	
		34				50736
90	Lock Nut	2	9098506	9098508		
91	Split Pin	2	9009417-5	9009413		9009433
92	Bolt	2	9093102	9093126	9093127	9093129
93	Suspension Shaft	2	See Suspension Shaft Sizing Chart			
94	Shaft Stopper Pin	2	T3P156010	T6G156020	MS164020	MS164030

#### Geared Trolley Parts

Fig. No.	Name	Parts / Hoist	1Ton	2 Ton	3 Ton	5 Ton
96	Slotted Nut	1	T3G259010			
97	Washer	1	9012515			
98	Hand Wheel	1	T6G123010			
99	Side Plate G	1	50600G	50619G	50675	50721
100	Pinion	1	T3G121020			
101	Track Wheel G Assembly	2	T3G1101010	T3G1101020	T3G1101030	T3G1101050
102	Washer	4	MS104010	MS104020	MS104030	MS104050
103	Snap Ring	4	T3P106010	T3P106020	T3P106030	T3P106050
104	Hand Chain	ft.	HCCF005			

### 9.3 Trolley Parts

#### Suspension Shaft Sizing Chart

Fig. No.	Parts / Hoist	1Ton		2 Ton		3 Ton		5 Ton	
		Flange Range (inches)	Part #	Flange Range (inches)	Part #	Flange Range (inches)	Part #	Flange Range (inches)	Part #
93	2	2.32 to 5.16	5060501	3.72 to 5.97	5062401	3.62 to 6.26	5068001	5.12 to 7.11	5072901
		5.17 to 7.16	5060502	5.98 to 7.97	5062402	6.27 to 8.26	5068002	7.12 to 9.11	5072902
		7.17 to 9.16	5060503	7.98 to 9.97	5062403	8.27 to 10.26	5068003	9.12 to 11.11	5072903
		9.17 to 11.16	5060504	9.98 to 11.97	5062404	10.27 to 12.26	5068004	11.12 to 13.11	5072904
		11.17 to 13.16	5060505	11.98 to 13.97	5062405	12.27 to 14.26	5068005	13.12 to 15.11	5072905
		13.17 to 15.16	5060506	13.98 to 15.97	5062406	14.27 to 16.26	5068006	15.12 to 17.11	5072906

#### **⚠ WARNING**

Flange range shall not be changed in the field by purchasing the parts listed on this page; these parts are only for one-for-one replacement of the same part. Additional factory modifications to the trolley are required to increase or decrease the flange range of an existing trolley. Failure to comply may result in failure of the hoist suspension, dropped load, and severe injury or death.  
Please contact customer service for more information.

## 9.4 Optional Hooks

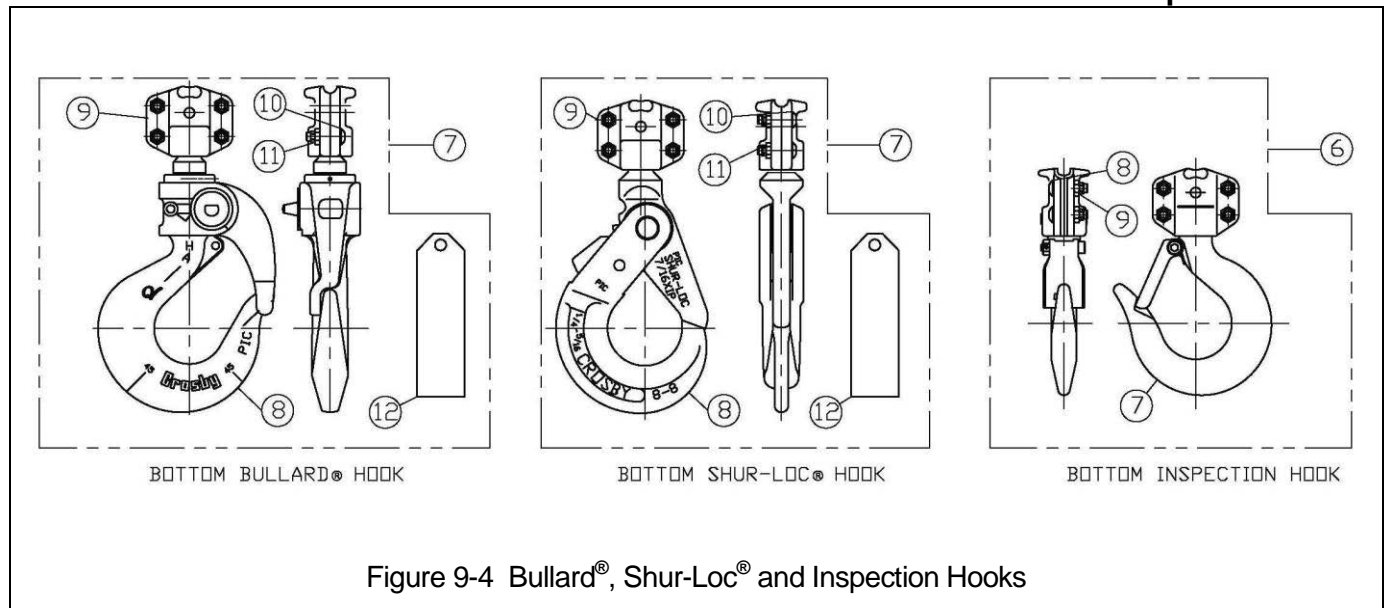


Figure 9-4 Bullard®, Shur-Loc® and Inspection Hooks

### Bullard® Hooks

Fig. No.	Name	Parts Per Hoist	1 Ton	2 Ton	3 Ton	5 Ton
7	Bullard® Bottom Hook Complete Set	1	6027802	6027805	6027807	6027808
8	Bullard® Hook Assembly	1	60162	60165	60168	60169
9	Bottom Yoke Kit	1	BYKITCB010			
10	Button Head Screw	4	9012601			
11	Flexloc® Nut	4	9012603			
12	Warning Tag*	1	WTAG6*			

\*Hoist with Bullard® Hook(s) must have WTAG6 and WTAG9 installed. (See page 6 for WTAG9).

### Shur-Loc® Hooks

Fig. No.	Name	Parts Per Hoist	1 Ton	2 Ton	3 Ton	5 Ton
7	Shur-Loc® Bottom Hook Complete Set	1	6030102	6030105	6030107	
8	Shur-Loc® Hook Assembly	1	60142	60145	60148	
9	Bottom Yoke Kit	1	BYKITCB010			
10	Button Head Screw	4	9012601			
11	Flexloc® Nut	4	9012603			
12	Warning Tag	1	WTAG6*			

\*Hoist with Shur-Loc® Hook(s) must have WTAG6 and WTAG9 installed. (See page 6 for WTAG9).

### Inspection Hooks

Fig. No.	Name	Parts Per Hoist	1 Ton	2 Ton	3 Ton	5 Ton
6	Bottom Hook Complete Set	1	M3021A010IK			
7	Hook W/Latch & Yoke	1	M3021A010IH			
8	Button Head Screw	2	9012601			
9	Flexloc® Nut	2	9012603			



## 9.5 Optional Chain Containers

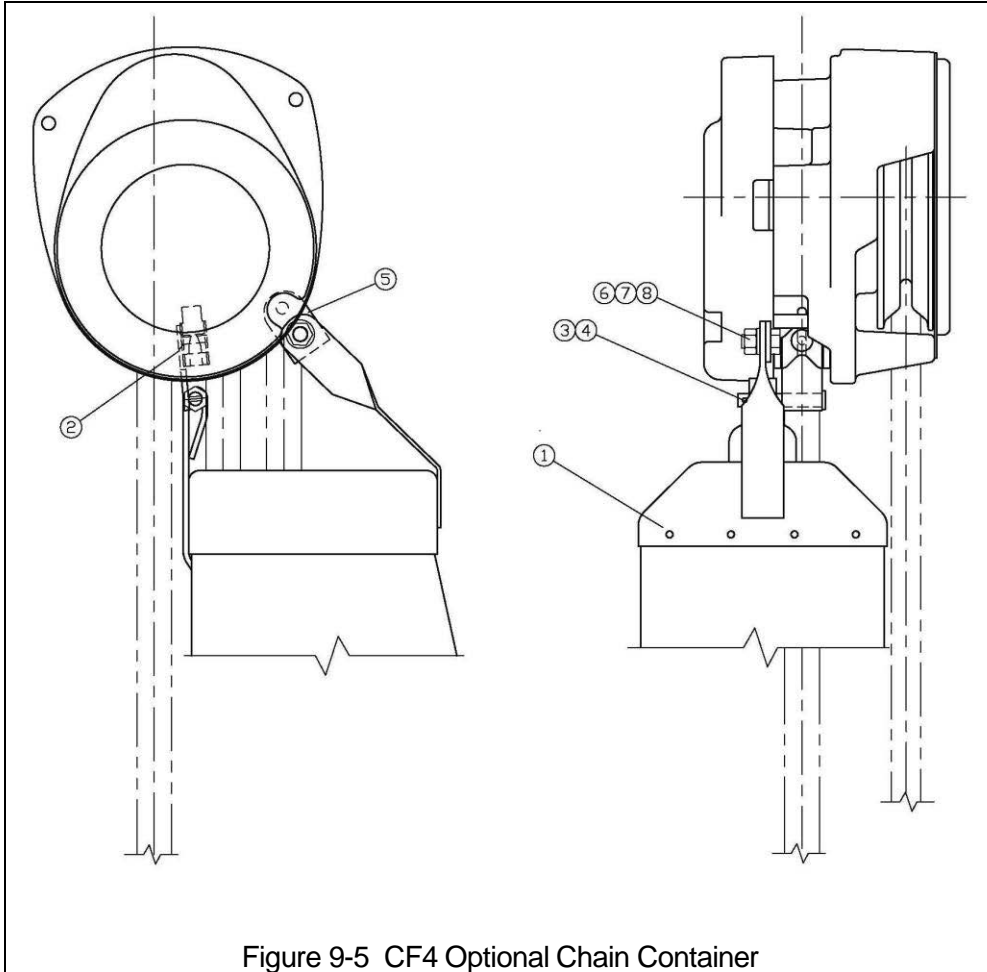


Figure 9-5 CF4 Optional Chain Container

### NTH OPTIONAL "05" & "10" CHAIN CONTAINERS

Fig. No.	Name	Parts Per Hoist	1 Ton	2 Ton	3 Ton	5 Ton
	"05" Chain Container (BKC1) Assembly	1	60713	60713	60715	
1	Chain Container	1	50810	50810	50810	
2	Modified Stripper Ass'y	1	5076004	5076004	5080404	
3	Split Pin	1	9009412	9009412	9009412	
4	Washer, 1/4	1	9005205	9005205	9005205	
5	Link	1	5076005	5076005	5076005	
6	Washer, M8	2	9012513	9012513	9012513	
7	Hex Head Bolt	1	9093328	9093328	9093328	
8	Lock-Nut	1	9098506	9098506	9098506	
	"10" Chain Container (BKD1) Assembly	1	60714	60714	60716	
1	Chain Container	1	5080403	5080403	5080403	
2	Modified Stripper Ass'y	1	5076004	5076004	5080404	
3	Split Pin	1	9009412	9009412	9009412	
4	Washer, 1/4	1	9005205	9005205	9005205	
5	Link	1	5076005	5076005	5076005	
6	Washer, M8	2	9012513	9012513	9012513	
7	Hex Head Bolt	1	9093328	9093328	9093328	
8	Lock-Nut	1	9098506	9098506	9098506	

## 9.5 Optional Chain Containers

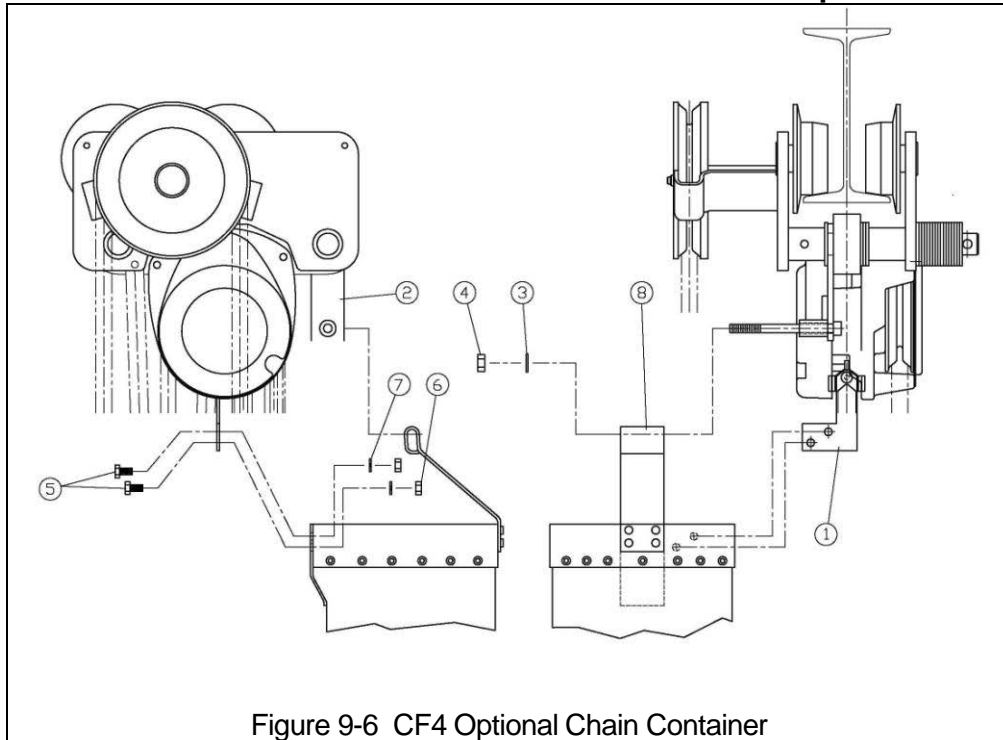


Figure 9-6 CF4 Optional Chain Container

### NTH OPTIONAL "15" CHAIN CONTAINERS

Fig. No.	Name	Parts Per Hoist	1 Ton	2 Ton	3 Ton	5 Ton
	"15" Chain Container (BKC1) Assembly	1	60717	60718	60719	60720
1	Modified Stripper Ass'y	1	5087605	5087605	*	6007702
2	Suspension Bracket	1	5087606	5087608	*	6007704
3	Flat Washer	1	9012514	9012514	9012514	9012514
4	Lock Nut	1	9098508	9098508	9098508	9098508
5	Bolt	2	9093327	9093327	9093327	9093327
6	Lock Nut	2	9098506	9098506	9098506	9098506
7	Lock Washer	2	9012711	9012711	9012711	9012711
8	Chain Container	1	5087601	5087601	5087601	5087601

\*Available on request

## NOTES

## NOTES

## **NOTES**

## NOTES



Harrington Hoists, Inc.  
401 West End Avenue  
Manheim, PA 17545

[www.harringtonhoists.com](http://www.harringtonhoists.com)

Toll Free: 800-233-3010  
Phone: 717-665-2000  
Fax: 717-665-2861

**NTHOM-ENG**