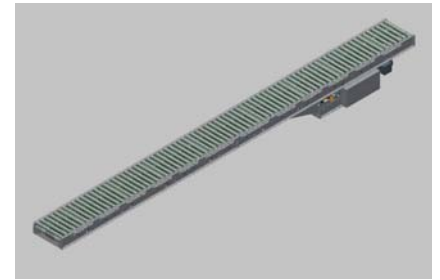


190-ACZ

Minimum-Pressure Roller Conveyor

The model 190-ACZ accumulates cartons, boxes, etc. Basic design eliminates complicated adjustments and allows a minimum of 2 percent back-pressure.

- 2 Percent Minimum Back-Pressure
- Finger Tip Snub Roller Adjustment, Both Sides
- Reversible
- Center Drive
- Adjustable MS-Type Floor Supports Available



Conveyor shown in Standard Gray.

Size To Order	Between Rail Width	15"	21"	27"	33"	39"
Overall Length "A"	Drive Belt Width		6"		8"	
	Overall Frame Width	18"	24"	30"	36"	42"
10'		416	509	612	720	803
15'		552	679	816	950	1077
20'		688	849	1020	1190	1351
25'		824	1019	1224	1430	1625
30'		960	1189	1428	1670	1899
35'		1096	1359	1632	1910	2173
40'		1232	1529	1836	2150	2447
45'	Weights (lbs.) Based on 3" Roller Centers	1368	1699	2040	2390	2721
50'		1504	1869	2244	2630	2995
55'		1640	2039	2448	2870	3269
60'		1776	2209	2652	3010	3543
65'		1912	2379	2856	3350	3817
70'		2048	2549	3060	3590	4091
75'		2184	2719	3264	3830	4365
80'		2320	2889	3468	4070	4639
85'		2456	3059	3672	4310	4913
90'		2592	3229	3876	4550	5187
95'		2728	3399	4080	4790	5461
100'		2864	3569	4284	5030	5735

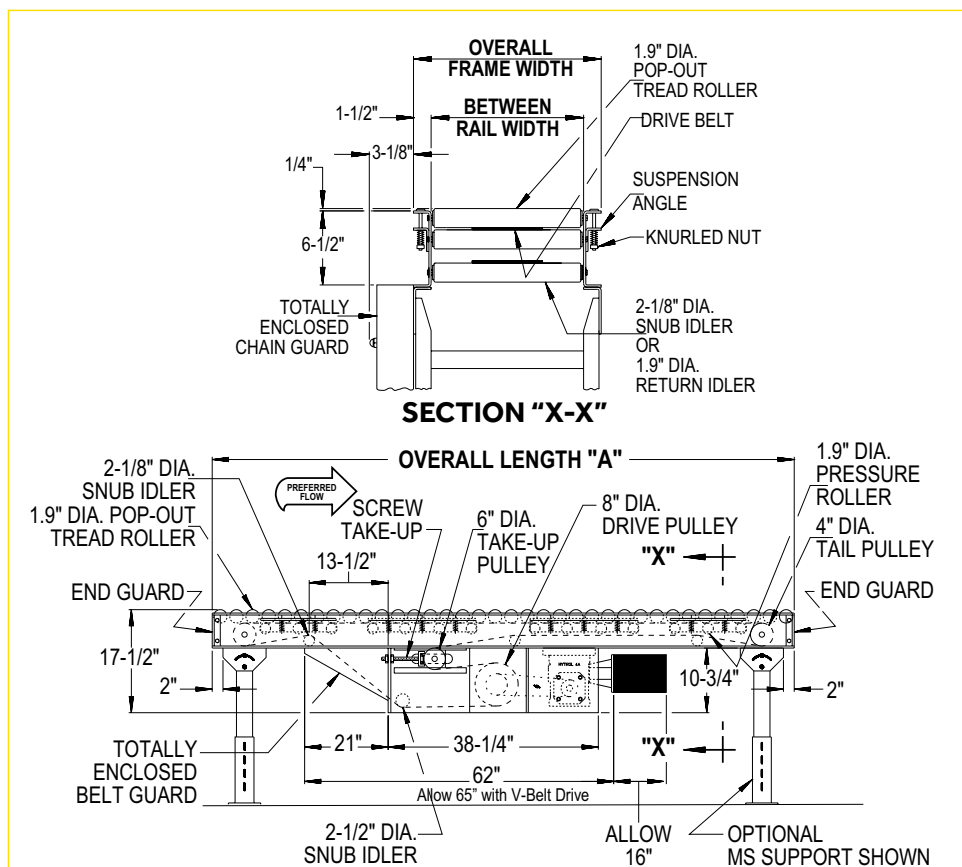
All weights in catalog are conveyor weights only. Accessories, crating, etc., are not included.



190-ACZ

Load Capacity Chart @ 65 FPM						
HP	Over Frame Width 18"		Over Frame Width 24" to 30"		Over Frame Width 36" to 42"	
	Total Load (lbs.)		Total Load (lbs.)		Total Load (lbs.)	
	Up to 50'	Up to 100'	Up to 50'	Up to 100'	Up to 50'	Up to 100'
1/2	1100	200	600	—	—	—
1	3300	2400	2800	1600	2200	—
2	7000	6000	6400	5200	5800	3300

190-ACZ



Standard Specifications

BELT – Ultimate 140 BBS, Nitrile.

BED – Roller bed with 1.9 in. dia. roller x 16 ga. galvanized tube spaced every 3 in. and 1.9 in. dia. pressure roller x 16 ga. galvanized tube spaced every 6 in. Mounted in 6 1/2 in. x 12 ga. powder-painted formed steel channel frame, bolted together with butt couplings.

CROSS BRACING – Rods with turnbuckles are fastened to underside of bed to provide proper alignment of bed rollers and ensure correct product tracking. Supplied to section adjoining drive and every other section 20 ft. bed lengths and over. Supplied on bed lengths 9 ft. and over.

CENTER DRIVE – Can be placed in any section of conveyor length.

DRIVE PULLEY – 8 in. dia. with 1 7/16 in. dia. shaft at bearings, fully lagged.

TAIL PULLEY – 4 in. dia. with 1 in. dia. shaft at bearings; machine crowned.

SNUB IDLER – Adjustable 2 1/8 in dia. pre-lubricated ball bearings.

RETURN IDLER – Adjustable 1.9 in dia. pre-lubricated ball bearings.

TAKE-UP – Take-ups in tailer drive. Provides 16 in. of belt take-up.

BEARINGS – Sealed, pre-lubricated, self-aligning ball bearings on drive, tail, and take-up pulleys. Pre-lubricated ball bearings in tread and pressure rollers.

SPEED REDUCTION – Sealed worm C-face gear reducer. No. 50 roller chain to drive sheave.

MOTOR – 1/2 HP, 208/230/460/575V, 3 Ph. 60 Hz. Totally Enclosed C-face.

CONVEYING SPEED – Constant 65 FPM.

CAPACITY – Maximum load per linear foot of conveyor: 150 lbs. NOT TO EXCEED capacity in chart.

FLOOR SUPPORTS – Supplied as optional equipment.

Optional Equipment

FLOOR SUPPORTS – MS Type floor supports are available with a wide range of adjustment. Specify top of belt or roller elevation. One support required at every bed joint and ends of conveyor. Holes in feet for lagging to floor. Knee braces recommended above MS-6 support.

CONVEYING SPEED – Other constant and variable speeds from 20 to 90 FPM. V-belt drive supplied under 46 FPM (2 HP) and with variable speeds. Note: Capacity and accumulation feature affected with speed change.

SIDE MOUNTED LOW ELEVATION CENTER DRIVE
– Motor reducer unit mounted to side of conveyor. Minimum low elevation: 16 in.

SIDE MOUNTED END DRIVE – Minimum elevation 12 1/4 in. (underside take-up required).

V-BELT DRIVE – V-belt supplied between motor and reducer. Allow 65 in.

O-RING DRIVE CHAIN – With sealed-in lubricant (recommended for applications that do not permit regular lubrication).

PACKAGE STOP – Roller- or pin-type stops available. Contact factory.

GUARD RAILS – Adjustable Universal Channel Guard Rail, fixed channel, type A angle elevated to allow for pop-out tread rollers. Type B angle not available. See Accessory section. Note: If product comes in contact with guard rails, product flow will be affected. Fixed channel overlapping, one direction. Fixed channel non-overlapping, reversing.

ROLLER CENTERS – Tread rollers spaced every 4 in., 6 in., or 8 in. (4 in. or 8 in. centers NOT AVAILABLE in 7 ft. 6 in. bed).

POLY-TIER SUPPORTS – 36 in. to 120 in. support heights in 6 in. increments. Knee braces supplied.

CEILING HANGER – 5/8 in. dia. x 8 ft. long unplated rods fully threaded. Other lengths and galvanized rods available.

MOTOR – Energy efficient, single phase brakemotor, and other characteristics. 2 HP maximum.

ELECTRICAL CONTROLS – Non-reversing or reversible magnetic starters and push-button stations. AC variable frequency drive.