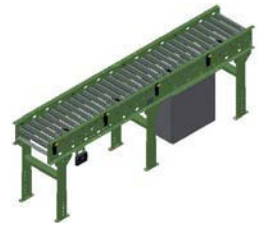


E24EZN

The model E24EZN Accumulating Conveyor uses a series of 24VDC motors to drive the tread rollers, eliminating the need for drive belts, chains, or line shafts. Quiet operation, zero-pressure accumulation, and ease of maintenance and installation are just some of the advantages.

- EZLogic® NET Accumulation System
- All-Electric Operation
- Adjustable MS-Type Floor Supports Available



Conveyor shown in green with optional supports
Standard color options:



Section Length	Between Rail Width	15"	21"	27"	33"	39"
	Overall Frame Width	18"	24"	30"	36"	42"
10' 0"	Weights (lbs.)	365	405	445	485	525
Per Foot	Weights (lbs.)	24	28	32	36	41

Note: Bed Sections available in the following multiples:

12" Zones

2', 3', 5', 6', 7', 8', and 9'

18" Zones

3', 4 1/2', 6', 7 1/2', and 9'

24" Zones

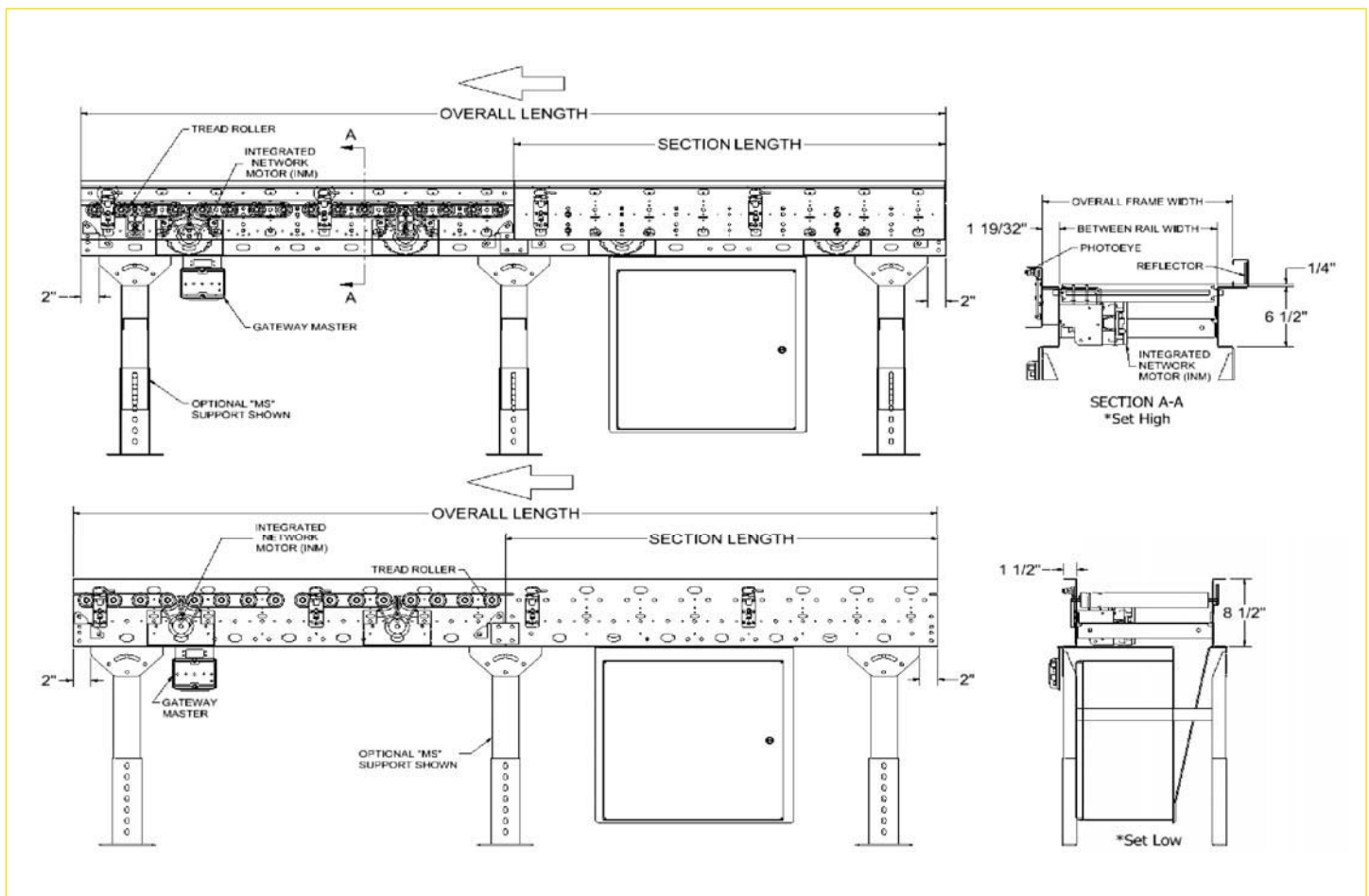
2', 4', 6', 8', and 10'

30" Zones

2 1/2', 5', 7 1/2', and 10'

36" Zones

3', 6', and 9'





E24EZNCT

E24EZNCT (CURVE CONVEYOR)

- EZLogic® NET Accumulation System
- All-Electric Operation
- Adjustable MS-Type Floor Supports Available
- True Tapered Rollers



Between Rail Width	Overall Frame Width	"R"	Number of Rollers	90° and 60° Weights (lbs.)	45° and 30° Weights (lbs.)
15"	18"			220	121
21"	24"	32 1/2"	20	313	172
27"	30"			405	223
33"	36"	48"	30	498	274
39"	42"			590	325

All weights in catalog are conveyor weights only. Accessories, crating, etc., are not included.

