

190-NSPEZ

Accumulating Live Roller Conveyor

The model 190-NSPEZ is a horizontal lineshaft driven conveyor, designed for zero-pressure accumulation of product. Each zone features positive braking of each roller in the zone during accumulation. Product may be released in singulation or slug fashion.

- EZLogic® Accumulation System
- Singulation, Slug or Cascaded Slug Operation
- Dynamic Zone Allocation
- Positive Brake on All Rollers
- Adjustable MS-Type Floor Supports Available



Conveyor shown in green with optional supports
Standard color options:



SIZE TO ORDER Overall Length "A"	Between Rail Width	15"	21"	27"	33"	39"
		Overall Frame Width 18"	24"	30"	36"	42"
6'	Weights (lbs.) Based on 3" Roller Centers	286	329	370	409	449
10'		419	486	549	611	674
16'		618	722	819	914	1011
20'		751	879	998	1116	1236
26'		950	1115	1268	1419	1573
30'		1083	1272	1447	1621	1798
36'		1282	1508	1717	1924	2135
40'		1415	1665	1896	2126	2360
46'		1614	1901	2166	2429	2697
50'		1747	2058	2345	2631	2922
56'		1946	2294	2615	2934	3259
60'		2079	2451	2794	3136	3484
66'		2278	2687	3064	3439	3821
70'		2411	2844	3243	3641	4046
76'		2610	3080	3512	3944	4383
80'		2743	3237	3692	4146	4608
86'		2942	3473	3961	4449	4945
90'		3075	3630	4141	4651	5170

All weights in catalog are conveyor weights only. Accessories, crating, etc., are not included.

Note: Bed sections available in the following multiples:

12" Zones 2', 3', 4', 5', 6', 7', 8', 9', and 10'

18" Zones 3', 4 1/2', 6', 7 1/2', and 9'

30" Zones 2 1/2', 5', 7 1/2', and 10'

24" Zones* 2', 4', 6', 8', and 10'

36" Zones 3', 6', and 9'

*Overall lengths in chart are for 24" zones.

Overall length must be divisible by zone length

190-NSPEZ

HP/Load Capacity Chart @ 65 FPM

Conveyor Length Overall	3" Centers	
	HP	Total Load (lbs.)*
10'	1/2	600
20'		1200
30'		1800
40'	1	2400
50'		3000
60'		3600
70'	2	4200
80'		4800
90'		5400

*Total load based on 15 lbs. per driven roller

Motor Selection Chart

FPM	30-44	45-90
HP (Max)	1	2

If the required horsepower exceeds the maximum horsepower shown in the chart, more than one drive is required

Optional Equipment

FLOOR SUPPORTS – MS Type floor supports are available with a wide range of adjustment. Specify top of belt or roller elevation. One support required at every bed joint and ends of conveyor. Holes in feet for lagging to floor. Knee braces recommended above MS-6 support.

CONVEYING SPEED – Other constant and variable speeds from 30 to 120 FPM. Note: HP and conveyor length affected by speed change.

SIDE MOUNTED DRIVE – With Hytrol reducer.

SIDE MOUNTED DRIVE – With gearmotor.

O-RING DRIVE CHAIN – With sealed-in lubricant (recommended for applications that do not permit regular lubrication).

LOW ELEVATION DRIVE – Gearmotor mounted inside of conveyor. Minimum elevation: 11 1/4 in. (retro) or 13 1/4 in. (diffuse).

ONE DIRECTION O-RING TRANSFER – See Accessory section.

REVERSING O-RING TRANSFER – See Accessory section.

PRESSURE SWITCH – Installed in air line after regulator unit. Kills conveyor drive when air pressure drops below minimum working requirements. Requires restart controller (not supplied).

GUARD RAILS – Adjustable Universal Channel Guard Rail. Note: If product comes in contact with guard rails, product flow will be affected. Fixed channel overlapping-one direction.

POLY-TIER SUPPORTS – 36 in. to 120 in. support heights in 6 in. increments. Knee braces required.

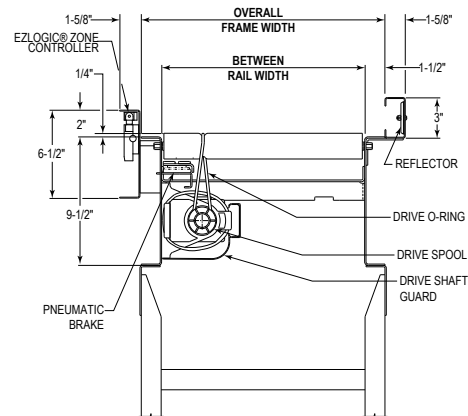
CEILING HANGER – 5/8 in. dia. x 8 ft. long unplated steel rods fully threaded. Other lengths and galvanized rods available.

MOTOR – Energy efficient, single phase, and other characteristics. 2 HP maximum.

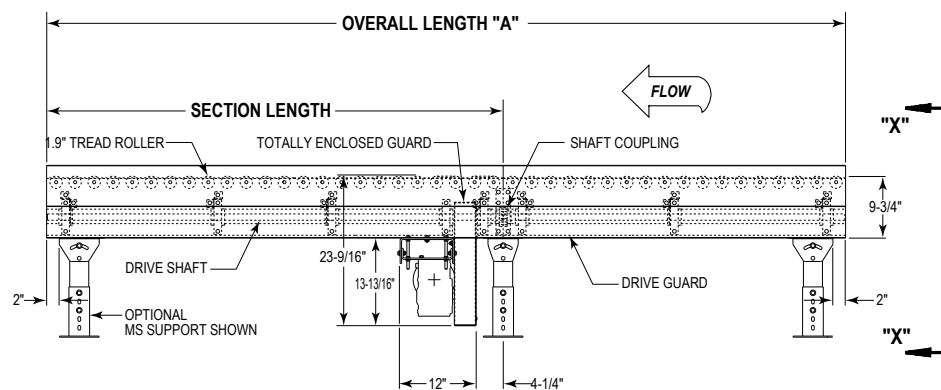
ELECTRICAL MOTOR CONTROLS – Non-reversing magnetic starters and push-button stations. AC variable frequency drive.

EZLOGIC® – See EZLogic® Components Page.

190-NSPEZ



SECTION "X-X"



190-NSPEZ

Standard Specifications

BED – Roller bed with 1.9 in. dia. roller x 16 ga. galvanized tube spaced every 3 in. Mounted in 9 1/2 in. x 12 ga. powder-painted formed steel channel frame bolted together with splice plates.

CROSS BRACING – Rods with turnbuckles are fastened to underside of bed to provide proper alignment of bed rollers and ensure tracking. One supplied in first 50 ft. of bed section lengths and one per 50 ft. of bed section length thereafter. Supplied in approximate center of lengths.

DRIVE – Mounted underneath, placed near center of conveyor. Note: On conveyors less than 26 in. OAW, motor extends beyond frame. Chain guard located on left hand side.

DRIVE SHAFT – 1 in. dia. steel shaft extends full length of conveyor. Chain coupling at bed joints. Located on left hand side.

DRIVE SPOOLS – 2 in. dia. Delrin spool held in place on drive shaft with spool spacers.

DRIVE GUARD – Underside of drive shaft with spools and drive o-rings guarded full length of conveyor.

DRIVE O-RING – 3/16 in. dia. polyurethane o-ring from drive spool to tread rollers.

BEARINGS – Sealed, pre-lubricated, self-aligning ball bearings with eccentric lock collar on drive shaft. Pre-lubricated ball bearings in tread rollers.

ACCUMULATION ZONES – 12, 18, 24, 30, and 36 in. long air controlled. Section lengths change with zone lengths. See note on previous page. Note: 51 or more zones will require an additional IOP, isolation cable, and power supply T cable.

EZLOGIC® ZONE CONTROLLER – Located in each zone (retro-reflective). NEMA1, 2, IP 62. UL Approved.

IOP – Provides 27VDC, 100 watt power for EZLogic® accumulation system; contains slots for 4 input/output boards. Operates up to 50 zones (25 each side of IOP). Requires 120VAC or 230VAC single phase input.

AIR REQUIREMENTS – Recommended working pressure 35 PSI. Free air consumption at 35 PSI; .002 cu. ft. per sensor actuation.

FILTER/REGULATOR – Supplied for main air supply line 3/8 in. NPT port.

SPEED REDUCTION – Sealed worm gear C-face speed reducer. No. 50 roller chain to drive shaft.

MOTOR – 1/2 HP, 208/230/460/575V, 3 Ph. 60 Hz. Totally enclosed C-face.

CONVEYING SPEED – Constant 65 FPM.

CAPACITY – Maximum load 15 lbs. per drive roller.

FLOOR SUPPORTS – Supplied as optional equipment.