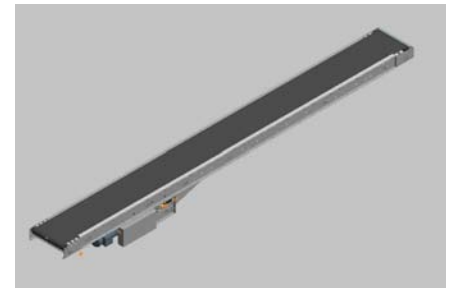


25-RBM

Belt-Over Roller Conveyor

The model 25-RBM is designed for merge applications. Roller bed design reduces belt friction and provides greater capacity.

- Reversible
- Moves Heavier Loads
- Center Drive
- System Ends
- Pop-Out Roller
- Adjustable MHS Type Floor Supports Available



Conveyor shown in Standard Gray.

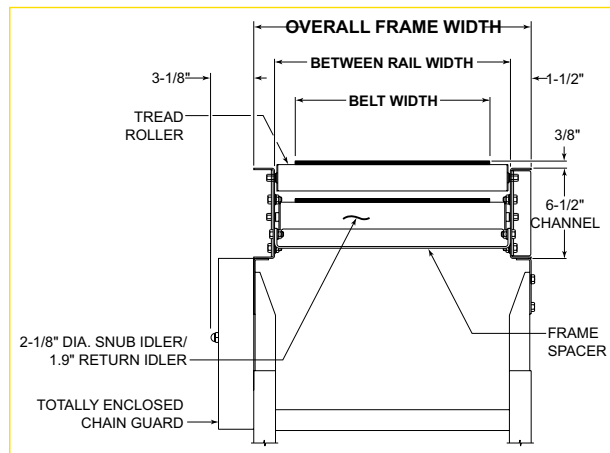
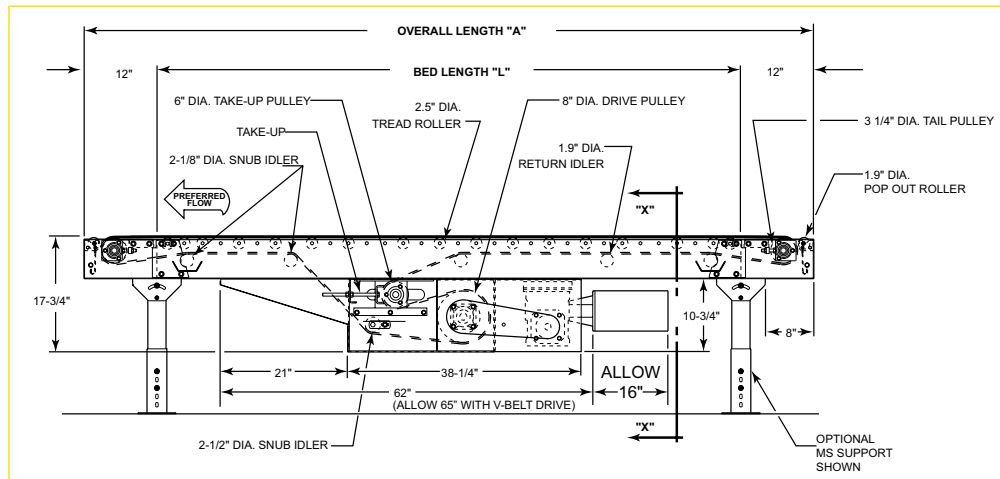
OTHER STANDARD COLORS

	OAW	24	30	36	42	48
OAL 12'	3" R/C	837	977	1117	1257	1396
	6" R/C	837	977	1117	1257	1396

All weights in catalog are conveyor weights only. Accessories, crating, etc., are not included.

8" Dia. Drive Pulley Horizontal Live Load Capacity @ 65 FPM				
HP	Belt Widths To	Lengths Up To		Distributed Load (lbs.)
		52'	102'	
1	18"	5500	5160	
	24"	5290	4810	
	36"	4870	4180	
	42"	4530	3630	
2	18"	11520	11170	
	24"	11320	10830	
	36"	10890	10200	
	42"	10550	9650	

25-RBM



25-RBM

Standard Specifications

BELT – Green 2-ply PVC cover with clipper lacing.

BED – Roller bed with 2.5 in. dia. roller x 11 ga. unplated tube spaced every 3 in. Mounted in 6 1/2 in. x 12 ga. powder-painted formed steel channel frame bolted together with splice plates.

CROSS BRACING – Rods with turnbuckles are fastened to underside of bed to provide proper alignment of bed rollers and ensure tracking. One supplied in first 50 ft. of bed section lengths and one per 50 ft. of bed section length thereafter. Supplied in approximate center of lengths.

CENTER DRIVE – Minimum elevation is 17 3/4 in. Can be placed on any section of conveyor length. Minimum OAL without modification 120 in.

DRIVE PULLEY – 8 in. dia. with 1 7/16 in. dia. shaft at bearings, fully lagged.

TAIL PULLEY – 3 1/4 in. dia. with 1 in. dia. shaft at bearings.

SNUB IDLER – Adjustable 2 1/8 in. dia. pre-lubricated ball bearings. Guards included.

RETURN IDLER – Adjustable 1.9 in. dia. pre-lubricated ball bearings.

TAKE-UP – Take-ups in center drive provides 16 in. of belt take-up.

BEARINGS – Sealed, pre-lubricated, self-aligning ball bearings on drive and tail pulleys. Pre-lubricated ball bearings in tread rollers.

SPEED REDUCTION – Sealed worm gear C-face speed reducer. No. 50 roller chain to drive pulley.

MOTOR – 1 HP, 208/230/460/575V, 3 Ph. 60 Hz. Totally enclosed C-face.

BELT SPEED – Constant 65 FPM.

CAPACITY – Maximum load per linear foot of conveyor 225 lbs. NOT TO EXCEED capacity in charts.

FLOOR SUPPORTS – Supplied as optional equipment.

Optional Equipment

FLOOR SUPPORTS – MHS Type floor supports are available with a wide range of adjustment. Specify top of belt or roller elevation. One support required at every bed joint and ends of conveyor. Holes in feet for lagging to floor.

BELT* – Black ultimate 140 BBS, White Polymate 100 RMP-COS (cover one side), Black Trackmate 533 COS-PVC, Tan Glidetop.

BELT SPEED* – Other constant and variable speeds. V-belt drive supplied on speeds under 17 FPM.

SHAFT-MOUNTED CENTER DRIVE

V-BELT DRIVE – V-belt supplied between motor and reducer. Allow 65 in.

O-RING DRIVE CHAIN – With sealed-in lubricant (recommended for applications that do not permit regular lubrication).

GUARD RAILS – Adjustable Universal Channel Guard Rail, fixed channel, type A and B angle. Fixed Channel overlapping, one direction. Fixed Channel nonoverlapping, reversing. See Accessory section.

ROLLER CENTERS* – Tread rollers spaced on 6 in. centers.

PULLEYS – 6 in. dia. tail with 1 3/16 in. dia. shaft at bearings in place of 3 1/4 in. when not furnished as standard.

POLY-TIER SUPPORTS – 36 in. to 120 in. support heights in 6 in. increments. Knee braces supplied.

CEILING HANGER – 5/8 in. dia. x 8 ft. long unplated rods fully threaded. Other lengths and galvanized rods available.

MOTOR – Energy efficient, single phase, brake motors, other characteristics. 2 HP maximum.

ELECTRICAL CONTROLS – Non-reversing or reversible magnetic starter, and push-button stations. AC variable frequency drive.

* Capacity affected with these options.