

GAPPER-D

Two-Stage Gapping Belt Conveyor

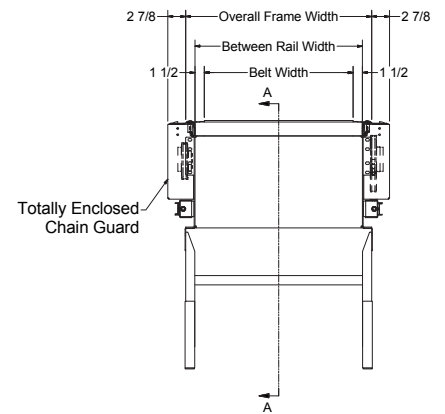
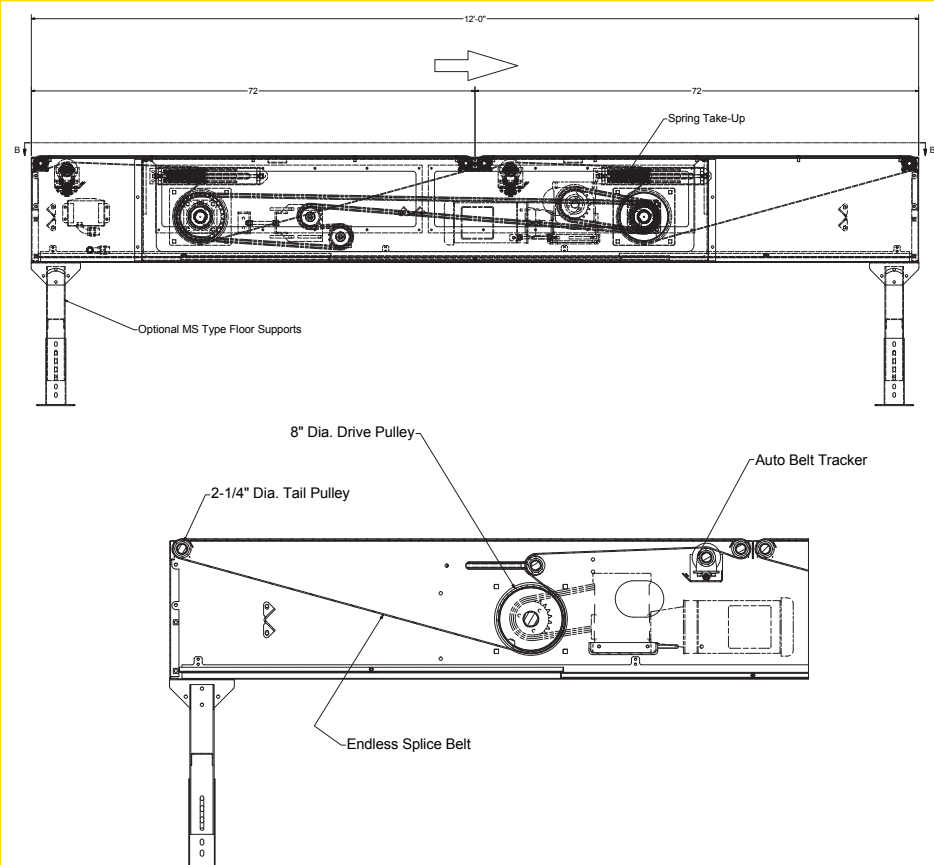
The model Gapper-D is designed for feeding sawtooth merges, combiners, sorters, or other equipment where gaps must be pulled between cartons.

- 2-Stage
- 5 Belt Widths
- High-Grip Longitudinal Grooved Belt; Endless Splice
- Single Bed Design
- Automatic Belt Tracker
- Adjustable MS-Type Floor Supports Available



Conveyor shown with optional floor supports.

Size to Order	Belt Width Between Rail Width Overall	12"	18"	24"	30"	36"
		15"	21"	27"	33"	39"
Overall Length	Frame Width	18"	24"	30"	36"	42"
12'	Weights (lbs.)	761	1015	1269	1523	1777
Weight Per Foot (lbs.)		63	85	106	127	148



Standard Specifications GAPPER-D

BELT – High-Grip longitudinally grooved belt; NSL-11ESBV-U2 Endless Splice.

BED – 12 ga. galvanized slider pan mounted on a 17 in. x 12 ga. powder-painted formed steel channel frame.

SPRING TENSION TAKE-UP – 2 1/4 in. dia. take-up pulley; provides 16 in. of belt take-up.

DRIVE PULLEY – 8 in. dia. with 1 11/16 in. dia. shaft at bearings, flat-faced and lagged.

Note: Maximum operational speed will be limited to carton sizes being conveyed in order to prevent carton tumbling or sliding. Contact Factory for specific application limits.

BEARINGS – Sealed, pre-lubricated, ball bearings on drive. Precision bearings on tail shafts.

MOTOR – 208/230/460/575V, 3 PH., 60 HZ. Premium Energy Efficient C-face.

SPEED REDUCTION – Sealed worm gear C-face speed reducer. No 60 roller chain to drive pulley.

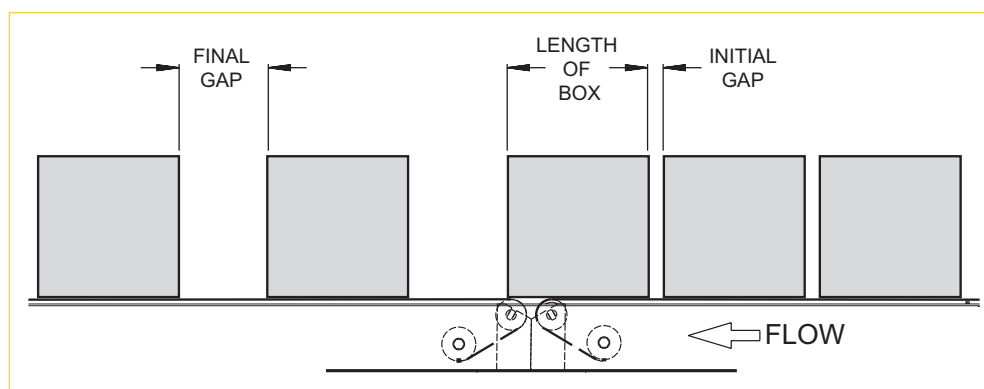
Note: As cartons pass from the infeed belt to the higher speed discharge belt, a gap is created between cartons according to the following formula:

$$\frac{\text{Length of Box} + \text{Final Gap}}{\text{Length of Box} + \text{Initial Gap}} = \text{Speed Gap Ratio (SGR)}$$

Gaps are then measured and speed altered during release of cartons to create desired final gap or pitch. This process is required at each transition where there is a speed change.

$$\text{SGR} = \frac{\text{Discharge Belt Speed}}{\text{Infeed Belt Speed}}$$

SGR
1.25
1.50
1.75
2.00
2.25
2.50



Optional Equipment

FLOOR SUPPORTS – MS Type floor supports are available with a wide range of adjustment. Specify top of belt or roller elevation. One support required at every bed joint and ends of conveyor. Holes in feet for lagging to floor. Knee braces recommended above MS-6 support.

GUARD RAILS – Adjustable Universal Channel Guard Rail, overlapping fixed channel (one direction).

LENGTH – Optional 10 ft. long bed section with 60 in. long infeed and discharge segments.

O-RING DRIVE CHAIN – With sealed-in lubricant (recommended for applications that do not permit regular lubrication).

MOTOR – Single phase, brakemotor, other characteristics.

ELECTRICAL CONTROLS – One direction manual start switch, non-reversing starters, push button stations. AC variable frequency drive.