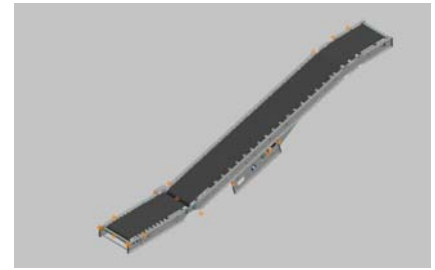


RBI

Belt-Over Roller Incline Conveyor

The model RBI is a floor-to-floor incline conveyor. It is equipped with an adjustable double nose-over at the discharge end to ensure a smooth transfer from the incline to horizontal plane. Inclines are easily adjusted up to 30 degrees. This conveyor can also be used as a booster conveyor in gravity flow systems.

- Center Drive
- Reversible
- Brake Motor
- System Ends
- Double Nose-over
- Pop-Out Roller
- Powered Feeder
- Ceiling Hangers Available
- Adjustable MS-Type Floor Supports Available
- Undertrussing Available



Conveyor shown in Standard Gray.

		"H" @ 25°		Belt Width		12"	18"		24"	30"	36"
Size to Order	Overall Length "A"	Bed Length "L"	"B" @ 25°	Infeed @ 30 1/2"	Between Rail Width	15"	21"	Size to Order OAL "A" 6" Dia. Pulley	27"	33"	39"
4" Dia. Pulley				Discharge @ 30 1/2"	Overall Frame Width	18"	24"		30"	36"	42"
13' 10"	10'	12' 8"	4' 11"			941	1106	14'	1305	1533	1761
15' 10"	12'	14' 7"	5' 8"			971	1142	16'	1347	1581	1815
17' 10"	14'	16' 5"	6' 4"			1001	1178	18'	1389	1629	1869
19' 10"	16'	18' 3"	7' 2"			1031	1214	20'	1431	1677	1923
21' 10"	18'	20' 1"	8' 0"			1061	1250	22'	1473	1725	1977
23' 10"	20'	21' 11"	8' 10"			1091	1286	24'	1515	1773	2031
25' 10"	22'	24' 8"	10' 0"			1121	1322	22'	1557	1821	2085
27' 10"	24'	25' 6"	10' 6"			1151	1358	28'	1599	1869	2139
29' 10"	26'	27' 4"	11' 5"			1181	1394	30'	1641	1917	2193
31' 10"	28'	29' 2"	12' 5"			1211	1430	32'	1683	1965	2247
33' 10"	30'	31' 0"	13' 1"			1241	1466	34'	1725	2013	2301
35' 10"	32'	33' 10"	14' 0"			1271	1502	32'	1767	2061	2355
37' 10"	34'	34' 8"	14' 7"			1301	1538	38'	1809	2109	2409
39' 10"	36'	36' 5"	15' 7"			1331	1574	40'	1851	2157	2463
41' 10"	38'	38' 2"	16' 6"			1361	1610	42'	1893	2205	2517
43' 10"	40'	40' 0"	17' 4"			1391	1646	44'	1935	2253	2571

Note: All weights in catalog are conveyor weights only. Accessories, crating, etc., are not included.

Standard Specifications

BELT – High-Grip Longitudinal Grooved. Clipper lacing.

BED – Roller bed with 1.9 in. dia. roller x 16 ga. galvanized tube spaced every 6 in. Mounted in 6 1/2 in. x 12 ga. powder-painted, formed steel channel frame. Standard 4 ft., 6 ft., 8 ft., and 10 ft. long sections bolt together with splice plates.

CROSS BRACING – Rods with turnbuckles are fastened to underside of bed to provide proper alignment of bed rollers and ensure correct product tracking. Supplied to section adjoining drive and every other section, 20 ft. bed lengths and over. Supplied on bed lengths 9 ft. and over.

DOUBLE NOSE-OVER – A 26 in. long horizontal and a 12 in. long nose-over section provides a two-step transition of product from incline to horizontal. Provides up to 30 degree incline adjustment.

LOW POWERED FEEDER – Chain type driven from tail pulley of inclined conveyor. Supports not included in base price.

CENTER DRIVE – Located on the incline section. Chain guard located on left hand side.

DRIVE PULLEY – 8 in. dia. with 1 7/16 in. dia. shaft at bearings, fully lagged.

TAIL PULLEY – 4 in. dia. with 1 in. dia. shaft at bearings or 6 in. dia. with 1 3/16 in. dia. shaft at bearings; machine crowned.

TAKE-UP PULLEY – 4 6 in. dia. with 1 3/16 in. dia. shaft at bearings; machine crowned.

TAKE-UP – Take-ups in center drive provide 16 in. of belt take-up.

SNUB IDLER/NOSE-OVER ROLLERS – Adjustable 2 1/8 in. dia. or 2 1/2 in. dia. pre-lubricated ball bearings. Snub guards included.

RETURN IDLER – Adjustable 1.9 in. dia., pre-lubricated ball bearings.

BEARINGS – Sealed, pre-lubricated, self-aligning ball bearings on drive, tail, and take-up pulley.

SPEED REDUCTION – Sealed worm gear C-face speed reducer. No. 50 roller chain to drive pulley.

MOTOR – 1 HP, 208/230/460/575V, 3 Ph. 60 Hz. Totally enclosed C-face SSB Brake Motor (6 ft./lb.).

BELT SPEED – Constant 65 FPM.

CAPACITY – Maximum load per linear foot of conveyor 225 lbs. NOT TO EXCEED capacity in charts.

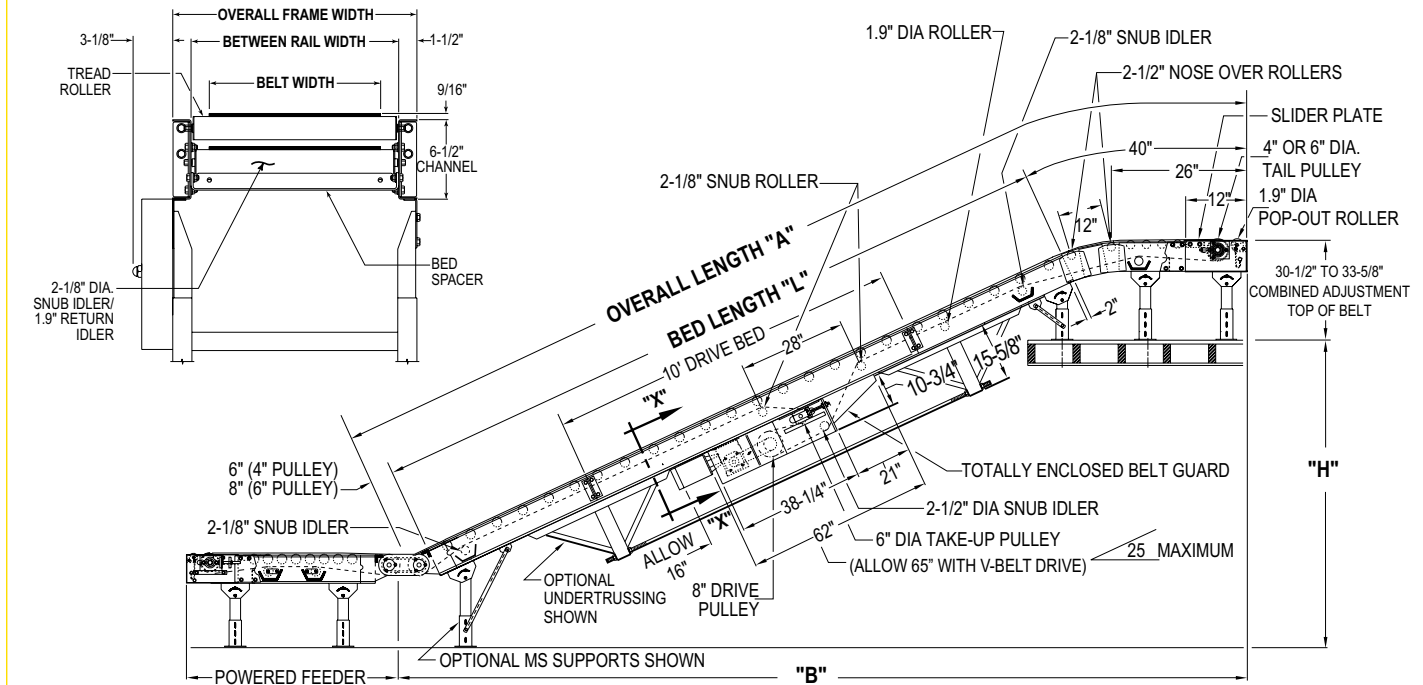
FLOOR SUPPORTS – Supplied as optional equipment.

BR	Belt Width	OAW	Feeder Length
15"	12"	18"	35 1/2"
21"	18"	24"	50 1/2"
27"	24"	30"	67 1/2"
33"	30"	36"	79 1/2"
39"	36"	42"	91 1/2"

Load Capacity Chart 25° Incline @ 65 FPM W/High-Grip BELT Lengths Up To			
HP	Belt Widths To	14'	44'
1	22"	605	585
	30"	595	565
	36"	585	545
2	22"	1245	1225
	30"	1235	1205
	36"	1225	1185

RBI

SECTION X-X



Optional Equipment

FLOOR SUPPORTS – MS Type floor supports are available with a wide range of adjustment. Specify top of belt or roller elevation. One support required at every bed joint and ends of conveyor. Holes in feet for lagging to floor. Knee braces recommended above MS-3 support.

BELT – Black Trackmate 120 Roughtop with PVC Cover, Brown Polymate Roughtop w/Nitrile cover, Pure Gum Rubber Roughtop.

BELT SPEED – Other constant and variable speeds v-belt drive supplied on speeds under 20 FPM (1 HP)–46 FPM (2 HP). Note: Capacity affected with speed change.

V-BELT DRIVE – V-belt supplied between motor and reducer. Allow 65 in.

O-RING DRIVE CHAIN – With sealed-in lubricant (recommended for applications that do not permit regular lubrication).

GUARD RAILS – Adjustable Universal Channel Guard Rail, overlapping fixed channel (one direction), non-overlapping fixed channel (bi-directional).

ROLLER CENTERS – Tread rollers spaced on 3 in., 9 in., or 12 in. centers.

PULLEYS – 6 in. dia. tail pulley with 1 3/16 in. dia. shaft at bearings in place of 4 in. when not furnished as standard.

CEILING HANGER – 5/8 in. dia. x 8 ft. long unplated rods fully threaded. Other lengths and galvanized rods available.

UNDERTRUSSING – Available in place of ceiling hangers. Maximum bed length 40 ft. Maximum overall width 30 in.

MOTOR – Energy efficient, single phase, other characteristics. 2 HP maximum.

ELECTRICAL CONTROLS – Non-reversing and reversible magnetic starters and push button stations. AC variable frequency drive.