

35 ROLLER TRANSFER

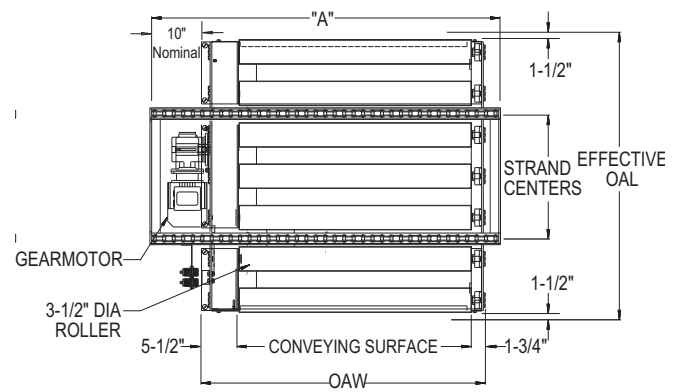
The 35 roller transfer is mounted in a model DC-60 or DCEZ-60 and is used to transfer product from one DC-60 to another DC-60. The 35 roller transfer uses 3 1/2 in. dia x 9 ga. rollers mounted on 6 in. centers. Air bags lift the transfer mechanism. The 35 roller transfer uses a 1/3 HP gearmotor to provide constant 30 FPM.



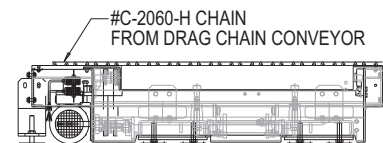
Shown with Optional 2-Strand Drag Chain.

See DC-60 or DCEZ-60 for Drag Chain Specifications.

OAW	Conveying Surface	DIM "A"
41"	33 3/4"	51"
44"	36 3/4"	54"
47"	39 3/4"	57"
50"	42 3/4"	60"
53"	45 3/4"	63"
56"	48 3/4"	66"
59"	51 3/4"	69"
62"	54 3/4"	72"
65"	57 3/4"	75"
68"	60 3/4"	78"
71"	63 3/4"	81"
74"	66 3/4"	84"



Effective OAL	Strand Centers
42"	18"
48"	24"
54"	30"
60"	36"
66"	42"
72"	48"



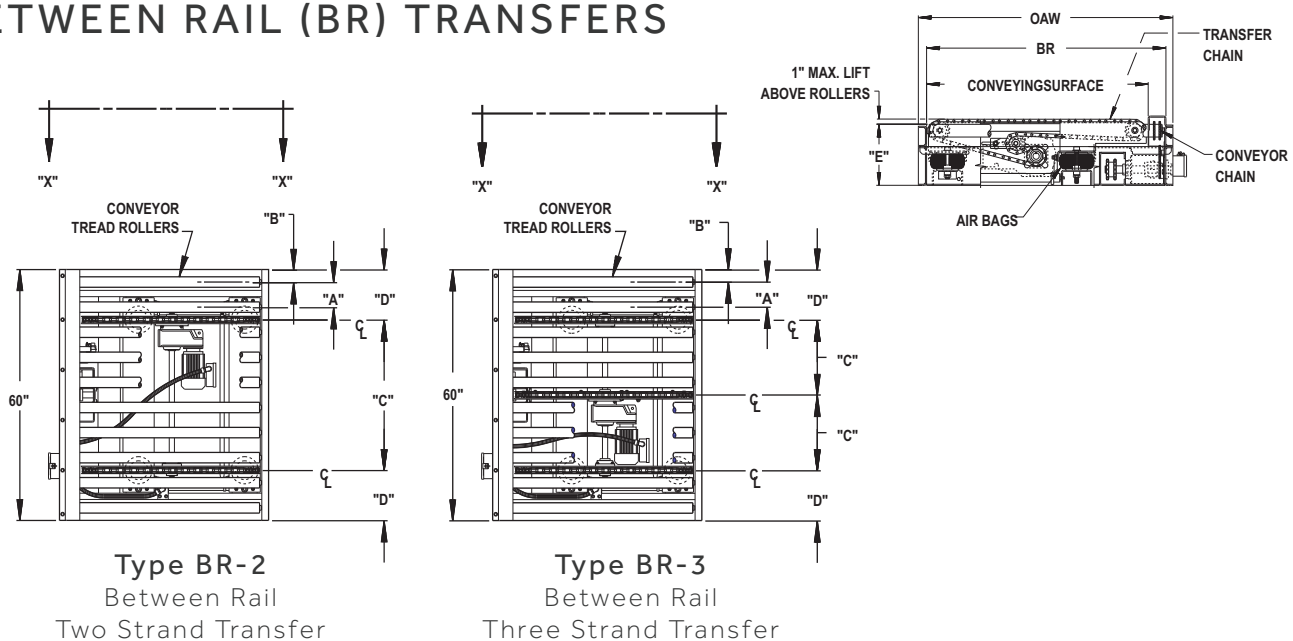
Max. Load: 3000 lbs. at 30 FPM

Note: Extended type and conveyor-to-conveyor type available. Contact factory.

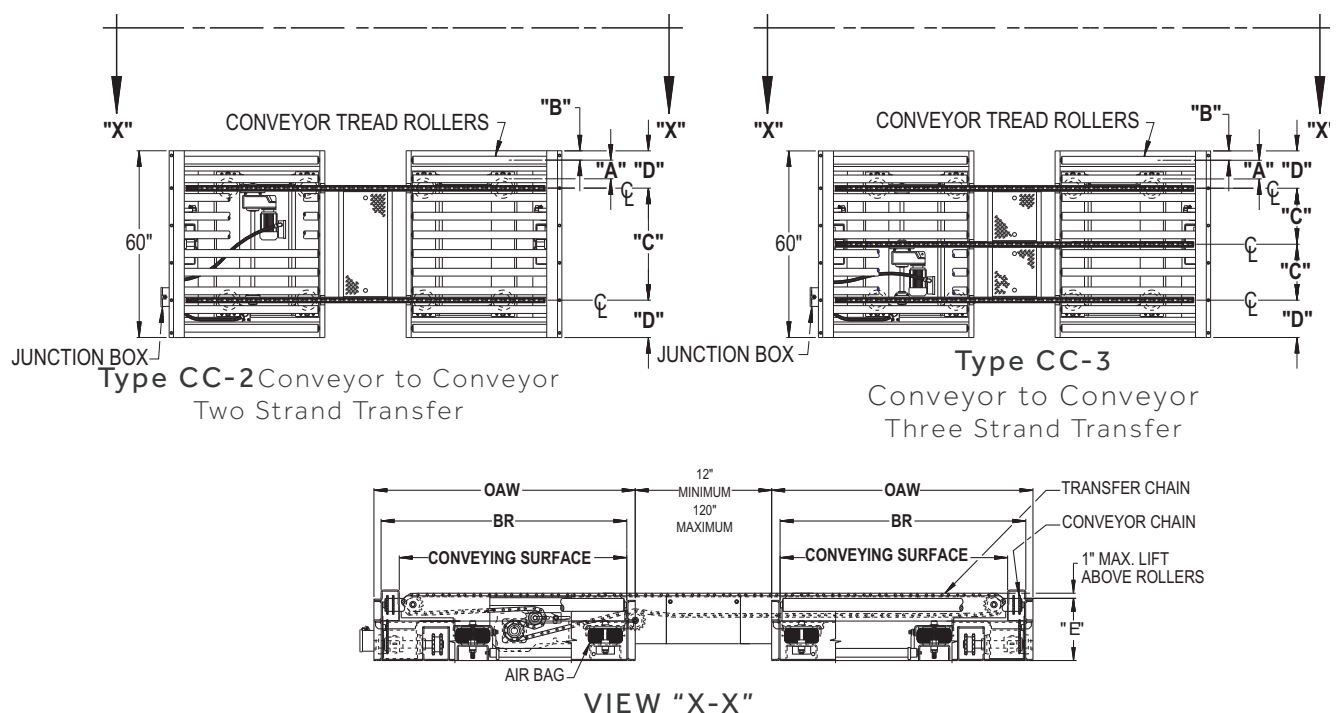
CHAIN TRANSFER

Chain transfers are used to move products at right angles to adjacent or parallel conveyor lines. Air bags lift the transfer mechanism while powered chains transfer the product. Two or three strands of chain are available in either between rail (BR), conveyor-to-conveyor (CC), or extended types. Chains run on UHMW polyethylene wearstrips to reduce friction. Can be used with models 25-CRR, 26-CRR, and 25-CREZD chain driven roller conveyors.

BETWEEN RAIL (BR) TRANSFERS



CONVEYOR TO CONVEYOR (CC) TRANSFERS



REVERSING O-RING TRANSFER (BR TYPE)

Reversing o-ring transfers are used to move products at right angles to adjacent or parallel conveyor lines. An air bag lifts the transfer mechanism while powered o-rings transfer the product. Linear bearings are used to guide transfer as it is raised and lowered. A gearmotor is utilized to operate the reversing mechanism to reverse transfer flow. Can be used with models 138 and 190-NSP/NSPEZ line shaft conveyors.

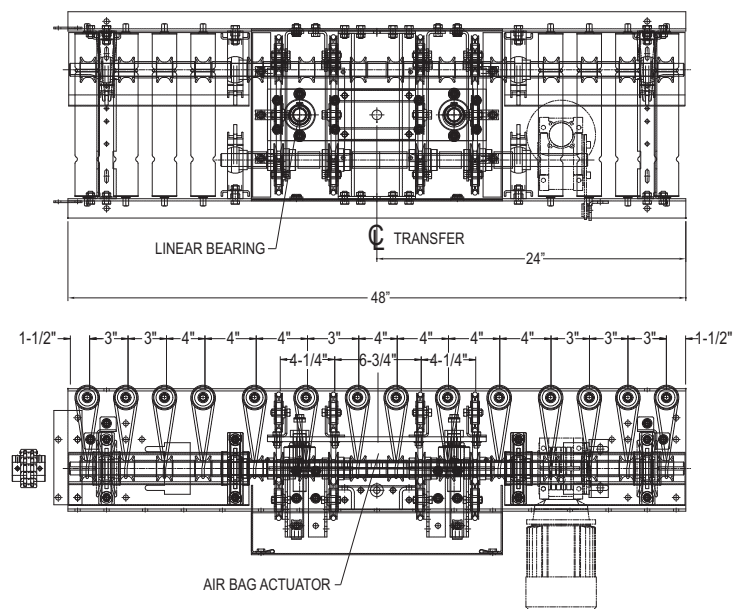
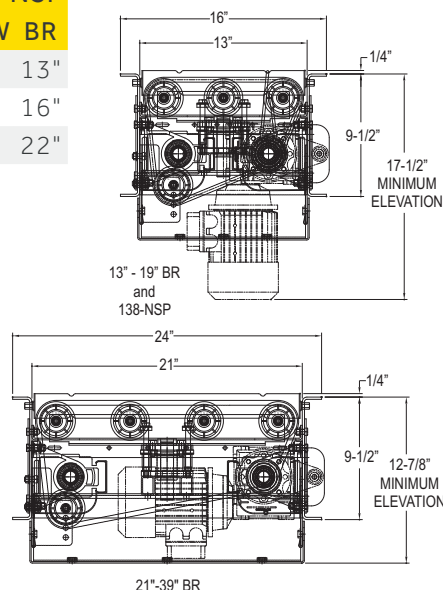


190-NSP OAW BR

16"	13"
18"	15"
20"	17"
22"	19"
24"	21"
26"	23"
28"	25"
30"	27"
34"	31"
36"	33"
40"	37"
42"	39"

138-NSP OAW BR

15"	13"
18"	16"
24"	22"



Note: No accumulation in transfer section.

Standard Specifications

CAPACITY – 75 lbs. maximum unit load.

TRANSFER O-RING – 3/8 in. dia. polyurethane o-ring.

TRANSFER SPEED – Not to exceed speed of conveyor.

DRIVE – Transfer is driven from 230/460/3/60, 1/2 HP shaft-mounted gearmotor.

MOUNTING – Mounted in 48 in. long section of 138-NSP, 190-NSP, 138-NSPEZ, 190-NSPEZ with 3 in. and 4 in. roller centers.

ELECTRICAL CONTROLS – Not furnished as standard equipment.

PNEUMATICS – Air bag (controlled by single solenoid valve) lifts transfer. Requires maintained electrical signal of 115V, 1 Ph. 60 Hz. from photo cell, proximity switch, etc. (not supplied). Transfer will stay in raised position until signal is broken. Current consumption is .09 Amps holding.

AIR REQUIREMENTS – Minimum pressure 60 PSI, maximum 100 PSI with .038 cu.ft. of free air per cycle at 60 PSI. Note: To eliminate contaminants in air supply line, a filter-regulator should be installed prior to air valve (not supplied as standard).

CHAIN TRANSFER (CT 200)

Chain transfers are used to move products at right angles to adjacent or parallel conveyor lines. One air cylinder lifts the transfer mechanism while powered chains transfer the product. Chains run on UHMW polyethylene wearstrips to reduce friction. Complete unit mounts in models ABEZ, 190-ACZ, or 190-LR.

Note: No brakes in ABEZ zone where CT-200 is mounted.



Strand Codes	Strand Qty.	Strand Centers	A	B	C	D
A	2	6	6"	N/A	N/A	18 1/2"
B	2	9	9"	N/A	N/A	21 1/2"
C	2	12	12"	N/A	N/A	24 1/2"
D	3	6, 6	12"	6"	N/A	24 1/2"
E	2	15	15"	N/A	N/A	27 1/2"
F	2	18	18"	N/A	N/A	30 1/2"
G	3	9, 9	18"	9"	N/A	30 1/2"
H	4	6, 6, 6	18"	6"	6"	30 1/2"
J	2	21	21"	N/A	N/A	33 1/2"
K	4	6, 9, 6	21"	6"	9"	33 1/2"
L	2	24	24"	N/A	N/A	36 1/2"
M	3	12, 12	24"	12"	N/A	36 1/2"
N	4	6, 12, 6	24"	6"	12"	36 1/2"
P	4	9, 6, 9	24"	9"	6"	36 1/2"

