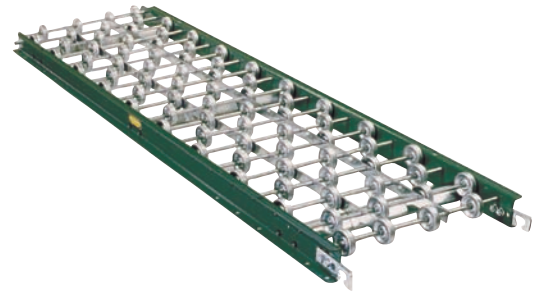


# 3SW/3AW

Skatewheel Conveyor

Gravity Skatewheel conveyor is ideally used to convey lightweight packages or when operation requires lightweight sections. Useful in setting up temporary conveyor lines in warehousing activities, shipping departments, assembly areas, etc.

- 4 Widths
- Powder-Painted Steel or Aluminum Frames
- Axles on 3 in. or 4 in. Centers



### Steel Frames

		12" Overall Width 3" Axle Centers		Wgts. (lbs.)	
Model No.	WPF			5'	10'
		3SW-12-16	16	43	80
3SW-12-12	12	38	72		
3SW-12-10	10	37	68		

### Aluminum Frames

		12" Overall Width 3" Axle Centers		Wgts. (lbs.)	
Model No.	WPF			5'	10'
		3AW-12-16	16	23	43
3AW-12-12	12	21	39		
3AW-12-10	10	20	36		

		15" Overall Width 3" Axle Centers		Wgts. (lbs.)	
Model No.	WPF			5'	10'
		3SW-15-16	16	48	87
3SW-15-12	12	43	78		
3SW-15-10	10	40	73		

		15" Overall Width 3" Axle Centers		Wgts. (lbs.)	
Model No.	WPF			5'	10'
		3AW-15-16	16	26	41
3AW-15-12	12	23	42		
3AW-15-10	10	22	39		

		18" Overall Width 3" Axle Centers		Wgts. (lbs.)	
Model No.	WPF			5'	10'
		3SW-18-20	20	54	98
3SW-18-18	18	49	92		
3SW-18-16	16	46	87		

		18" Overall Width 3" Axle Centers		Wgts. (lbs.)	
Model No.	WPF			5'	10'
		3AW-18-20	20	28	52
3AW-18-18	18	27	49		
3AW-18-16	16	25	46		

		24" Overall Width 3" Axle Centers		Wgts. (lbs.)	
Model No.	WPF			5'	10'
		3SW-24-28	28	65	118
3SW-24-24	24	62	112		
3SW-24-20	20	57	103		

		24" Overall Width 3" Axle Centers		Wgts. (lbs.)	
Model No.	WPF			5'	10'
		3AW-24-28	28	34	63
3AW-24-24	24	32	59		
3AW-24-20	20	30	55		

All weights in catalog are conveyor weights only. Accessories, crating, etc., are not included.

## 3SW/3AW

## Standard Specifications

**WIDTH** – 12 in., 15 in., 18 in., and 24 in. overall.

**FRAME** – 2 1/2 in. deep x 1 in. flange x 12 ga. powder-painted formed steel or 1/8 in. heat-treated aluminum channel with bolt-in cross members.

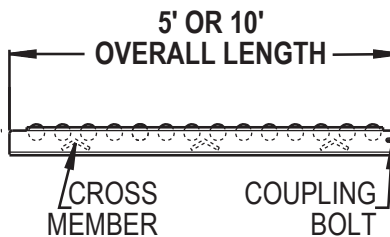
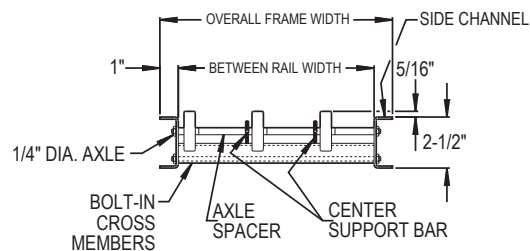
**COUPLINGS** – Butt couplings on both ends.

**LENGTH** – 5 ft. and 10 ft. straight sections.

**WHEELS** – 1 15/16 in. O.D. ball bearings run in hardened raceway with lifetime lubrication. Corrosion-resistant aluminum or zinc-coated steel.

**AXLES** – 1/4 in. dia., threaded one end with locknut. Spaced on 3 in. or 4 in. centers, specify.

**CAPACITY** – See Load Capacity Chart this page.



Load Capacity Chart			
Frame Material	Support Centers	Frame Capacity (lbs.)	Wheel Capacity (lbs.)
		Maximum Distributed Live Load Per Foot	Maximum Load Per Wheel
Steel	5'	250	65
	10'	31	
Aluminum	5'	83	45
	10'	10	