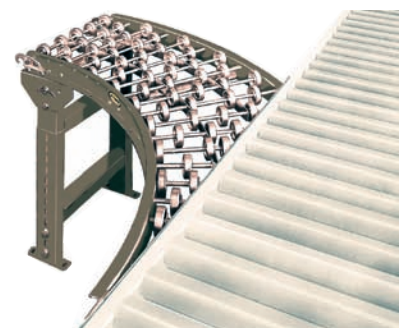


SWS/AWS

Skatewheel Spur Conveyor

Gravity Skatewheel Spurs are used to transfer products from one conveying line onto another. They can be used in merging or diverging applications. Ideally used where numerous lines must transfer onto a main conveyor line from work stations or other similar operations.

- 4 Widths
- Powder-Painted Steel or Aluminum Frames
- Right- and Left-Hand Units
- Butt Couplings on One End
- 30-, 45-, and 90-Degree Spurs



Steel Frames

Overall Frame Width	Model No.	30° Spur		
		"A"	WPS	Wgts. (lbs.)
12"	SWS-12-30	24 3/8"	51	39
15"	SWS-15-30	30 3/8"	67	43
18"	SWS-18-30	36 3/8"	71	47
24"	SWS-24-30	48 3/8"	83	57

Aluminum Frames

Overall Frame Width	Model No.	30° Spur		
		"A"	WPS	Wgts. (lbs.)
12"	AWS-12-30	24 3/8"	51	26
15"	AWS-15-30	30 3/8"	67	29
18"	AWS-18-30	36 3/8"	71	32
24"	AWS-24-30	48 3/8"	83	38

Overall Frame Width	Model No.	45° Spur		
		"A"	WPS	Wgts. (lbs.)
12"	SWS-12-45	21"	54	39
15"	SWS-15-45	30"	70	43
18"	SWS-18-45	30"	77	47
24"	SWS-24-45	39"	97	57

Overall Frame Width	Model No.	45° Spur		
		"A"	WPS	Wgts. (lbs.)
12"	AWS-12-45	21"	54	26
15"	AWS-15-45	30"	70	29
18"	AWS-18-45	30"	77	32
24"	AWS-24-45	39"	97	38

Overall Frame Width	Model No.	90° Spur				
		"A"	"B"	"R"	WPS	Wgts. (lbs.)
12"	SWS-12-90	30"	39 1/8"	36"	46	67
15"	SWS-15-90	39"	35 5/8"	33"	56	72
18"	SWS-18-90	39"	32 11/16"	30"	60	77
24"	SWS-24-90	51"	39 1/2"	36"	94	107

Overall Frame Width	Model No.	90° Spur				
		"A"	"B"	"R"	WPS	Wgts. (lbs.)
12"	AWS-12-90	30"	39 1/8"	36"	46	45
15"	AWS-15-90	39"	35 5/8"	33"	56	47
18"	AWS-18-90	39"	32 11/16"	30"	60	51
24"	AWS-24-90	51"	39 1/2"	36"	94	71

All weights in catalog are conveyor weights only. Accessories, crating, etc., are not included.

SWS/AWS

Standard Specifications

WIDTHS – 12 in., 15 in., 18 in., and 24 in.

FRAME – 2 1/2 in. deep x 1 in. flange x 12 ga. powder-painted formed steel or 1/8 in. heat-treated aluminum channel with bolt-in cross members.

COUPLINGS – Butt couplings on one end. Spur angle on opposite end. Mounting bracket available, specify.

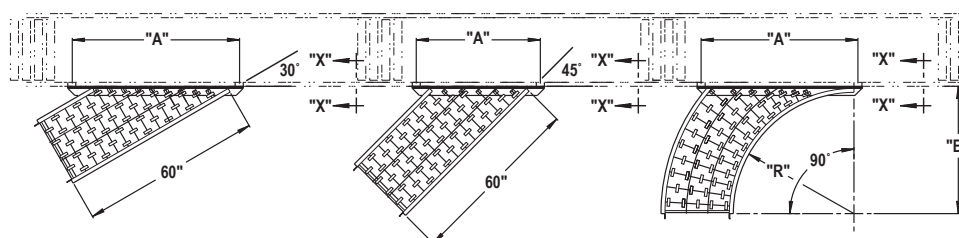
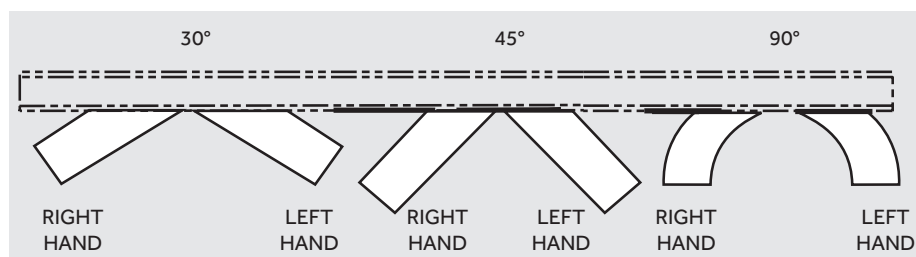
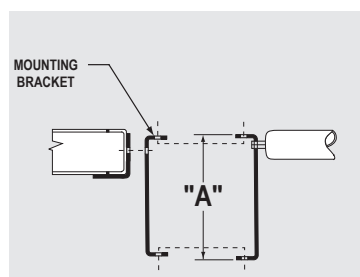
SPUR ANGLE – 30, 45, and 90 degree. Right- or left-hand applications, specify.

WHEELS – 1 15/16 in. O.D. ball bearings run in hardened raceway with lifetime lubrication. Corrosion-resistant zinc-coated steel.

AXLES – 1/4 in. dia., threaded one end with locknut.

CAPACITY – Same per foot capacity as straight sections. See Gravity Skatewheel Conveyor.

For Conveyor Channel Size "A"	Order By Mounting Bracket No.	Drawing Number
2 1/2" x 12 Ga.	K-1	G-571-1
3 1/2" x 10 Ga.	K-2	G-571-2
6 1/2" x 12 Ga.	K-4	G-571-4



SECTION "X-X"

