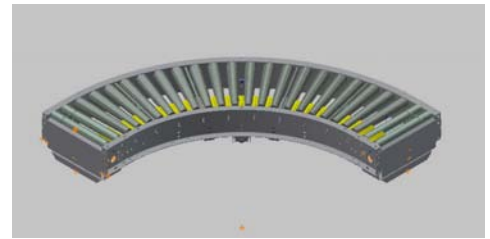


190-LRC

Medium-Duty Live Roller Curve Conveyor

The model 190-LRC is a medium-duty live roller curve that provides a positive drive for negotiating 30-, 45-, 60-, or 90-degree turns. It may be self-powered or can be driven from 190-ACC, LRS, or LRSS conveyors.

- Reversible
- Tapered Tread Rollers
- Adjustable MS-Type Floor Supports Available



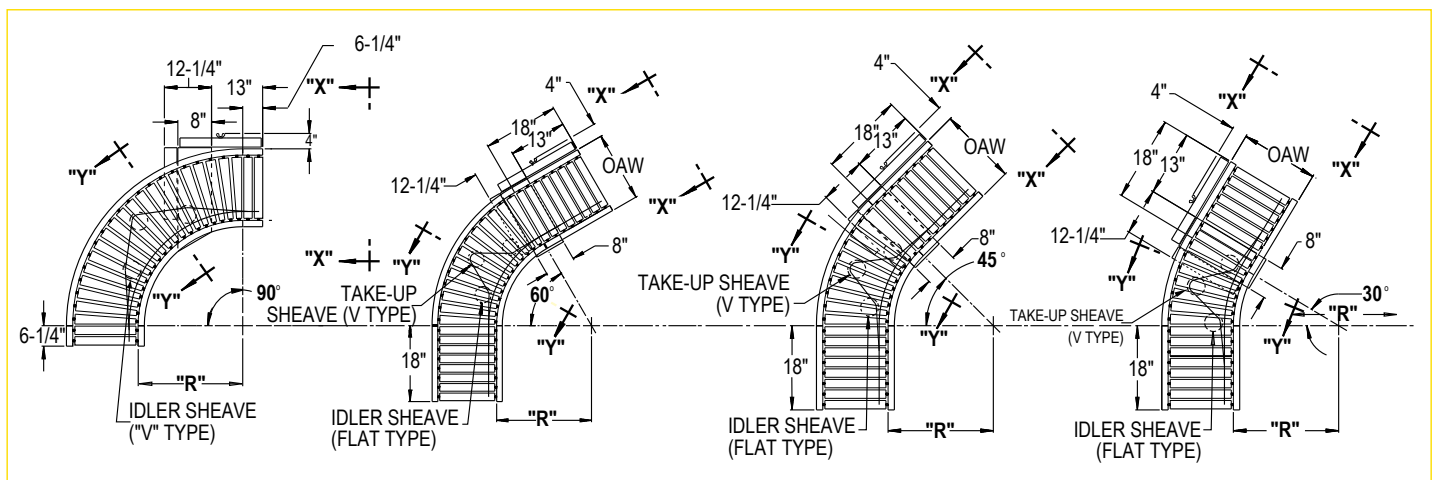
Conveyor shown in Standard Gray.

| Between Rail Width | Overall Frame Width | "R" | Total Number of Rollers* | | | | Weights (lbs.) | | | |
|--------------------|---------------------|---------|--------------------------|---------|---------|---------|----------------|-----|-----|-----|
| | | | 90° | 60° | 45° | 30° | 90° | 60° | 45° | 30° |
| 15" | 18" | | | | | | 349 | 343 | 336 | 300 |
| 21" | 24" | 32 1/2" | 20T/4S | 14T/12S | 10T/12S | 7T/12S | 393 | 386 | 378 | 371 |
| 27" | 30" | | | | | | 442 | 434 | 425 | 417 |
| 33" | 36" | 48" | 30T/4S | 22T/12S | 14T/12S | 10T/12S | 585 | 573 | 562 | 550 |
| 39" | 42" | | | | | | 651 | 638 | 625 | 612 |

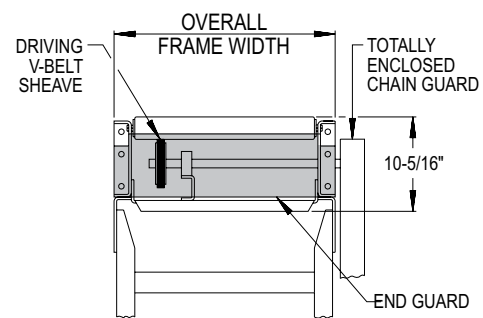
*T = TAPERED

S = STRAIGHT

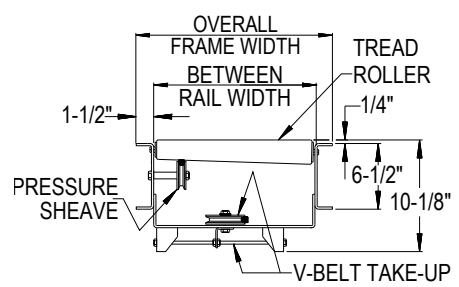
All weights in catalog are conveyor weights only. Accessories, crating, etc., are not included.



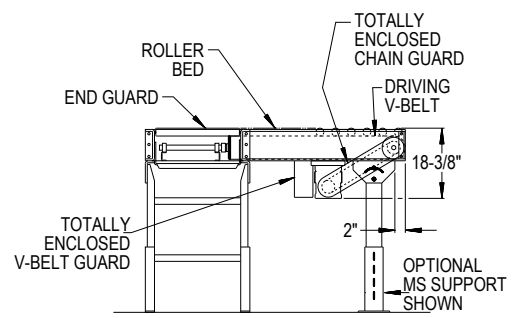
190-LRC



SECTION "X-X"

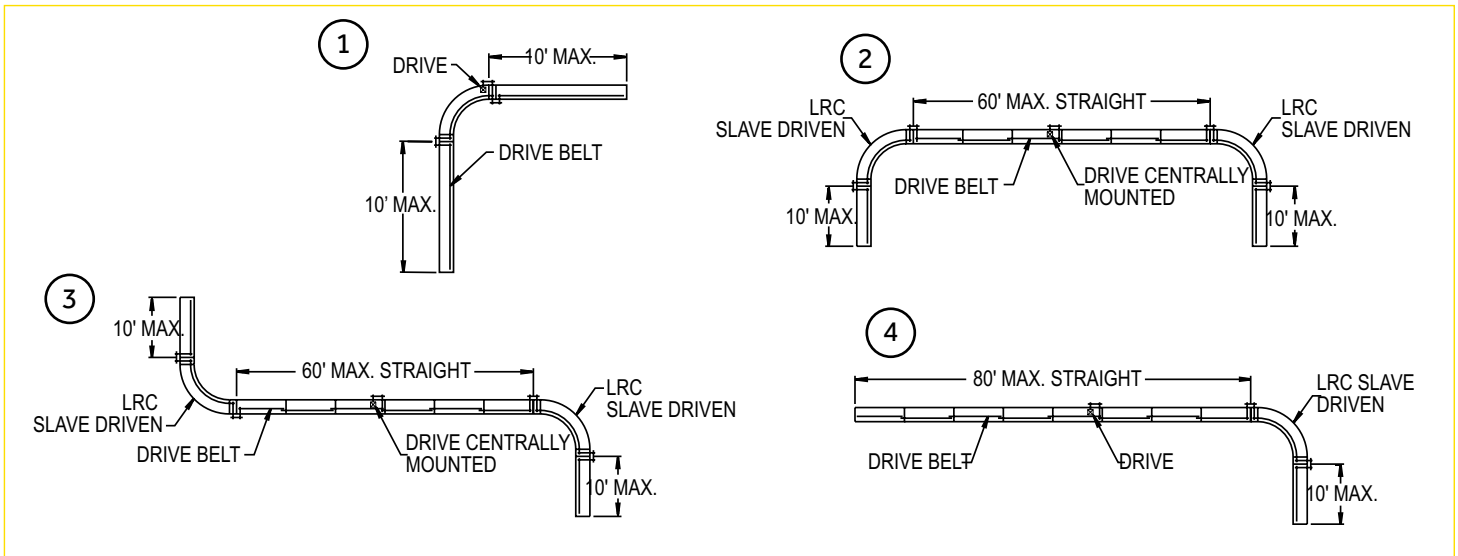


SECTION "Y-Y"



190-LRC

Horsepower required to slave-drive LRCs and LRCTs from ACCs affects the lengths of ACCs due to the capacities of the driving v-belt. The four arrangements shown illustrate basic limitations. Other arrangements are possible.



NOTES:

- Curves may be 30, 45, 60, and 90 degrees
- Curves are not accumulating
- Snub roller adjustment is on drive belt side of conveyor

190-LRC

Standard Specifications

BED – Roller bed with 2 1/2 in. dia. tapered to 1 11/16 in. dia. x 14 ga. galvanized and 1.9 in. dia. roller x 16 ga. galvanized tube. Mounted in 6 1/2 in. x 12 ga. powder-painted formed steel channel frame.

END DRIVE – Mounted underneath bed section on outside radius.

DRIVING BELT – Endless B-section v-belt, industrial grade.

PRESSURE SHEAVES – 2 1/2 in. dia. with 3/8 in. bore.

IDLER SHEAVE – 4 in. dia. x 5/8 in. bore v-type and/or 5 1/2 in. dia. x 5/8 in. bore flat type.

TAKE-UP – Take-ups provided to maintain proper v-belt tension. Includes 4 3/8 in. dia. x 5/8 in. bore v-type take-up sheave.

BEARINGS – Tread rollers have pre-lubricated ball bearings. Flange and pillow block bearings are sealed, pre-lubricated with eccentric lock collar.

BUTT COUPLINGS – Standard for connecting 190-ACC, 190-LRS, 190-LRSS, 190-ACZ, or 190-LR conveyors.

SPEED REDUCTION – Sealed worm gear speed reducer driven by v-belt. No. 50 roller chain to drive sheave.

MOTOR – 1/2 HP, 208/230/460/575V, 3 Ph. 60 Hz. Totally enclosed.

CONVEYING SPEED – Constant 65 FPM.

CAPACITY – 500 lbs. total distributed live load.

FLOOR SUPPORTS – Supplied as optional equipment.

Optional Equipment

FLOOR SUPPORTS – MS Type floor supports are available with a wide range of adjustment. Specify top of belt or roller elevation. One support required at every bed joint and ends of conveyor. Holes in feet for lagging to floor. Knee braces recommended above MS-6 support.

CONVEYING SPEED – Other constant and variable speeds from 25 to 120 FPM. Note: Capacity affected with speed change.

END DRIVE – Mounted on inside radius. Minimum elevation 18 7/8 in.

SIDE MOUNTED DRIVE – Motor reducer unit mounted to side of conveyor. Specify inside or outside. Minimum elevation 11 1/8 in.

O-RING DRIVE CHAIN – With sealed-in lubricant (recommended for applications that do not permit regular lubrication).

GUARD RAILS – Adjustable Universal Channel Guard Rail, fixed channel or type A and B angle. See Accessory section. Note: If product comes in contact with guard rails, product flow will be affected.

POLY-TIER SUPPORTS – 36 in. to 120 in. support heights in 6 in. increments. Knee braces supplied.

CEILING HANGER – 5/8 in. dia. x 8 ft. long unplated rods fully threaded. Other lengths and galvanized rods available.

SLAVE-DRIVEN – Standard drive may be omitted and curve slave-driven from 190-ACC, 190-ACZ, or 190-LR conveyors. Specify by sketch, location of slave connection. Minimum elevation: 11 in.

MOTOR – Energy efficient, single phase, brakemotor, and other characteristics. 1 HP maximum.

ELECTRICAL CONTROLS – Non-reversing or reversible magnetic starters and push-button stations. AC variable frequency drive.