

190-NSPEZC

Live Roller Conveyor (Zero Pressure Accumulating Type)

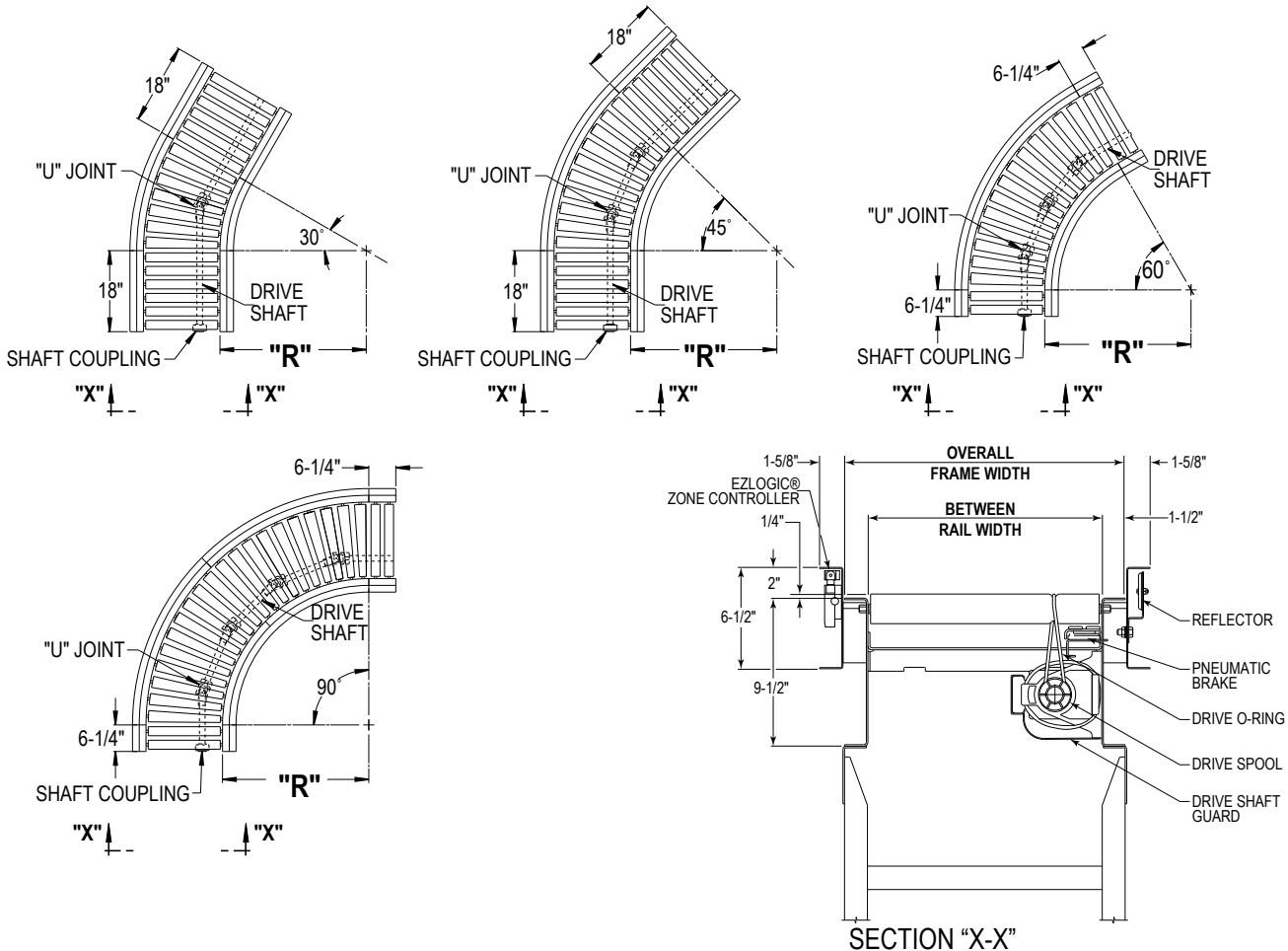
The 190-NSPEZC Curves are designed to be slave driven from the 190-NSPEZ Conveyor. Curves are used where turns in the conveyor line are necessary.

- EZLogic® Accumulation System
- Singulation, Slug or Cascaded Slug Operation
- Dynamic Zone Allocation
- Positive Brake on All Rollers
- Adjustable MS-Type Floor Supports Available

| Between Rail Width | Overall Frame Width | "R" | Total Number of Rollers* | | | | WEIGHTS (Lbs.) | | | |
|--------------------|---------------------|---------|--------------------------|--------|---------|---------|----------------|-----|-----|-----|
| | | | 90° | 60° | 45° | 30° | 90° | 60° | 45° | 30° |
| 13" | 16" | 24" | 16T/4S | 10T/4S | 8T/12S | 5T/12S | 202 | 167 | 180 | 152 |
| 15" | 18" | 32 1/2" | 20T/4S | 12T/4S | 10T/12S | 6T/12S | 251 | 210 | 209 | 173 |
| 17" | 20" | | | | | | 264 | 223 | 218 | 180 |
| 19" | 22" | | | | | | 278 | 236 | 229 | 187 |
| 21" | 24" | | | | | | 290 | 251 | 238 | 196 |
| 23" | 26" | | | | | | 312 | 260 | 249 | 204 |
| 25" | 28" | | | | | | 317 | 273 | 258 | 212 |
| 27" | 30" | 48" | 28T/4S | 20T/4S | 14T/12S | 10T/12S | 332 | 285 | 268 | 222 |
| 31" | 34" | | | | | | 480 | 374 | 346 | 274 |
| 33" | 36" | | | | | | 495 | 386 | 359 | 286 |
| 37" | 40" | | | | | | 529 | 414 | 383 | 299 |
| 39" | 42" | | | | | | 548 | 429 | 395 | 312 |



*T = TAPERED S = STRAIGHT
All weights in catalog are conveyor weights only.
Accessories, crating, etc., are not included.



• STANDARD SPECIFICATIONS

190-NSPEZC

BED—Roller bed with 2 1/2 in. dia. tapered to 1 1/4 in. dia. x 14 ga. galvanized and 1.9 in. dia. roller x 16 ga. galvanized tube. Mounted in 9 1/2 in. x 12 ga. powder painted formed steel channel frame.

SLAVE DRIVEN—Curves and spurs are slave driven from drive shaft of Model 190-NSPEZ conveyor. Shafts are coupled by chain coupling at bed joints.

DRIVE SHAFT—1 in. dia. steel shaft extends full length of conveyor, coupled with universal joints (U joints) at necessary intervals.

DRIVE SPOOLS—2 in. dia. Delrin spool held in place on drive shaft with spool spacers.

DRIVE GUARD—Underside of drive shaft with spools and drive o-rings guarded full length of conveyor.

DRIVE O-RING—3/8 in. dia. polyurethane o-ring from drive spool to tread roller.

BEARINGS—Sealed, pre-lubricated, self-aligning, ball bearings with eccentric lock collar on drive shaft. Pre-lubricated ball bearings in tread rollers.

ACCUMULATION ZONES—24 in. long air controlled. 2 per curve.

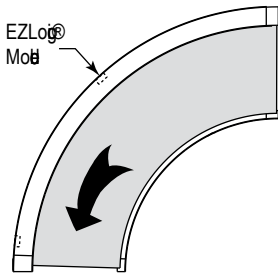
SPLICE ANGLE—Standard for connecting to 190-NSPEZ or 190-NSP.

CAPACITY—Maximum load see capacity chart below.

FLOOR SUPPORTS—Now supplied as optional equipment.

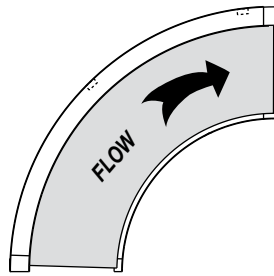
| LOAD CAPACITY CHART | | |
|---------------------|--------------------|--------|
| 190-NSPEZC | | |
| Overall Frame Width | Capacity Per Curve | (Lbs.) |
| 16" | 150 | |
| 18" to 30" | 200 | |
| 34" to 42" | 300 | |

• STANDARD SPECIFICATIONS



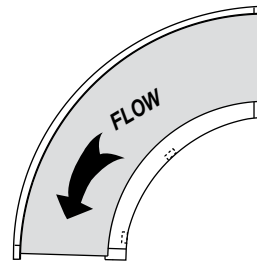
TYPE A
MODULE ON
OUTSIDE OF
THE CURVE

STANDARD



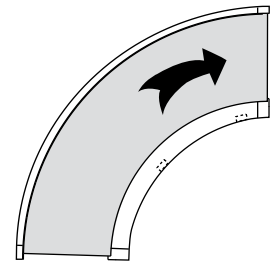
TYPE B
MODULE ON
OUTSIDE OF
THE CURVE

STANDARD



TYPE C
MODULE ON
INSIDE OF THE
CURVE

OPTIONAL



TYPE D
MODULE ON
INSIDE OF THE
CURVE

OPTIONAL

• OPTIONAL EQUIPMENT

FLOOR SUPPORTS—MS Type floor supports are available with a wide range of adjustment. Specify top of belt or roller elevation. One support required at every bed joint and ends of conveyor. Holes in feet for lagging to floor. Knee braces recommended above MS-6 support.

GUARD RAILS—Adjustable Universal Channel Guard Rail, fixed channel or type A or B angle. **Note:** If product comes in contact with guard rails, product flow will be affected.

POLY-TIER SUPPORTS—36 in. to 120 in. support heights in 6 in. increments. Knee braces supplied.

CEILING HANGERS—5/8 in. dia. x 8 ft. long unplated rods fully threaded. Other lengths and galvanized rods available.

EZLogic — See EZLogic Components Page.

