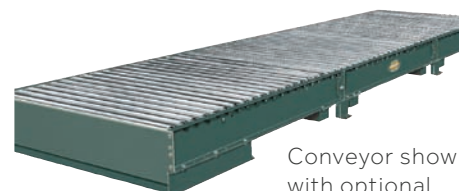


25-LREZ

Heavy-Duty Accumulating Live Roller Conveyor

The model 25-LREZ is a belt-driven live roller conveyor designed for use where zero-pressure accumulation, low elevation (12 in.), and close roller centers are required.

- EZLogic® Accumulation System
- Compact Drive
- Low Elevation
- Adjustable LRAS-Type Floor Supports Available



Conveyor shown with optional floor supports and diffuse EZLogic® Zone Controllers.

Size to Order	Between Rail Width	39"	41"	43"	45"	47"	49"	51"	61"
Overall Length "A"	Overall Frame Width	42"	44"	46"	48"	50"	52"	54"	64"
10'	Weights (lbs.)	1261	1296	1331	1366	1400	1435	1470	1645
15'		1764	1815	1867	1918	1970	2021	2072	2329
20'		2267	2335	2403	2471	2538	2606	2674	3014
25'		2770	2854	2939	3023	3107	3192	3276	3698
30'		3272	3373	3474	3575	3675	3776	3877	4382
35'		3776	3893	4011	4128	4245	4363	4480	5067
40'		4279	4413	4547	4680	4814	4948	5082	5751
45'		4781	4931	5082	5232	5382	5533	5683	6435
50'		5284	5451	5618	5784	5951	6118	6285	7119

All weights in catalog are conveyor weights only. Accessories, crating, etc., are not included. Overall lengths in chart are for 60 in. zones. Other zone lengths will affect overall length.

**Accumulation Zone Lengths

3" Roller Centers 4" Roller Centers 6" Roller Centers

*30"		*30"
*36"	*32"	*36"
*42"	*40"	*42"
*48"	*48"	*48"
*54"	*56"	*54"
60"	60"	60"
66"	72"	66"
72"		72"

*Minimum infeed drive zone length is 60 in. with 3 in., 4 in., and 6 in. roller centers.

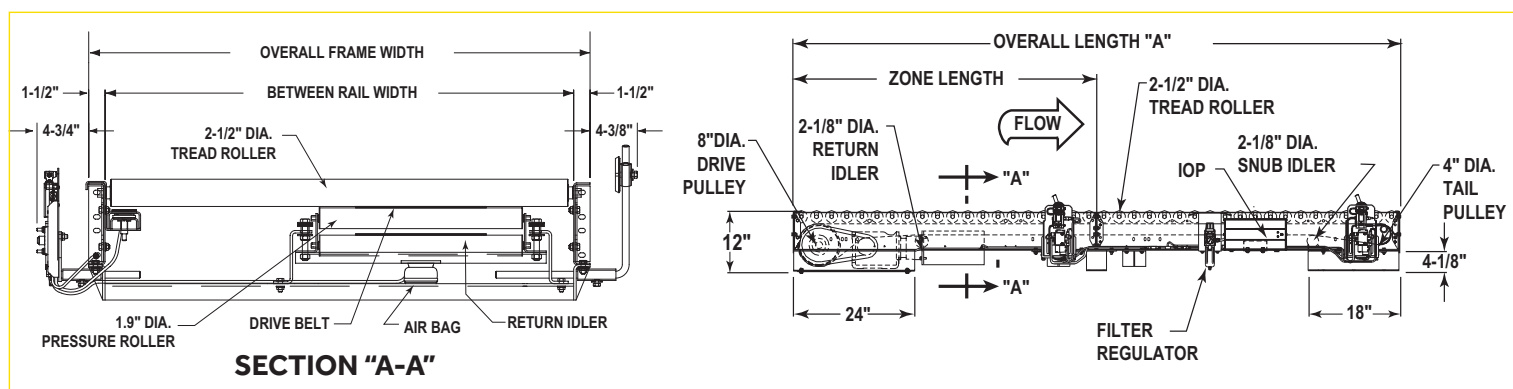
**Frame length and overall length change with zone length.

Load Capacity Chart (Accumulated) @ 30 FPM

Load Capacity Chart (Recommended) Table 1.1						
HP	Overall Frame Width 42" To 48"		Overall Frame Width 50" To 64"		Overall Frame Width 76" To 88"	
	Total Load (lbs.)		Total Load (lbs.)		Total Load (lbs.)	
	Up to 25'	Up to 50'	Up to 25'	Up to 50'	Up to 25'	Up to 50'

1	16500	12900	15400	10800	13700	7500
2	*20000	23000	*20000	20900	*20000	17600

*Limited to 4000 lbs. per accumulation zone.



25-LREZ

Standard Specifications

BELT – 14 in. black Ultimate 140 SD.

BED – Roller bed with 2 1/2 in. dia. x 11 ga. unplated tread rollers spaced every 3 in. and 1.9 in. dia. x 16 ga. unplated pressure rollers spaced every 6 in. Mounted in 7 1/2 in. x 10 ga. powder-painted formed steel channel frame, bolted together with butt coupling.

END DRIVE – Located on infeed end of conveyor.

DRIVE PULLEY – 8 in. dia. with 1 7/16 in. dia. shaft at bearings; machine crowned and fully lagged.

TAIL PULLEY – 4 in. dia. with 1 in. dia. shaft; machine crowned.

SNUB IDLER – Adjustable 2 5/8 in. dia. at drive pulley, 2 1/8 in. dia. at tail pulley. Pre-lubricated ball bearings.

RETURN IDLER – 2 1/8 in. dia. at drive end, all others 1.9 in. dia. unplated. Pre-lubricated ball bearings.

TAKE-UP – Take-up at tail pulley.

BEARINGS – Sealed, pre-lubricated, self-aligning ball bearings on drive and tail pulley. Sealed, pre-lubricated ball bearings in tread and pressure rollers.

ACCUMULATION ZONES – 3 in. roller centers, 30 in. to 72 in. on 3 in. increments. 4 in. roller centers, 32 in. to 72 in. on 4 in. increments. 6 in. roller centers, 30 in. to 72 in. on 6 in. increments. Minimum length of infeed zone drive is 60 in. Frame length changes with zone length.

Note: Operating 25-LREZ in slug mode is not recommended. Product footprint may affect drive capacity.

Optional Equipment

FLOOR SUPPORTS – LRAS Type floor supports are available with a wide range of adjustment. Specify top of belt or roller elevation. One support required at every bed joint and ends of conveyor. Holes in feet for lagging to floor.

CONVEYING SPEED – Other constant speeds to 50 FPM. Note: Capacity and accumulation feature affected with speed change.

UNDERSIDE TAKE-UP – Provides 12 in. of belt take-up. Minimum elevation: 12 in. (required on units 40 ft. or longer). Must be located in 4 ft. long intermediate section.

TREAD ROLLER BRAKE – Friction type brake stops tread rollers to prevent coasting of product in accumulation zone.

EZLOGIC® ZONE CONTROLLER – Located in each zone (retro-reflective). NEMA 1, 2, IP 62. UL Approved.

IOP – Provides 27VDC, 100 watt power for EZLogic® accumulation system; contains slots for 4 input/output boards. Requires 120VAC or 230VAC single phase input.

AIR REQUIREMENTS – Recommended working pressure 40 PSI. Free air consumption at 40 PSI, .028 cu. ft. per sensor actuation.

FILTER, REGULATOR – Supplied for main air supply line (3/8 in. NPT port).

SPEED REDUCTION – Sealed helical bevel C-face gear reducer. No. 60 roller chain to drive pulley.

MOTOR – 1 HP, 208/230/460/575V, 3 Ph. 60 Hz. Totally enclosed C-face.

CONVEYING SPEED – Constant 30 FPM.

CAPACITY – Maximum load per linear foot of conveyor: 1000 lbs. Maximum unit load 4000 lbs. Total load NOT TO EXCEED capacity in charts.

FLOOR SUPPORTS – Supplied as optional equipment.

O-RING DRIVE CHAIN – With sealed-in lubricant (recommended for applications that do not permit regular lubrication).

TREAD ROLLERS – 2 5/8 in. dia. x 7 ga. unplated steel, 11/16 in. hex spring loaded shaft.

MOTOR – Energy efficient, single phase, and other characteristics. 2 HP maximum.

ELECTRICAL CONTROLS – Non-reversing magnetic starter; push-button stations. AC variable frequency drive.

EZLOGIC® – See EZLogic® Components page.