

NBEZ

Electromagnetic Accumulating Live Roller Conveyor

The model NBEZ is a horizontal narrow-belt-driven live roller conveyor, designed for applications that require accumulation of products without a build-up of line pressure while providing high throughput and density. It utilizes 24VDC electromagnetic actuation to engage the pressure carriage to drive the rollers.

- EZLogic® Accumulation System
- All-Electric Accumulation
- Dense Product Accumulation
- Endless Splice Belt
- 1.9 in. Diameter Rollers with ABEC-1 Bearings
- Adjustable MS-Type Floor Supports Available



Conveyor shown with optional floor supports.

Between Rail Width	15"	21"	27"	33"	39"
Overall Frame Width	18"	24"	30"	36"	42"
Base Weight	574	634	694	754	814
Weight Per Foot (lbs.)	18	24	30	36	42

All weights in catalog are conveyor weights only. Accessories, crating, etc., are not included.

Bed sections available in the following multiples:

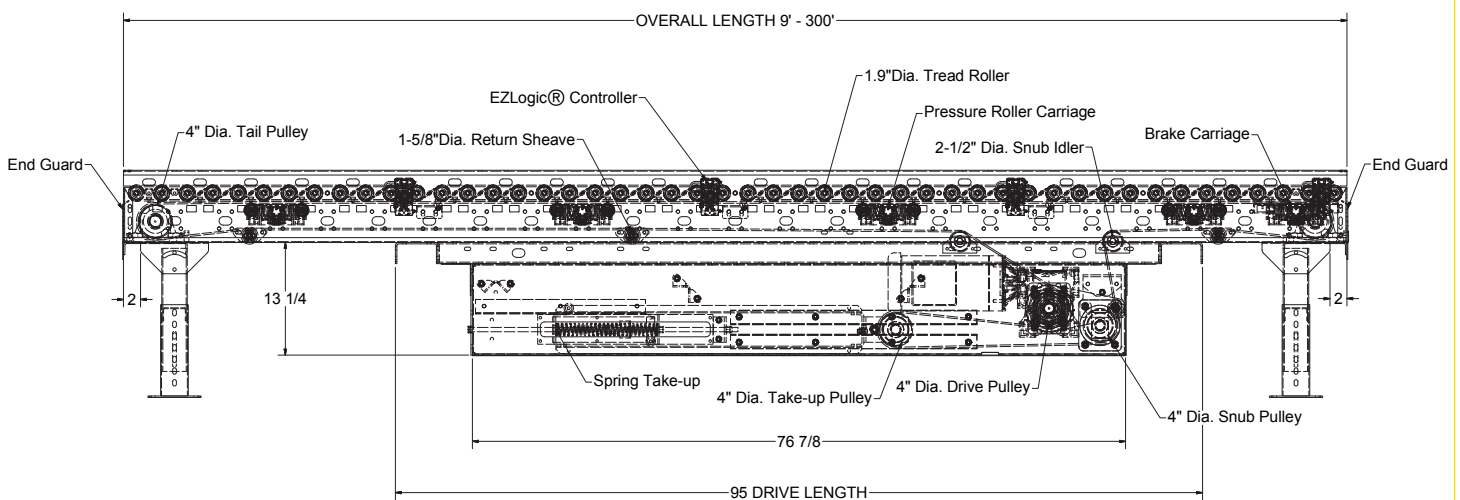
24" Zones 2', 4', 6', 8', 10', and 12'

36" Zones 3', 6', 9', and 12'

Overall length must be divisible by zone length.

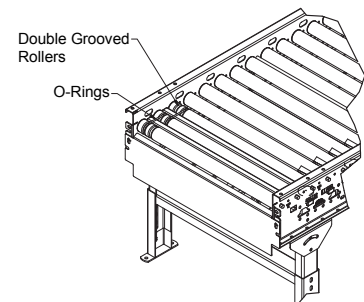
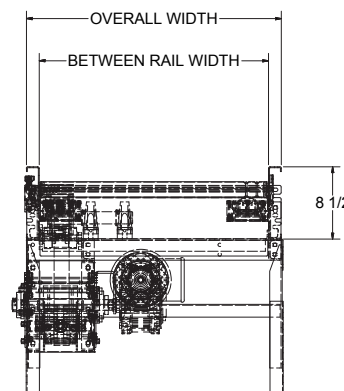
Total Weight - 1 ft. base weight + Per foot weight x Extra length

Base Weight - 12 ft. section w/drive and tails



SET LOW SHOWN WITH STANDARD DRIVE AND STANDARD O-RINGS SLAVED ZONES.

(Located in the First Bed Section 9' or Longer from Infeed End)
Minimum Elevation: 20" Top of roller



Standard Specifications

BED – Roller bed with 1.9 in. dia. rollers x 16 ga. galvanized tube with ABEC-1 bearings spaced every 3 in. mounted in 8 1/2 in x 12 ga. powder-painted formed steel channel frame, bolted together with butt couplings.

BELT – 45 mm wide polyurethane thermoplastic with aramid cords and endless splice.

CENTER DRIVE – Can be placed on any conveyor section 9ft. or longer; spring take-up provides 32 in. of belt take-up.

GEARMOTOR – Shaft-mounted hollow bore.

BRAKE – Full zone at discharge.

SPEED RANGE – 51 to 275 FPM.

SET LOW CHANNEL – 8 1/2 in. deep C channel.

Optional Equipment

FLOOR SUPPORTS – MS Type floor supports are available with a wide range of adjustment. Specify top of belt or roller elevation. One support required at every bed joint and ends of conveyor. Holes in feet for lagging to floor. Knee braces recommended above MS-6 support.

BRAKES – Four-roller electromagnetic brakes located at the discharge of zone; can be placed in any or all zones.

GUARD RAILS – Adjustable universal channel guard rail. See Accessory section. Note: If product comes into contact with guard rails, product flow will be affected. Fixed channel overlapping; one direction.

POLY-TIER SUPPORTS – 36 in. to 120 in. support heights in 6 in. increments. Knee braces required.

EZLOGIC® ZONE CONTROLLER – Located in each zone. (retro-reflective). NEMA 1,2, IP 62. UL approved.

IOP – Provides 27VDC, 100 watt power for EZLogic® accumulation system. Contains slots for 4 input/output boards. Operates up to (18) 24 in. zones or (13) 36 in. zones. Additional power supplies and power isolation cables needed for longer lengths. Requires 120VAC or 230VAC single phase input.

ACCUMULATION ZONES – 24 and 36 in. long electrically actuated. Note: Over 12 zones require an additional IOP, isolation cable, and power supply T cable.

CAPACITY – Maximum load per zone 75 lbs.

PRESSURE FRAME CARRIAGE – Located on 12 in. centers and contains two Delrin rollers to drive four tread rollers when electrically actuated.

CEILING HANGER – 5/8 in. dia. x 8 ft. long unplated steel rods fully threaded. Other lengths and galvanized rods available.

EZLOGIC® – See EZLogic® Components page.

BELT SPLICE KIT – Includes press, finger cutter, and guide rail.