

NBEZA

Accumulating Live Roller Conveyor

The model NBEZA is a horizontal narrow-belt-driven live roller conveyor, designed for applications that require accumulation of products without a build-up of line pressure while providing high throughput and density. It utilizes pneumatic actuation to engage the pressure carriage to drive the rollers.

- EZLogic® Accumulation System
- Pneumatic Actuation
- Endless Splice Belt
- Adjustable MS-Type Floor Supports Available



Conveyor shown with optional floor supports.

Between Rail Width	15"	21"	27"	33"	39"
Overall Frame Width	18"	24"	30"	36"	42"
Base Weight (lbs.)	574	634	694	754	814
Weight Per Foot (lbs.)	18	24	30	36	42

All weights in catalog are conveyor weights only. Accessories, crating, etc., are not included.

Note: Bed sections available in the following multiples:

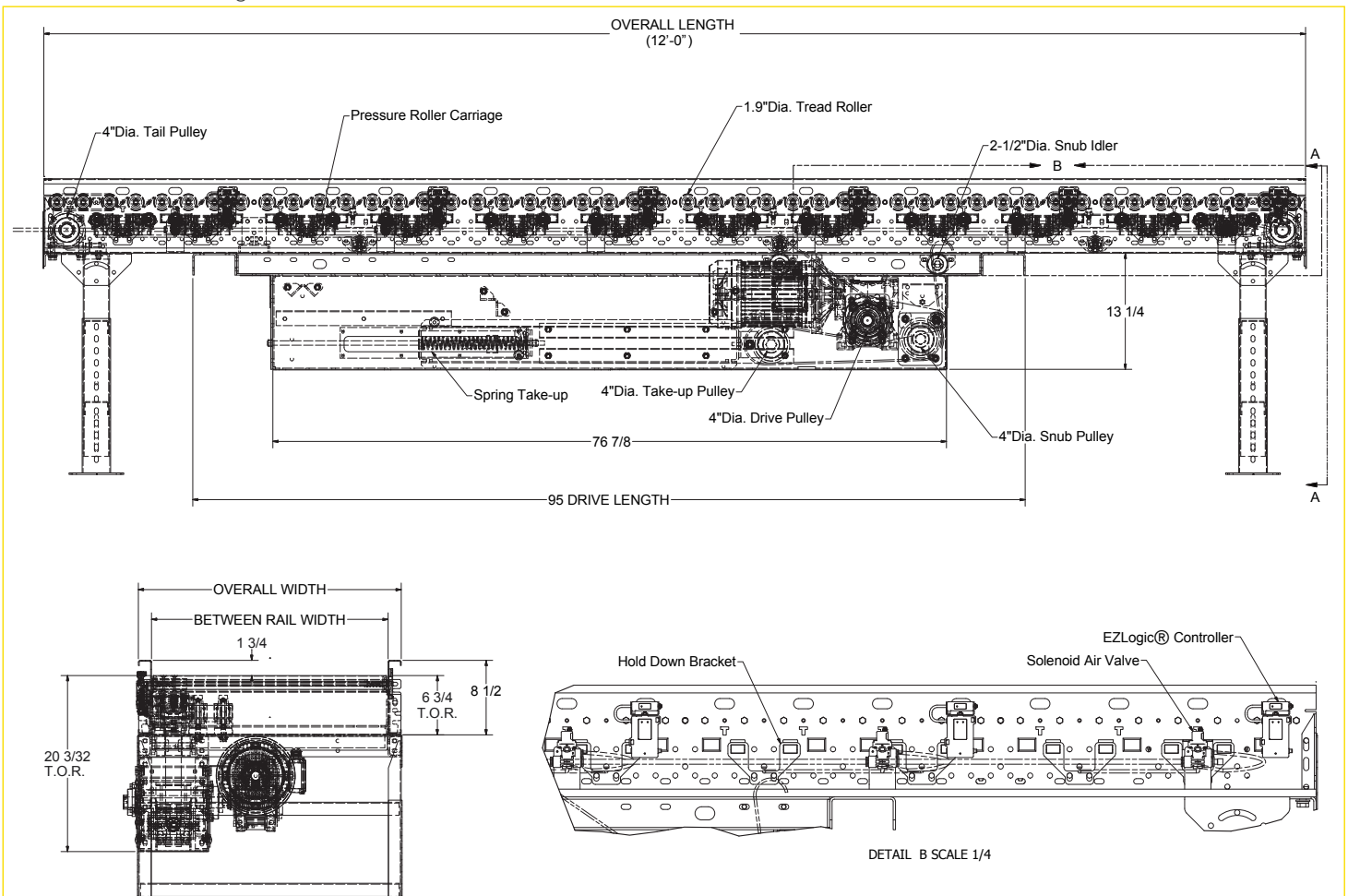
24" Zones 2', 4', 6', 8', 10', and 12'

36" Zones 3', 6', 9', and 12'

Overall length must be divisible by zone length.

Total Weight - 12 ft. base weight + Per foot weight x Extra length

Base Weight - 12 ft. section w/drive and tails



Standard Specifications

BED – Roller bed with 1.9 in. dia. rollers x 16 ga. galvanized tube with ABEC-1 bearings spaced every 3 in. Mounted in 8 1/2 in. x 12 ga. powder-painted formed steel channel frame bolted together with butt couplings.

BELT – 45 mm wide polyurethane thermoplastic with aramid cords.

CENTER DRIVE – Can be placed on any conveyor section 9 ft. or longer; spring take-up which provides 32 in. of belt take-up.

GEARMOTOR – Shaft-mounted hollow bore.

BRAKE – Full zone at discharge.

SPEED RANGE – 51 to 275 FPM

SET LOW CHANNEL – 8 1/2 in. deep C channel.

EZLOGIC® ZONE CONTROLLER – Located in each zone (retro-reflective). NEMA 1, 2, IP 62. UL Approved.

IOP – Provides 27VDC, 100 watt power for EZLogic® accumulation system; contains slots for 4 input/output boards. Operates up to 50 zones (25 each side of IOP). Requires 120VAC or 230VAC single phase input.

ACCUMULATION ZONES – 24 and 36 in. long pneumatically actuated. Note: Over zones require an additional IOP, isolation cable, and power supply T cable.

CAPACITY – Maximum load per zone 75 lbs.

PRESSURE FRAME CARRIAGE – Contains two Delrin rollers to provide positive drive to four tread rollers when actuated by air bag.

AIR REQUIREMENTS – Recommended working pressure 12 PSI.

FILTER/REGULATOR – One filter/regulator is supplied for the main air supply line (3/8 in. NPT port). Main air from compressor should be supplied to each filter/regulator.

Optional Equipment

FLOOR SUPPORTS – MS Type floor supports are available with a wide range of adjustment. Specify top of belt or roller elevation. One support required at every bed joint and ends of conveyor. Holes in feet for lagging to floor. Knee braces recommended above MS-6 support.

BRAKES – Four-roller air-operated brakes located at the discharge of zone and can be placed in any or all zones.

GUARD RAILS – Adjustable universal channel guard rail. See Accessory section. Note: If product comes into contact with guard rails, product flow will be affected. Fixed channel overlapping; one direction.

POLY-TIER SUPPORTS – 36 in. to 120 in. support heights in 6 in. increments. Knee braces required.

CEILING HANGER – 5/8 in. dia. x 8 ft. long unplated steel rods fully threaded. Other lengths and galvanized rods available.

ELECTRICAL MOTOR CONTROLS – Non-reversing magnetic starters and push-button stations. AC variable frequency drive.

EZLOGIC® – See EZLogic® Components page.

BELT SPLICE KIT – Includes press, finger cutter, and guide rail.