

WHEEL

Gravity Skatewheel Spur Conveyor

Gravity Skatewheel Spurs are used to transfer products from one conveying line onto another. They can be used in merging or diverging applications. Ideally used where numerous lines must transfer onto a main conveyor line, from work stations or other similar operations.

- 4 Widths
- Powder Painted Steel or Aluminum Frames
- Right & Left Hand Units
- Butt Couplings on One End
- 30°, 45° & 90° Spurs



STEEL FRAMES

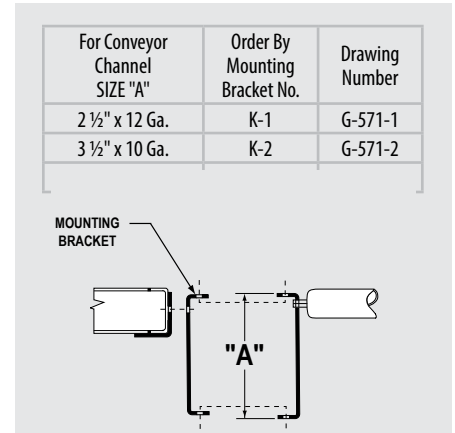
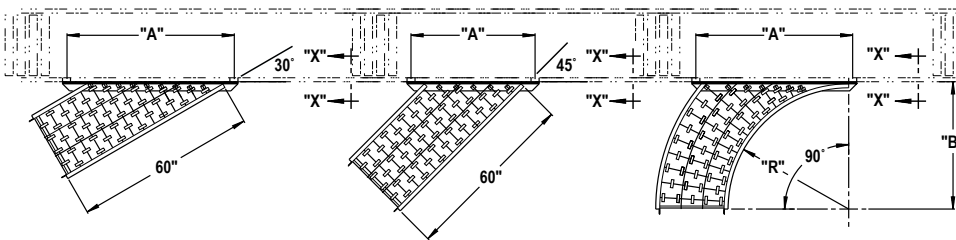
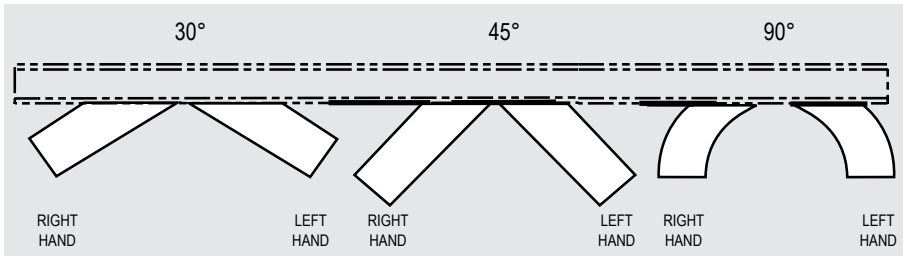
Overall Frame Width	Model No.	30° SPUR			Model No.	45° SPUR			Model No.	90° SPUR				
		"A"	WPS	Wgts. (Lbs.)		"A"	WPS	Wgts. (Lbs.)		"A"	"B"	"R"	WPS	Wgts. (Lbs.)
12"	SWS-12-30	24 3/8"	51	39	SWS-12-45	21"	54	39	SWS-12-90	30"	39 1/8"	36"	46	67
15"	SWS-15-30	30 3/8"	67	43	SWS-15-45	30"	70	43	SWS-15-90	39"	35 5/8"	33"	56	72
18"	SWS-18-30	36 3/8"	71	47	SWS-18-45	30"	77	47	SWS-18-90	39"	32 1/16"	30"	60	77
24"	SWS-24-30	48 3/8"	83	57	SWS-24-45	39"	97	57	SWS-24-90	51"	39 1/2"	36"	94	107

All weights in catalog are conveyor weights only. Accessories, crating, etc., are not included.

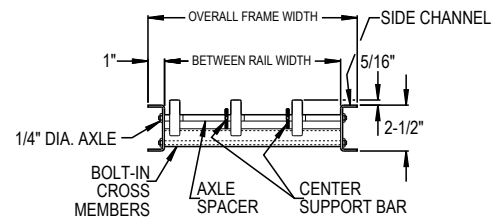
ALUMINUM FRAMES

Overall Frame Width	Model No.	30° SPUR			Model No.	45° SPUR			Model No.	90° SPUR				
		"A"	WPS	Wgts. (Lbs.)		"A"	WPS	Wgts. (Lbs.)		"A"	"B"	"R"	WPS	Wgts. (Lbs.)
12"	AWS-12-30	24 3/8"	51	26	AWS-12-45	21"	54	26	AWS-12-90	30"	39 1/8"	36"	46	45
15"	AWS-15-30	30 3/8"	67	29	AWS-15-45	30"	70	29	AWS-15-90	39"	35 5/8"	33"	56	47
18"	AWS-18-30	36 3/8"	71	32	AWS-18-45	30"	77	32	AWS-18-90	39"	32 1/16"	30"	60	51
24"	AWS-24-30	48 3/8"	83	38	AWS-24-45	39"	97	38	AWS-24-90	51"	39 1/2"	36"	94	71

All weights in catalog are conveyor weights only. Accessories, crating, etc., are not included.



SECTION "X-X"



• STANDARD SPECIFICATIONS

WIDTHS—12 in., 15 in., 18 in., & 24 in.

FRAME—2 1/2 in. deep x 1 in. flange x 12 ga. powder painted formed steel or 1/8 in. heat-treated aluminum channel with bolt-in cross members.

COUPLINGS—Butt Couplings on one end. Spur angle on opposite end. Mounting bracket available, specify.

SPUR ANGLE—30°, 45° & 90°. Right or left hand applications, specify.

WHEELS—1 1/16 in. O.D. ball bearings run in hardened raceway with life-time lubrication. Corrosion resistant zinc-coated steel.

AXLES—1/4 in. dia., threaded one end with locknut.

CAPACITY—Same per foot capacity as straight sections. See Gravity Skatewheel Conveyor.