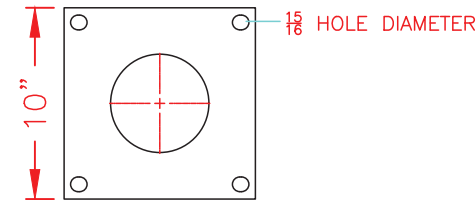


IDEAL SHIELD
PLATED STANDARD GUARDRAIL GATE
PART#: SGG-2-INSIDE LENGTH-48-PLATED

WRITE REQUIRED INSIDE CLEARANCE:
(READ SIZE CHART BELOW)

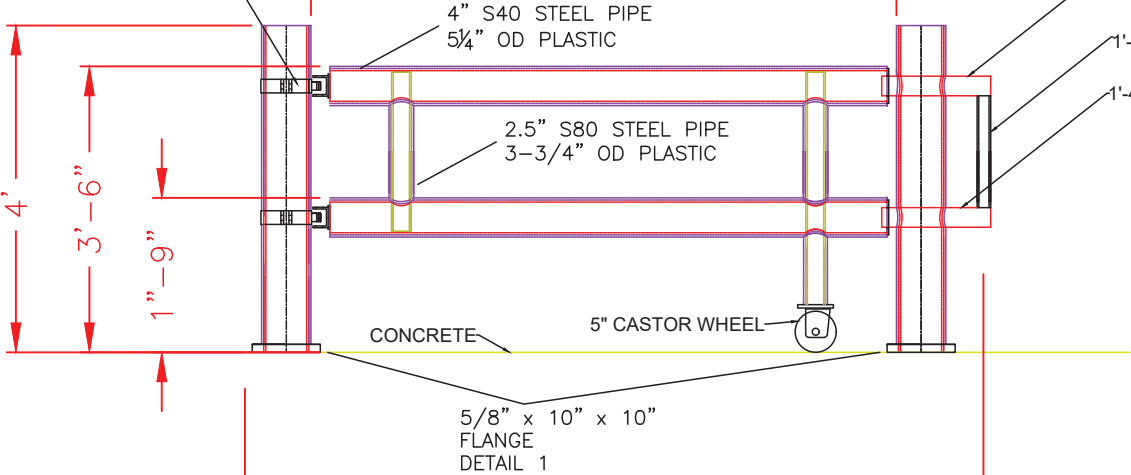
STANDARD LENGTHS	
REQUIRED INSIDE CLEARANCE	MINIMUM INSTALL LENGTH
4'-0"	6'-9"
6'-0"	8'-9"
8'-0"	10'-9"
10'-0"	12'-9"
12'-0"	14'-9"
NOTE ADD 2'-9" FOR CUSTOM MINIMUM INSTALL LENGTH	

DETAIL 1



5/8" x 10" x 10"
BASEPLATE

CI2051 HINGE CLAMP X2



SLIDING LOCK ASSEMBLY
(HOT DIP GALVANIZED FINISH)

1'-4"X³/₄"X1¹/₄" SQUARE TUBE

1'-4" - 2.5" SCH 40 PIPE X2

4" S40 STEEL PIPE
5¹/₄" OD PLASTIC

2.5" S80 STEEL PIPE
3-3³/₄" OD PLASTIC

CONCRETE

5" CASTOR WHEEL

5/8" x 10" x 10"
FLANGE
DETAIL 1

SPECIAL INSTRUCTIONS:

qty.

MIN INSTALL LENGTH (SEE CHART ABOVE)

NO.	REVISIONS	DATE	APPROVED

PROJECT

CUSTOMER

DESCRIPTION
PLATED GOAL POST
WITH STANDARD GUARDRAIL GATE
CUSTOM

DRAWN BY

D.P.

PROJECT NO.

-

DATE

NA

REVISION

PIPE & PLASTIC

APPROVED BY

DATE

REVISION

SHEET

1

OF

1