

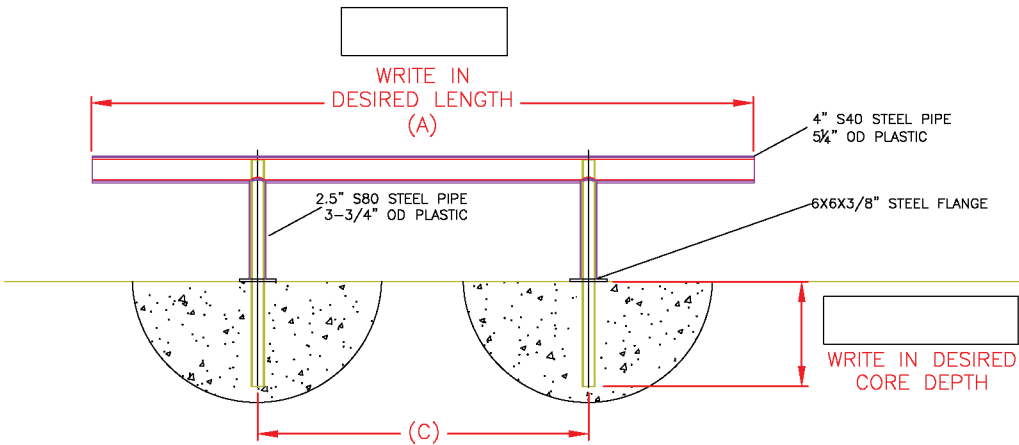


CORE AND DROP STANDARD GUARDRAIL
PART#: SGR-1-LENGTH-HEIGHT-CORED

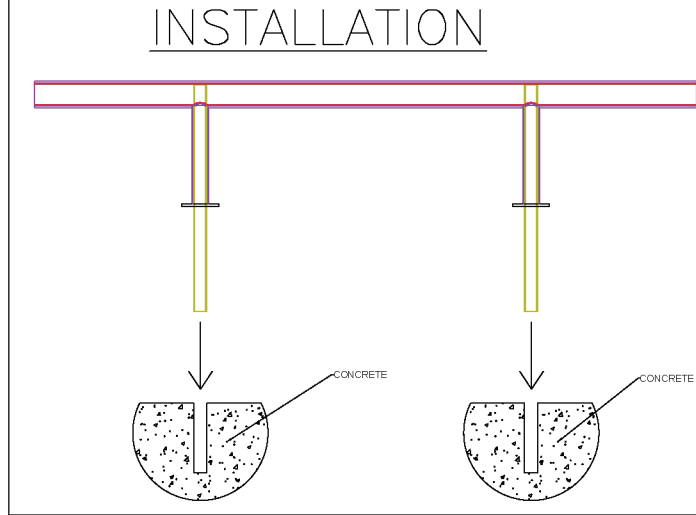
ONE LINE STANDARD GUARDRAIL SIZE CHART		
STANDARD LENGTH (A)	STANDARD HEIGHT (B)	POST TO POST LENGTH (C)
4'-0"	14.75", 27"	2'-0"
6'-0"	14.75", 27"	3'-0"
8'-0"	14.75", 27"	4'-0"
10'-0"	14.75", 27"	5'-0"
12'-0"	14.75", 27"	6'-0"
CUSTOM	CUSTOM - LOWER THAN 27"	(C)=(A)/2



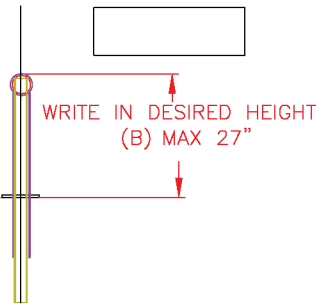
TOP VIEW



FRONT VIEW



EASY INSTALLATION:
FOR INSTALLATION CORE 6"-8"
INTO CONCRETE(TYPICALLY
DEPTH OF CONCRETE) WITH
2 7/8" DRILL BIT AND DROP IN
PRODUCT



SIDE VIEW

SPECIAL INSTRUCTIONS:

qty.

NO.	REVISIONS	DATE	APPROVED

PROJECT

CUSTOMER

DESCRIPTION
STANDARD GUARDRAIL CORE AND DROP

DRAWN BY: DP	APPROVED BY:	DATE:
PROJECT NO.:		SCALE:
TITLE:		DRAWING NO.:
MATERIAL: STEEL & HDPE PLASTIC		SHEET 1 OF 1