



## Bottle Troughs Consolidate Single Items & Improve Each Pick Efficiency

Slow-moving SKUs don't have to be a drag on productivity. Bottle pick rack consolidates and organizes single items to improve pick rates and accuracy.

Bottle pick troughs drop into standard pallet rack to create orderly SKU lanes that enable quick, accurate selection. The waterfall design flows over the front beam, and troughs are secured with a simple tek screw. Load bottles from the rear for FIFO rotation or load and pick from the front for LIFO. Rear bottles automatically advance to fill the pick slot keeping stock always at the ready.

Save your high-value "golden zone" pick area for faster movers while also eliminating long, single-SKU searches with Bottle Pick rack!



### Specifications:

- Rack depth - 42" or 48"
- Requires 3-3/4" tall beam
- Trough width sizes - 3", 3.5", 4", or 4.5"
- Material - 14 ga. pre-galvanized steel
- Optional tek screws to secure beam
- Safe, rounded-edge design

### Advantages:

- Consolidate slow-moving SKUs
- Maximize pick zone
- Ensure pick accuracy
- Support ergonomic pick positioning
- Load from the rear (LIFO) or front (FIFO)

## 3 Customizable Design Options

You have several effective options for integrating bottle pick rack into your pick area.



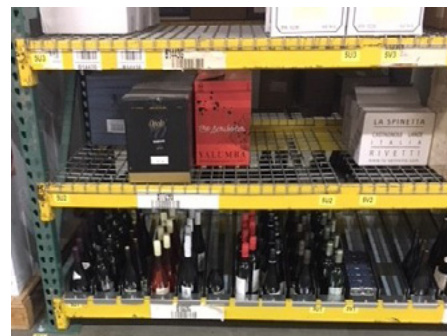
### 1. Stand-alone unit

Dedicated rack for inventory with a high number of SKUs.



### 2. Side-by-side with carton flow rack

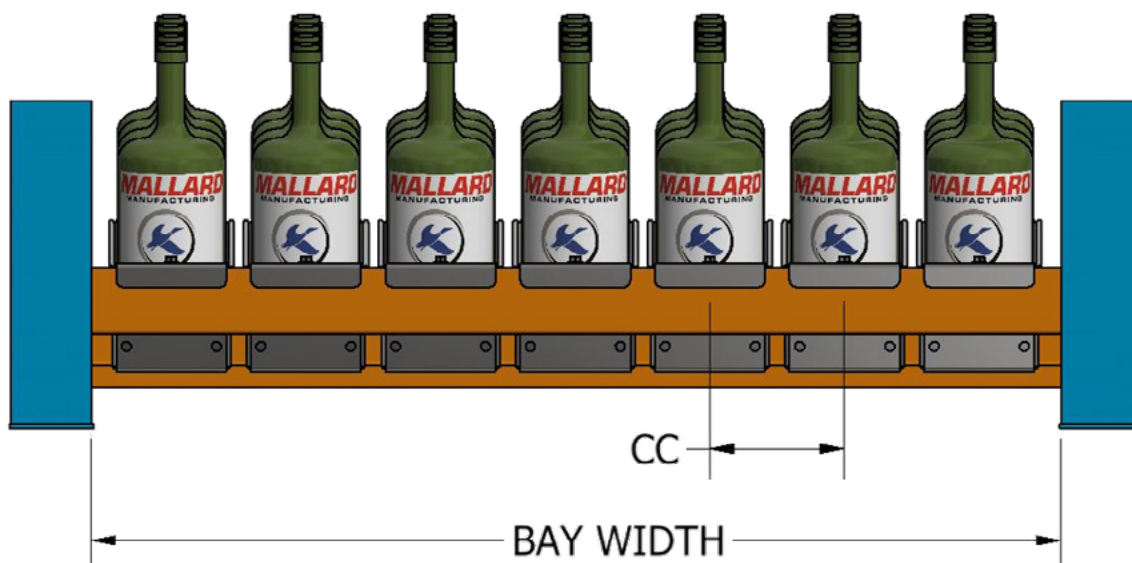
Alternate with carton flow for case and each pick at your fingertips.



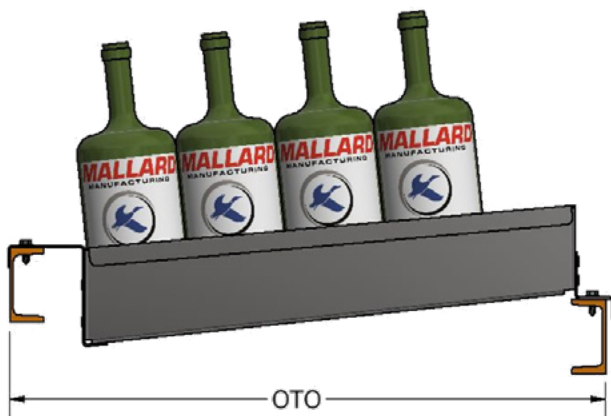
### 3. Shelf-by-shelf

Dedicate a lower shelf for single-pick SKUs using bottle pick. Use upper levels for full and open case picking of faster turn SKUs.

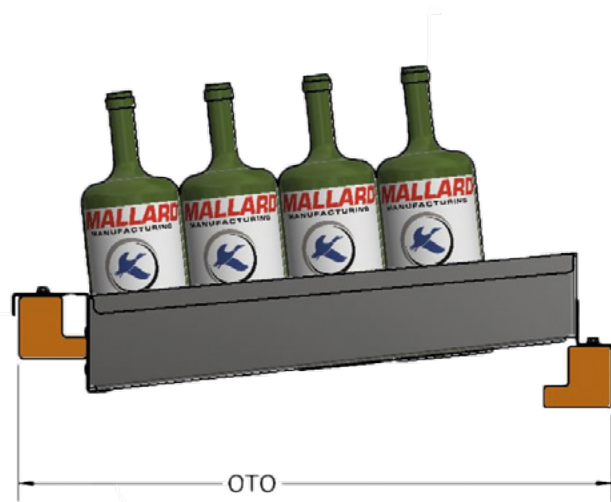
## Bottle Pick Rack Mounting Options



## Structural Beam Mount



## Roll-Formed Beam Mount



Wine Bottle Size	Overall Trough Width	Recommended QTY 120" Bay Width	Recommended QTY 96" Bay Width	Recommended QTY 48" Bay Width
2 3/8" to 3" (narrow)	3-1/2"	31 @ 3-13/16" CC	25 @ 3-13/16" CC	12 @ 3-7/8" CC
3" to 3-1/2" (mid)	4"	28 @ 4-1/4" CC	22 @ 4-5/16" CC	11 @ 4-5/16" CC
3 1/2" to 4-1/8" (wide)	4-5/8"	24 @ 4-7/8" CC	19 @ 5" CC	9 @ 5" CC

Contact your Mallard sales representative for design ideas and a quote. Visit [mallardmfg.com](http://mallardmfg.com) for more information on our economical and dependable gravity flow products.