



Mezzanine

Safeti-Gates, Inc.

Distributed by:
Cisco-Eagle
www.cisco-eagle.com
1-888-877-3861

Custom Designs

As an innovator in the design and manufacturing of safety gates for pallet drop areas on mezzanines and elevated work platforms in warehouses, distribution centers and manufacturing facilities, we help companies make their operations safer by providing fall protection with our safety gates. In fact, we created the original dual-gate safety gate, the Roly® Safety Gate and continue to create new designs.

Our engineers have been customizing specific solutions for a variety of applications for over 30 years. We know that no facility is the same and that safety gates in standard sizes or configurations may not work for your specific requirements. If one of our existing models will not fit your application, we will design a solution that works.

For example, a customer approached us with an immediate need to provide a safe environment for workers operating and transferring materials on loading dock scissor lifts. Our team worked to create a solution that met both their needs and industry standards - a custom self-closing gate system that was successfully installed to secure a number of loading dock areas.

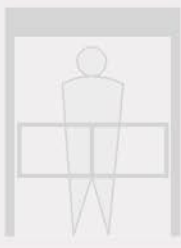
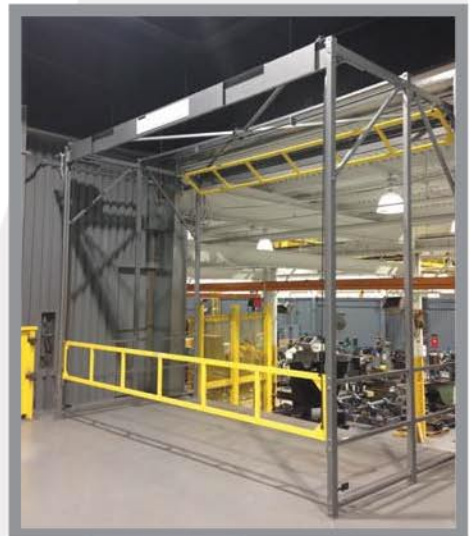
Another custom design was created to secure pallet drop areas in a multi-level pick module in which the gate couldn't extend into the picking aisle. We designed a Rack-Supported dual-gate system with a custom rear-side gate that compacted into the rack-upright when opened to free the aisle space for pickers on the platform. We've also designed safety gate systems to accommodate pallets that turned 360 degrees on a pallet turntable that had limited available height.

Contact us if you have a unique material handling or production application that needs to be secure and meet industry regulations without impeding operations.

We can help - challenge us!

GATE FEATURES:

- Designed to meet OSHA, ANSI and IBC standards
- Electro-polished stainless steel or powder-coated painted steel in any color
- Designs can attach to existing guardrails or racks
- Extra wide or deep options
- Power and technology integrations available



An **OPEN** and **SHUT** Case for Plant Mezzanine Safety