

Marking Tape Applicator



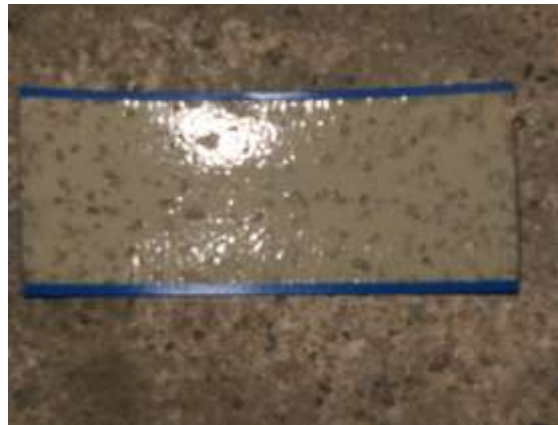
Use Instructions

Step 1

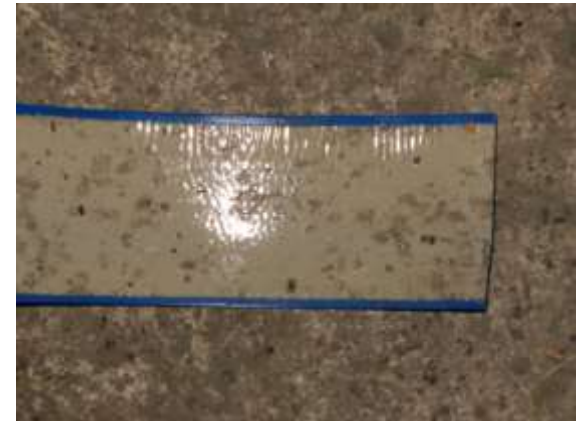
- Ensure the area which will have the stripe adhered to is clean and dry. The ambient temperature should also be above 55 F.
- How dirty is too dirty? A quick test is to apply a 6" sample to the desired area. Remove the sample from the floor and look at the adhesive side of the stripe. Some samples illustrations are shown below.



Sticky Side of aisle stripe prior to adhering to floor.



Sticky Side of aisle stripe after adhering to dirty floor: Floor is too dirty to get good adhesion.



Sticky side of aisle stripe after adhering to the same cleaned floor. Note good adhesion did not occur here. The floor this was applied to was over 100 yrs old. The concrete was very porous and flaking breaking down.

Step 1 Continued: Is your floor clean enough?



Sticky side of aisle stripe prior to adhering the sample to the floor.



Sticky side of aisle stripe after adhering sample to a new sealed concrete floor. Floor was only swept clean. Adhesion was good but not the best. Note the contaminants on the adhesive.



Sticky side of aisle stripe after adhering sample to the same new sealed floor. Floor was swept and scrubbed clean. Adhesion was very good. Difficulty was experience removing the sample from the floor. Note the reduction in contaminants on the adhesive.

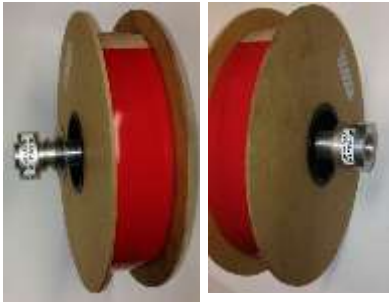
Step 2

- Establish line parallel to the desired aisle stripe location. Allow approximately 2" between desired location and the reference line.



Step 3

- Ensure the correct spacers and pins for the correct aisle stripe width are in the correct position.



Pin and Spacer set up 2" wide tape



Pin and Spacer set up for 3" Wide tape



No springs or spacers are required when installing the 4" wide tapes.

Step 4

- Position the applicator so the edge of the applicator wheel is close to the desired starting point of the aisle stripe.

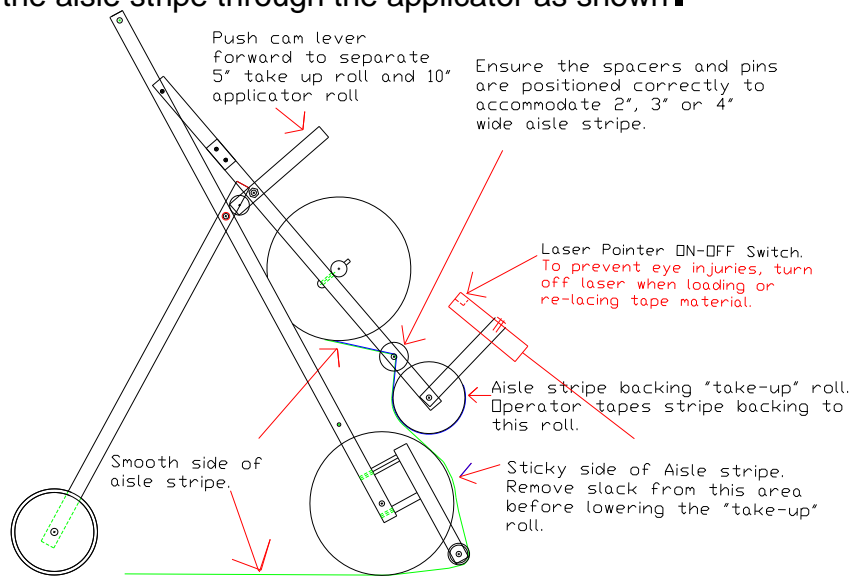
- Push the cam take-up roller lever forward. This separates the 5" applicator take up roller from the 10" applicator roller.

Separate the 5" take up roller and 10" roll



Step 5

- Thread the aisle stripe through the applicator as shown.



- Remove the backing from the bottom side of the aisle stripe and tape it to the 5" diameter applicator roller.

Thread Aisle Stripe Through Applicator

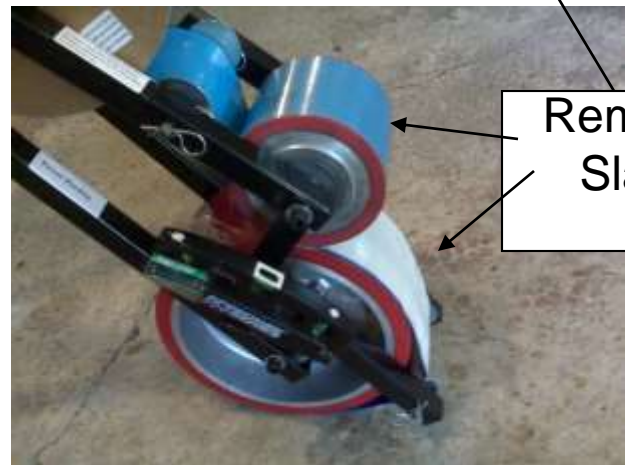


Tape backing to 5" take up roll

Step 6

- Stick the desired starting point of the aisle stripe to the floor.
- Remove the slack from the stripe by rotating the supply stripe back onto the 100' roll and rotating the 5" diameter roller so the stripe backing is in tension.

Stick aisle stripe to floor at start location



Remove slack in aisle stripe and take up roll

Step 7

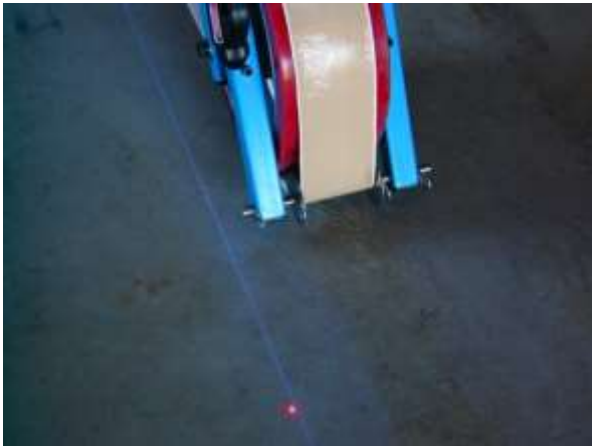
- Pull the take up roll cam lever toward the operator. This will engage the 5" diameter roll with the 10" diameter roll.
- **Do Not Forget this Step.**

Engage the 5" take up roller with the 10" roller



Step 8

- Turn on the laser pointer and position it so it is pointing to the reference line. Secure the laser pointer to this position



Step 9

Push the applicator forward keeping the laser pointer shining on the reference line.

Step 10

After each roll, separate the 2 rollers by pushing the cam handle forward. Remove and discard the liner from the take-up roller.