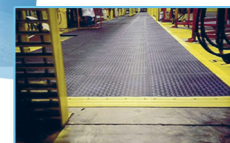


ESD MATTA
Industrial and Commercial Safety Surfacing



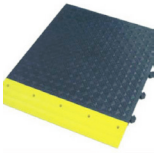
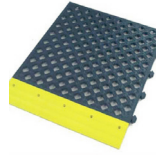

Comfort Diamond Shield ESD (Electrostatic Dissipative) Matta safety surfacing provides a safe, ergonomic standing work surface. This system minimizes health hazards, such as foot and leg muscle strain, back pain, and the fatigue associated with standing on hard surfaces for long periods.

- Heavy-Duty Industrial performance - durable and robust
- Compression columns (144) deliver proven ergonomic benefits
- Unique five point interlock design for reliable resistivity
- Assemble and disassemble without tools
- Grit Matta is suitable for use in temperatures ranging from -22° F to 140° F.
- Available in open and closed configurations
- Environmentally responsible - comprised of recycled materials
- Guaranteed ESD protection of sensitive electrical components



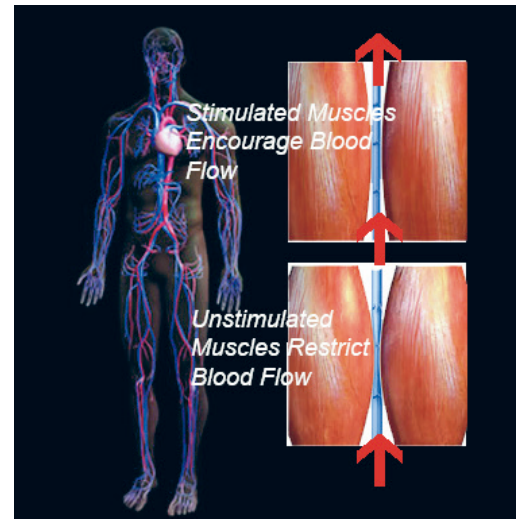
ESD MATTA

Industrial and Commercial Safety Surfacing

	Model #	Description
	SDMCB1	<ul style="list-style-type: none"> • Superior anti-slip properties • Safety ramp edging - available in black or high visibility yellow • Mitered corners for safe smooth transition • Compression column understructure system accommodates most commercial cabling and wiring
	SDMCB2	<ul style="list-style-type: none"> • Easy to clean and low maintenance - sweep, vacuum, wash with 30% distilled water & 20% isopropyl alcohol in a spray bottle • Serves as an insulation barrier against cold, damp floors • Excellent sound dampening qualities
	IAGPSS008	<ul style="list-style-type: none"> • ESD Grounding Plate • Additional technical details available

Ergonomically Speaking: Oxygenated blood is pumped by the heart, through arteries, around our bodies which uses the oxygen as fuel. The blood then returns, via the veins, to our heart and lungs for “refueling” and the process begins again with re-circulation of oxygenated blood through the arteries. Blood pressure and the normal contracting and relaxing of muscles around veins as we move, facilitates the return journey of blood through the one way valve system in veins. This process can be inhibited when we have to stand on a hard surface or our movement is restricted for prolonged periods.

Matta Ergonomic Flooring is designed to help counter this negative effect. Compression columns on the underside of each Work Matta perform like springs - compressing to a comfortable degree of cushion. They also create a slightly uneven standing surface that promotes muscle stimulation in the lower extremities. This activity increases more efficient return of blood to the heart and lungs.



Product	Dimensions	Thickness	Weight	Color	Material	Shore Hardness	Temperature Variation	Interlocking Connection	Average Coefficient of Friction
SDMCB1	20"x20"	1"	7lbs.	BLACK	PVC	70	-22 TO 140 F	5 Lug	30 WET/ 48 DRY
SDMCB2	20"x20"	1"	7lbs.	BLACK	PVC	70	-22 TO 140 F	5 Lug	31 WET / 49 DRY

ADA Compliance ASTM F 1951-99	Ultra Violet Stabilized	Fire Exposure Test ASTM E108
78	Yes	PASSED
78	Yes	PASSED

* Installation by qualified personnel is required - review product warranty prior to installation

Milagon[®]
Healthcare • Industrial
A Division of NSS Enterprises, Inc.

Phone: 800.889.4049
Fax: 419.578.2274
3115 Frenchmens Road
Toledo, Ohio 43607-2958
WWW.Milagon.com

Distributed
by: