

Drum Cradles

Model 31
Tipping Lever



Model 40
Drum Cradle

Drum Cradle Trucks

Rugged angle iron construction. 3" (7.6 cm) MORTUF polyolefin wheels. Shown with optional Model 31 tipping lever. Handle 55-gallon steel drum.

Capacity: 700 Lb. (318 kg).

Model 40 is for a 55-gallon steel drum.

Model 40-30 is for a 30-gallon steel drum.

Tipping Lever

Model 31 Tipping Lever is for one person loading of heavy drum onto Model 40. Built with 40" (101.6 cm) steel tubing and malleable iron double hook. Shown above with Model 40.

Model 36 is an easy to load drum cradle with a built-in retractable tipping lever. It has heavy steel welded construction with four 3" MORTUF polyolefin wheels.



Model 36 is for a 55-gallon steel drum.

Capacity: 500 Lb. (227 kg).

Model 46 is specifically designed to handle your 15-gallon steel drum. Has four 3" polyolefin wheels. Rock-over loading eliminates manual lifting.

Capacity: 500 Lb.



Model 32 Drum Upender

Provides leverage to move a horizontal drum to vertical position.

IMPORTANT: NOT designed to safely lower an upright drum, to horizontal position.



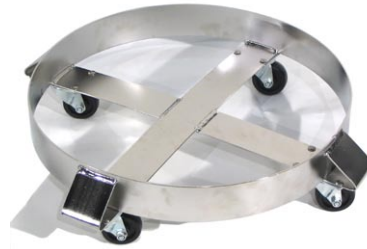
Round Drum Dollies

Morse Round Drum Dollies have a wide stance base has four 3" (7.62 cm) MORTUF polyolefin swivel casters for easy moving of your heavy drum. Dollies for 55-gallon (208 liter) drum handle a steel, plastic or fiber drum up to 23" (58.4 cm) outside diameter at the bottom.

Model
14



Model
14-SS



Model 14 55-Gallon Round Drum Dolly.

Model 14-30 30-Gallon Round Drum Dolly.

Model 14-SS Stainless steel drum dolly is made of type 304 stainless steel. Fasteners are stainless steel. Casters are bright-finished steel with MORTUF polyolefin wheels.

Model 14-SSC Stainless steel drum dolly with stainless steel casters & polypropylene wheels.

Square Drum Dollies

Morse Square Drum Dollies have a flat deck with four rounded corners turned up to hold the drum in position. Useful if your drum has a spigot low on the side of the drum. They roll on four 3" (7.62 cm) MORTUF polyolefin swivel casters.

Model
34



Model
34-5



Dollies for 55-gallon (208 liter) drum handle a steel, plastic or fiber drum up to 24" (61 cm) outside diameter at the bottom.

Options for any Morse Drum Dolly

Option 4959I-P Stainless steel casters with 3" polypropylene wheels on any Morse drum dolly.

Option 5666I-P 3" Swivel casters with brake.

Clamp+GO™ Dolly Handle Video



Use care when pushing the dolly to maintain control and avoid tipping when rolling on rough or uneven floors. Lateral force at the top of the drum shifts over 70% of the weight to the front dolly wheels. This can make the dolly difficult to control, and potentially hazardous without warning - even topple over, especially if the dolly wheels hit an obstruction, a hole in the floor, or while descending a slope.

Decrease the risk of this happening by attaching the patented model # 24 **Clamp+Go™ Dolly Handle** (sold separately) to the drum dolly. You then pull from the bottom of the drum to move it around, with weight far more evenly distributed on all dolly wheels. You have greater control, and significantly reduce risk of tipping.

The **Clamp+Go™** can be used with round drum dollies of various sizes. Move the quick-pin to adjust for 2", 2.5" or 3" (5.08, 6.35 or 7.62 cm) tall dolly sidewall. One **Clamp+Go™** works with all Morse round drum dollies, and with many other brands.



Patented Design

Drum Cradles				
Model #	Description	Capacity	Domestic Ship Weight	Domestic Ship Dimensions
40	Drum Cradle TRuck for 55-gallon (210 liter) drum	700 Lb. (318 kg)	32 Lb. (14.5 kg)	L34" W21" H4" (86 x 53 x 10 cm)
40-30	Drum Cradle Truck for 30-gallon (114 liter) drum	700 Lb. (318 kg)	31 Lb. (14 kg)	L33" W21" H4" (84 x 53 x 10 cm)
31	Tipping Lever for Model 40 or 40-30	-	5 Lb. (2.3 kg)	L41" W15" H7" (104 x 38 x 18 cm)
36	Drum Cradle Truck for 55-gallon (210 liter) drum	500 Lb. (227 kg)	30 Lb. (14 kg)	L29" W19" H30" (74 x 48 x 76 cm)
36-SS	Stainless Steel Drum Cradle Truck for 55-gallon (210 liter) drum	500 Lb. (227 kg)	30 Lb. (14 kg)	L29" W19" H30" (74 x 48 x 76 cm)
46	Drum Cradle Truck for 15-gallon (57 liter) drum	500 Lb. (227 kg)	20 Lb. (9 kg)	L24" W19" H18" (61 x 48 x 46 cm)
Drum Upender				
32	Drum Upender	500 Lb. (227 kg)	12 Lb. (5.44 kg)	L41" W15" H7" (104 x 38 x 18 cm)

Drum Dollies					
Model #	Description	For Diameter	Capacity	Domestic Ship Weight	Domestic Ship Dimensions
14	Round Dolly for 55-gallon drum, steel casters with MORTUF polyolefin wheels	Up to 23" (58.4 cm)	1000 Lb. (454 kg)	22 Lb. (10 kg)	L25" W25" H5" (64 x 64 x 13 cm)
14M	Round Dolly with spark resistant parts, for 55-gallon drum, steel casters with MORTUF polyolefin wheels	Up to 23" (58.4 cm)	1000 Lb. (454 kg)	22 Lb. (10 kg)	L25" W25" H5" (64 x 64 x 13 cm)
14-SS	Round Dolly, type 304 stainless steel, for 55-gallon drum, steel casters with MORTUF polyolefin wheels	Up to 23" (58.4 cm)	1000 Lb. (454 kg)	22 Lb. (10 kg)	L25" W25" H5" (64 x 64 x 13 cm)
14-SSC	Round Dolly, type 304 stainless steel, for 55-gallon drum, stainless steel casters with polypropylene wheels	Up to 23" (58.4 cm)	1000 Lb. (454 kg)	22 Lb. (10 kg)	L25" W25" H5" (64 x 64 x 13 cm)
14-30	Round Dolly for 30-gallon drum, steel casters with MORTUF polyolefin wheels	Up to 20" (50.8 cm)	1000 Lb. (454 kg)	19 Lb. (9 kg)	L25" W25" H5" (64 x 64 x 13 cm)
14-30SS	Round Dolly, type 304 stainless steel, for 30-gallon drum, steel casters with MORTUF polyolefin wheels	Up to 20" (50.8 cm)	1000 Lb. (454 kg)	19 Lb. (9 kg)	L25" W25" H5" (64 x 64 x 13 cm)
34	Square Dolly for 55-gallon drum, steel casters with MORTUF polyolefin wheels	Up to 24" (61 cm)	1000 Lb. (454 kg)	21 Lb. (9.5 kg)	L21" W21" H4" (53 x 53 x 10 cm)
34-SS	Square Dolly, type 304 stainless steel, for 55-gallon drum, steel casters with MORTUF polyolefin wheels	Up to 24" (61 cm)	1000 Lb. (454 kg)	21 Lb. (9.5 kg)	L21" W21" H4" (53 x 53 x 10 cm)
34-30	Square Dolly for 30-gallon drum, steel casters with MORTUF polyolefin wheels	Up to 19.75" (50.2 cm)	1000 Lb. (454 kg)	17 Lb. (8 kg)	L21" W21" H4" (53 x 53 x 10 cm)
34-30SS	Square Dolly, type 304 stainless steel, for 30-gallon drum, steel casters with MORTUF polyolefin wheels	Up to 19.75" (50.2 cm)	1000 Lb. (454 kg)	17 Lb. (8 kg)	L21" W21" H4" (53 x 53 x 10 cm)
34-5	Square Dolly for 5-gallon pail, steel casters with MORTUF polyolefin wheels	12.5" (31.75 cm)	200 Lb. (91 kg)	10 Lb. (4.5 kg)	L21" W21" H4" (53 x 53 x 10 cm)
34-5SS	Square Dolly, type 304 stainless steel, for 5-gallon pail, steel casters with MORTUF polyolefin wheels	12.5" (31.75 cm)	200 Lb. (91 kg)	10 Lb. (4.5 kg)	L21" W21" H4" (53 x 53 x 10 cm)

Options for Drum Dollies	
Option #	Description
4959i-P	Stainless steel casters with polypropylene wheels on any Morse drum dolly.
5666i-P	3" Swivel casters with brake
24	Clamp+Go Dolly Handle

Please contact your Morse dealer