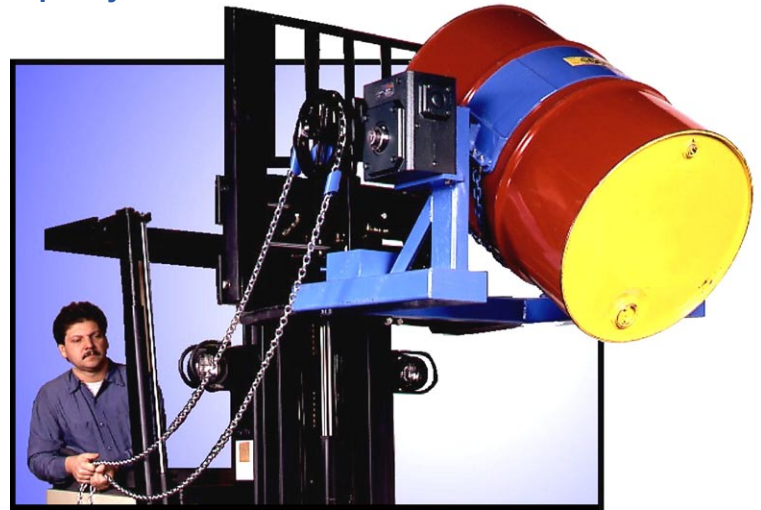
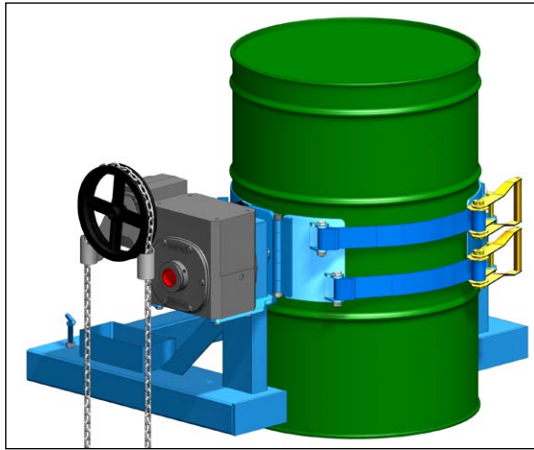


### Extra Heavy-Duty Forklift-Karrier

#### Extra Heavy-Duty Forklift-Karrier - 2,000 Lb. (907 kg) Capacity

- 360° drum tilt control in both directions
- Hand operated geared tilt with fully enclosed gear box
- Quick, sure drum handling with your forklift
- Save time, reduce waste, improve productivity
- Controlled high-level pouring



#### Steps to use Extra Heavy-Duty Forklift-Karriers

1. Drive your truck forks into the Extra Heavy-Duty Forklift-Karrier's fork pockets, then dismount and screw down safety locks to grip the forks.
2. Drive to a drum at ground level, so that the drum holder meets the center of your drum.
3. Secure your drum in the drum holder between drum ribs... no tools are needed.
4. Raise your forklift carriage and the secured drum, then travel to the dumping location.
5. To turn the drum without leaving your forklift seat, pull the chain loop for complete control of drum tilting.
6. Lower drum to the floor, then release ratchet straps.
7. Loosen screw down safety locks, then back forks out of fork pockets.

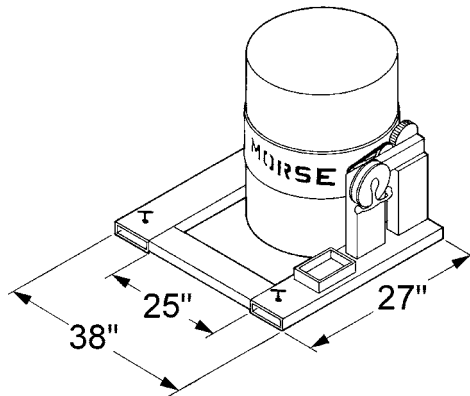
Manual drum tilt is controlled with a 20' (6 m) pull chain loop hanging 10' (3 m) below the chain wheel. There is enough resistance in the enclosed gear box to automatically stop and hold the drum tilt angle. Hand wheel tilt control option is also available.

Extra-heavy-duty construction with steel tube framework, large shafts and bearings offer long life in tough service. An oil filled, worm gear speed reducer provides 150:1 gear reduction for fine control when tipping heavy drums.

The drum holder of Model 285A-GR has an 9" (22.9 cm) wide metal band with two straps and ratchets to secure your 22.5" (57.15 cm) diameter steel drum.

Full Drum Capacity 2,000 Lb. (907 kg),  
Half-full drum capacity 1,000 Lb. (454 kg).

Half-full rating is an indication of capacity for tilting an unbalanced, bottom-heavy drum. A partially full drum with unbalanced and shifting load is harder to tilt than a full drum.



#### Dimensions

Fork pocket openings are 6.5" wide x 2.5" high (16.5 x 6.35 cm). Fork pockets are 26.5" (67.3 cm) deep. Inside width between forks must be at least 25" (63.5 cm). Domestic ship dimensions: L 45" W 33" H 23" (114 x 84 x 58 cm). Class 70.

NOTE: Standard loop of pull chain extends approximately ten feet beyond the chain wheel. Custom lengths are available.

Model #	Description	Unit Weight	Domestic Ship Weight	Domestic Ship Dimensions
285A-GR	Extra-Heavy-Duty Forklift-Karrier, drum holder with load binders	244 Lb. (111 kg)	280 Lb. (127 kg)	L45" W33" H23" (114 x 84 x 58.5 cm)



[morsedrum.com](http://morsedrum.com)



[service@morsedrum.com](mailto:service@morsedrum.com)



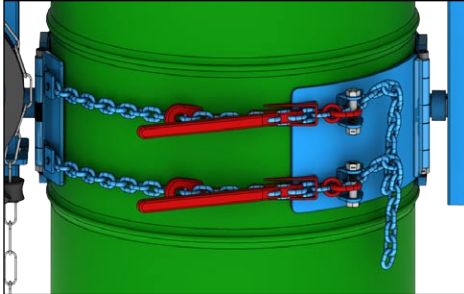
(315) 437-8475



727 West Manlius St.  
East Syracuse, NY, 13057 USA

**Factory Installed Options**

**Option # 6214i-P**



**Option X03-285GR**  
Two Load Binders to secure drum in holder.

**Option # X02-185GR**



**Option X03-285GR**  
Hand Crank to turn drum. Replaces the standard chain wheel.

**Option # X03-185GR**



**Option X03-285GR**  
8" (25.4 cm) Hand Wheel with speed handle. Replaces the standard chain wheel with hand wheel to turn the drum.

MADE  
IN  
USA

Factory Installed Options on New Model 285A-GR Forklift-Karrier		
Option #	Description	Ship Weight Adder
<b>6214i-P</b>	Factory Installed Load Binders to secure drum	
<b>X02-285GR</b>	Hand Crank Crank to turn drum (replaces chain wheel and pull chain)	-11 Lb. (-5 kg)
<b>X03-285GR</b>	8" Hand Wheel to turn drum (replaces chain wheel and pull chain)	-8 Lb. (-3.6 kg)

**Accessories**

**Diameter Adaptor # 55/30-19GR**



**Model 55/30-19GR** Diameter Adaptor. Simply insert this Diameter Adaptor into the drum holder to handle your 19" (48.3 cm) diameter 30-gallon (114 liter) steel drum. Remove the Adaptor to handle your 55-gallon (210 liter) steel drum. Quickly and easily install this Diameter Adaptor in the drum holder. Simply lift it back out to handle a 55-gallon steel drum.

**Asymmetric Drum Cones**



Asymmetric Drum Cones. Shown with Slide Gate (Kit SG) to start and stop material flow.

**Stainless Steel Asymmetric Drum Cones**



Stainless Steel Asymmetric Drum Cones. Shown with Iris Valve (Kit IV) to control product flow.