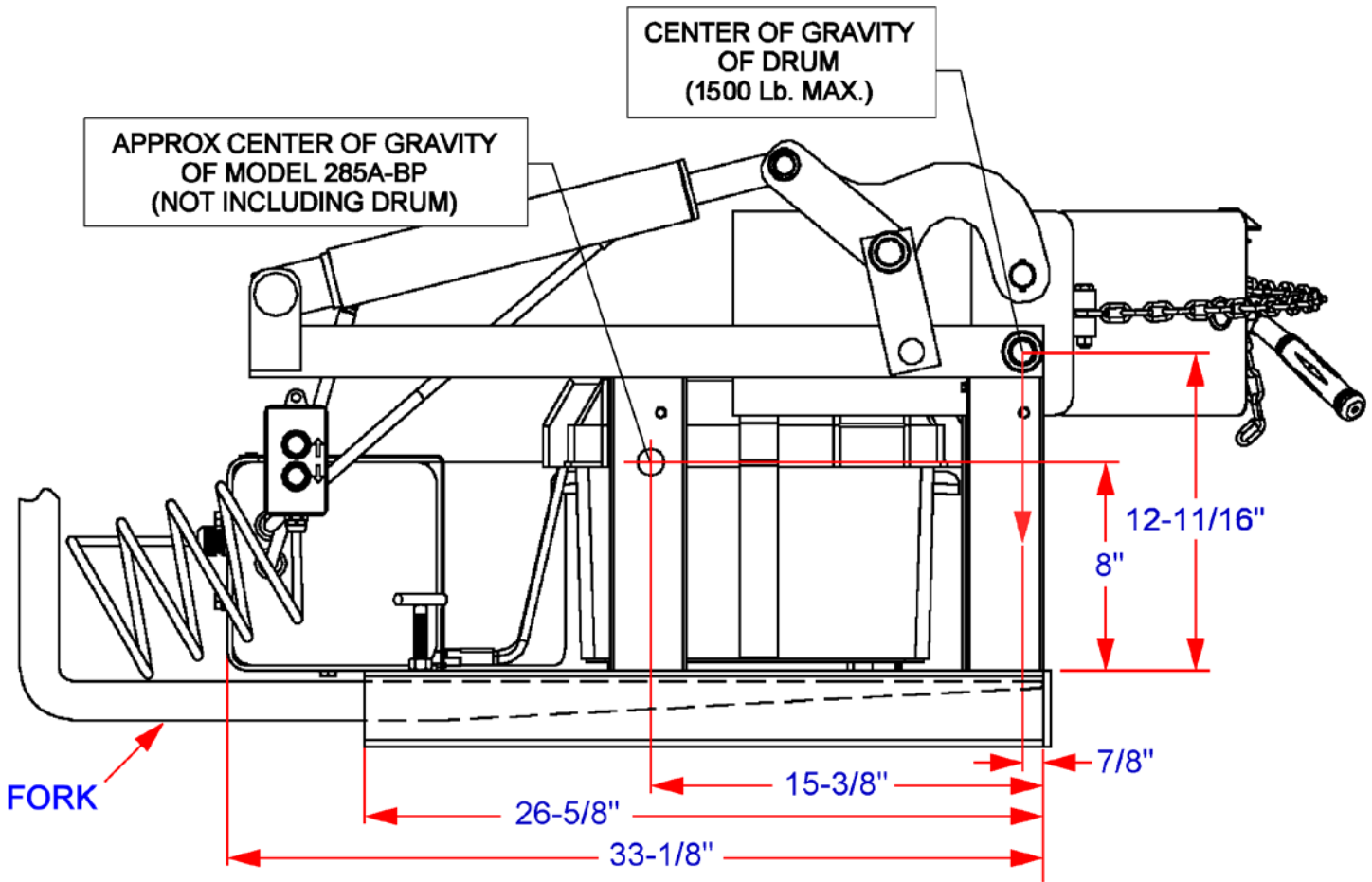


Lost Load Capacity with Morse Model 285A-BP
 Forklift-Karrier with Battery-Powered Drum Tilt
 with Serial number 1202 to ____ (MMYY)

Center of Gravity Dimensions for Calculating Lost Load on Equipment



DIMENSIONS ARE MEASURED FROM INSIDE OF FORK TUBE END. THIS WILL GIVE A FIXED POINT TO WHICH LOST LOAD DATA CAN BE DETERMINED. (FORKS MUST BE TOUCHING THIS FORK TUBE END.)

MODEL: 285A-BP
 NET WEIGHT: 295 Lb.