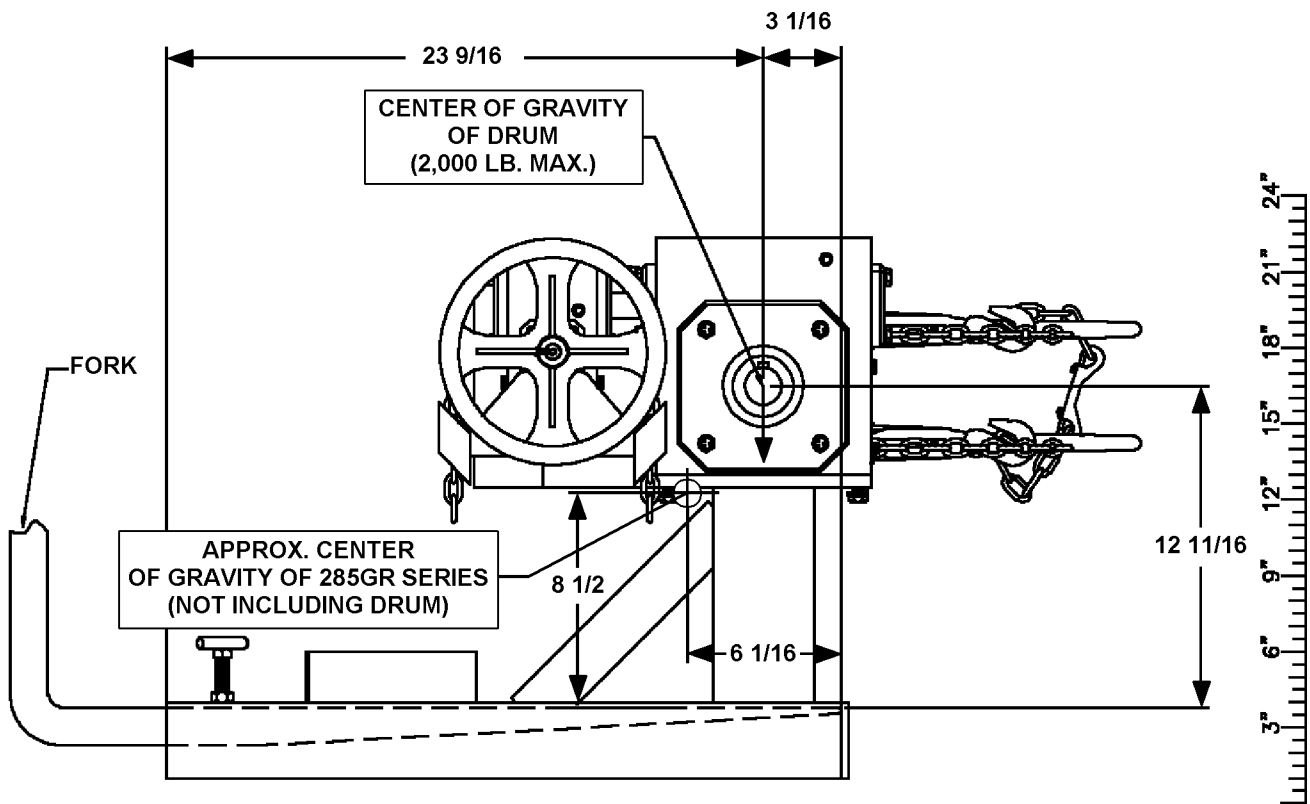


Morse 285GR Series Extra Heavy-Duty Forklift-Karriers with 2,000 Lb. Capacity

Serial Number 0793 to ____ (MMYY)

- Model 285A-GR
- Model 285G-GR
- Model 285GM-GR

CENTER OF GRAVITY DIMENSIONS FOR CALCULATING LOST LOAD ON EQUIPMENT



DIMENSIONS ARE MEASURED FROM INSIDE OF FORK TUBE END. THIS WILL GIVE A FIXED POINT TO WHICH LOST LOAD DATA CAN BE DETERMINED. (FORKS MUST BE TOUCHING THIS FORK TUBE END.)

Model	Net Weight
285A-GR	244 Lb.
285G-GR	265 Lb.
285GM-GR	265 Lb.

OPTION	SUBTRACT FROM MODEL
X02	-11 LB.
X03	-9 LB.