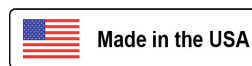




JOB:  
ITEM:  
QTY:



## Mobile Security Cabinet

### SPECIFICATIONS

**MATERIAL:** Hi-tensile, corrosion resistant, rust proof, primary extruded aluminum, Type 6463-T5 alloy and 5052 H32-34 sheet aluminum.

**CONSTRUCTION:** All heli-arc welded.

**SHELVES:** Unit equipped with three solid shelves that are constructed out of .080" aluminum sheet adjustable on 2" centers.

**BASE:** 1/8" Sheet base, reinforced with 1-1/4" x 1-1/2" x .070" wall tube; 4 x 4 1/2" x 3/8" thick pre-tapped caster plates are welded to the base.

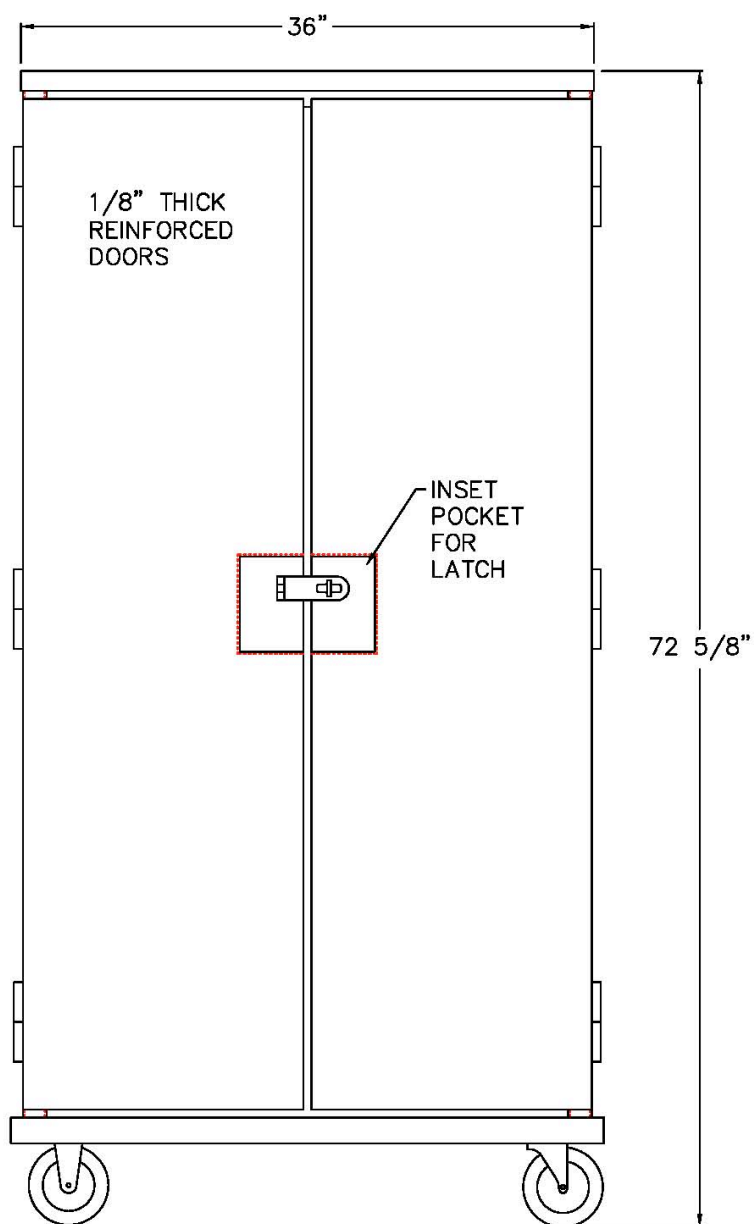
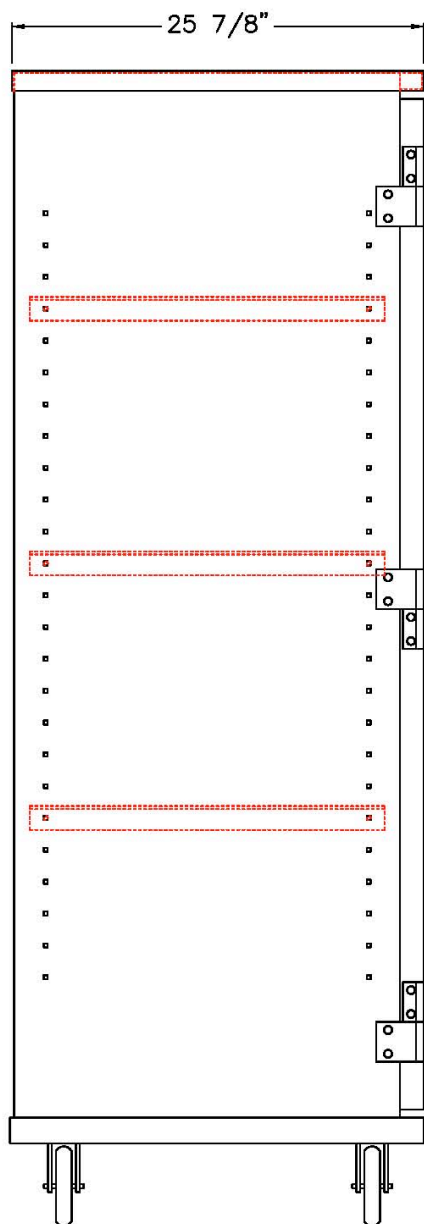
**DOORS & SIDES:** Constructed of 1/8" Sheet, Door is reinforced with tube. Doors have lockable latch to increase security.

**CASTERS:** Four 5" diameter casters, 2" wide with polyurethane tire; two swivel and two rigid.



Phone: 800-255-0104  
Fax: 877-877-7687  
[www.newageindustrial.com](http://www.newageindustrial.com)  
[sales@newageindustrial.com](mailto:sales@newageindustrial.com)

New Age Industrial reserves the right to modify or make changes at any time without notice to materials and specifications.



**MODEL #99551**

Model No.	Size-W	Size-H	Size-D
99551	36"	72 5/8"	25 7/8"



**NEWAGE**  
INDUSTRIAL  
NEWAGE

Phone: 800-255-0104  
 Fax: 877-877-7687  
[www.newageindustrial.com](http://www.newageindustrial.com)  
[sales@newageindustrial.com](mailto:sales@newageindustrial.com)

New Age Industrial reserves the right to modify or make changes at any time without notice to materials and specifications.