



New Age Industrial Corp., Inc.

PO Box 520 • 16788 US Hwy 36 • Norton, Kansas 67654

Phone: 800-255-0104 • Fax: (877)-877-7687 • www.NewAgeIndustrial.com

Job: _____

Item: _____

Quantity: _____

#99814 - Enclosed Security Cabinet

- Provides safe, lockable security of valuable and/or dangerous materials.
 - Ideal "emergency box" for schools
 - Use for chemical storage
- Equipped with double doors with a stainless steel hasp and replaceable stainless steel hinges.
- All welded aluminum construction.
- Five-Year Guarantee against material defects and workmanship.
- Lifetime Guarantee against rust and corrosion.



#99814



Interior T-Bar Shelves

This information is for general sales and engineering use only. New Age Industrial reserves the right to modify or make changes at any time without notice to materials and specifications.



Distributed by:



New Age Industrial Corp., Inc.

PO Box 520 • 16788 US Hwy 36 • Norton, Kansas 67654

Phone: 800-255-0104 • Fax: (877)-877-7687 • www.NewAgeIndustrial.com

Job: _____

Item: _____

Quantity: _____

#99814 - Enclosed Security Cabinet

MATERIAL

- Hi-tensile, corrosion resistant, rust proof, primary extruded aluminum, Type 6463-T5 alloy and 5052 H32 sheet aluminum.

CONSTRUCTION

- All heli-arc welded.

SHELVES

- Unit equipped with three T-Bar shelves, spaced 14-1/2" apart.

BASE

- 1/8" Sheet base, reinforced with 1-1/4" x 1-1/2" x .070" wall tube; 4 x 4-1/2" x 3/8" thick pre-tapped caster plates are welded to the base.

- Equipped with a full perimeter bumper

DOORS & SIDES

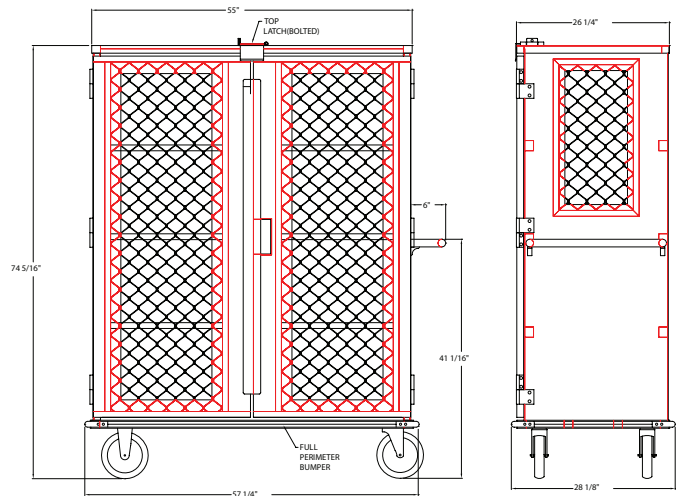
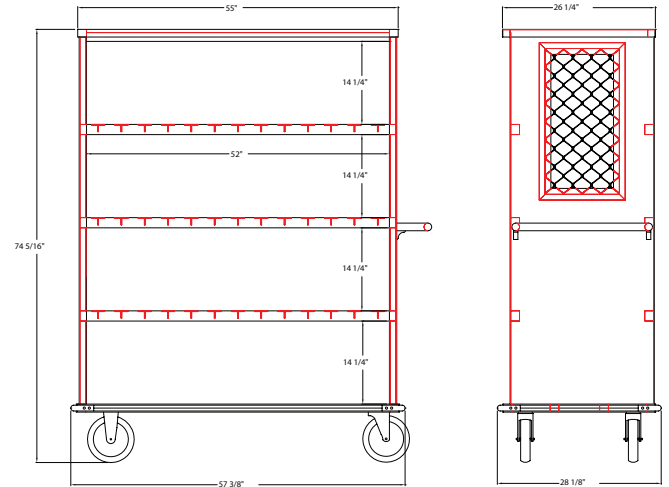
- 1/8" Sheet with cutouts for amplimesh material.

CASTERS

- Equipped with four 8" plate polyurethane type casters - one rigid(#C527), one rigid w/ brake (#C528), one swivel (#C526), one swivel w/ brake (#421).

GUARANTEES

- Five-Year Guarantee against material defects and workmanship.
- Lifetime Guarantee against rust and corrosion.



#99814

| Model No. | Size W-H-D | Interior Shelves | Shelf Size | Clear Space | Lock Type | Ship Wt. |
|-----------|-----------------------------|------------------|---------------|-------------|---------------------|----------|
| 99814 | 57-1/4" x 74-1/2" x 28-1/4" | 4 | 24-1/2" x 52" | 14-1/4" | Top Latch with Hasp | 376# |

Equipped with four 8" plate polyurethane type casters - one rigid(#C527), one rigid w/ brake (#C528), one swivel (#C526), one swivel w/ brake (#421).

This information is for general sales and engineering use only. New Age Industrial reserves the right to modify or make changes at any time without notice to materials and specifications.



Distributed by: