

Job: \_\_\_\_\_

Item: \_\_\_\_\_

Quantity: \_\_\_\_\_

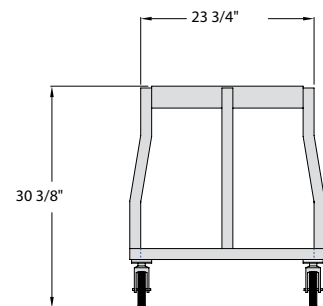
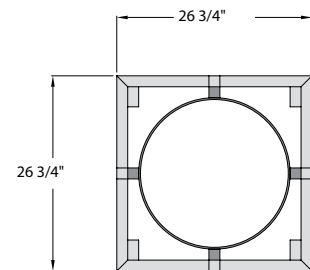
## Mixer Bowl Dolly

Designed to make rolling heavy mixing bowls in and out of place an easy task, this rust proof unit is ideal for the kitchen/prep room atmosphere.

- Frame is constructed of 1½" square tube with four 1½" square tubing legs welded to a ¼" x 3" strap to hold the bowl in place.
- Equipped with four 5" platform type swivel casters.
- Five-Year Guarantee against material defects and workmanship.
- Lifetime Guarantee against rust and corrosion.
- NSF Certified.



95636



95636

Model No.	Size W-H-D	Ring Diameter	Quart Size	Ship Lbs.	List Price
<b>Mixer Bowl Dolly - NSF Approved.</b>					
95636	26¾" x 30⅜" x 26¾"	20¼" I.D.	80	34	\$ 610
98736	24¾" x 30⅜" x 24¾"	18¼" I.D.	60	28	\$ 871
98737	29⅜" x 30⅜" x 29⅜"	22⅞" I.D.	140	29	\$ 892

**Note: Unit Heights Do Not Include Bowls**

**Information is based on Hobart® mixing bowl sizes.**

Four 5" plate type casters— two swivel (#C450) two w/ brake (#C455).

**Options: "B"** - see page catalog for details.

This information is for general sales and engineering use only. New Age Industrial reserves the right to modify or make changes at any time without notice to materials and specifications.



Distributed by: