

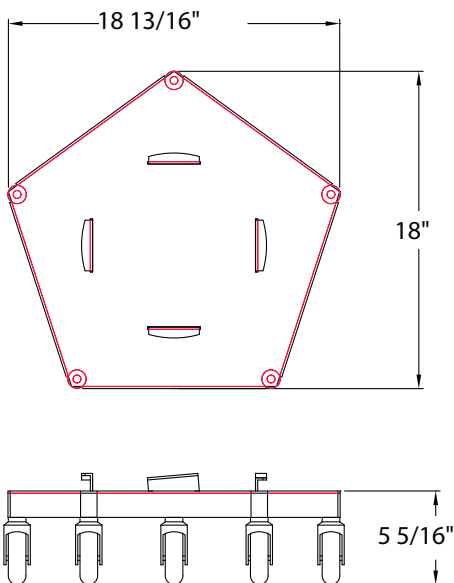
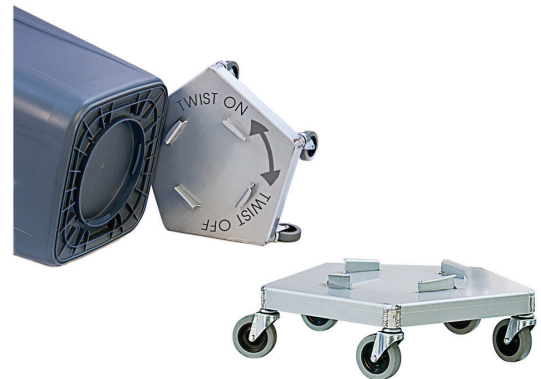
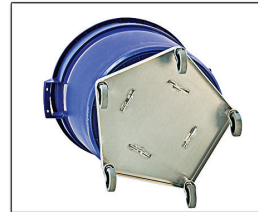
Job: _____

Item: _____

Quantity: _____

#50125 - Trash Dolly

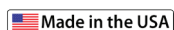
- Accommodates the following trash cans with reinforced recessed base:
 - Continental "Huskee"® and Rubbermaid "Brute"® 20, 32, 44 and 55 gallon **ROUND** containers as well as the 28 and 40 gallon **SQUARE** containers.
- Casters are mounted at the outside perimeter which offers much more stability.
- This simple 5 caster design makes the caster footprint larger without enlarging the overall unit footprint.
- Constructed of heavy duty, fully welded aluminum.
- Four, heavy duty tabs secure containers in place.
- Equipped with (5) 3" x 1" stem type swivel casters with a 125lb. weight capacity each.
- Five-Year Guarantee against material defects and workmanship.
- Lifetime Guarantee against rust and corrosion.



Model No.	Size W-H-D	Wt. Cap.	Ship Lbs
50125	18 ³ / ₄ " x 7" x 18 ³ / ₄ "	300 lbs.	8

Five 3" stem type casters (#C405).

This information is for general sales and engineering use only. New Age Industrial reserves the right to modify or make changes at any time without notice to materials and specifications.



Distributed by: