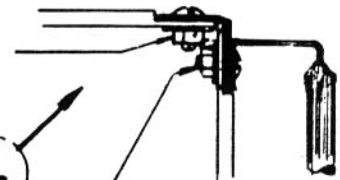
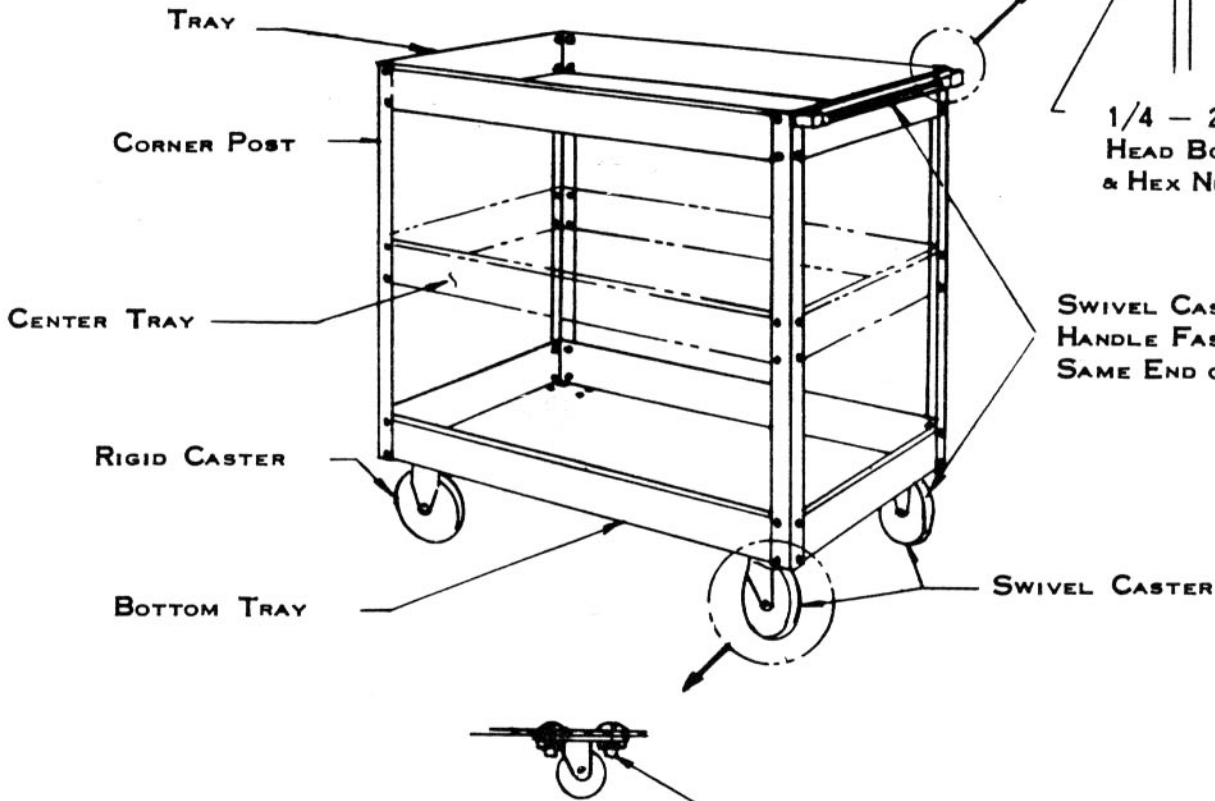


1/4 - 20 x 3/8 SLOTTED HEAD BOLT,
LOCK WASHER & HEX NUT (30) REQ'D.



1/4 - 20 x 1/2 SLOTTED
HEAD BOLT, LOCK WASHER
& HEX NUT (2) REQ'D.



5/16 - 18 x 1/2 SLOTTED HEAD BOLT,
AND SPEED NUT (16) REQ'D.

TOP OR CENTER TRAY CAN BE REVERSED TO PROVIDE
A FLUSH SURFACE IF DRAWERS ARE NOT USED

ASSEMBLE AS SHOWN AND TIGHTEN ALL NUTS FOR RIGIDITY

ASSEMBLY INSTRUCTIONS FOR SERVICE CART

PENCO PRODUCTS, INC.

OAKS, PENNSYLVANIA



HARDWARE KIT NO.

31239

REV 4/86

PART NO. 08353