

GLIDE-OUT 100

WHEN DO YOU NEED A GLIDE-OUT?

- Floor space is too restricted to access racking with forklift
- Workers are leaning too far into existing shelving to hand pick heavy items
- Machine down time is excessive between die/tool changes
- Tooling, dies or material is too valuable to handle with forklift

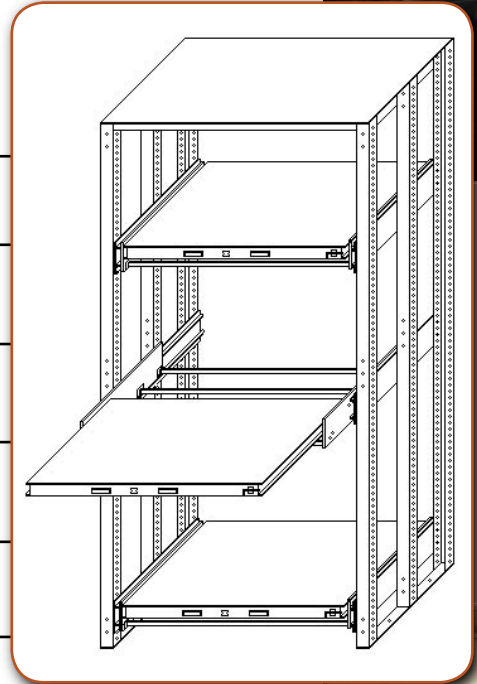


- Stock parts are not visible due to deep shelving/racking
- Rack or shelf space is not being fully utilized
- Vertical storage space is wasted due to forklift
- Aisle way for a forklift takes up valuable storage/manufacturing floor space.

PRODUCTION STORAGE SYSTEMS

GLIDE-OUT 100

INDUSTRY	APPLICATION
AUTOMOTIVE	Stamping dies, test motors, assembly components, tool crib components
AIRCRAFT	Turbine components, engine components, dies
ENERGY	Valves, pumps, hydraulic pumps, production tooling, compressor parts, precision drill heads, breaker boxes
PLUMBING & HEATING	Generators, valves, pumps, fans
PHARMACEUTICAL	Pumps, valves
CHEMICAL	Paints, coatings, fluids, cylinder gas, adhesives
PLASTICS	Injection molds, castings
TOOL & DIE	Machine parts, heavy tooling
STEEL FABRICATION	Specialty metals, pressbrake tooling, coil storage
PRINTING	Printing plates, printing cylinders



GLIDE-OUT 100

CAN YOU AFFORD **NOT** TO HAVE A GLIDE-OUT?

SAVE. . . MACHINE DOWN TIME by placing a glide-out next to production machinery

MAN HOURS by eliminating a forklift driver in die, mold or tooling change over

AISE WAY SPACE by eliminating needed forklift turning radius used in stationary racking

MANUFACTURING FLOOR SPACE by utilizing vertical space with a multi-level glide-out

EMPLOYEES FROM INJURY by reducing the need for bending or extracting heavy items from stationary shelves

SEE FULL GLIDE-OUT JUSTIFICATION AT
www.rack-eng.com/glidejustif



GLIDE-OUT 100

Safety and ergonomics are extremely important. We designed the Glide-Out 100 utilizing ergonomic research provided by "People At Work - Volume 1", to meet or exceed safety and ergonomic standards.

Rack Engineering Division's Glide-Out 100 can solve even the most unique production storage problems with ergonomics and safety in mind.

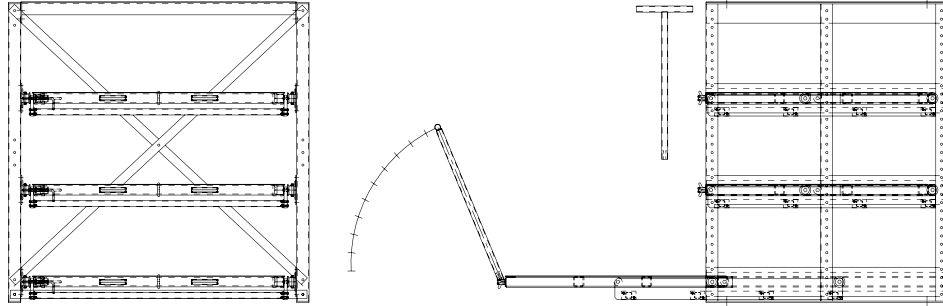


Utilizing an overhead crane or hoist capitalizes on the ergonomic benefits of a Glide-out 100

Adjustable height to accommodate a larger range of workers



GLIDE-OUT 100



GLIDE-OUT 100

COMMON CONFIGURATIONS		
*1000# CAPACITY	*2000# CAPACITY	*3000# CAPACITY
4MD24-100-2	4HD24-100-2	4SD24-100-2
4MD2436-100-2	4HD2436-100-2	4SD2436-100-2
4MD36-100-2	4HD36-100-2	4SD36-100-2
4MD3648-100-2	4HD3648-100-2	4SD3648-100-2
4MD4248-100-2	4HD4248-100-2	4SD4248-100-2
4MD48-100-2	4HD48-100-2	4SD48-100-2
4MD4860-100-2	4HD4860-100-2	4SD4860-100-2
4MD60-100-2	4HD60-100-2	4SD60-100-2
4MD6072-100-2	4HD6072-100-2	4SD6072-100-2
5MD24-100-3	5HD24-100-3	5SD24-100-3
5MD2436-100-3	5HD2436-100-3	5SD2436-100-3
5MD36-100-3	5HD36-100-3	5SD36-100-2
5MD3648-100-3	5HD3648-100-3	5SD3648-100-3
5MD4248-100-3	5HD4248-100-3	5SD4248-100-3
5MD48-100-3	5HD48-100-3	5SD48-100-3
5MD4860-100-3	5HD4860-100-3	5SD4860-100-3
5MD60-100-3	5HD60-100-3	5SD60-100-3
5MD6072-100-3	5HD6072-100-3	5SD6072-100-3
6MD24-100-3	6HD24-100-3	6SD24-100-3
6MD2436-100-3	6HD2436-100-3	6SD2436-100-3
6MD36-100-3	6HD36-100-3	6SD36-100-3
6MD3648-100-3	6HD3648-100-3	6SD3648-100-3
6MD4248-100-3	6HD4248-100-3	6SD4248-100-3
6MD48-100-3	6HD48-100-3	6SD48-100-3
6MD4860-100-3	6HD4860-100-3	6SD4860-100-3
6MD60-100-3	6HD60-100-3	6SD60-100-3
6MD6072-100-3	6HD6072-100-3	6SD6072-100-3
7MD24-100-4	7HD24-100-4	7SD24-100-4
7MD2436-100-4	7HD2436-100-4	7SD2436-100-4
7MD36-100-4	7HD36-100-4	7SD36-100-4
7MD3648-100-4	7HD3648-100-4	7SD3648-100-4
7MD4248-100-4	7HD4248-100-4	7SD4248-100-4
7MD48-100-4	7HD48-100-4	7SD48-100-4
7MD4860-100-4	7HD4860-100-4	7SD4860-100-4
7MD60-100-4	7HD60-100-4	7SD60-100-4
7MD6072-100-4	7HD6072-100-4	7SD6072-100-4

*add-on units available

GLIDE-OUT MODEL NUMBER EXAMPLE:

5 HD - 3648 - 100 - 3 S

5' (4', 5', 6', 7', 8', 9', 10')

HD = 2000# Capacity
Also available in MD = 1000# Capacity
SD = 3000# Capacity

36" Shelf depth (available in depths 24" to 60" in 1" increments)

48" Shelf width (available in widths 24" to 120" in 1" increments)

S = Starter A = Add-on

Quantity of roll-out shelves

100% Extension roll-out