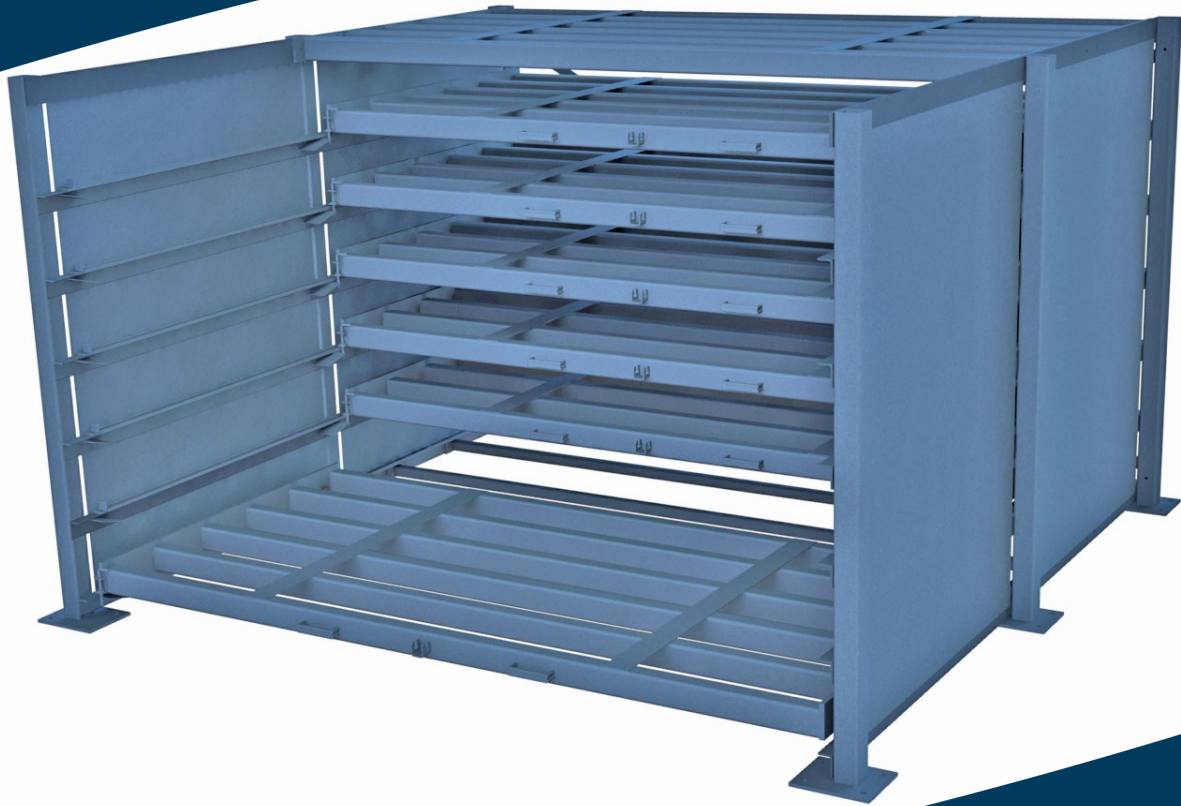
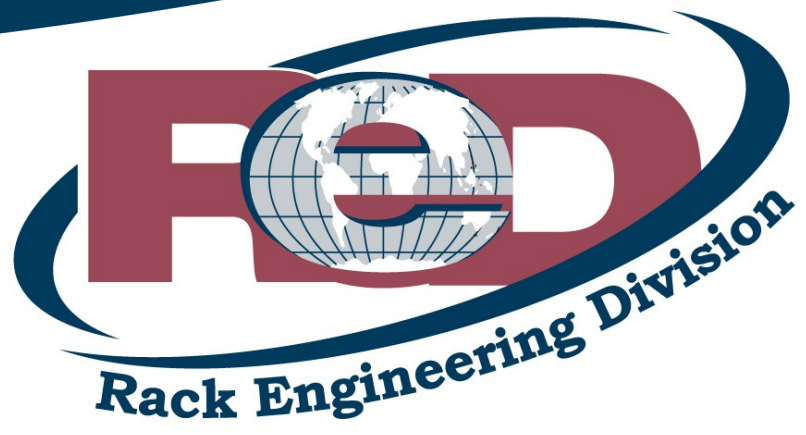


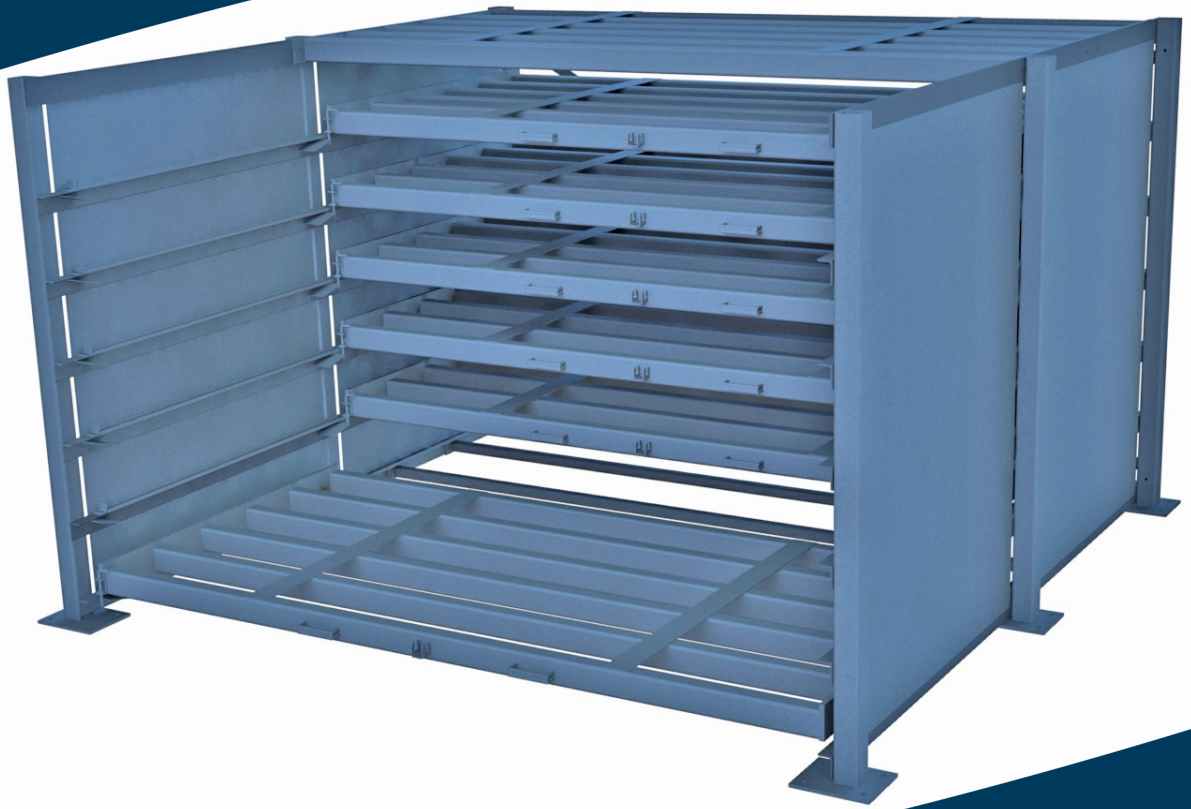
Sheetmaster: Stationary & Folding Installation & Assembly Manual



Toll Free: 800-245-6890
P.O. Box 205
Alpena, Michigan 49707
phone: 989-358-7050
fax: 989-358-7055
www.rack-eng.com

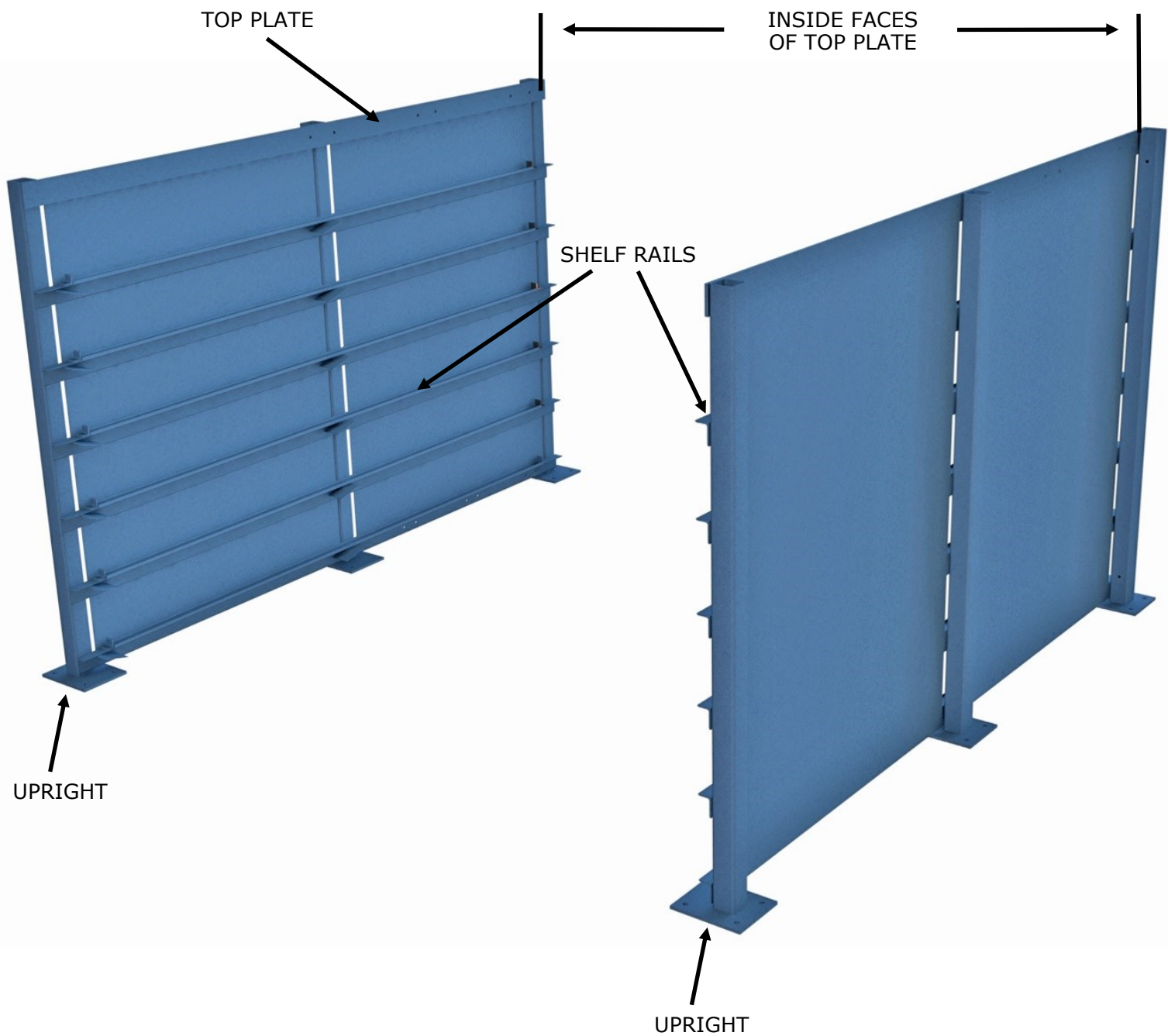


Sheetmaster Stationary



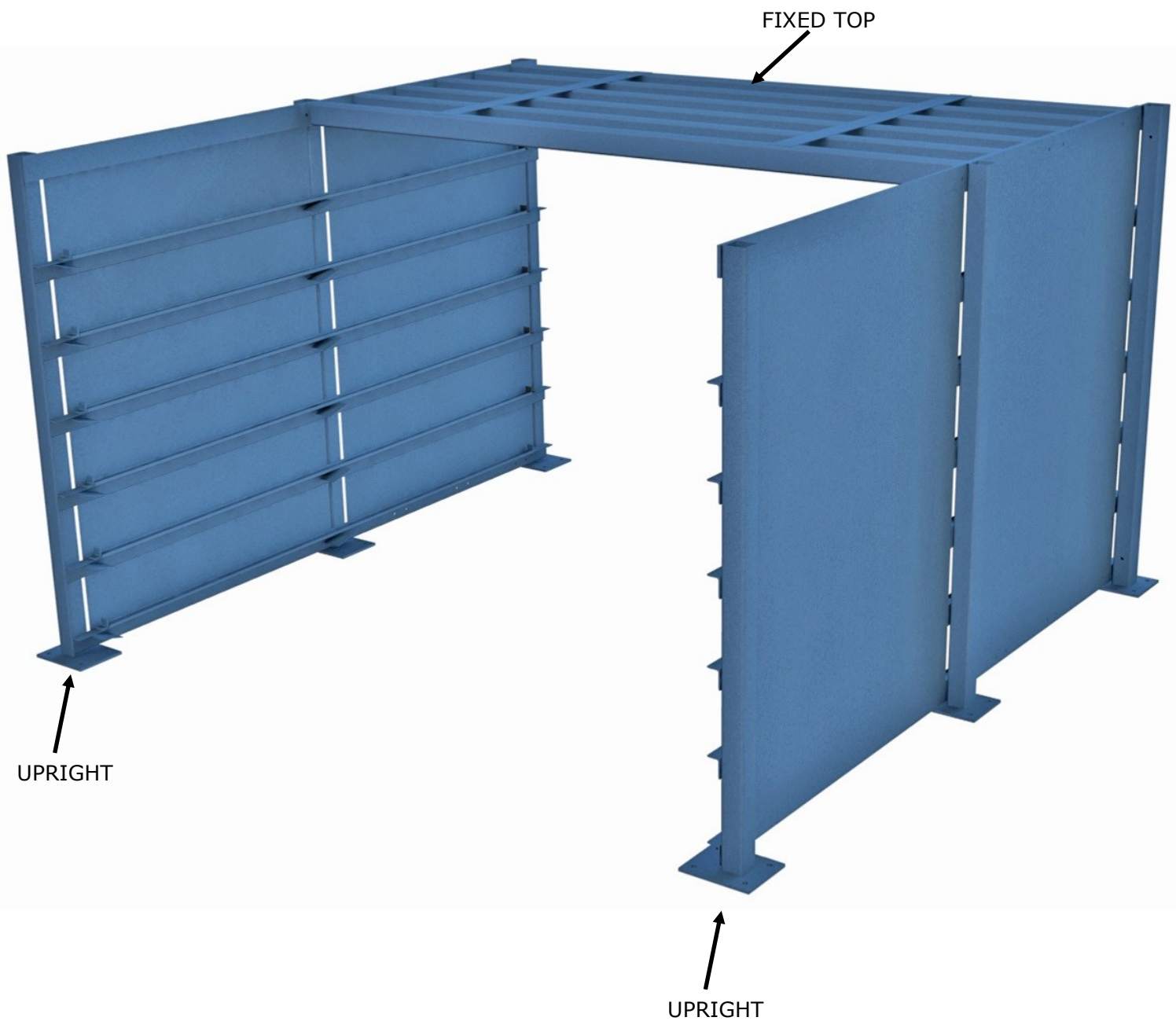
SETUP AND INSTALLATION INSTRUCTIONS

1. Stand uprights up so shelf rails are facing each other. Uprights are to be set parallel to each other. Measure width of fixed top (shown in step 2). Place uprights the same distance apart as the width of fixed top measuring from the inside faces of the upright top plate.



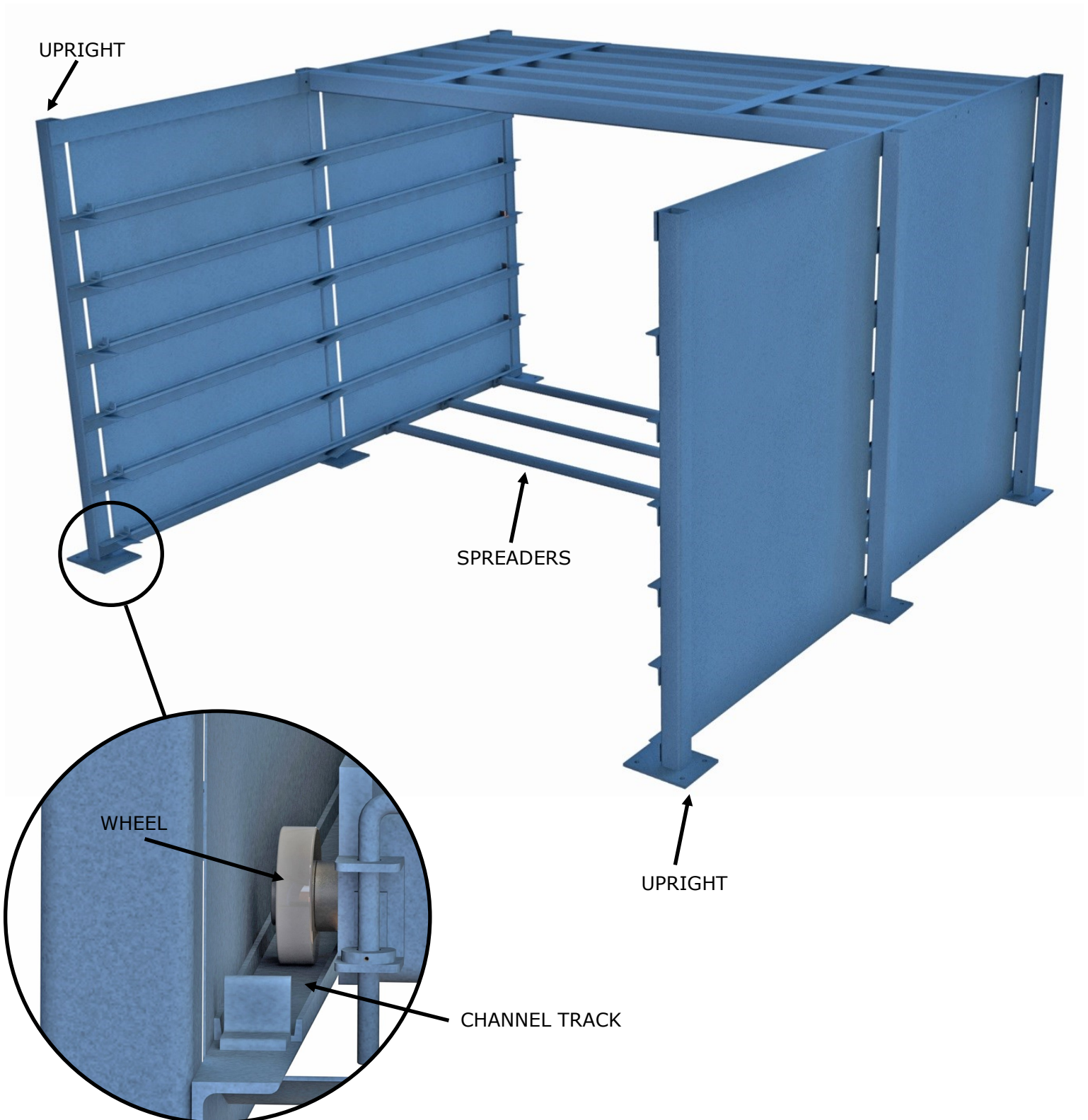
SETUP AND INSTALLATION INSTRUCTIONS

2. Fasten fixed top into place between standing uprights using holes provided. Fixed top should be flush with upright top plate for proper top shelf clearance.



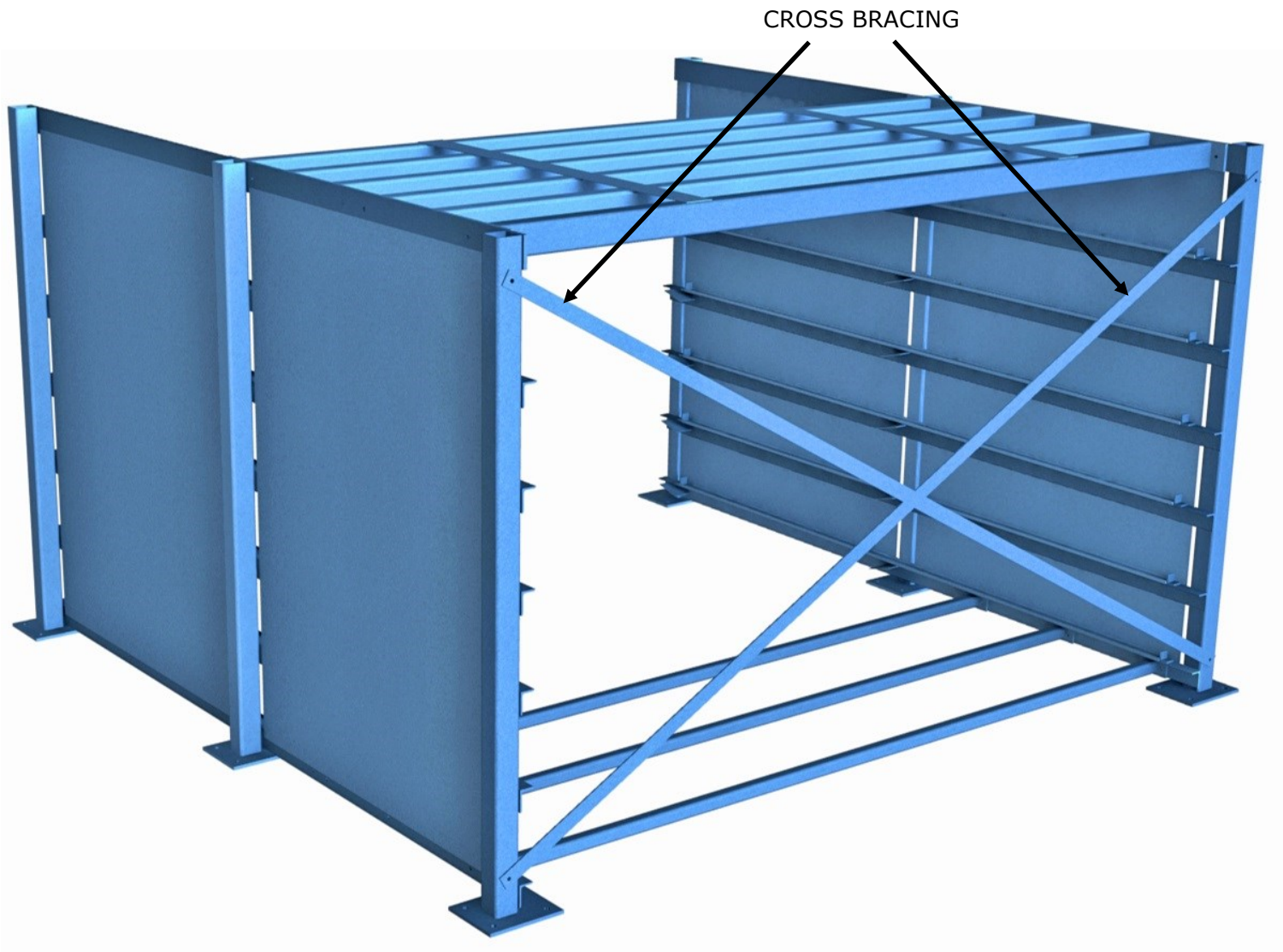
SETUP AND INSTALLATION INSTRUCTIONS

3. Fasten spreaders to bottom of standing uprights using holes provided in uprights.



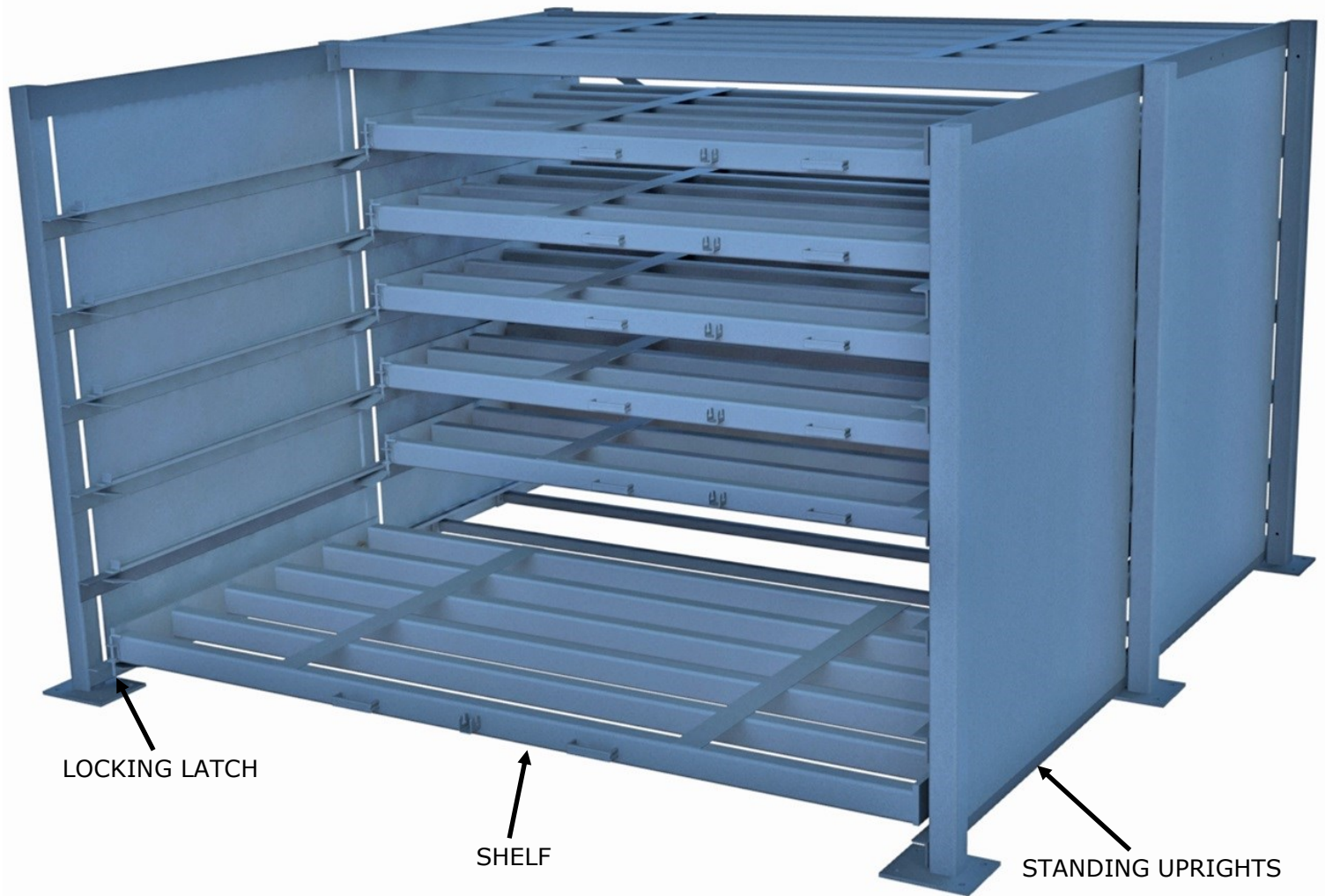
SETUP AND INSTALLATION INSTRUCTIONS

4. Bolt cross bracing to rear of sheetmaster using holes in rear post of upright. See view below for proper placement.



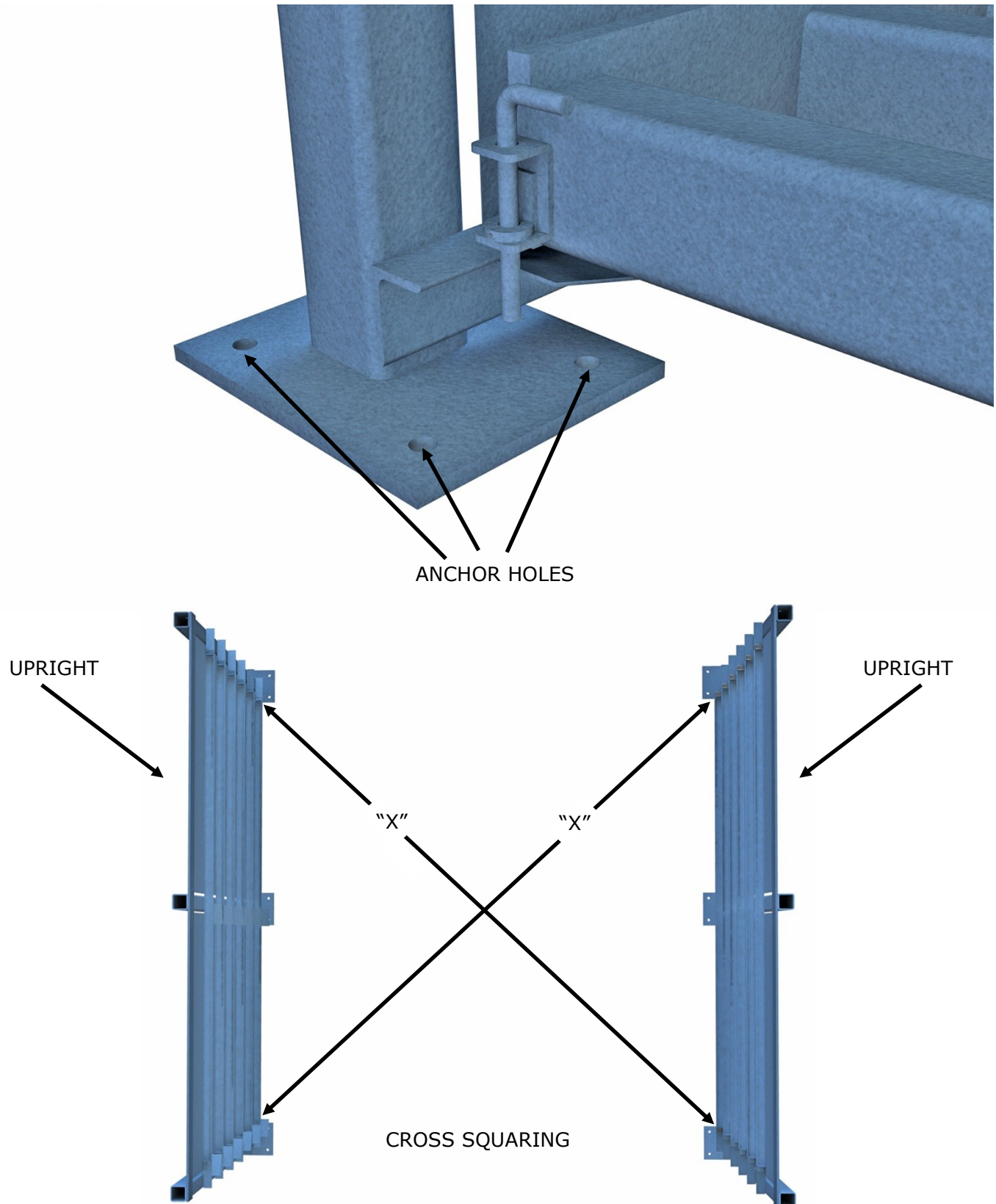
SETUP AND INSTALLATION INSTRUCTIONS

5. Install shelves by placing wheels located at each end of shelf onto the channel tracks on standing uprights. Ensure locking latch is located on the left side.



SETUP AND INSTALLATION INSTRUCTIONS

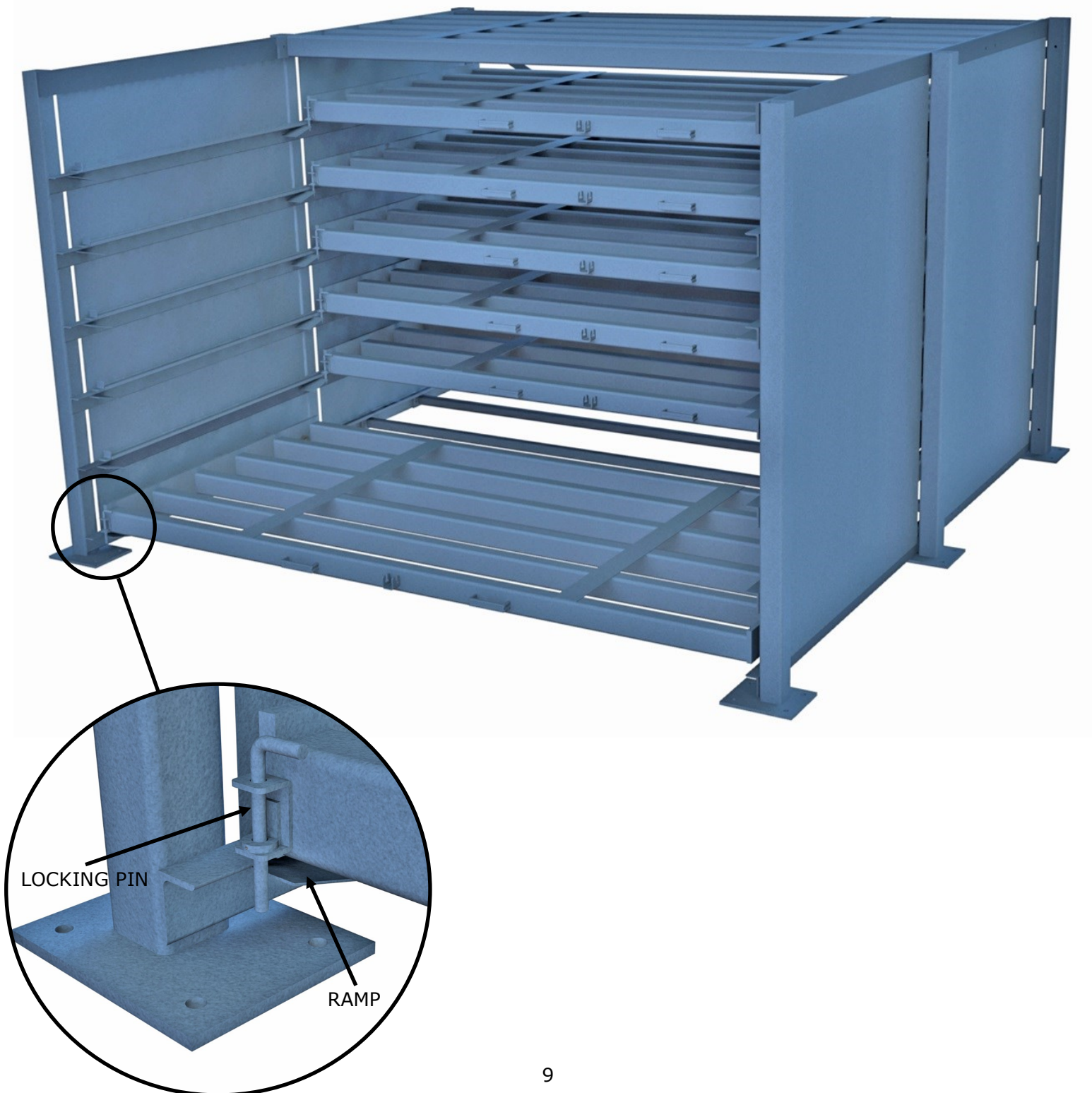
6. Complete a final cross square check to ensure that uprights are square to each other. ("X" dimensions should be equal) Level and anchor sheetmaster upright/frame to floor using the holes provided in the bottom pad of the uprights.



SETUP AND INSTALLATION INSTRUCTIONS

7. Once sheetmaster is properly anchored to the floor, pull out each shelf one by one to ensure they roll freely. Check the locking pin latches to ensure the pin travels and drops past the ramp (as shown in zoomed in view). Once all shelves have been checked, installation is complete.

NOTE: ONLY ONE SHELF SHOULD BE PULLED OUT AT A TIME.

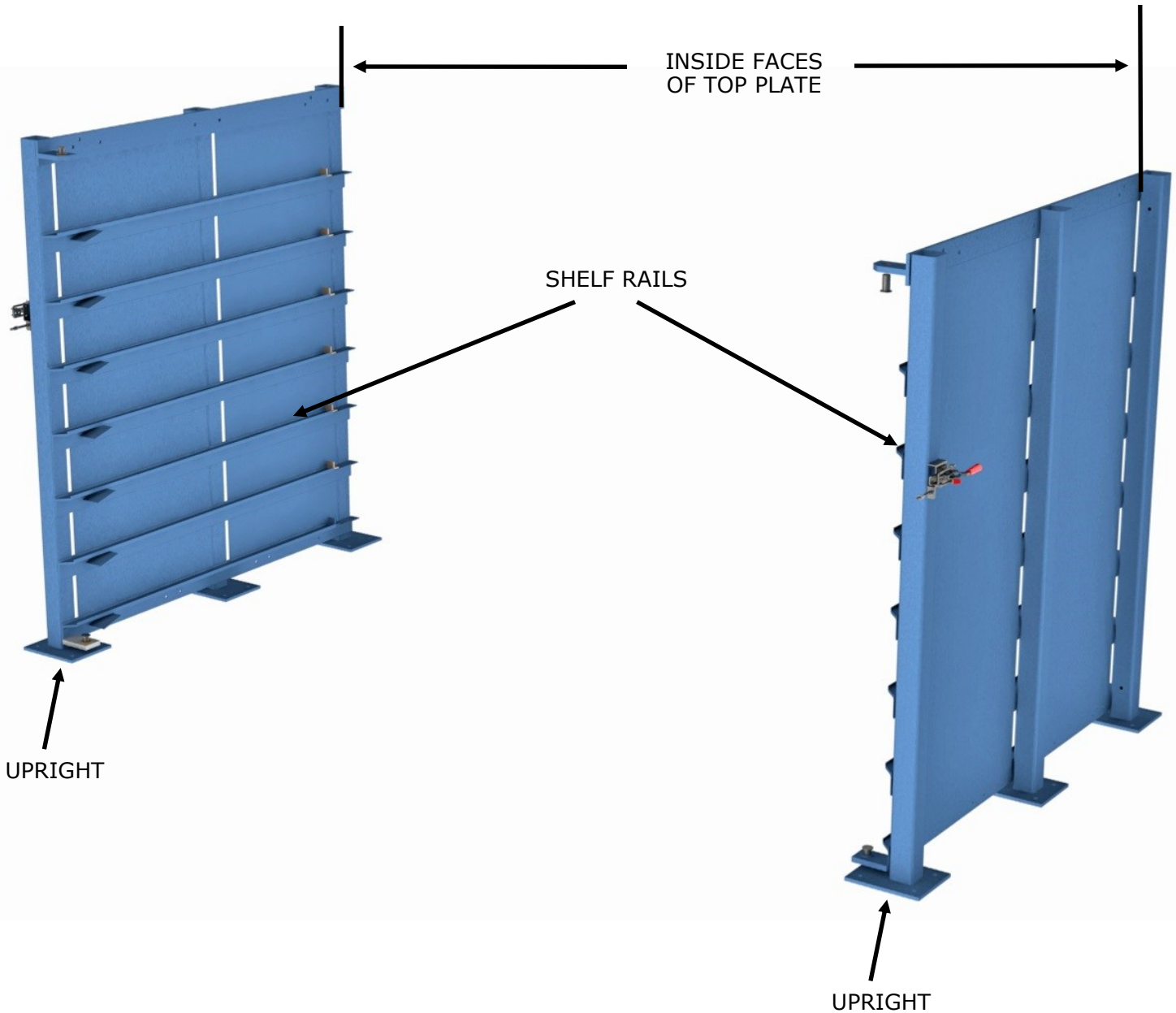


Sheetmaster Folding



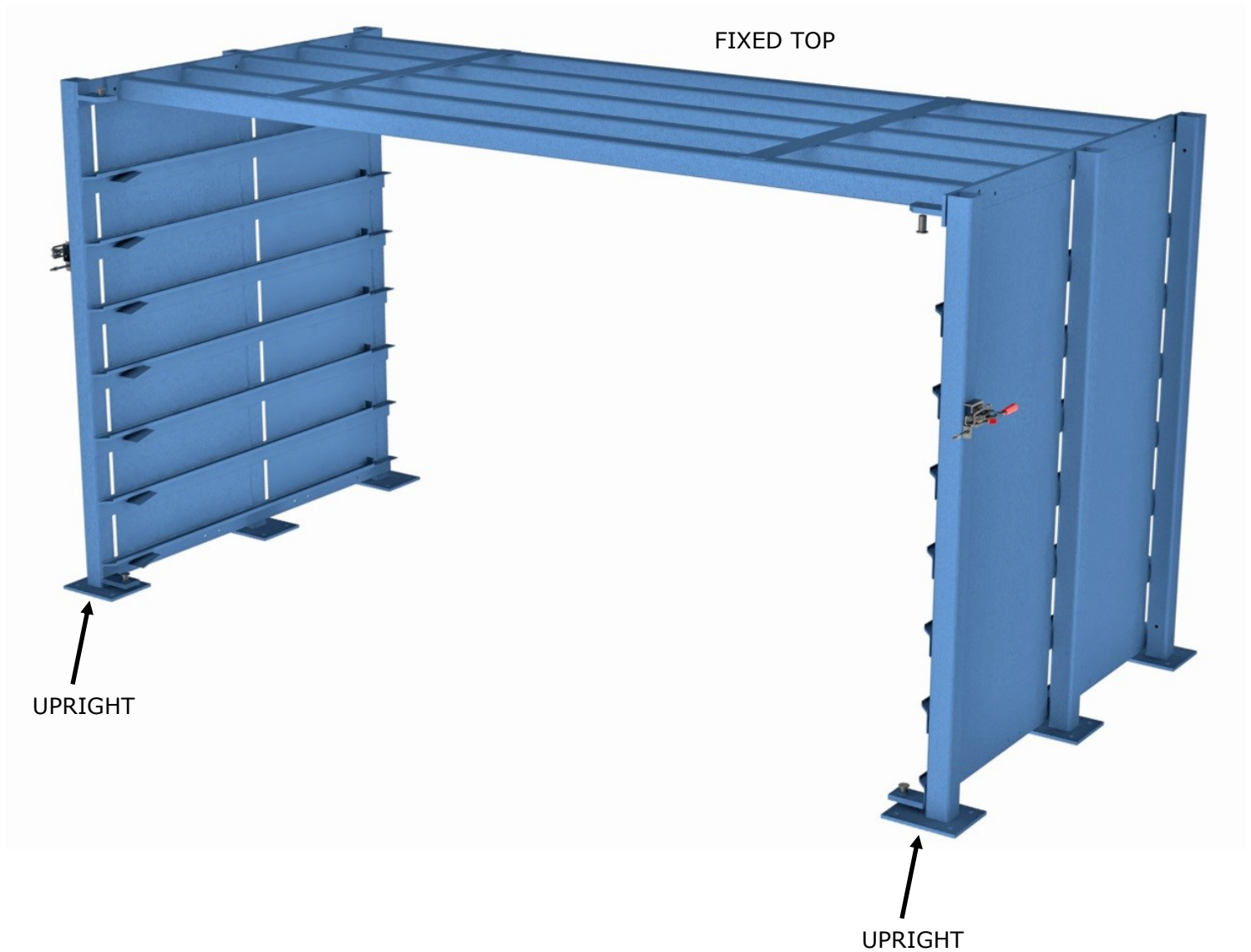
SETUP AND INSTALLATION INSTRUCTIONS

1. Stand uprights up so shelf rails are facing each other. Uprights are to be set parallel to each other. Measure width of fixed top (Shown in step 2). Place uprights the same distance apart as the width of fixed top measuring from the inside faces of the rigid upright top plate.



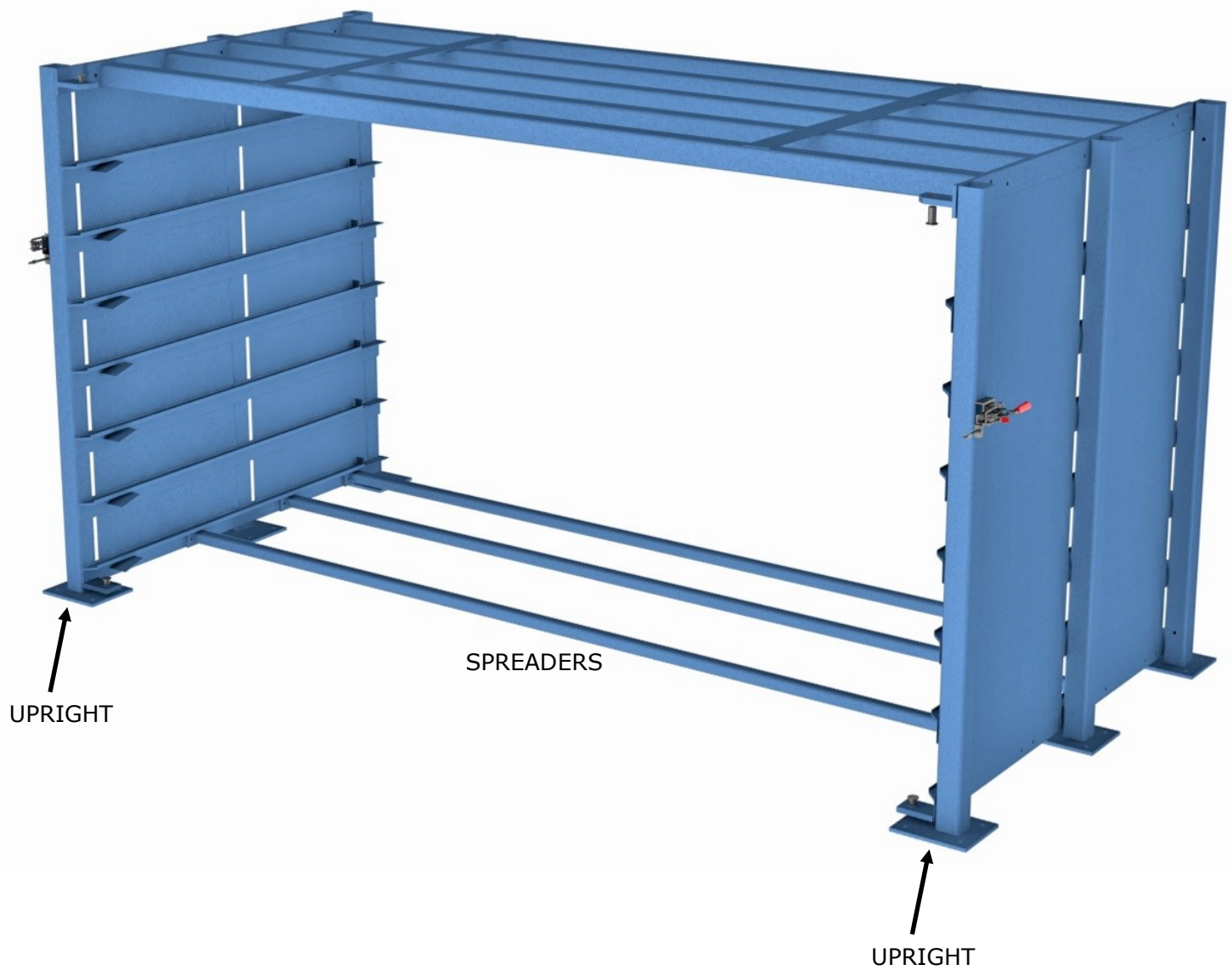
SETUP AND INSTALLATION INSTRUCTIONS

2. Fasten fixed top into place between rigid standing uprights using holes provided. Fixed top should be flush with upright top plate for proper top shelf clearance.



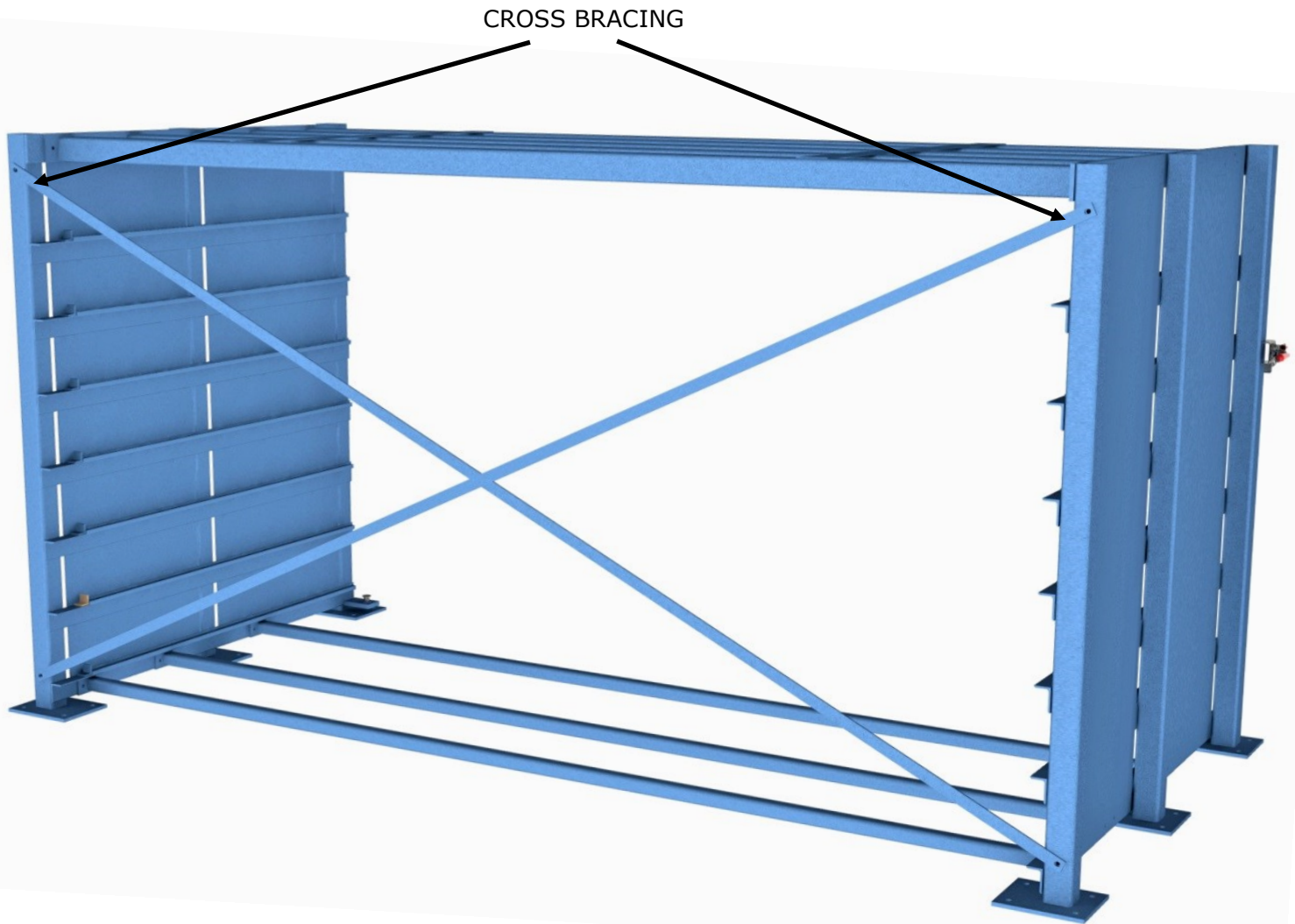
SETUP AND INSTALLATION INSTRUCTIONS

3. Fasten spreaders to bottom of standing rigid uprights using holes provided in uprights.



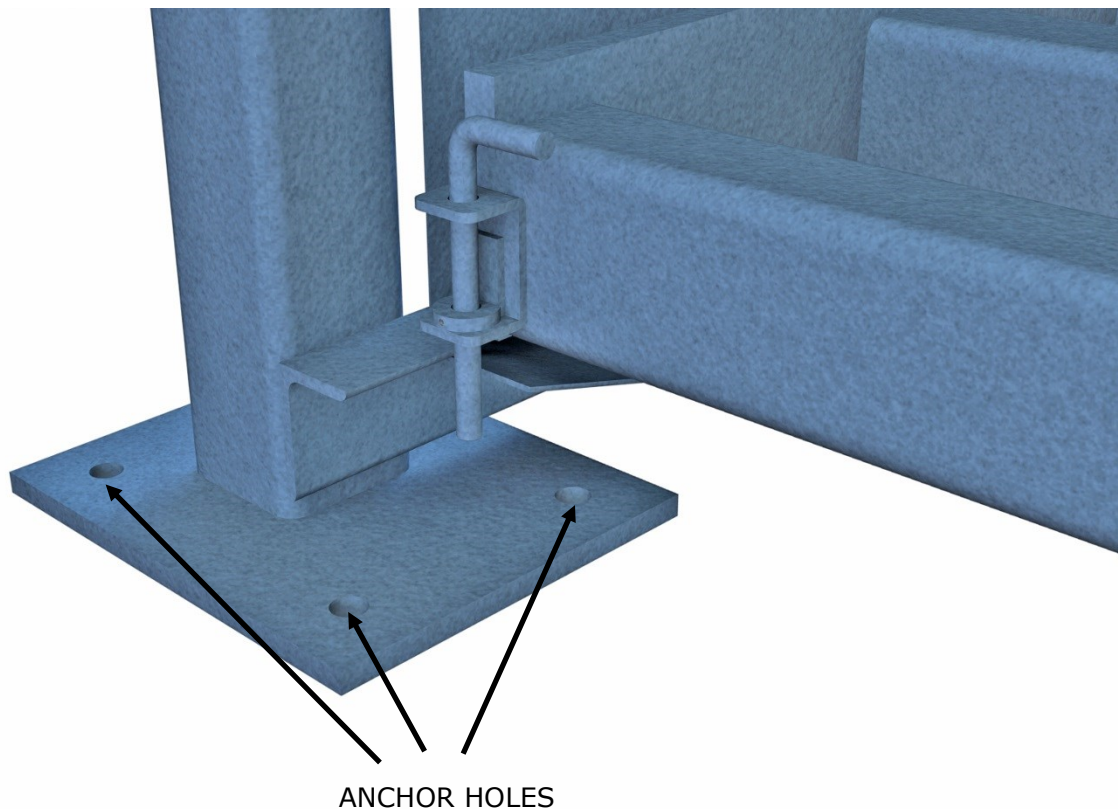
SETUP AND INSTALLATION INSTRUCTIONS

4. Bolt cross bracing to rear of sheetmaster using holes in rear post of upright. See view below for proper placement.



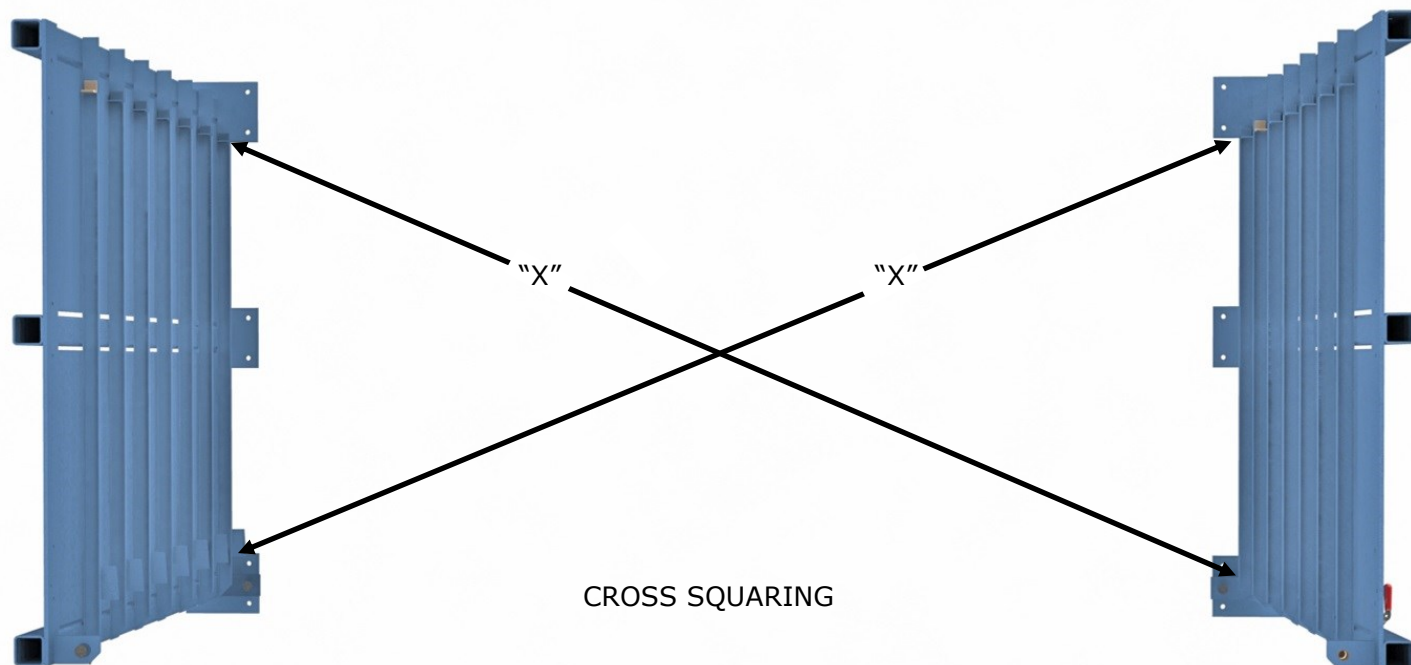
SETUP AND INSTALLATION INSTRUCTIONS

5. Complete a final cross square check to ensure that the rigid uprights are square to each other. ("X" dimensions should be equal) Level and anchor sheetmaster rigid upright/frame to floor using the holes provided in the bottom pad of the rigid uprights.



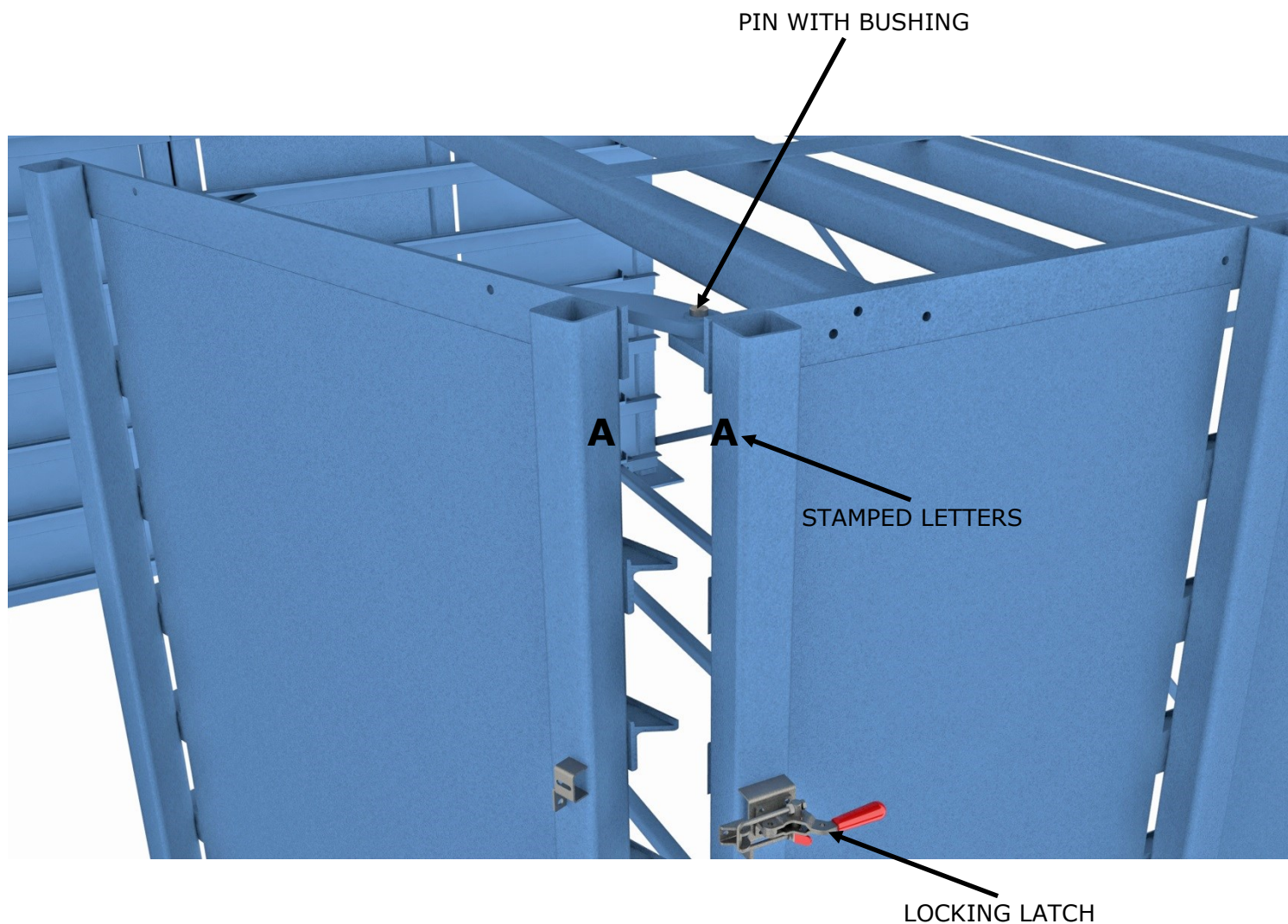
UPRIGHT 1

UPRIGHT 2



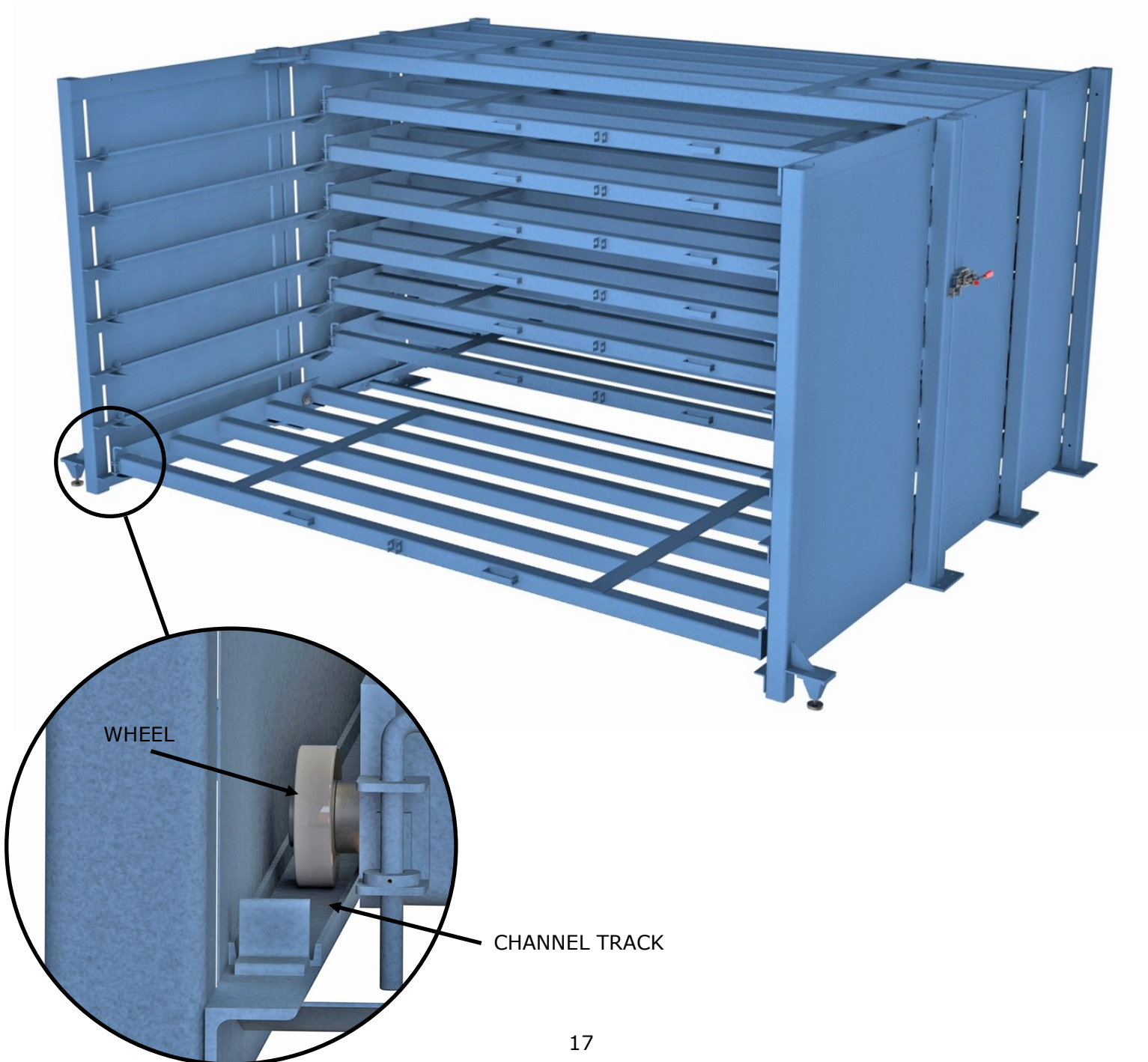
SETUP AND INSTALLATION INSTRUCTIONS

6. Install swinging doors. Look for stamped letter on doors on upright tube. When installing doors be sure to match alike letters. Align bushings in hinges and insert hinge pin. Hinges are located on top and bottom of door. Be sure to install all pins before proceeding any further. Swing doors fully open and lock door into place. Use locking latch and foot lock located on bottom of door.



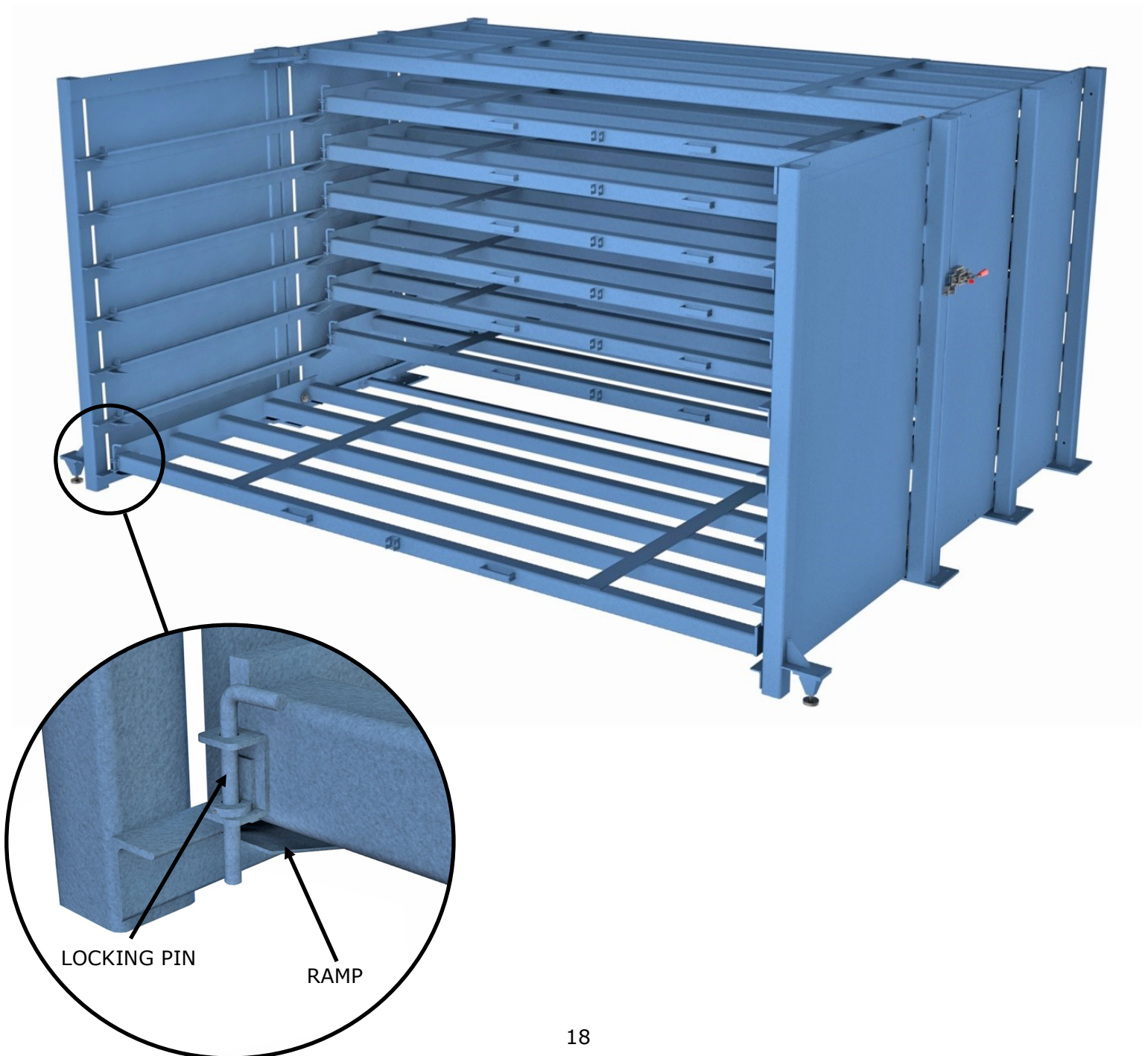
SETUP AND INSTALLATION INSTRUCTIONS

7. Before placing shelves on sheetmaster, ensure doors are swing completely open and secured/locked in place with locking latches and floor foot brake. Install shelves by placing wheel located at each end of shelf onto the channel tracks on standing uprights. Ensure locking latch is located on the left side.



SETUP AND INSTALLATION INSTRUCTIONS

8. Check the locking pin latches to ensure the pin travels and drops past the ramp (as shown in zoomed in view). Once all shelves have been checked, installation is complete.



SETUP AND INSTALLATION INSTRUCTIONS

9. To fold/swing doors in, unlatch the locking latch and disengage the foot floor brake. Swing door in until doors stop. Then engage floor foot brake.

