

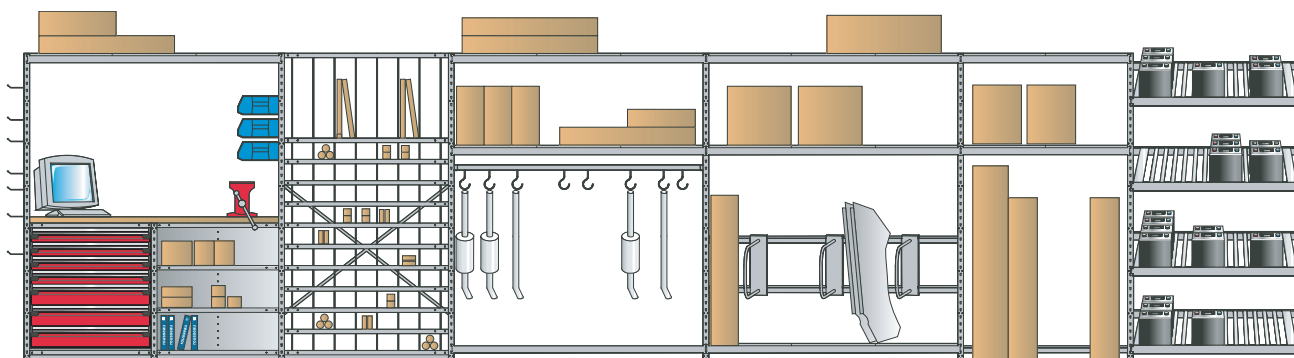


SPECIALIZED AUTOMOTIVE STORAGE

For some years now, Rousseau has been developing a system that offers a complete and integrated storage solution for the automotive industry. Whatever your needs, we are able to provide a heavy-duty and aesthetically pleasing option for even the most discerning automotive dealer.

What we offer is more than a simple product. It is a complete system to help you organize your parts department. Included are bumper and pipe racks, sheet metal racks, battery and tire racks, etc.

The variety and flexibility of the Rousseau line represents a great advantage. It is a system that will grow with your needs. We are proud to be able to help answer the needs of any customer, big or small, and always offer the same quality and service which has become our trademark.

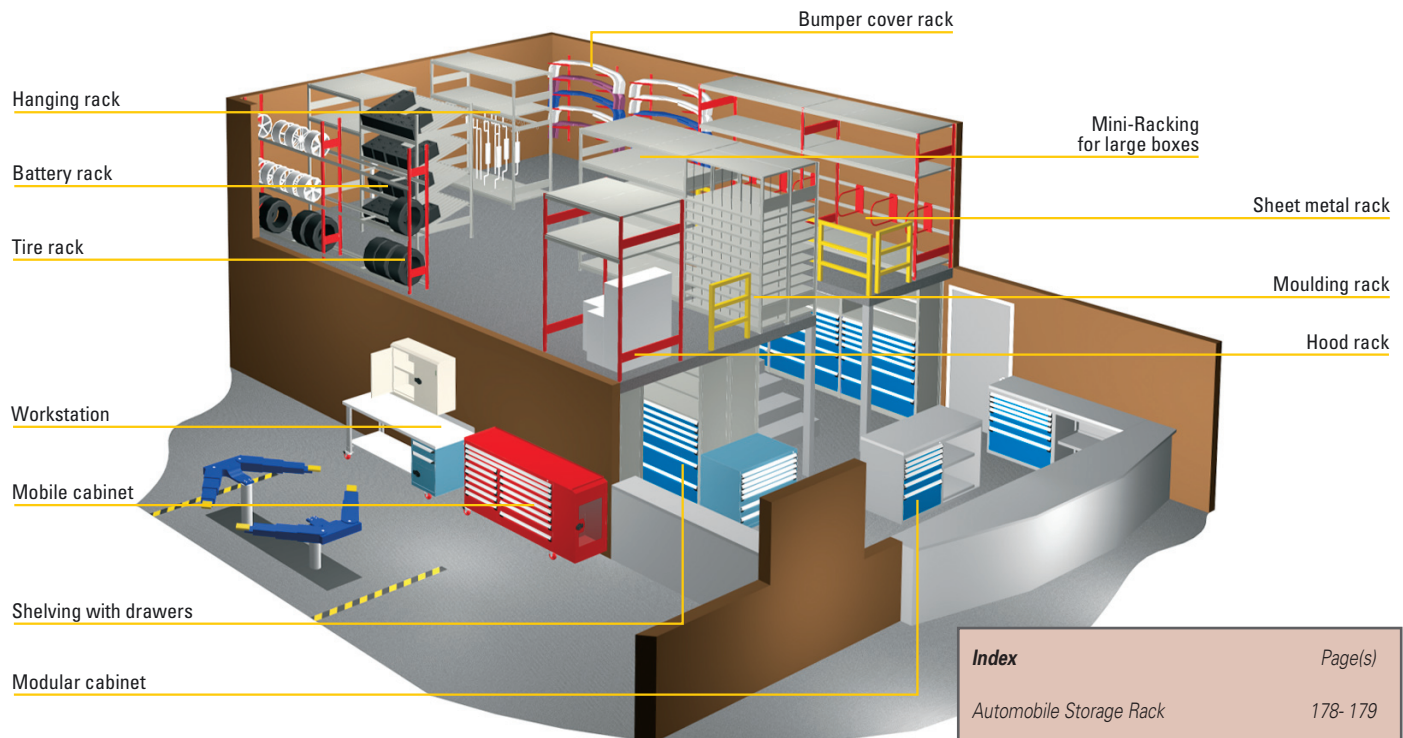


Automotive Storage Rack

One Solution for Each Application

The strength of our system is that it adapts to your environment and evolves with your needs.

With the numerous dimensions and variety of accessories offered, you can create your own customized layout to complement the structure of your building.



Index	Page(s)
Automobile Storage Rack	178- 179
Proposals	181- 182
Components	183

Some Accomplishments



Single Hanging Rack



SRP0404

2 welded Mini-Racking upright assemblies;
3 steel decking levels;

The 60" and 72" W proposals include medium-duty beams and the 96" W proposals include heavy-duty beams;

To order an add-on unit, complete product number with A;

To order bolted uprights, order SRPX5XX instead of SRPX4XX.

Product #	W x D x H	# of rails (hooks)
SRP1405	60" x 36" x 75"	1 (15)
SRP1406	60" x 36" x 75"	2 (30)
SRP1403	72" x 36" x 75"	1 (15)
SRP1404	72" x 36" x 75"	2 (30)
SRP1407	96" x 36" x 75"	1 (25)
SRP1408	96" x 36" x 75"	2 (45)
SRP0405	60" x 36" x 87"	1 (15)
SRP0406	60" x 36" x 87"	2 (30)
SRP0403	72" x 36" x 87"	1 (15)
SRP0404	72" x 36" x 87"	2 (30)
SRP0407	96" x 36" x 87"	1 (25)
SRP0408	96" x 36" x 87"	2 (45)

Double Hanging Rack



SRP2404

2 welded Mini-Racking upright assemblies;
3 steel decking levels;

The 60" and 72" W proposals include medium-duty beams and the 96" W proposals include heavy-duty beams;

To order an add-on unit, complete product number with A;

To order bolted uprights, order SRPX5XX instead of SRPX4XX.

Product #	W x D x H	# of rails (hooks)
SRP3405	60" X 36" X 75"	2 (30)
SRP3406	60" X 36" X 75"	4 (60)
SRP3403	72" X 36" X 75"	2 (30)
SRP3404	72" X 36" X 75"	4 (60)
SRP3407	96" X 36" X 75"	2 (50)
SRP3408	96" X 36" X 75"	4 (90)
SRP2405	60" X 36" X 87"	2 (30)
SRP2406	60" X 36" X 87"	4 (60)
SRP2403	72" X 36" X 87"	2 (30)
SRP2404	72" X 36" X 87"	4 (60)
SRP2407	96" X 36" X 87"	2 (50)
SRP2408	96" X 36" X 87"	4 (90)

Single Carpet Rack



SRP0473

2 welded Mini-Racking upright assemblies;
3 steel decking levels;

The 60" and 72" W proposals include medium-duty beams and the 96" W proposals include heavy-duty beams;

To order an add-on unit, complete product number with A;

To order bolted uprights, order SRPX5XX instead of SRPX4XX.

Product #	W x D x H	# of rails
SRP1475	60" X 36" X 75"	1
SRP1476	60" X 36" X 75"	2
SRP1473	72" X 36" X 75"	1
SRP1474	72" X 36" X 75"	2
SRP1477	96" X 36" X 75"	1
SRP1478	96" X 36" X 75"	2
SRP0475	60" X 36" X 87"	1
SRP0476	60" X 36" X 87"	2
SRP0473	72" X 36" X 87"	1
SRP0474	72" X 36" X 87"	2
SRP0477	96" X 36" X 87"	1
SRP0478	96" X 36" X 87"	2

Double Carpet Rack



SRP2473

2 welded Mini-Racking upright assemblies;
3 steel decking levels;

The 60" and 72" W proposals include medium-duty beams and the 96" W proposals include heavy-duty beams;

To order an add-on unit, complete product number with A;

To order bolted uprights, order SRPX5XX instead of SRPX4XX.

Product #	W x D x H	# of rails
SRP3475	60" X 36" X 75"	2
SRP3476	60" X 36" X 75"	4
SRP3473	72" X 36" X 75"	2
SRP3474	72" X 36" X 75"	4
SRP3477	96" X 36" X 75"	2
SRP3478	96" X 36" X 75"	4
SRP2475	60" X 36" X 87"	2
SRP2476	60" X 36" X 87"	4
SRP2473	72" X 36" X 87"	2
SRP2474	72" X 36" X 87"	4
SRP2477	96" X 36" X 87"	2
SRP2478	96" X 36" X 87"	4

High Density Floor Mat Rack



2 welded Mini-Racking upright assemblies;
4 steel decking levels;
Dividing rods;

To order an add-on unit, complete product number with A;

To order bolted uprights, order SRP0582 instead of SRP0482.

Product #	W x D x H
SRP0482	60" X 36" X 87"

Battery Rack



SRP0461

2 welded Mini-Racking upright assemblies;
4 battery platforms;

87" H proposals also include one steel decking level;

To order an add-on unit, complete product number with A;

To order bolted uprights, order SRPX5XX instead of SRPX4XX.

Product #	W x D x H
SRP0460	48" x 36" x 75"
SRP0461	48" x 48" x 75"
SRP0462	48" x 36" x 87"
SRP0463	48" x 48" x 87"

Proposals

Tire Rack



SRP0442

Single Row :

- 2 welded Mini-Racking upright assemblies;
- 3 pairs of beams for tire rack;
- 2 pairs of wall spacers;
- Floor anchor plates and hardware kit.

Double Row :

- 4 welded Mini-Racking upright assemblies;
- 6 pairs of beams for tire rack;
- 2 pairs of post spacers;
- Floor anchor plates and hardware kit;

To order an add-on unit, complete product number with A;

To order bolted uprights, order SRPX5XX instead of SRPX4XX.

Product #	W x D x H	Type
SRP0443_	60" X 15" X 87"	Single
SRP0444_	60" X 48" X 87"	Double
SRP0441_	72" X 15" X 87"	Single
SRP0442_	72" X 48" X 87"	Double

Bumper and Pipe Rack



SRP0420

- 2 welded Mini-Racking upright assemblies;
- 3 steel decking levels;

The 60" and 72" W proposals include medium-duty beams and the 96" W proposals include heavy-duty beams;

To order an add-on unit, complete product number with A;

To order bolted uprights, order SRPX5XX instead of SRPX4XX.

Product #	W x D x H	# of dividers
SRP1421_	60" X 36" X 75"	4
SRP2421_	60" X 48" X 75"	4
SRP1420_	72" X 36" X 75"	4
SRP2420_	72" X 48" X 75"	4
SRP1422_	96" X 36" X 75"	6
SRP2422_	96" X 48" X 75"	6
SRP0421_	60" X 36" X 87"	4
SRP3421_	60" X 48" X 87"	4
SRP0420_	72" X 36" X 87"	4
SRP3420_	72" X 48" X 87"	4
SRP0422_	96" X 36" X 87"	6
SRP3422_	96" X 48" X 87"	6

Windshield Rack



SRP0481

- 2 welded Mini-Racking upright assemblies;
- 3 steel decking levels;
- Proposals include heavy-duty beams;
- Dividing rods;

To order an add-on unit, complete product number with A;

To order bolted uprights, order SRPX5XX instead of SRPX4XX.

Product #	W x D x H	# of spaces
SRP0481_	72" X 48" X 87"	8
SRP0480_	96" X 48" X 87"	10

Sheet Metal Rack



SRP0430

- 2 welded Mini-Racking upright assemblies;
- 3 steel decking levels;

The 60" and 72" W proposals include medium-duty beams and the 96" W proposals include heavy-duty beams;

To order an add-on unit, complete product number with A;

To order bolted uprights, order SRPX5XX instead of SRPX4XX.

Product #	W x D x H	# of dividers
SRP1431_	60" X 36" X 75"	2
SRP2431_	60" X 48" X 75"	2
SRP1430_	72" X 36" X 75"	2
SRP2430_	72" X 48" X 75"	2
SRP1432_	96" X 36" X 75"	3
SRP2432_	96" X 48" X 75"	3
SRP0431_	60" X 36" X 87"	2
SRP3431_	60" X 48" X 87"	2
SRP0430_	72" X 36" X 87"	2
SRP3430_	72" X 48" X 87"	2
SRP0432_	96" X 36" X 87"	3
SRP3432_	96" X 48" X 87"	3



Bumper Cover Double Rack



WMA3510

1-85 1/2" H centered stand;
12 pairs of bumper supports.

Product #	W x D x H	
WMA3510	45" x 42" x 85 1/2"	With anchoring kit
WMA3511	45" x 42" x 87"	With leveling glide kit
WMA3512	45" x 42" x 91"	With 4" casters : 2 rigid and 2 swivel with total-lock brake
WMA3513	45" x 42" x 91"	With 4" casters : 2 swivel and 2 swivel with total-lock brake

Wall-Mounted Bumper Cover Rack



6 pairs of bumper supports;
2 multi-purpose wall-mounted uprights. 300 lb capacity (wall and wall anchoring must be strong enough);
Wall anchoring not included.

Product #	W x D x H
WMP1000	42" X 23" X 72"

Moulding Rack



SRP0410

4 upright assemblies;
1 back sway brace;
Dividing rods;
To order an add-on unit, complete product number with A;
To order bolted uprights, order SRPX5XX instead of SRPX4XX.

Product #	W x D x H	# of Shelves	# of Spaces
SRP0413_	36" x 48" x 75"	10	54
SRP0411_	36" x 48" x 87"	12	66
SRP0412_	48" x 48" x 75"	10	72
SRP0410_	48" x 48" x 87"	12	88


Hood Rack



SRP0450

2 welded Mini-Racking upright assemblies;
Medium-duty beams;
2 steel decking levels;
Floor anchor plates and hardware kit;
To order an add-on unit, complete product number with A;
To order bolted uprights, order SRPX5XX instead of SRPX4XX.

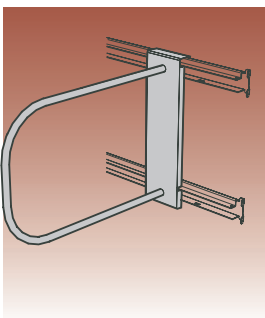
Product #	W x D x H
SRP2450_	48" X 48" X 75"
SRP2451_	60" X 48" X 75"
SRP0450_	48" X 48" X 87"
SRP0451_	60" X 48" X 87"

 **Hood Rack must be anchored to the floor (anchoring kit included).**

Components

Double Divider for Mini-Racking

SR60

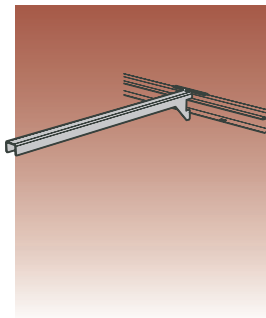


Supports parts and boxes that are stored vertically in a Mini-Racking unit. Parts lean against the "D" shape of the divider;
Attaches on 2 SR21 medium-duty beams or 2 SR22 heavy-duty beams;
Space between the two beams should be 14" c/c;
Divider can be adjusted laterally (left to right) without tools;
Locks in position when load is applied laterally;
Compatible with shelving 24" deep and deeper.

Product #	D x H
SR60-2415	24" x 15"

Single Divider for Mini-Racking

SR61



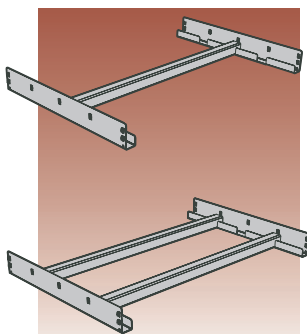
Divides those parts that lean vertically against the back of the Mini-Racking;
Installs on SR21 medium-duty beams or SR22 heavy-duty beams ;
Dividers can be adjusted laterally (left to right) without tools;
Locks in position when load is applied laterally;
Compatible with shelving 24" deep and deeper.

Product #	Depth
SR61-2401	24"

Components

Hanging Rail – Single and Double

SR62



Single rail: SR62-XXXX01;
Double rail: SR62-XXXX02;
For storage of parts of non-standard sizes;
300 lb capacity per rail;
Rail adaptors :
Install on the Spider® post with hooks, no bolts;
Includes security mechanism to keep from accidentally unhooking;
3 installation positions possible : one in the middle and two closer to the edges;
Compatible with SR63-02 hooks (not included);
Hooks pivot once installed on the rail. They can be put on and taken off the rail at all times, even when the rail is in place on the adaptors;
Rail and adaptors in galvanized steel;
When ordering, specify the last 2 digits in the number code. Ex. : SR62-602402 for a double hanging rail that is 60" W x 24" D.

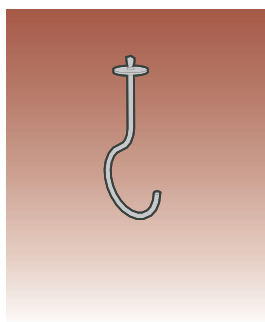
Product #	W x D
SR62-601801	60" x 18"
SR62-6024	60" x 24"
SR62-6036	60" x 36"
SR62-721801	72" x 18"
SR62-7224	72" x 24"
SR62-7236	72" x 36"
SR62-961801	96" x 18"
SR62-9624	96" x 24"
SR62-9636	96" x 36"

NOTE To order a unit of industrial shelving or Mini-Racking,

SEE
PAGES
52-73

Hook for Hanging Rail

SR63

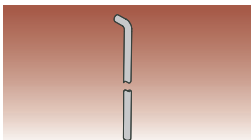


50 lb capacity per hook;
Hooks pivot once installed on the SR62 rail;
They can be put on and taken off even when the rail is in place on the adaptors.

Product #	Height
SR63-02	5"

Dividing Rods

SH56

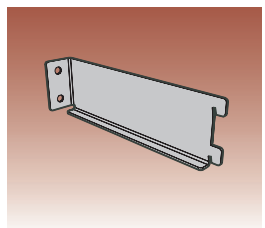


Sold in pairs;
Steel rods with 1/4" diameter;
90° fold at one end to ensure it stays in place;
Superior rigidity compared to plastic rods currently used on the market for this type of application.

Product #	Height
SH56-72	72"
SH56-84	84"
SH56-96	96"

Wall Spacers

SR45

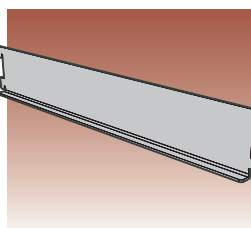


Sold in pairs;
Spaces shelving 9" away from the wall;
Attaches to the SR post in the delta holes without tools; must be secured in place with plastic clip (included);
Galvanized steel.

Product #	Depth
SR45-09	9"

Post Spacers

SR48

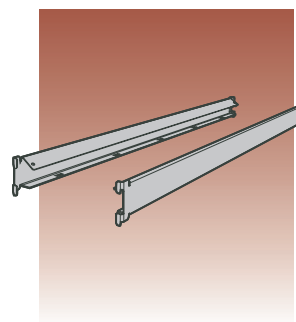


Sold in pairs;
Spaces two back-to-back shelving units 18" apart;
Attaches to the SR post in the delta holes without tools; must be secured in place with plastic clips (included);
Galvanized steel.

Product #	Depth
SR48-18	18"

Beams for Tire Rack

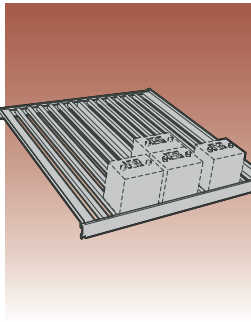
SR20



Sold in pairs;
340 lb capacity per pair;
Allows for storage of popular sized tires of different dimensions up to 17" in diameter (light truck and SUV);
Constructed with a sloped surface to prevent the deformation of tires;
72" wide beams require a tie bar SR25 installed in the center;
15" deep units recommended for tires;
12" deep units recommended for rims.

Product #	Width
SR20-36	36"
SR20-48	48"
SR20-60	60"
SR20-72	72"

Battery Platform



Level includes 2 heavy-duty beams and 13 tie bars;
Equipped with a front stop and two side rails to prevent the batteries from falling;
15° inclination eases the movement of batteries forward for easy access;
Galvanized steel.

Product #	W x D	# of batteries (medium size)
SRP9001	48" x 36"	20
SRP9002	48" x 48"	28

NOTE To order a unit of industrial shelving or Mini-racking,

SEE
PAGES
52-73