

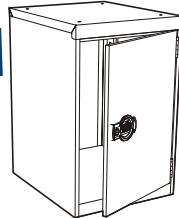
Tools Required



Outils requis

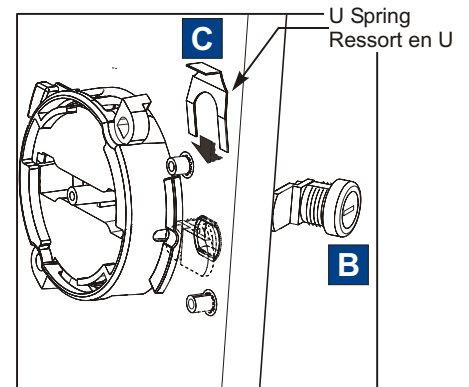
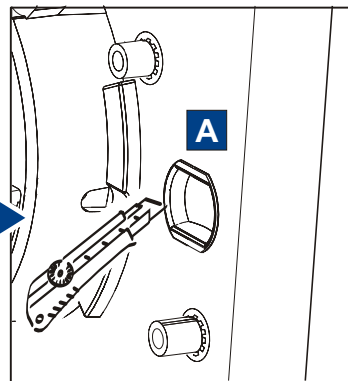
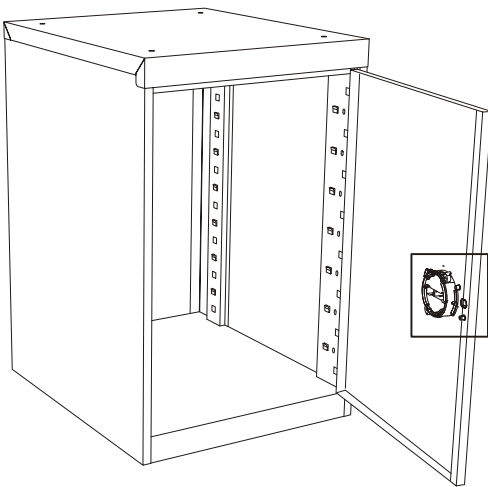
Door Lock Assembly

- Remove the knock-out from the plastic handle with a knife.
- Assemble the lock onto the door.
- Use the U spring to secure the lock in place.



Serrure de porte - Assemblage

- Couper la rondelle détachable (knock out) de la poignée de plastique avec un couteau.
- Assemblez la serrure sur la porte.
- Utilisez le ressort en U pour bloquer la serrure en place.



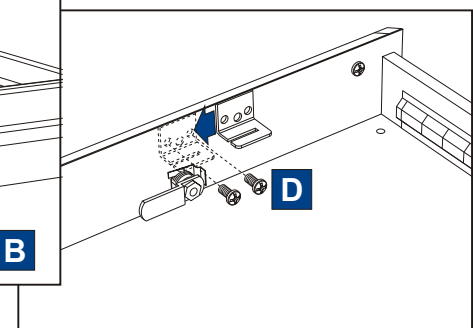
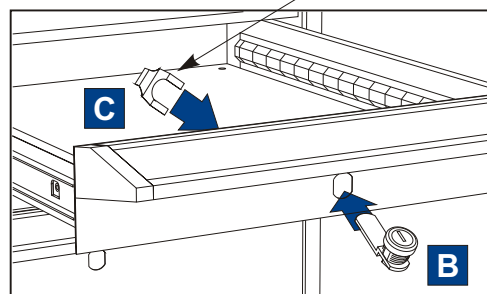
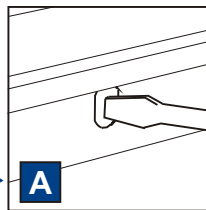
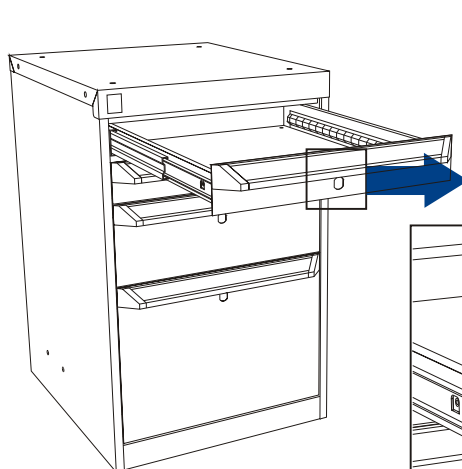
Drawer Lock Assembly

- Remove the knock-out from the drawer front.
- Assemble the lock onto the drawer.
- Use the U spring to secure the lock in place.
- Install the reinforcing bracket.



Serrure de tiroir - Assemblage

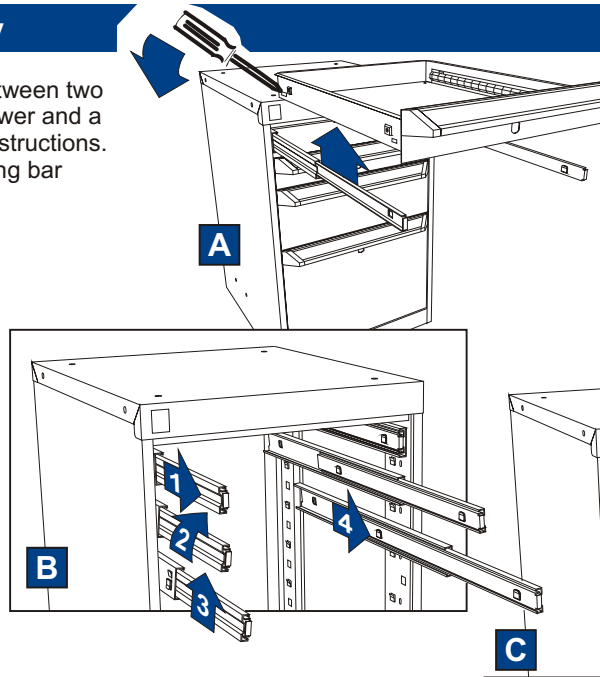
- Défonyez la rondelle (knock out) du devant de tiroir.
- Assemblez la serrure sur le tiroir.
- Utilisez le ressort en U pour bloquer la serrure en place.
- Installez le renfort de serrure.



Shelves Assembly

If shelves are required between two drawers or between a drawer and a door, read the following instructions. If not required, go to locking bar assembly.

- A. Remove the drawers from the cabinet.
- B. If necessary, remove the glides.
- C. Insert the shelves into the cabinet and secure them with 2 tapping screws 12x1/2" at the front.



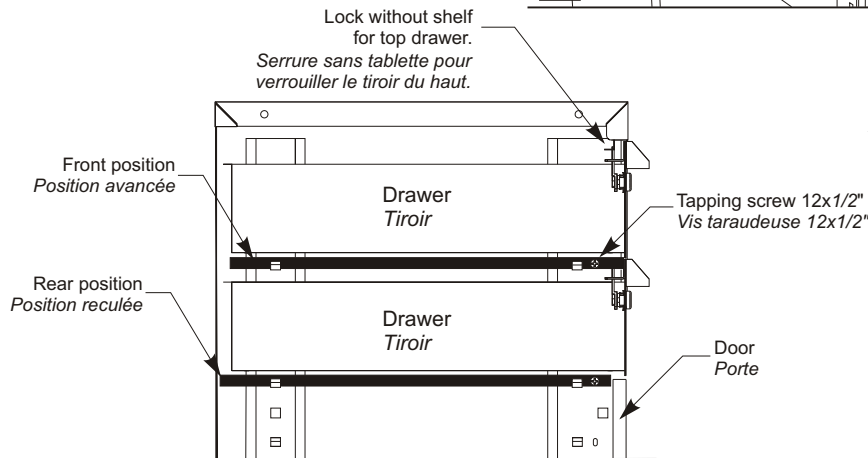
Tablettes - Assemblage

Si vous devez installer des tablettes entre deux tiroirs ou entre un tiroir et une porte, lire les intructions ci-dessous. Sinon, passez à l'étape suivante.

- A. Enlevez les tiroirs du cabinet.
- B. Si nécessaire, enlevez les glissières.
- C. Insérez les tablettes et fixez-les en place avec deux vis taraudeuses 12x1/2" à l'avant.

Attention

Shelves to be position according to need:
 -Front position between two drawers.
 -Rear position between a drawer and a door.



Side view
Vue de côté

Attention

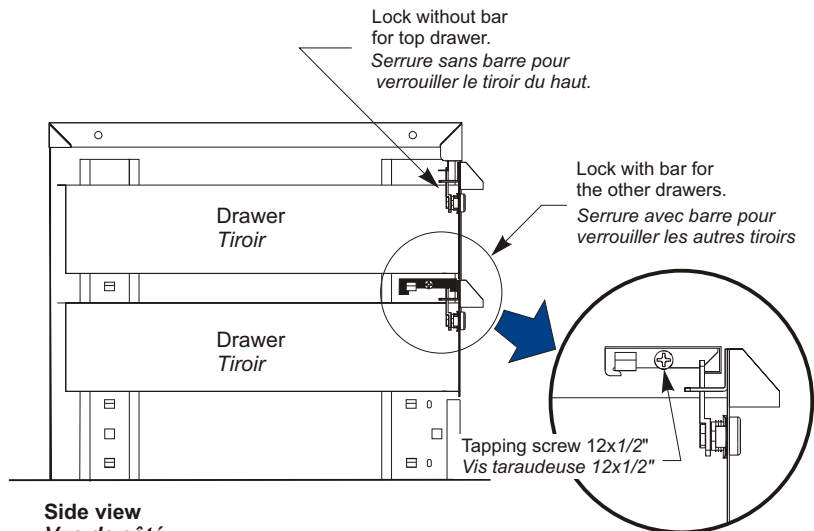
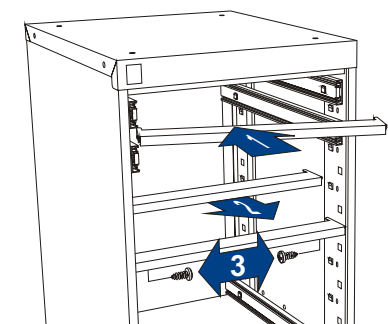
Positionnez les tablettes selon l'application requise:
 -Position avancée entre deux tiroirs.
 -Position reculée entre un tiroir et une porte.

Locking Bar Assembly

If locking bars are required between two drawers, read the following instructions.

Barre de verrouillage - Assemblage

Si vous devez installer des barres de verrouillage entre deux tiroirs, lire les intructions ci-dessous.



Side view
Vue de côté