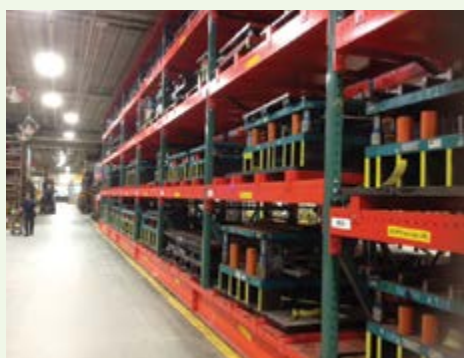


SK4000[®]

Structural tubular rack



Columns are available in three standard sizes – 3" x 3," 3" x 4," 4" x 4."



Advantages:

- Fully welded tubular steel for both horizontal and diagonal bracing
- Beam adjustability at 3" increments
- Sanitary version with welded-on caps and fewer holes to catch debris
- Greater impact resistance

Applications:

- Seismic zones
- Rack-supported buildings
- AS/RS (Automatic Storage and Retrieval Systems)
- Heavy paper roll storage
- Drive-In
- Die racks
- Food industry

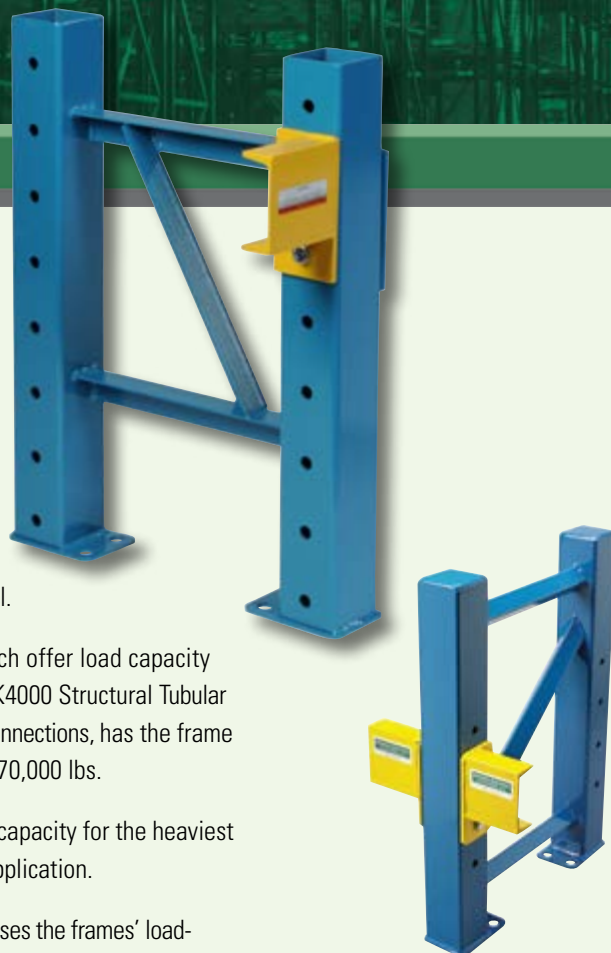
SK4000 Structural Tubular pallet rack combines the load capacity of structural channel racks with the torsional strength of tubular steel.

Unlike conventional racks which offer load capacity in the 30,000 lbs. range, the SK4000 Structural Tubular Pallet Rack, with bolted beam connections, has the frame strength to support loads over 70,000 lbs.

This is more than enough rack capacity for the heaviest die storage rack or auto part application.

Thick structural tube steel increases the frames' load-carrying capacity and resistance to seismic forces, while enabling greater resistance to fork truck impact damage.

The SK4000 has the frame strength to support loads over 70,000 lbs.



For use in the food industry, sanitary versions of SK4000 pallet rack have diamond-profile bracing and connection holes only where beams are located, eliminating extra holes that can catch dirt and debris.

SK4000 is available with a bacteria-resistant finish.



For added strength, fully welded tubular steel is used for both horizontal and diagonal bracing.