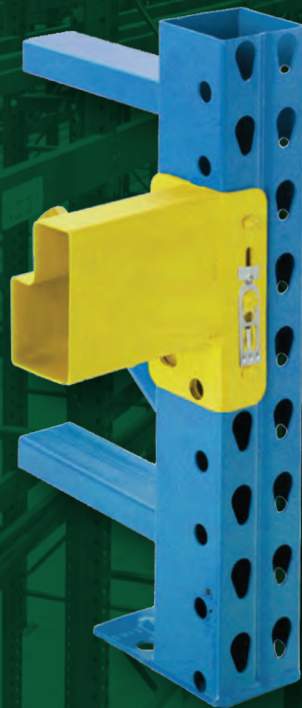




# SK2000® | SK2500® Closed Tubular Racking

Versatile, Strong and Durable



**SK2000  
BOLTLESS**



**SK2500  
BOLTED**



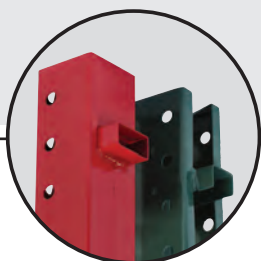
# KEY FEATURES & BENEFITS

## Why Choose Steel King's Closed Tubular Rack?

Roll-formed steel is a popular and versatile selection for racking. With today's demand for safe, high performance structures, **Steel King's closed-tube, roll-formed racking** has become an industry standard.

Steel King's columns and beams are formed from high-strength American-made steel, continuously welded into closed tubular sections, providing not only exceptional strength, but also dramatically increased durability. Engineering tests confirm it.

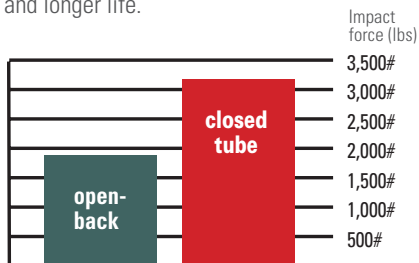
Steel King provides the most versatile construction available with beam, frame and component options.



### Closed-tube design

gives it 250% more frontal impact strength and 68% greater side impact resistance than an open back column, greatly enhancing product safety in your facility.

Reduced damage = less maintenance cost and longer life.



Steel King's SK2000 provides 68% greater side impact resistance than open back rack. See additional test results at [www.steelking.com/resources](http://www.steelking.com/resources)



### Strong tubular bracing

Unique all-closed design is secured with full-fillet weld, offering four times more weld than competitors' rack.

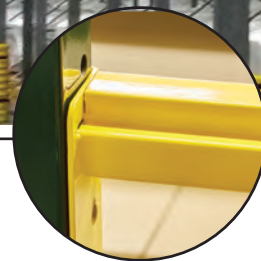


### 90-degree corner bend

creates added strength over competitors' racks.

### Frame columns

are available in multiple sizes and thicknesses, offering a wide variety of load-carrying capacities to match your need or application.



### Beams are available in many profiles and lengths

offering more load capacity and configuration options.



### Cross-aisle tie beams

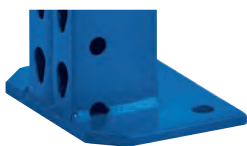
are used to stabilize single rows of racking or prevent collision between top of rack and ceiling-supported equipment.





### Standard base plates

Steel King's flush-to-column base plate design evenly disperses weight load. The multiple offset anchor holes allow greater flexibility for anchor placement.

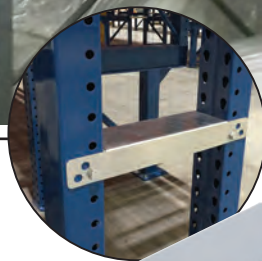


### Heavy-duty base plates

welded directly to uprights with multiple offset anchor holes allow for flexibility in anchor placement.

## 48 HOUR » QUICK SHIP

Many SK2000 products are available through our 48-hour Quick Ship program.



**Row spacers** create perfectly-aligned back-to-back pallet racking, as well as being used to join two rows of racking for greater stability.



**Wall ties** eliminate the worry of rack sway or tipping by connecting your rack to your facility. Steel construction resists bending.\*



\*Available only for low seismic zones



### Powder coat paint finish

is not only visually appealing, but compared to liquid paint is:

- 1500% more durable against impact damage
- 150% more resistant to chemicals
- 94% more resistant to chips and scratches
- Available in 13 basic colors





# BOLTLESS OR BOLTED

## SK2000 BOLTLESS



### Exclusive auto-engaging safety lock

prevents accidental beam disengagement per RMI specifications.

### Tear drop design

makes it easy to install (no tools required), saving costs on time and labor.

### Three-rivet beam connection

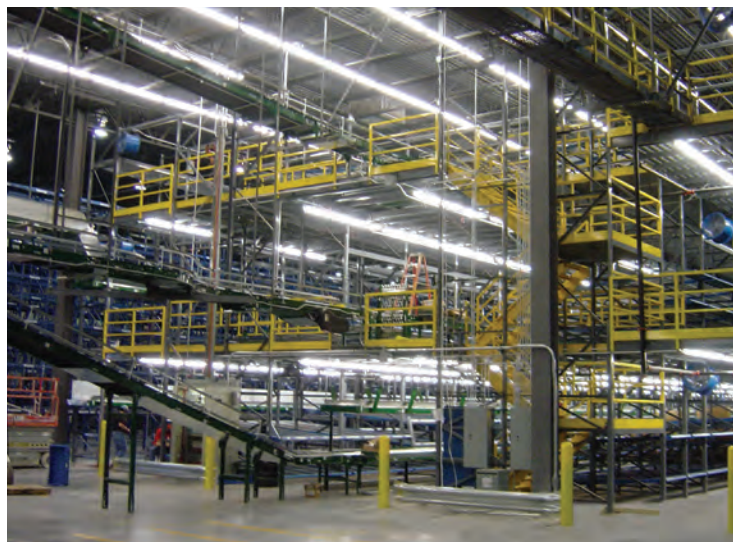
makes it 26% stronger than a standard two-rivet connection, providing better product protection.

Four-rivet beam connection on 5.5" and 6" beams.

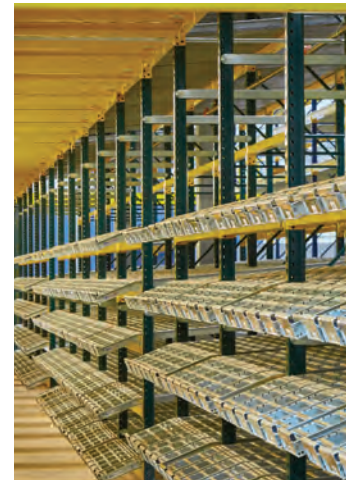
## Applications

Selective | Double-Deep Selective | Pick Modules |  
Mini Load ASRS | Carton Flow

**SK2000®**  
BOLTLESS TUBULAR RACK







## SK2500 BOLTED



5-gauge wrap-around connector plates provide you with greater moment resistance.

Two bolts per beam end provide greater moment capacity.

2" adjustability allows you the best possible space utilization.

Grade-5 hardware provides greater shear strength.

### Applications

Pushback | Pallet Flow | Drive In | Drive Thru | ASRS Storage Systems



**SK2500®**  
BOLTED TUBULAR RACK



# OPTIONS & ACCESSORIES

Steel King offers a variety of products to protect your rack system where it is most vulnerable.



## Double Reinforced Post

Double the strength where you need it most, available in a variety of heights.



## Heavy Horizontal

Replaces standard first horizontal brace with factory-welded structural channel. Increases impact resistance.



## Column Protectors

Keep pallet racks safe from loading equipment damage with welded-on or snap-on protectors. Enclosed, welded top for cleanliness and safety.

## Rack End Protection

With a bright industrial yellow finish, both Steel Guard® and Guard Dawg® are highly visible and effective for the prevention of fork truck-incurred rack damage.



Steel Guard



Guard Dawg

## Column Core® Protection

Factory-installed Column Core helps protect your most vulnerable areas and takes no extra aisle space. This optional feature makes SK2000 five times more impact resistant at the front corners and sides where the upright is most vulnerable.



The Column Core reinforcement is shown in yellow for visibility.

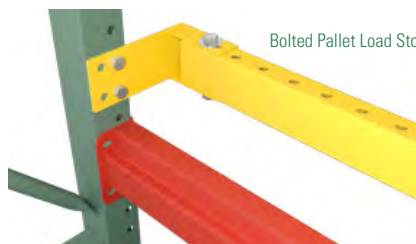
## Offset Front Column



The offset front column provides greater forklift clearance at the aisle face to prevent forklift/pallet frame damage where impact risk is highest.

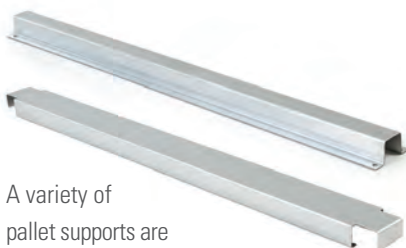
## Pallet Load Stop Beam

Securely bolted to your frame uprights, pallet load stop beams are designed to provide pallet load protection, ventilation, and adequate flue space opening for fire suppression sprinklers.



Bolted Pallet Load Stop

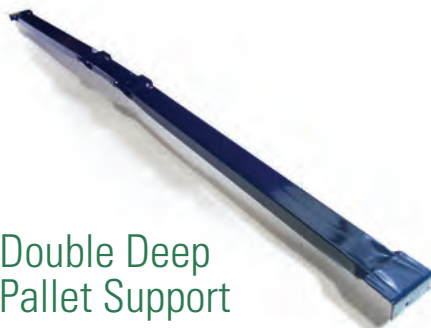
## Pallet Support Options



A variety of pallet supports are available to meet your product requirements. Shown: hat-shaped (top) and waterfall (bottom)

## Double Deep Pallet Support

Continuous smooth surface for double-deep applications. One-piece construction for easy installation.



Welded Pallet Load Stop





## Why Steel King?



**Industry Leadership** – With our state-of-the-art facilities, we lead the way with our uncompromising dedication to engineering and manufacturing excellence.

**Expertise and Versatility** – Our in-house engineering and drafting staff has decades of experience

designing thousands of rack systems, which means we can custom-engineer a solution for any storage challenge.

**Quality and Safety** – Steel King's products are designed to last longer, require less maintenance and provide greater safety. Our structural engineers design our products to strictly conform to industry design codes, and our rack system capacity charts are

RMI-certified to ensure product and worker safety.

Steel King facilities and processes are tested, and fabricator licenses are approved for the City of Los Angeles and the City of Phoenix.

Our welders are trained and qualified to American Welding Society (AWS) D1.1 and D1.3 standards. We also have an in-house Certified Welding Inspector (CWI).

**Single Source Responsibility** – Our breadth of standard products, combined with our ability to engineer and manufacture custom components, enables us to provide turnkey service.

We are a “one-stop shop”  
for all your storage needs.





Steel King is your source for ...



**Structural steel rack**



**Cantilever rack**



**Specialty racks**



**Elevated work platforms**



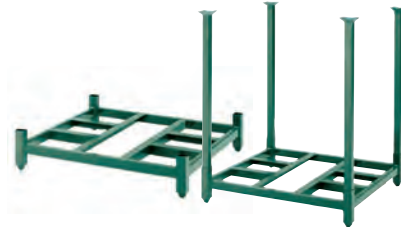
**Steel guard rail**



**Industrial containers**



**Custom shipping racks**



**Portable racks**



**Steel King**  
has been delivering  
customized storage  
solutions since 1970,

designing and manufacturing pallet racking  
systems and related material handling  
products that improve operational efficiency  
in manufacturing, warehousing and  
distribution facilities.

When it comes to offering the highest quality,  
safest and most diverse product offerings,

**Steel King is built to deliver.<sup>SM</sup>**



**STEEL KING®**

**BUILT TO DELIVER**

Distributed by Cisco-Eagle:  
[www.cisco-eagle.com](http://www.cisco-eagle.com) | 888-877-3861