

Light duty mobile racking system

Documentation

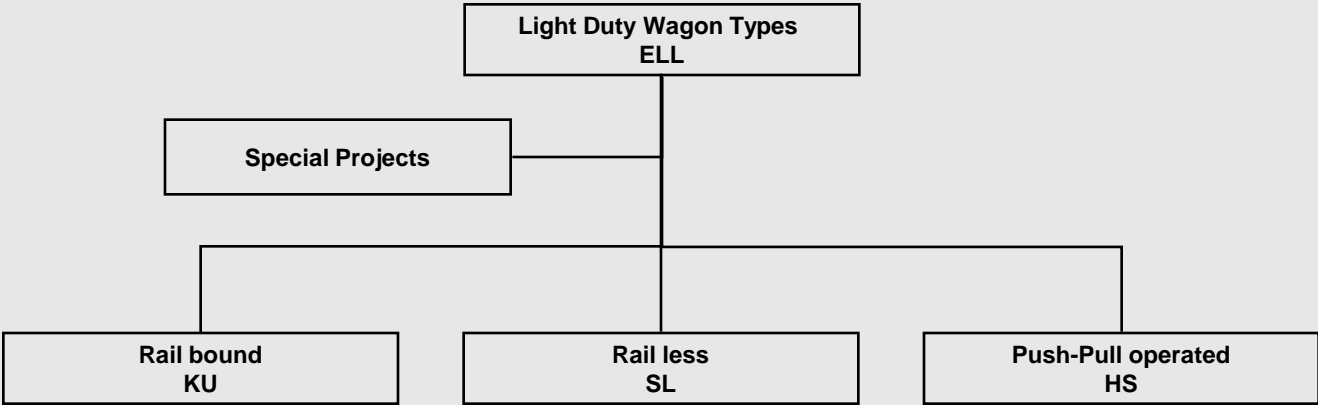
Technics

Sales

Application



Wagon Construction Type ELL



Wagon with crank drive

Guidance	Rails
Driving	Crank 1:3 / 1:6
Deviations wagon max.	11080x1400 mm
Tracks max.	7 tracks
Track deviations max.	2500 mm
Wagon load max.	14.000 kg/wagon
Wheel load max.	1.000 kg/wheel



Wagon rail less with crank drive

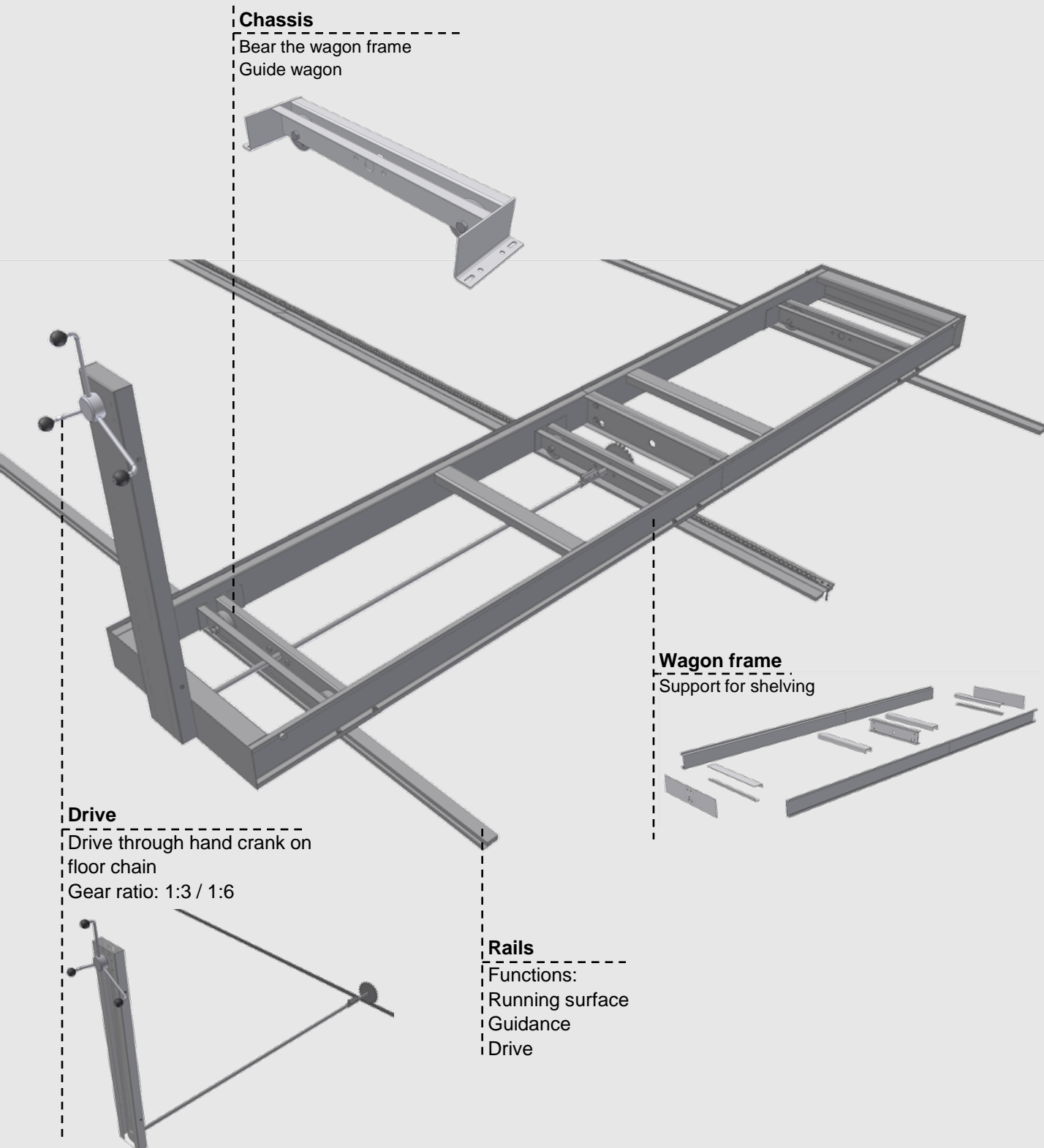
Guidance	Guide profile
Driving	Crank 1:3 / 1:6
Deviations wagon max.	6080x1400 mm
Tracks max.	3 tracks
Track deviations max.	2500 mm
Wagon load max.	6.000 kg/wagon
Wheel load max. single	500 kg/wheel



Wagon push-pull operated

Guidance	Rails
Driving	Handle
Deviations wagon max.	5075x1400 mm
Tracks max.	3 tracks
Track deviation max.	2500 mm
Wagon load max.	2.500 kg/wagon
Wheel load max. single	1.000 kg/wheel

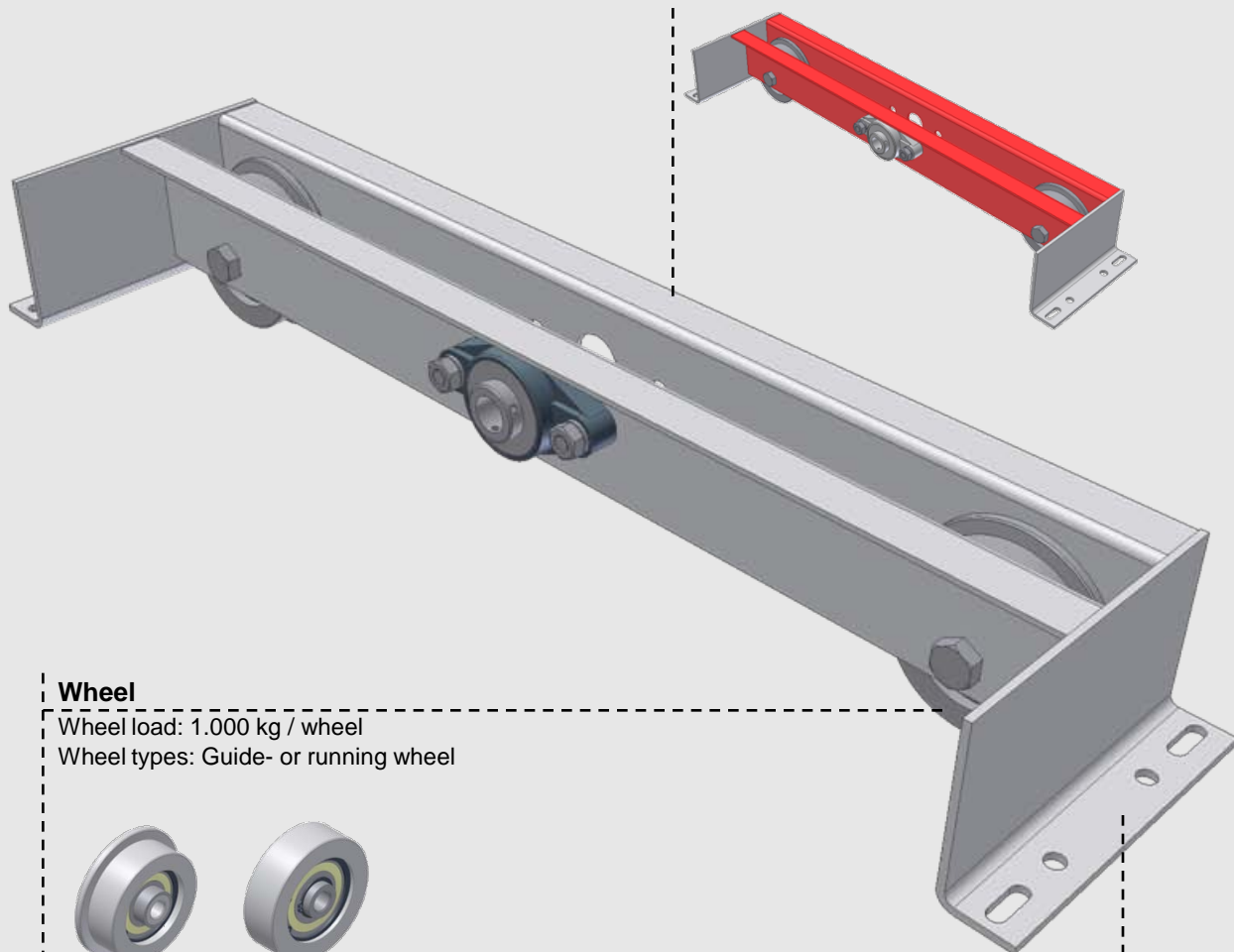
Wagon with crank drive KU components



Chassis KU

Chassis longitudinal profile

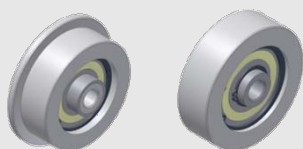
Wheel and flange bearing fixation



Wheel

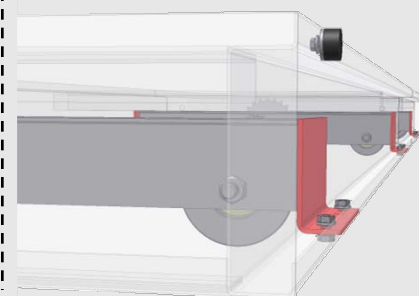
Wheel load: 1.000 kg / wheel

Wheel types: Guide- or running wheel



Chassis support angle

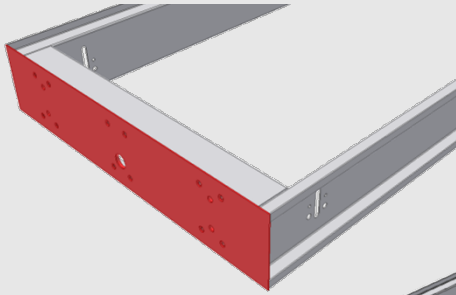
Bear the wagon frame



Wagon frame KU, 2-part

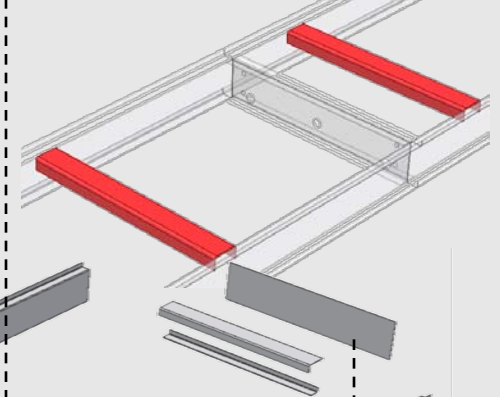
Front sheet metal

Fixation for drive box or locking systems
(e.g.: Aisle lock GV)

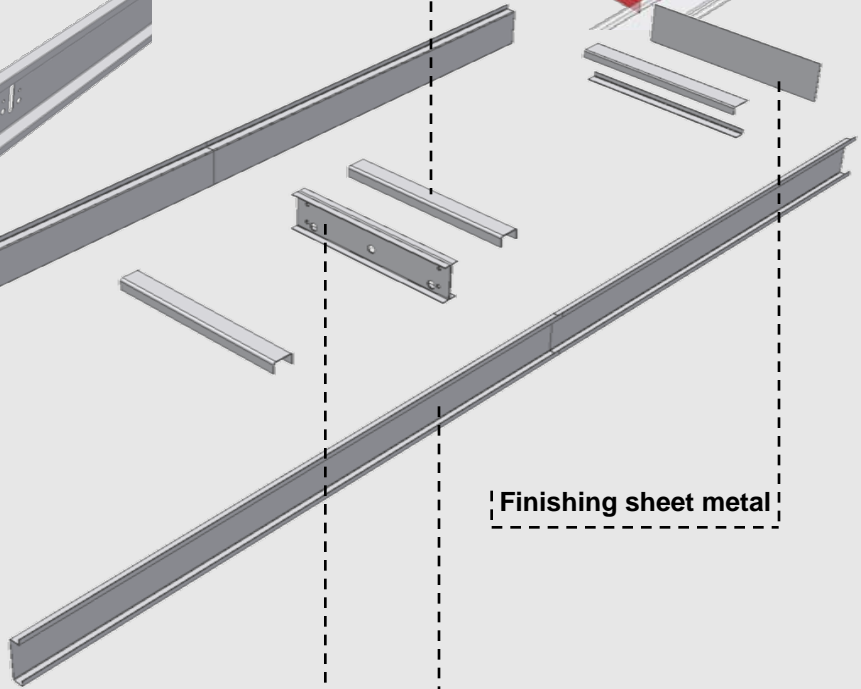


Support middle

Support upright frames / side panels

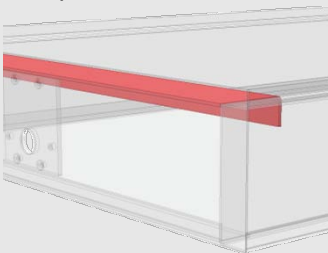


Finishing sheet metal



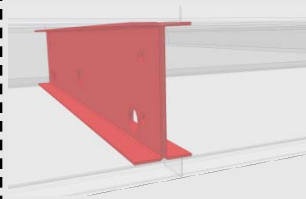
Support front / back

Support upright frames / side panels



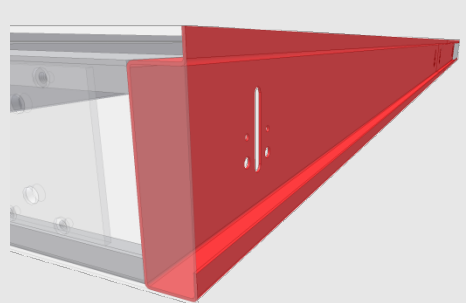
Wagon connection profile

Connection wagon parts



Wagon profile

Support in lengthways of wagon



Drive wagon KU

Hand crank

3-spokes, chromed
Diameter: 408 mm

Drive shaft

Diameter: 20 mm

Drive box

Gear ratio: 1:3 / 1:6

Chain sprocket external

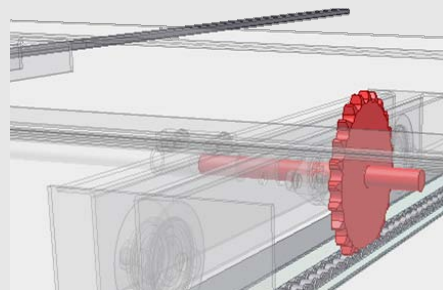
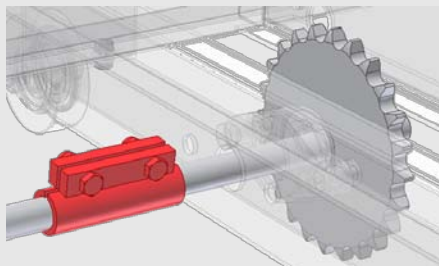
ISO 083
1/2" x 3/16"
Z=25

Connection coupling

Connection between two drive shafts

Floor chain sprocket

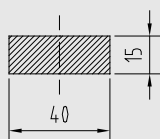
ISO 12 B-1
3/4" x 7/16"
Z=24



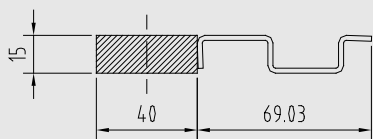
Rails KU

Rail types

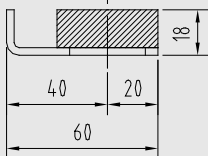
Running rail
LS



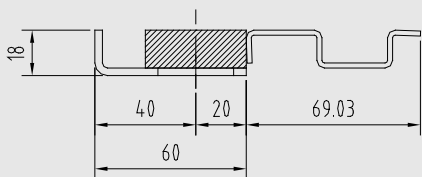
Running rail with drive canal
LS-A



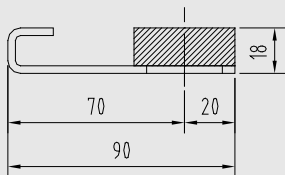
Guiding rail
FS



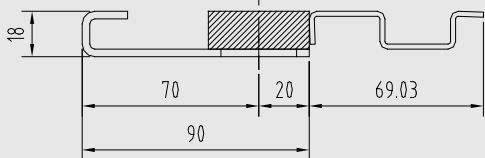
Guiding rail with drive canal
FS-A



Guiding rail with anti tipping profile
FS-K



Guiding rail with anti tipping profile and
drive canal
FS-K-A

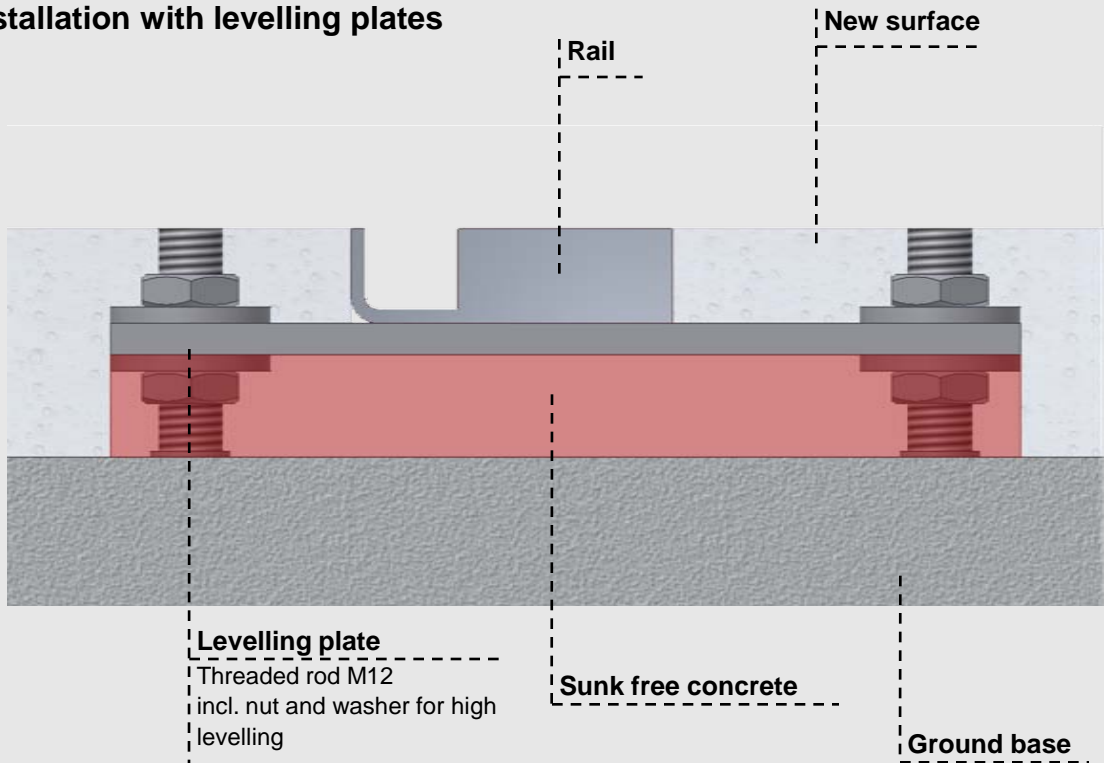


Built up rails

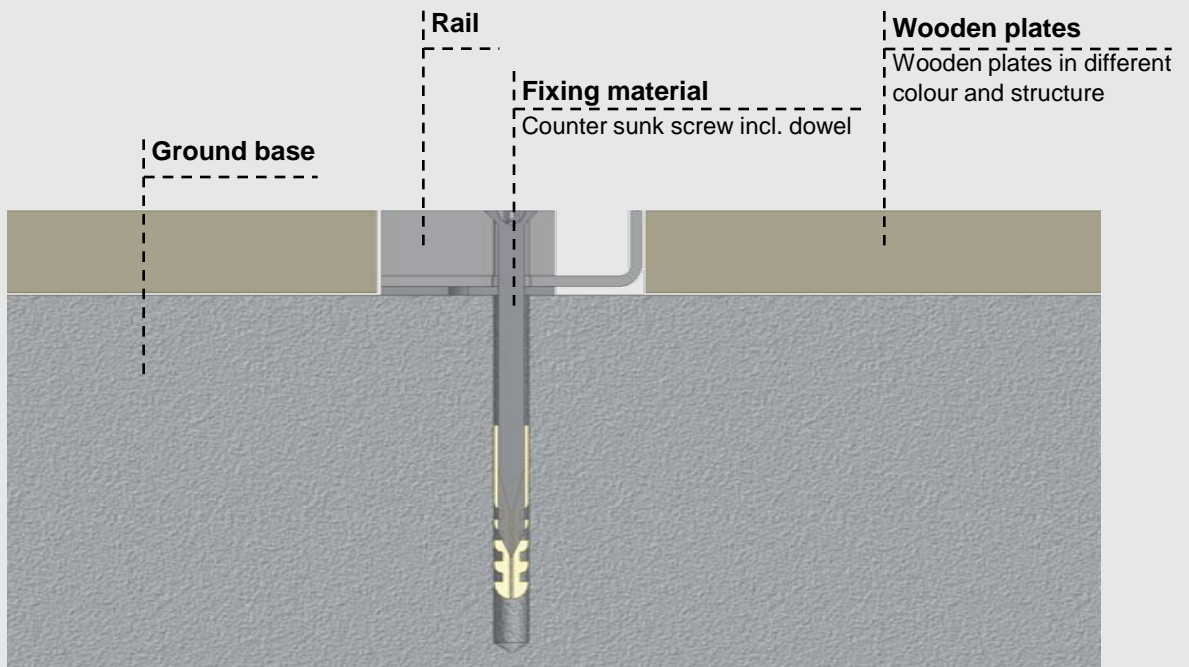
	FS-A	FS			
2-track					
3-track	FS	LS-A	FS		
4-track	FS	LS-A	LS	FS	
5-track	FS	LS	LS-A	LS	FS

Rail installation variants KU

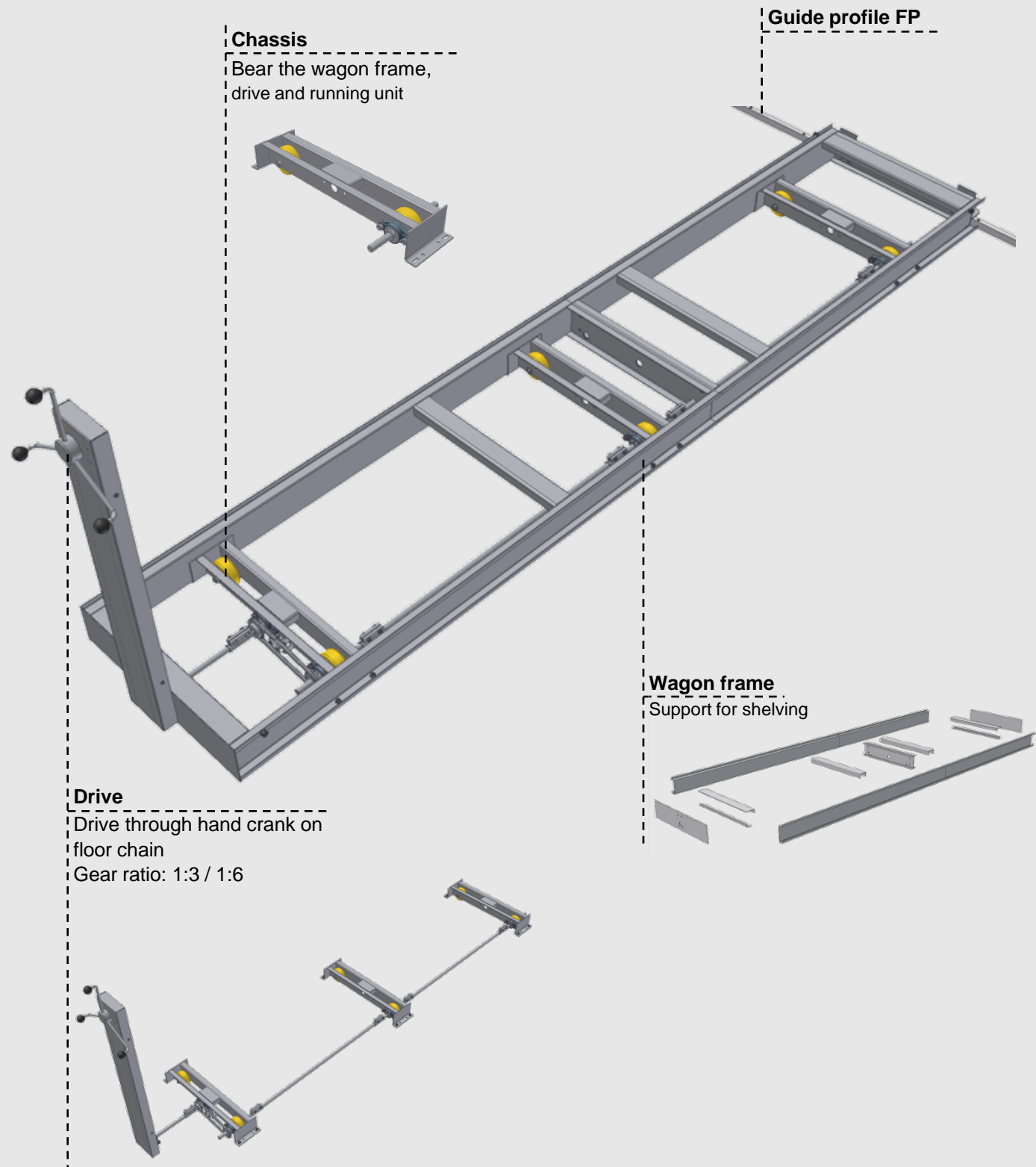
Rail installation with levelling plates



Rail installation with wooden plates



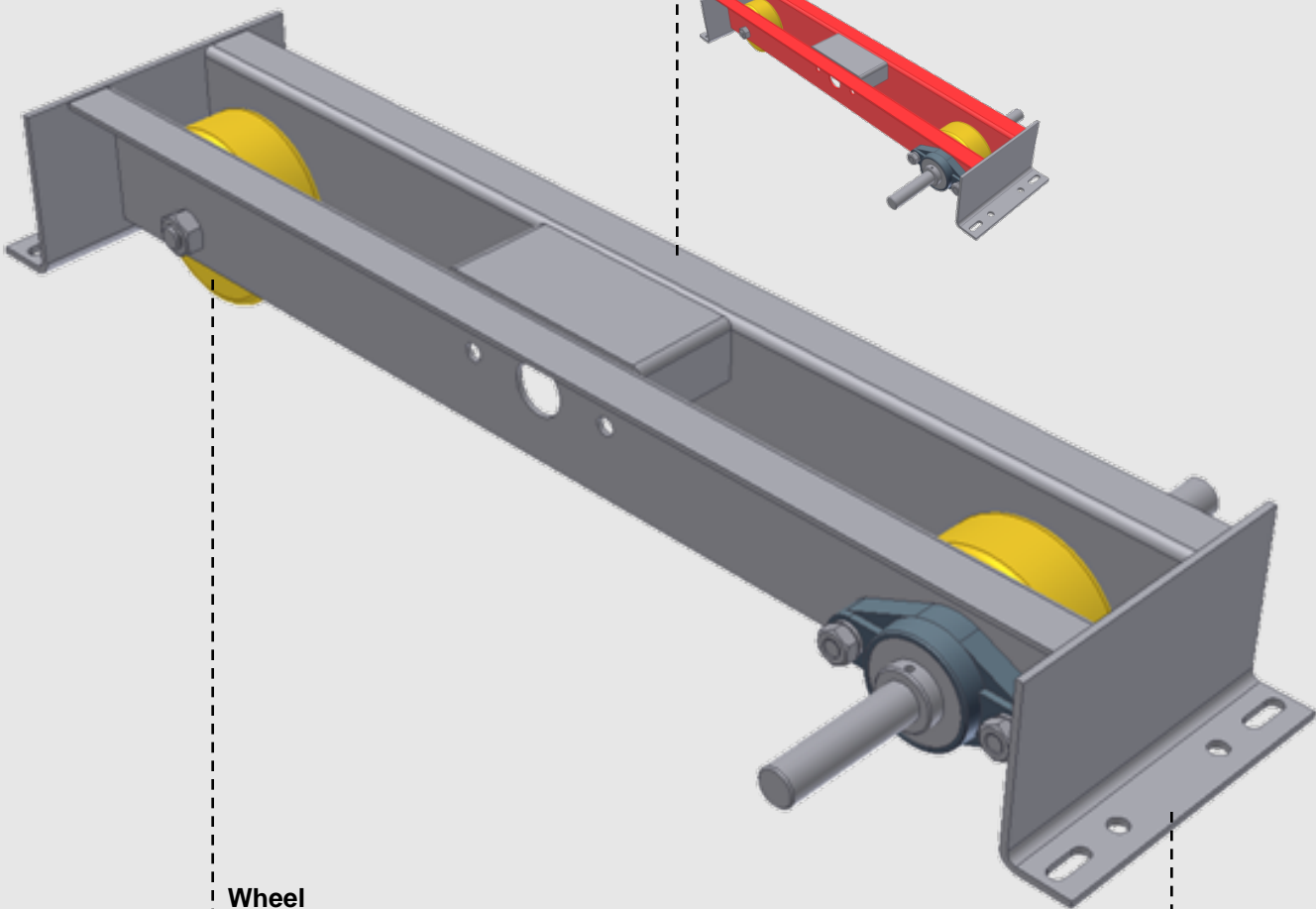
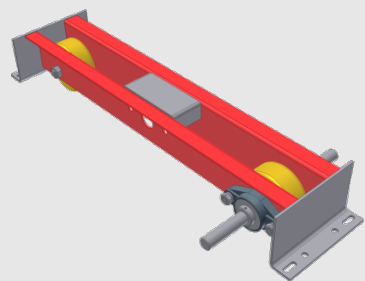
Wagon with crank drive SL components



Chassis SL

Chassis longitudinal profile

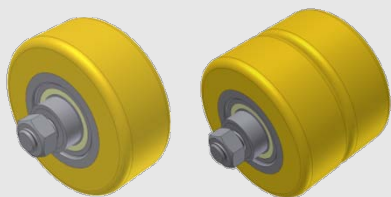
Wheel and flange bearing fixation



Wheel

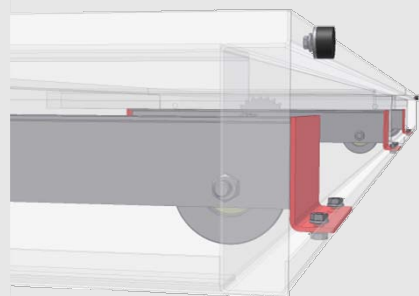
Wheel load: 500 kg / wheel

Wheel types: Simple and double wheel



Chassis support angle

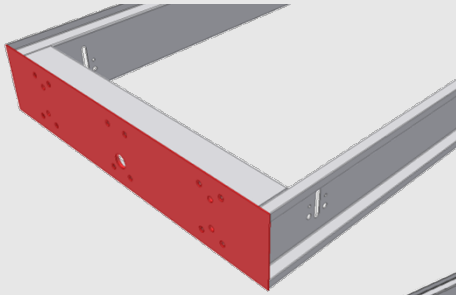
Bear the wagon frame



Wagon frame SL, 2-part

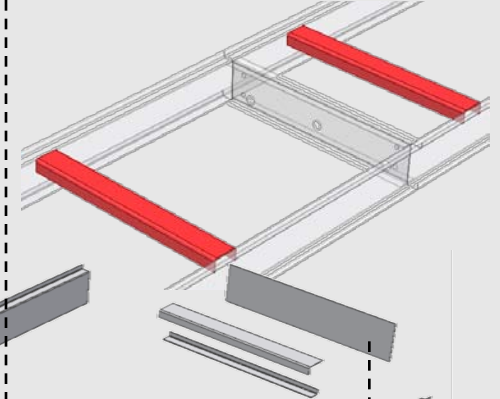
Front sheet metal

Fixation for drive box or locking
(e.g.: Aisle lock GV)



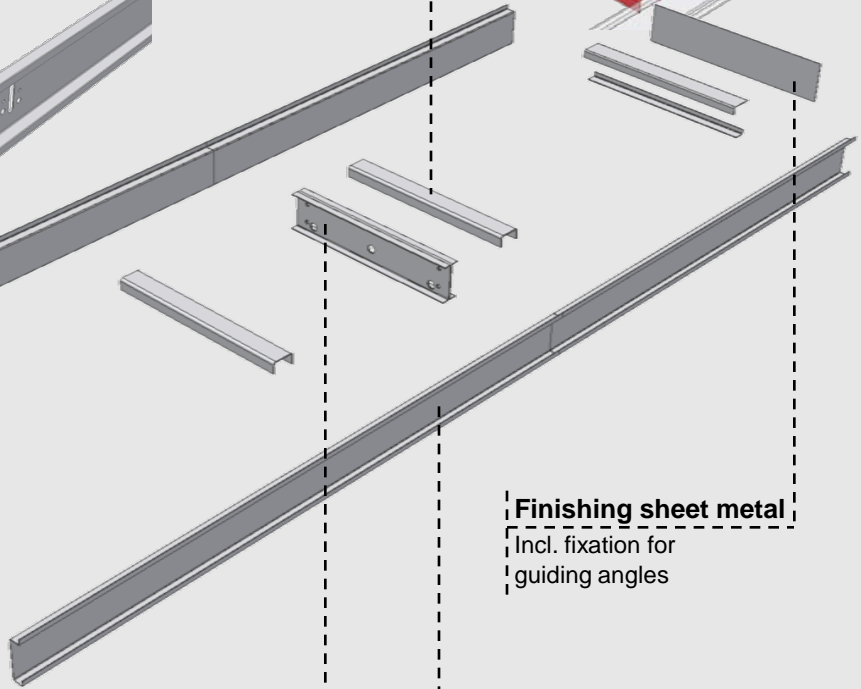
Support middle

Support upright frames / side panels



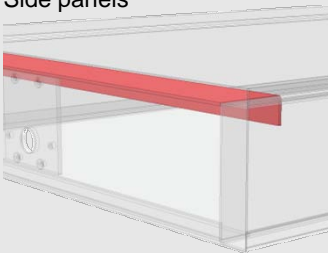
Finishing sheet metal

Incl. fixation for
guiding angles



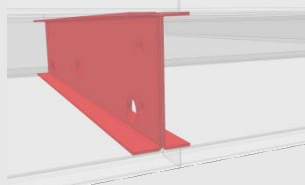
Support front / back

Support upright frames /
Side panels



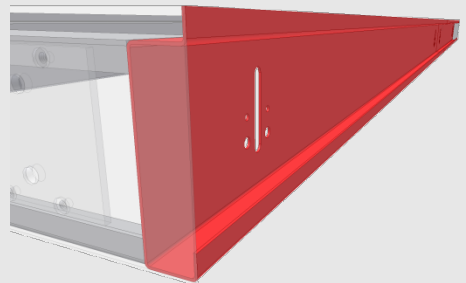
Wagon connection profile

Connection wagon parts



Wagon profile

Support in lengthways of wagon



Drive wagon SL

Hand crank

3-spokes, chromed
Diameter: 408 mm

Drive box

Gear ratio: 1:3 / 1:6

Drive shaft

Diameter: 20 mm

Chain sprocket external

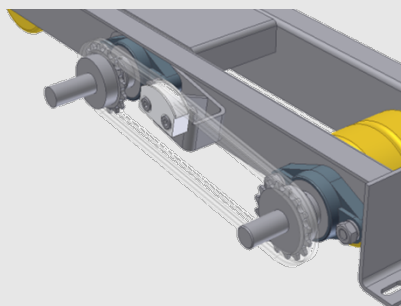
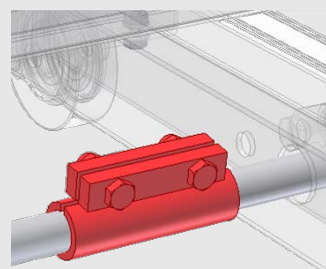
ISO 083
1/2" x 3/16"
Z=25

Drive transmission

Incl. chain tensioner

Connection coupling

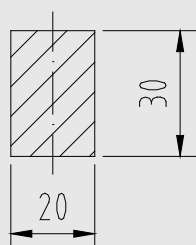
Connection between two drive shafts



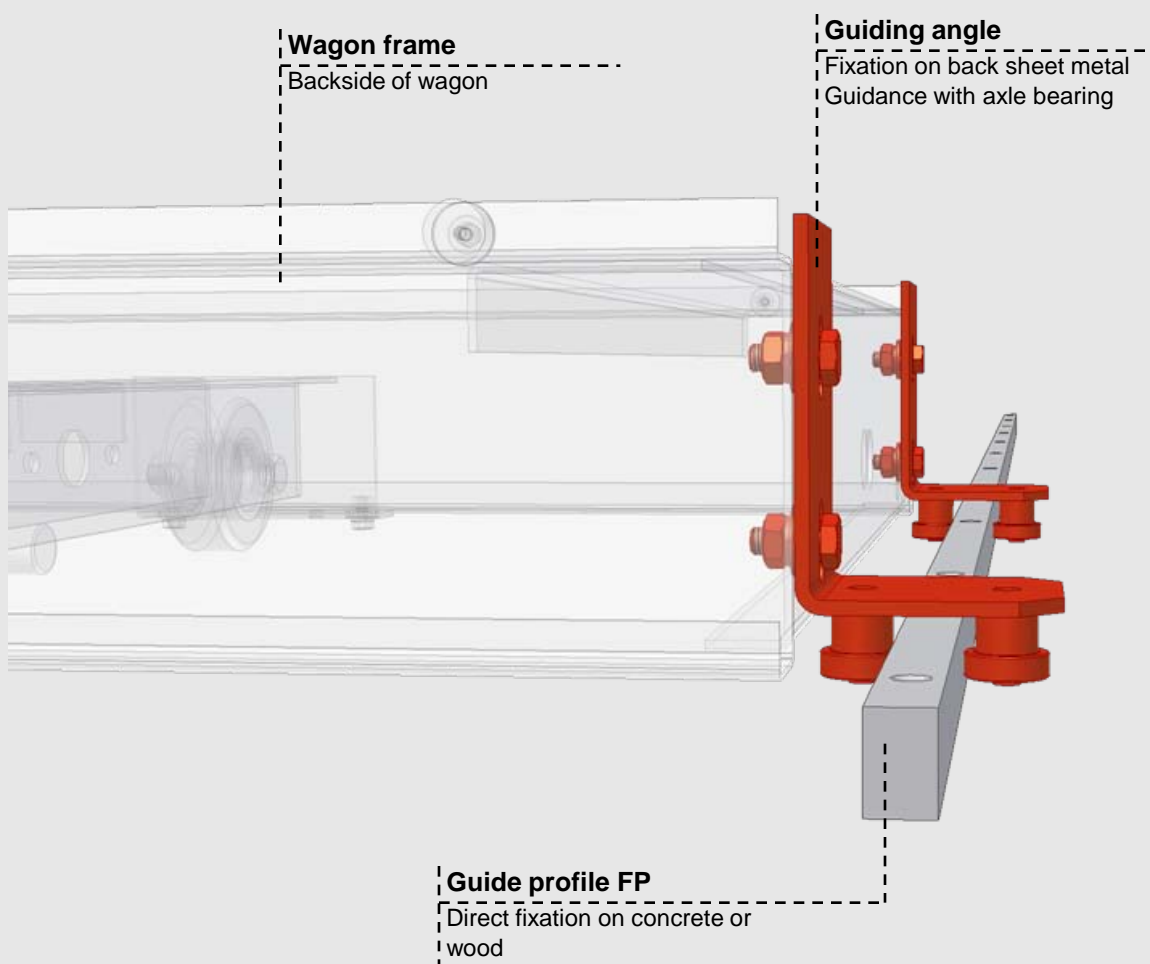
Rail / Guidance SL

Guide profile FP

Guide profile
FP



Guidance rail-less system



Accessories ELL

Locking systems

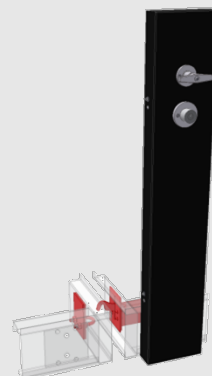
Central lock ZVKU 1:3



Central lock ZVHS

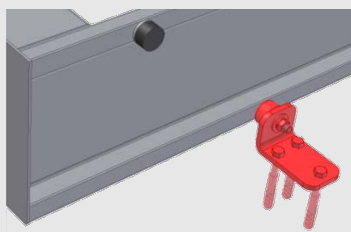


Aisle lock GV

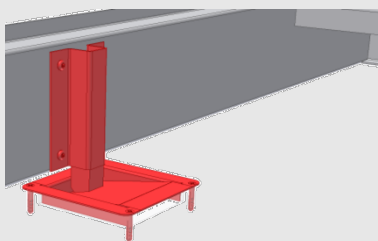


Buffer stops

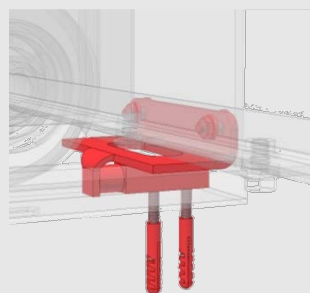
Buffer stop on top



Buffer stop countersunk

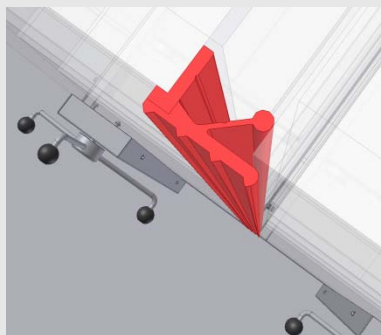


Buffer stop rails KU

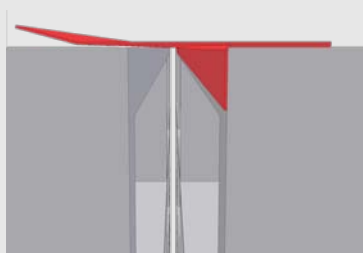


Dust protection

Dust sealing rubber (side)



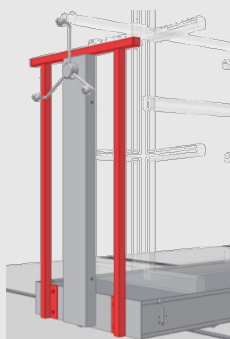
Dust cover (top)



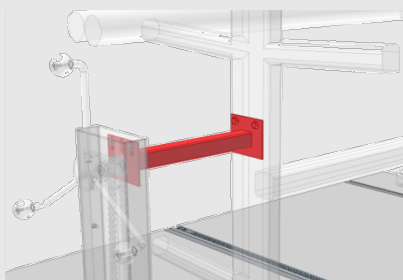
Accessories ELL

Attached drive

Stabilising hoop

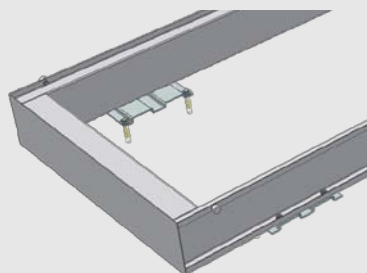


Connection unit

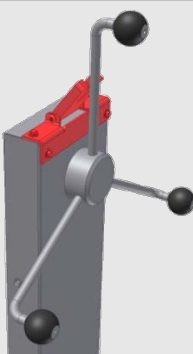


Divers

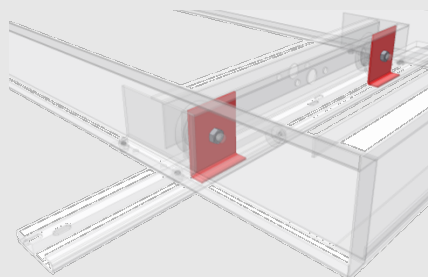
Fixed wagon SO



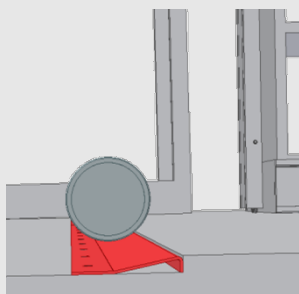
Return stop



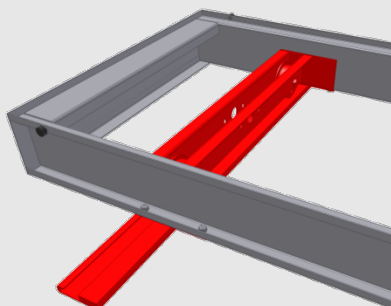
Anti-tipping device



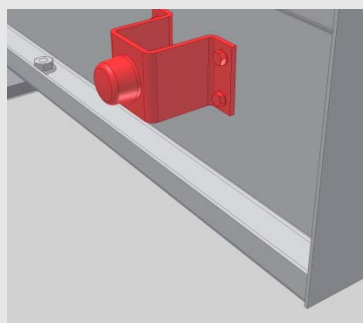
Ramp






Additional track / wagon part



Rubber shock absorbers large



Field of application ELL-systems

Area / target group	Utilisation / application	Solution SSI
Automotive	Storage Spare parts storage Archive Tyre storage	KU / SL KU / SL KU KU
Library Museum	Archive Storage	KU KU
Office	Archive	KU / SL KU / SL
Industry Production	Storage Material storage Tool storage Spare parts storage Raw material stock	KU / SL KU / SL KU / SL KU / SL KU / SL
Medicine Infirmaryes 	Material storage Tool storage Archive	SL KU KU / SL
Food industry 	Raw material stock Storage for semi finished products Storage for spot tests	SL SL SL
Pharmaceutical industry 	Raw material stock Storage for semi finished products Storage for spot tests	SL / KU SL SL

Unique selling proposition ELL-systems

Wagons for every shelf type e.g. :

- R1000
- R3000
- Cantilever racking KRE KRS
- Special shelves from other supplier

Rail-less system for flexible storage

- Ideal for rental rooms
- Ideal for rooms with floor heating
- Simple installation and almost no work on the floor

Rail-less system keeps the room clean

- Hygienic and clean

Special solutions for customer requests

- Oil rig Norway: Cogwheel drive for extreme requirements
- Special project for a private client: Special rail-less system plant for walk-in closet

Description price list ELL

Wagon length from...to

Wagon depth

Wagon KU-1000 with crank drive, load 1'000kg/running metre wagon

Design: Wagon complete, with crank drive (gear ratio 1:3) incl. crank, with rubber shock absorbers, without buffer stop, without anti-tipping device, powder coated jet black RAL 9005 with fine structure

Description: **Maximum load: 10'000kg/Wagon**
 Wheel load: max. 1'000kg, track dimension: max. 2'500mm, overhang: max. 540mm min. 200mm

Wagon length		Rail type		WT	Wagon depth in mm (overall size)				
from	to	without K	with K		366 - 599	600 - 799	800 - 999	1000 - 1199	1200 - 1396
925	1'530	KU-2	KU-K-2	1	277 EUR	282 EUR	289 EUR	297 EUR	305 EUR
1'531	2'030	KU-2	KU-K-2	1	285 EUR	289 EUR	297 EUR	305 EUR	312 EUR
2'031	2'530	KU-2	KU-K-2	1	293 EUR	296 EUR	304 EUR	312 EUR	320 EUR
2'531	3'030	KU-2	KU-K-2	1	299 EUR	305 EUR	317 EUR	327 EUR	338 EUR
3'031	3'580	KU-2	KU-K-2	1	325 EUR	332 EUR	347 EUR	361 EUR	375 EUR
3'581	4'030	KU-3	KU-K-3	2	358 EUR	366 EUR	380 EUR	395 EUR	409 EUR
4'031	4'530	KU-3	KU-K-3	2	388 EUR	395 EUR	410 EUR	425 EUR	439 EUR
4'531	5'030	KU-3	KU-K-3	2	415 EUR	434 EUR	449 EUR	463 EUR	478 EUR
5'031	5'530	KU-3	KU-K-3	2	456 EUR	464 EUR	478 EUR	493 EUR	507 EUR
5'531	6'080	KU-3	KU-K-3	2	482 EUR	489 EUR	504 EUR	518 EUR	532 EUR
6'081	6'530	KU-4	KU-K-4	3	508 EUR	516 EUR	530 EUR	545 EUR	559 EUR
6'531	7'030	KU-4	KU-K-4	3	538 EUR	545 EUR	560 EUR	574 EUR	589 EUR
7'031	7'530	KU-4	KU-K-4	3	563 EUR	570 EUR	584 EUR	599 EUR	614 EUR
7'531	8'030	KU-4	KU-K-4	3	587 EUR	594 EUR	609 EUR	623 EUR	638 EUR
8'031	8'580	KU-4	KU-K-4	3	604 EUR	611 EUR	624 EUR	633 EUR	640 EUR
8'581	9'030	KU-5	KU-K-5	4	644 EUR	658 EUR	672 EUR	679 EUR	687 EUR
9'031	9'530	KU-5	KU-K-5	4	668 EUR	675 EUR	689 EUR	696 EUR	704 EUR
9'531	10'030	KU-5	KU-K-5	4	684 EUR	691 EUR	704 EUR	712 EUR	719 EUR
10'031	10'530	KU-5	KU-K-5	4	695 EUR	703 EUR	717 EUR	724 EUR	726 EUR
10'531	11'080	KU-5	KU-K-5	4	702 EUR	708 EUR	722 EUR	730 EUR	738 EUR

Number of wagon parts

Number of tracks

Rail type with anti-tipping profile

Number of tracks

Rail type without anti-tipping profile

Example:

Wagon 4884 x 635 x 150 mm
 Price: 434.- €/ Stk.

