

SAFEGUARD COLOR PALLET

For Hi-Traction® and HiGlo-Traction®
Product Lines



SAFEGUARD COLOR GUIDE

SAFEGUARD Technology Inc. offers our complete line of Hi-Traction® and HiGlo-Traction® Anti-Slip Covers in solid colors, two tone color configurations, as well as photoluminescent Glow-in-the-Dark.



www.safeguard-technology.com

Step Covers | Walkway Covers | Ladder Rung Covers | Pipe & Cable Covers | Roll-Traction® | Anti-Slip Mats | Anti-Slip Tapes

SAFEGUARD COLOR PALLET

For Hi-Traction® and HiGlo-Traction®
Product Lines

SAFEGUARD® Hi-Traction® & HiGlo-Traction® Covers
are available in various color options to meet the needs
of safety-minded customers.

Safeguard® Anti-Slip Products are available in a variety of colors to meet the needs of safety-minded customers. Choose from a range of solid colors or combine colors for a two-tone configuration, accentuating the leading edge or creating boundaries for added visual safety awareness.

Color Pallet

In addition to standard and safety colors, Safeguard also offers a line of premium colors. Based upon popular trends and subtle color hues, the premium line fits well with the aesthetic requirements for Anti-Slip safety at schools, commercial buildings, hotels, restaurants, and residential homes.

Photoluminescent "Glow-in-the-Dark" Pigment

HiGlo-Traction® Covers offer Anti-Slip protection with the added benefit of Photoluminescent "Glow-in-the-Dark." In addition to standard Photoluminescent, which is white when non-glowing, Safeguard offers Glo-Safety Yellow, Glo-Safety Lime, Glo-Green, Glo-Pink, and Glo-Orange. These Photoluminescent Safety Products use an embedded inorganic pigment that creates a glow when active. The pigment is non-toxic, non-radioactive, and can be recharged repeatedly throughout the life of the product.

Two-Tone Configurations:

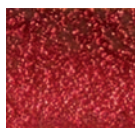
Safeguard colors can be combined to create a two-tone configuration. Contrasting color on the nosing and vertical lip of a Step Cover, calls attention to the leading edge of a stair. Contrasting color on the perimeter of a Walkway Cover designates a change in surface texture and signifies a safe walk zone. Two-tone can also be configured on Ladder Rung Covers and is standard on all Pipe and Cable Covers.

An economical alternative to full 100% Photoluminescent Covers is a combination with a solid color. Not only do you have a two-tone configuration in the light, but also the benefit of Glow-in-the-Dark when the light source is removed.

* Due to the combination of aggregates used to achieve the "speckled effect," the following colors can only be combined with one another:

Speckle Photo • Brisbane Brick Red • Erie Blue
• PM Salmon • Garfield Gray • Grand River Gray
• Ipswich Olive • Ekriz Brown • Newbury Sky
• Mentor Sand • Hudson Hunter Green

Standard Color Options



Red



Black



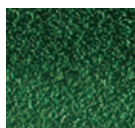
Brown



Gray



Safety Yellow



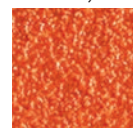
Green



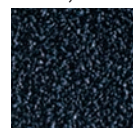
Beige



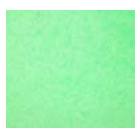
White/Non-Glowing



Orange



Blue



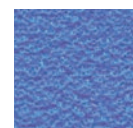
Fluorescent Green



Fluorescent Orange



Fluorescent Pink



PPE Blue

Premium/SGT2100 Colors



Bainbridge Blue



Speckle Photo



Brisbane Brick Red



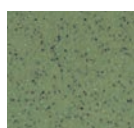
Erie Blue



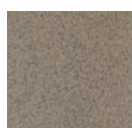
PM Salmon



Garfield Gray



Ipswich Olive



Ekriz Brown



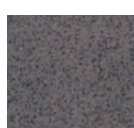
Geauga Green



Chagrin Chocolate



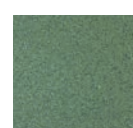
Newbury Sky



Grand River Gray



Mentor Sand



Hudson Hunter Green

HiGlo-Color Options



Glo-White



Glo-Orange



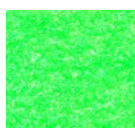
Glo-Safety Yellow



Glo-Pink



Glo-Lime



Glo-Green

Custom Color Matching:

In addition to stock colors, Safeguard has the ability to provide custom color matching. Please contact Safeguard for more information on this option.

Contact Safeguard Technology for more
information or a free sample today.



SAFEGUARD TECHNOLOGY INC.

330.995.5200 | 800.989.1695 Toll-Free in the U.S. and Canada
Email: info@safeguard-technology.com
www.safeguard-technology.com

© Copyright 2015 SAFEGUARD TECHNOLOGY INC.
SAFEGUARD® Covers, Hi-Traction®, and HiGlo-Traction®
are registered trademarks of SAFEGUARD Technology Inc.
REV2_051514

The samples on this sheet serve only as a visual guide for initial selection of color. Actual finished product color may vary slightly from the printed images based on grit size (coarseness) as well as the base material of construction.

For an accurate depiction, please request a product sample.

Anti-Slip HiGlo-Traction®
PHOTOLUMINESCENT
Glow-In-The-Dark Colors



SAFEGUARD
TECHNOLOGY

Leading Manufacturer of Anti-Slip Safety Products



HiGlo-Traction® Glo-Yellow Step Cover (Daytime)



HiGlo-Traction® Glo-Yellow Step Cover (Nighttime)

**When Darkness Falls, Light The Way To Safety
While Providing Anti-Slip Protection.**

SAFEGUARD® HiGlo-Traction® Covers for steps, ladders and walkways are proven to be visible for hours after the light source is removed.

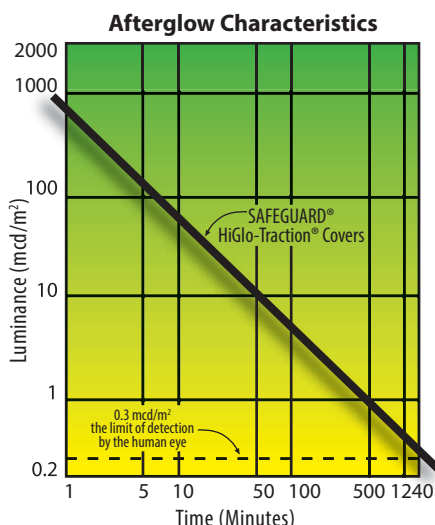


www.safeguard-technology.com

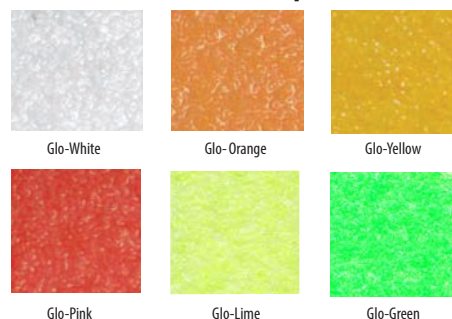
Step Covers | Walkway Covers | Ladder Rung Covers | Pipe & Cable Covers | Roll-Traction® | Anti-Slip Mats | Anti-Slip Tapes

Anti-Slip HiGlo-Traction® PHOTOLUMINESCENT Glow-In-The-Dark Colors

SAFEGUARD® HiGlo-Traction® Covers Egress and Slip Prevention all in one!



HiGlo-Traction® Color Options



HiGlo-Traction®

SAFEGUARD® HiGlo-Traction® Covers glow in the dark, producing a light source that can provide critical egress when the lights go out. These products incorporate a photoluminescent pigment directly into the Anti-Slip system. Unlike paints, the pigment will not wear off and will last for the life of the Cover.

Coverage and Configuration

Choose full 100% photoluminescent or for an economical alternative, combine with Hi-Traction® colors for a two-tone configuration; calling attention to the leading edge of a step or edges of a walkway or ladder rung. Customize with directional marking or descriptive messages to point the way to safety.

***NOTE: Safeguard® HiGlo-Traction® Covers must be charged by a light source to activate the photoluminescent "Glow-in-the-Dark" pigment.**

Afterglow

HiGlo-Traction® Covers can be fully charged after 5 minutes of exposure to sunlight, 8 minutes at dusk, or 10 minutes in fluorescent light. Luminance will remain visible to the adjusted eye for 12-20 hours after the light source is removed. The green/yellow glow is created by embedded inorganic photoluminescent pigment that is non-toxic, non-radioactive and can be recharged repeatedly during the life of the product. The Covers exhibit excellent weather and light fastness.

The degree of brightness depends on:

1. Strength and nature of the light source. The higher the UV output the better.

Daylight	excellent
Fluorescent	excellent
Incandescent	fair
Red light	no activation
Sodium vapor	no activation

2. Distance from the light source.

Coefficient of Friction Values

Our HiGlo-Traction® Covers have the same quality and sure-footing surface as our Hi-Traction® line, which set the industry standard for Anti-Slip protection. The Coefficient of Friction value exceeds OSHA & ADA standards when wet, oily or dusty, as measured by the Mark II Model of the Brungraber Slip-Tester.

Physical Properties

Please refer to our General Properties Insert for complete physical properties.

FAQ:

1. Is there a difference between Hi-Traction® and HiGlo-Traction® Anti-Slip capabilities?
No, slip prevention properties and coefficient of friction are identical.
2. Do I have to order 100% photoluminescent Covers?
No, all of our Covers are available in a two-tone configuration with photoluminescent nosing or edging.
3. Are all Safeguard® Hi-Traction® Covers available in photoluminescent?
Yes.

Contact Safeguard Technology for more information or a free sample today.

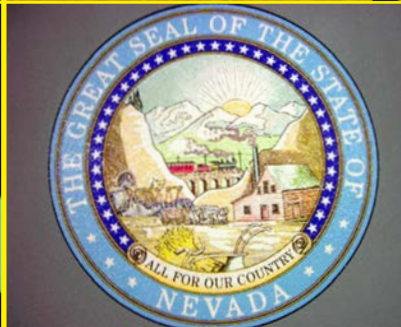


SAFEGUARD TECHNOLOGY INC.

330.995.5200 | 800.989.1695 Toll-Free in the U.S. and Canada
Email: info@safeguard-technology.com
www.safeguard-technology.com

© Copyright 2015 SAFEGUARD TECHNOLOGY INC.
SAFEGUARD® Covers, Hi-Traction®, and HiGlo-Traction® are registered trademarks of SAFEGUARD Technology Inc.
REV2_051514

Anti-Slip Hi-Traction® DESCRIPTIVE MARKINGS



Descriptive Messaging, Corporate Logos & Safety Symbols imbedded into Safeguard® Hi-Traction® Covers

Make a statement, point the way to an emergency escape route or display your company's logo while eliminating the risks of slips and falls.



Anti-Slip Hi-Traction® DESCRIPTIVE MARKINGS

SAFEGUARD Descriptive Markings Your message imbedded in an Anti-Slip Cover!

Descriptive Messaging and Logos

Safeguard was the first to incorporate PPE Safety Messaging on our complete line of Hi-Traction® Covers. Reinforce safety with universally recognized symbols, thus eliminating language barriers. Safeguard also applies corporate logos to enhance branding and reaffirm safety compliance programs.



Applications. Our Descriptive Marking Covers are used in commercial buildings, transportation steps, ramps, lifts, and railway platforms in addition to offshore oil platforms and industrial applications. The descriptive marking is imbedded and sealed into our Hi-Traction® and HiGlo-Traction® Covers and is designed to wear for the life of the product.

Safety in the Dark

By incorporating the photoluminescent option into our Descriptive Marking Covers, you can achieve an extra measure of safety after dark or during power outages.



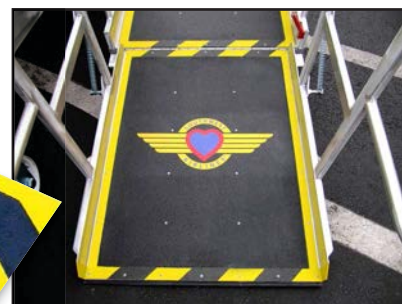
Glow-in-the-dark Step Cover daytime and at night

Physical Properties

Please refer to our General Properties Insert for complete physical properties.

Cleaning and Installation

Please refer to our Cleaning and Installation insert for complete details.



Questions & Answers:

1. *Can I customize the wording and colors?*
Yes, we can use your text and/or match the color and style of your logo..
2. *Is Descriptive Marking available on all of your safety covers?*
Yes.
3. *Is there a size restriction?*
Yes, the size of the image should be proportional to the size of the Cover.

Contact Safeguard Technology for more information or a free sample today.



SAFEGUARD TECHNOLOGY INC.
330.995.5200 | 800.989.1695 Toll-Free in the U.S. and Canada
Email: info@safeguard-technology.com
www.safeguard-technology.com

© Copyright 2015 SAFEGUARD TECHNOLOGY INC.
SAFEGUARD® Covers, Hi-Traction®, and HiGlo-Traction®
are registered trademarks of SAFEGUARD Technology Inc.
REV2_051514