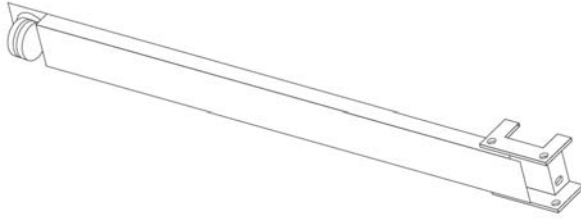


PickerPal Arm

INSTALLATION INSTRUCTIONS



Meets OSHA 1910.23 and IBC Requirements
for work platform fall protection

Please retain these instructions

General Information

This manual contains information regarding installation, operation and maintenance of the PickerPal Arm and safety gate.

Operation in a manner other than the intended use could result in damage or less than acceptable performance, for which the manufacturer will not be held responsible.

This product is manufactured to specific guidelines. Unauthorized alteration in any way will result in voiding the Factory Warranty, and may cause product to fail with potential serious consequences.

General installation and maintenance notes:

- A. Clear area of any debris
- B. Ensure opening is clear of all obstructions through the entire proposed travel of the safety arm during operation
- C. Comply with all OSHA Safety regulations and/or company safety policies when installing
- D. Install only on storage rack capable of supporting all loading requirements. **STRUCTURAL ANALYSIS OF THE MOUNTING SURFACE IS THE RESPONSIBILITY OF THE OWNER**
- E. **DO NOT USE THE ARM AS A GRAB SURFACE DURING OR ANY TIME AFTER INSTALLATION**
- F. All fasteners must be in place and adjusted to their original design standards. Replace any damaged components
- G. Check for broken springs periodically to ensure proper functionality
- H. Replace any warning labels if missing or illegible (Warning label on inside of arm)

Description

The PickerPal Arm is uniquely designed as a protective measure for exposed pallet locations within a pick module. The Mounting Bracket for the arm lines up with the tear drop holes in the face of the rack frame. Six PickerPal Arms are required to provide adequate OSHA-mandated fall protection. As cases are removed from the pallets, the top arms swing closed to create a gate. When the empty pallets are removed, the bottom gates swing closed to provide a kick plate.

CRITICAL Do not mount this product on a pallet rack that is NOT a "3 x 3" frame

Items Included

PickerPal Arm	Bracket Pin	Cotter Pin
Installation Instructions	Custom Spring	Four 'T' Carriage Bolts
Common Post Bracket	Two Nylon Washers	Four ½" serrated-flange hex locknuts

NOTICE Customer must use all hardware provided

PickerPal Products
1321 Howard Drive
West Chicago, IL 60185

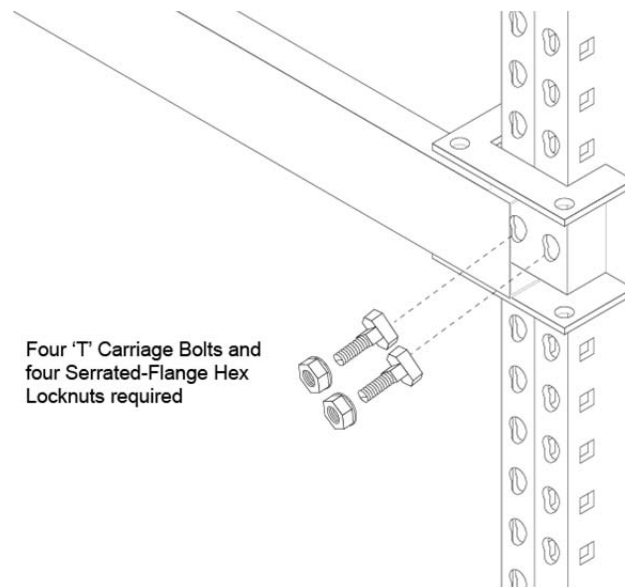
(877) 656-5600 office
(630) 876-1993 fax

sales@pickerpal.net
www.pickerpalproducts.com

Installation – 3” Pallet Rack:

1. Align top PickerPal bracket around the front of pallet rack, aligning front bracket holes with Tear Drop holes. The cotter pin must be on the bottom of the assembly. **Mount top Bracket/Arm assembly so that the top of the arm is at or above 42”**
2. Insert heads of ‘T’ carriage bolts through the front of the PickerPal bracket and through the front of the rack frame. Rotate bolts 90 degrees so the heads of the bolts are oriented horizontally
3. Fasten bolts using serrated-flange hex locknuts. Tighten to 30 ft-lbs torque (slotted screwdriver can be used to hold ‘T’ carriage bolts while tightening locknuts)
4. Mount the center arm so that the arm is at 22” above the floor, **leaving 18” between the arms.** Mount the bottom arm at the lowest point possible, so that the floor/rollers do not come in contact with the arm movement

CRITICAL Nothing should impede the full motion of the arm



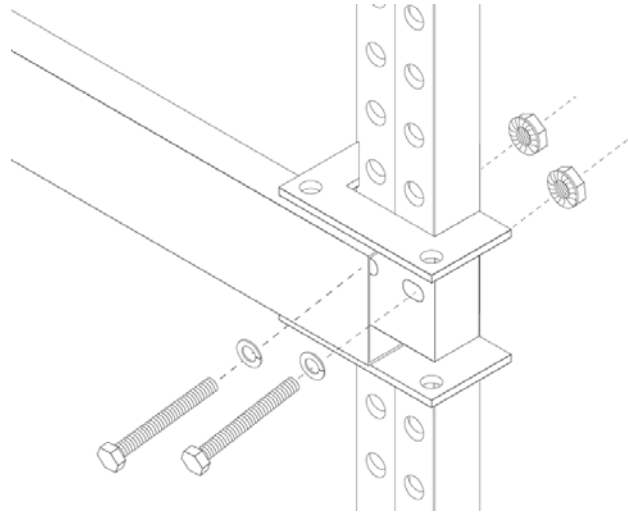
Bracket / Arm Mounting



Proper Separation of PickerPal Arms (a slight lean of the arm is typical)

Installation – 3” or 4” Structural Rack

1. Align PickerPal bracket around the front of structural rack, aligning front bracket holes with pallet rack holes. The cotter pin must be on the bottom of the assembly. **Mount top Bracket/Arm assembly so that the top of the arm is at or above 42”**
2. Insert ½” bolts (with lock washers) through the front of the PickerPal bracket and through the front of the rack frame
3. Fasten bolts using serrated-flange hex locknuts. Tighten to 30 ft-lbs torque
4. Mount the center arm so that the arm is at 22” above the floor, **leaving 18” between the arms.** Mount the bottom arm at the lowest point possible, so that the floor/rollers do not come in contact with the arm movement



NOTICE

The PickerPal Arm is intended to be used for fall protection. Its effectiveness depends on proper maintenance and installation. The performance of the PickerPal Arm will be affected by failure to properly maintain and install

Inspection and Maintenance:

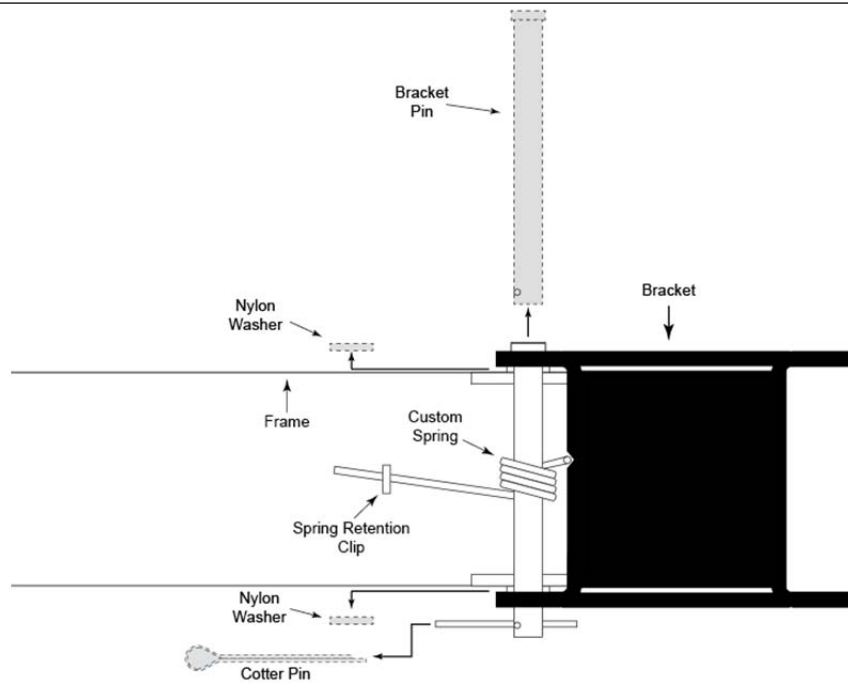
- Check for physical damage of the PickerPal arm and hardware

CRITICAL

Alert manufacturer immediately of unusual wear and tear is found

- Check PickerPal Arm for unusual tilt
Note: A slight lean of the arm is typical
- Ensure heads of ‘T’ carriage bolts are oriented horizontally (to prevent slipping from bracket holes)
- Periodically tighten serrated-flange hex locknuts to 30 ft-lbs torque
- Periodically tighten caster bolts (mounting plate and axle)
- Ensure caster swivels and turns freely
- Check condition and placement of nylon washers
- Ensure end of custom spring is positioned in spring retention clip
- Check cotter pin for placement and damage

WARRANTY DOES NOT APPLY TO ANY DAMAGE OR DETERIORATION CAUSED BY MODIFICATION, ABUSE, OR FAILURE TO PROVIDE REASONABLE AND NECESSARY MAINTENANCE.



For Reference Only

Limited Warranty

PickerPal Products warrants this product and components to be free from defects in material and workmanship for a period of one year from date of shipment. If within the term of this warranty, and PickerPal gate/arm or component is found to be defective upon inspection by an authorized PickerPal representative, PickerPal will replace or repair, as PickerPals' discretion, any part found to be defective. Any field labor incurred is the sole responsibility of the customer.

To file a claim under this warranty, contact us at the address below.

DO NOT send any product back without proper authorization, as it will be refused.

Unauthorized modification of or to this product voids the PickerPal warranty.

PICKERPAL PRODUCTS SHALL NOT BE LIABLE FOR ANY CONSEQUENTIAL OR INCIDENTAL DAMAGES.

All other warranty's, express or implied including any warranty of merchantability, are expressly excluded. Some states do not allow the exclusion of limitation of consequential or incidental damages, so the above limitation or exclusion may not apply to you.

WARRANTY DOES NOT APPLY TO ANY DAMAGE OR DETERIORATION CAUSED BY MODIFICATION, ABUSE, MISUSE, OR FAILURE TO PROVIDE REASONABLE AND NECESSARY MAINTENANCE.

We recommend the owner implement a regular maintenance program to inspect the arm assembly, mounting hardware is tight, make sure there is a clear path of operation free from obstructions, and that all parts are in good working order. Custom spring should be in the spring retention clip.

This warranty gives you specific legal rights, and you may also have other rights, which vary, from state to state.

PickerPal Products
1321 Howard Drive
West Chicago, IL 60185

(877) 656-5600 office
(630) 876-1993 fax

sales@pickerpal.net
www.pickerpalproducts.com